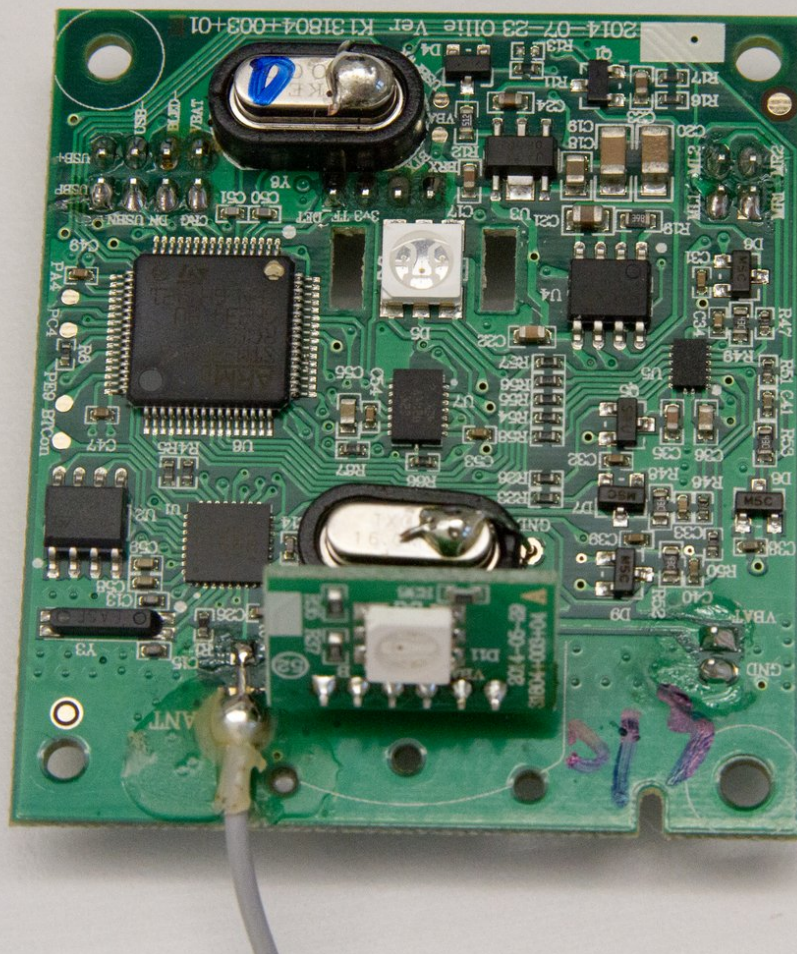




# Sphero Ollie Motherboard Replacement

Motherboard replacement for Sphero Ollie.

Written By: Krystal Hedrick



## INTRODUCTION

This guide will illustrate how to easily replace the motherboard on the Sphero Ollie with only your hands, Plastic Opening Tool and a Phillips-Head Screwdriver.



### TOOLS:

- [iFixit Opening Tools](#) (1)
  - [JIS #1](#) (1)
-

## Step 1 — Tires and Hubcaps



- Firmly grasp Ollie in one hand.
- Remove the blue rubber tire in a peeling motion with your opposite hand.

## Step 2



- Continue to firmly hold Ollie in one hand.
- Use a Plastic Opening Tool to gently pry off the hubcap.
- ⓘ Avoid inserting the Plastic Opening Tool into the empty holes, but instead use the tool near the tabs holding the hubcap in.
- ⚠ Do not aim the hubcap towards another person as it may pop off with force.

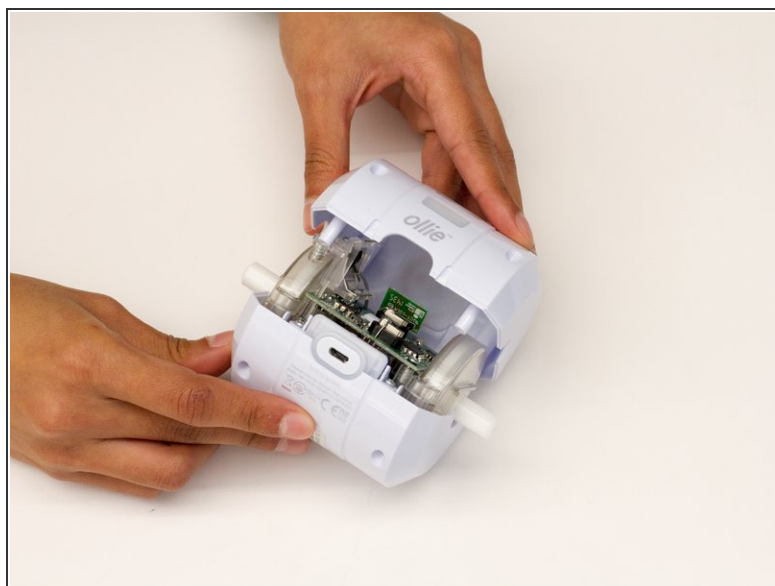


## Step 3 — Motherboard



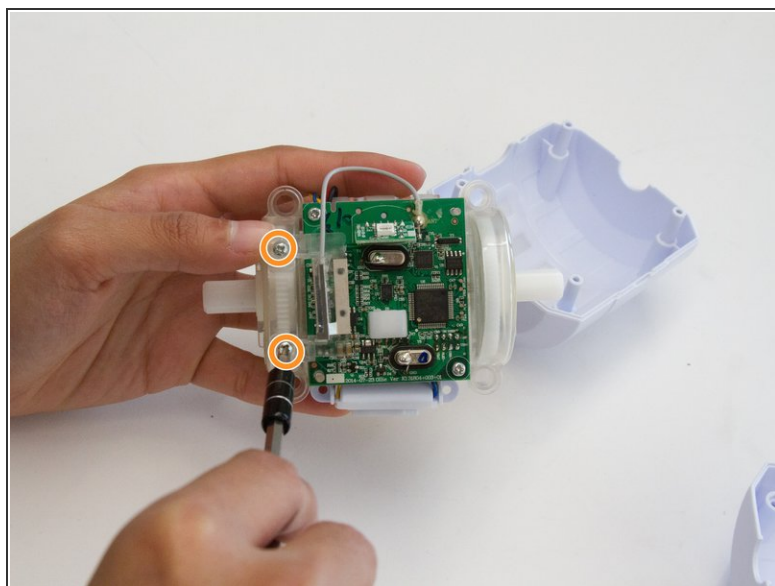
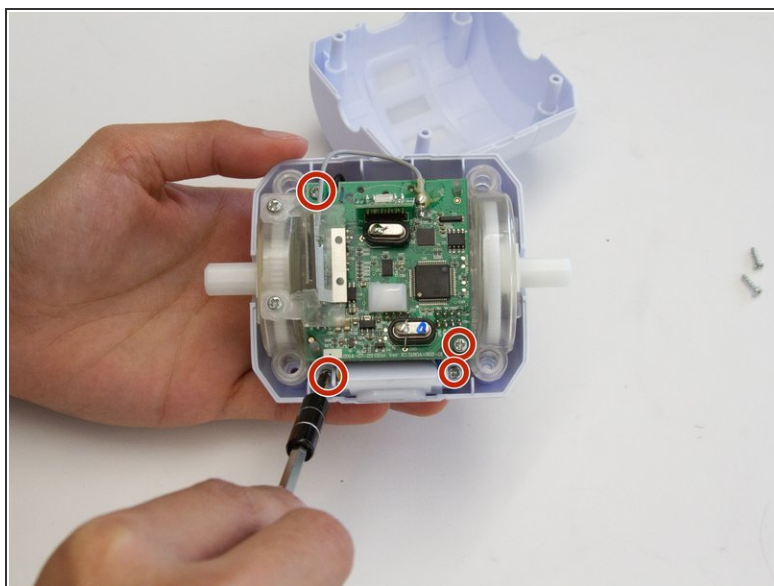
- Loosen and remove the 10mm screw on each side of the device using a JIS 1 screwdriver tip.
- Remove the plastic tire frame from the device

## Step 4



- Loosen and remove the four 10mm Screws on the underside of the device using a JIS 1 tip.
- Firmly grasp the bottom of the device and pull the top half of the outer case off of the bottom.

## Step 5



- Loosen and remove the 10mm screws holding the blue tooth connector as well as the two 1 10 screws holding the motherboard to the case using the JIS #1 screwdriver
- Loosen and remove the 10mm screws holding the antenna to the case.
- Gently remove mother board from the case with an upward motion.

To reassemble your device, follow these instructions in reverse order.