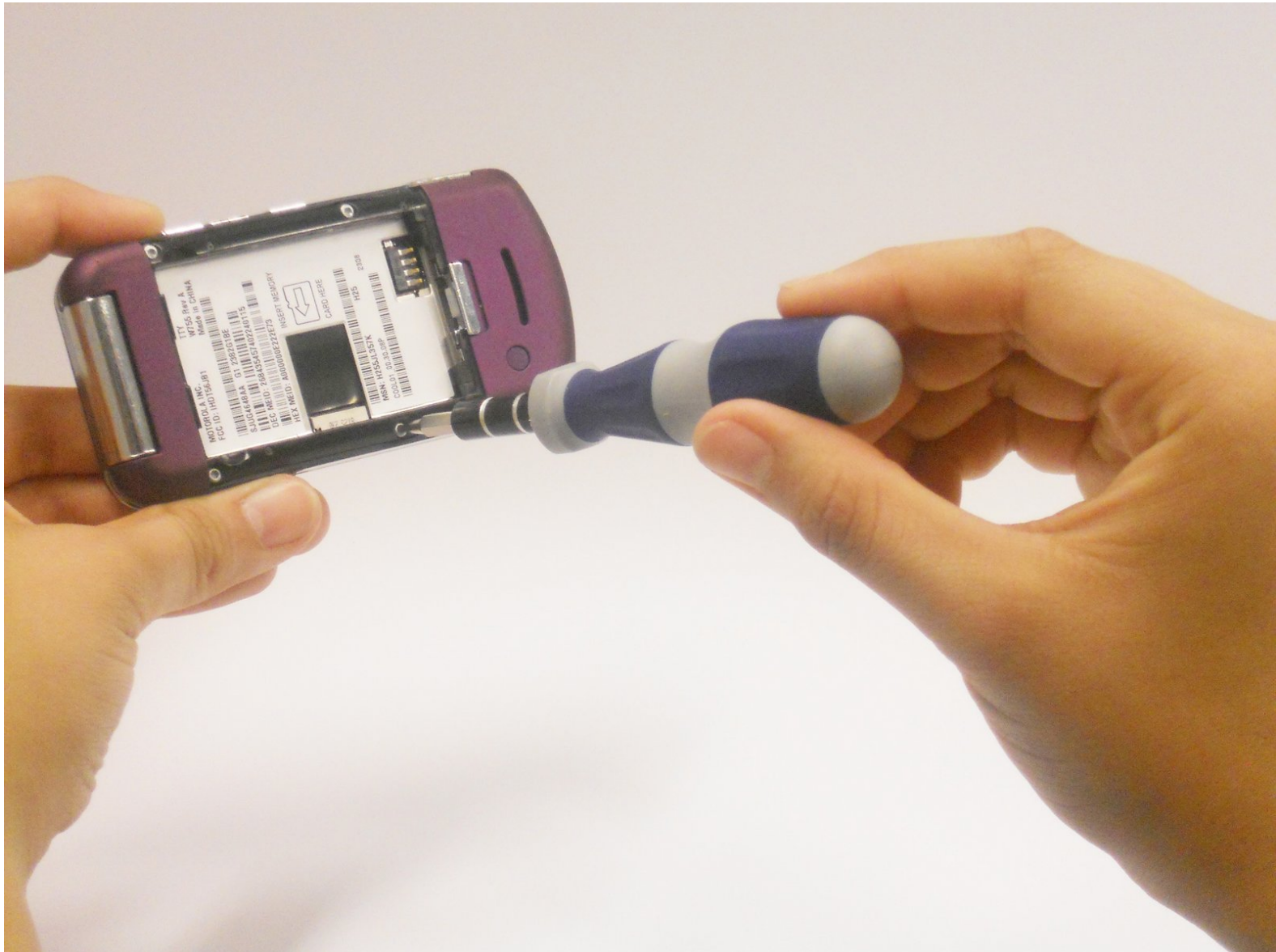




Motorola MOTO W755 Cell Phone Main Logic Board Replacement

This repair guide shows how to replace the logic board.

Written By: C Miller



INTRODUCTION

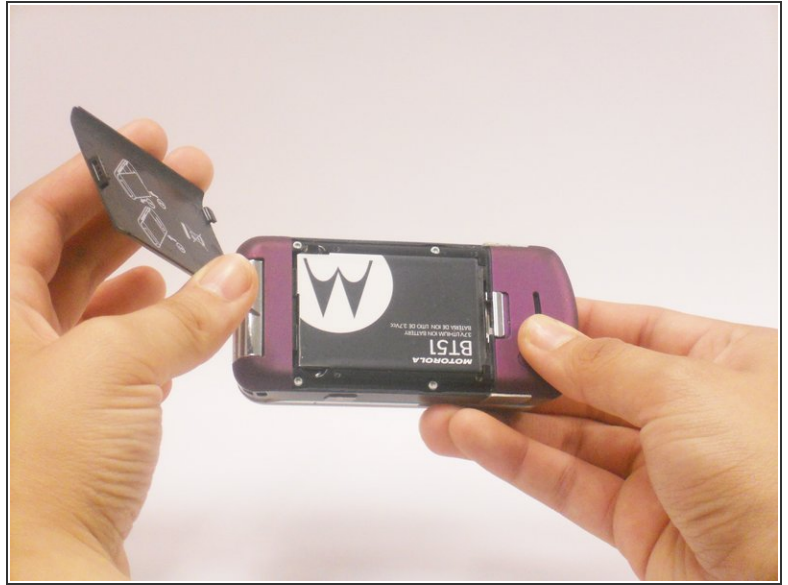
Replace the main logic board for your Motorola MOTO phone.



TOOLS:

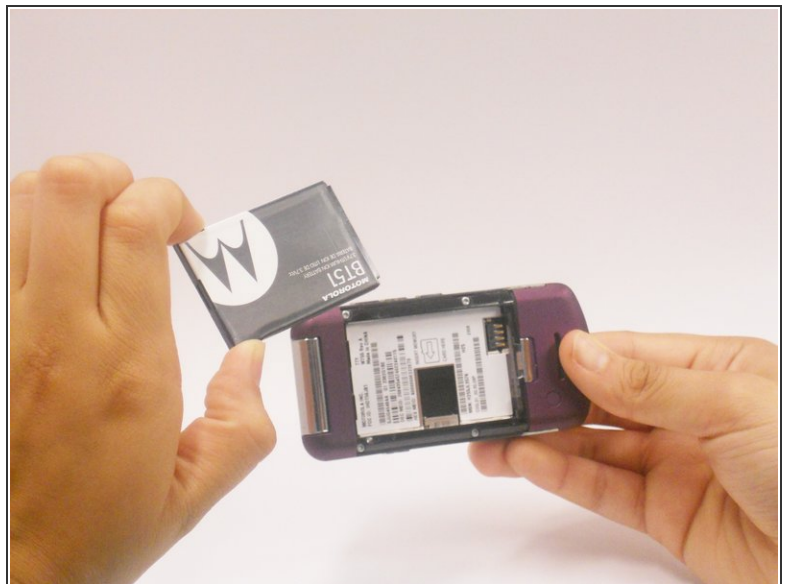
- [iFixit Opening Tools](#) (1)
 - [T5 Torx Screwdriver](#) (1)
-

Step 1 — Battery



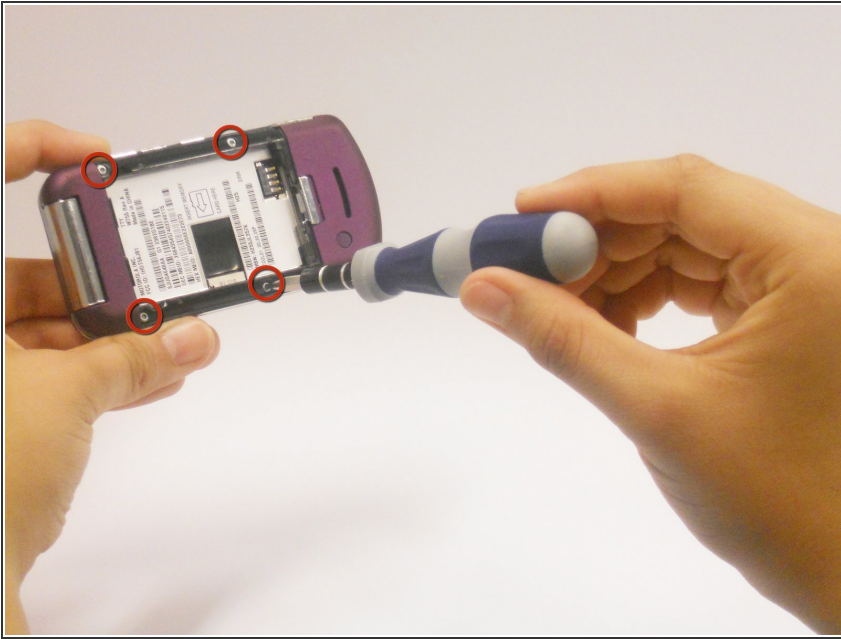
- Using your finger, press down on the clip holding the back cover on
- Pull the back cover off.

Step 2



- Place thumb and index finger in the spaces on either side of the battery.
- Pull battery out.

Step 3 — Main Logic Board



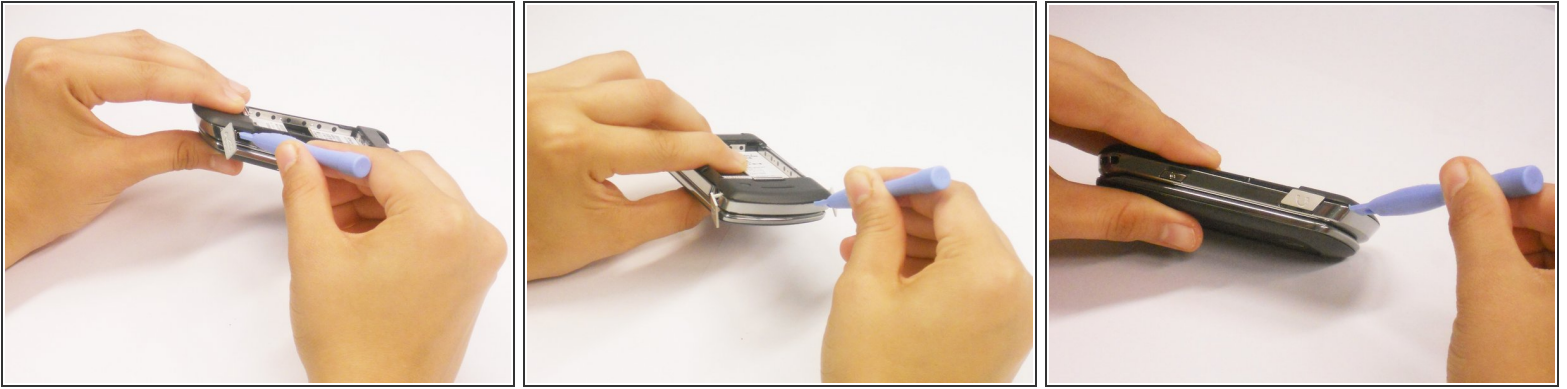
- Using the T5 Torx-screwdriver, remove the four 5.5 mm screws on the back panel.

Step 4



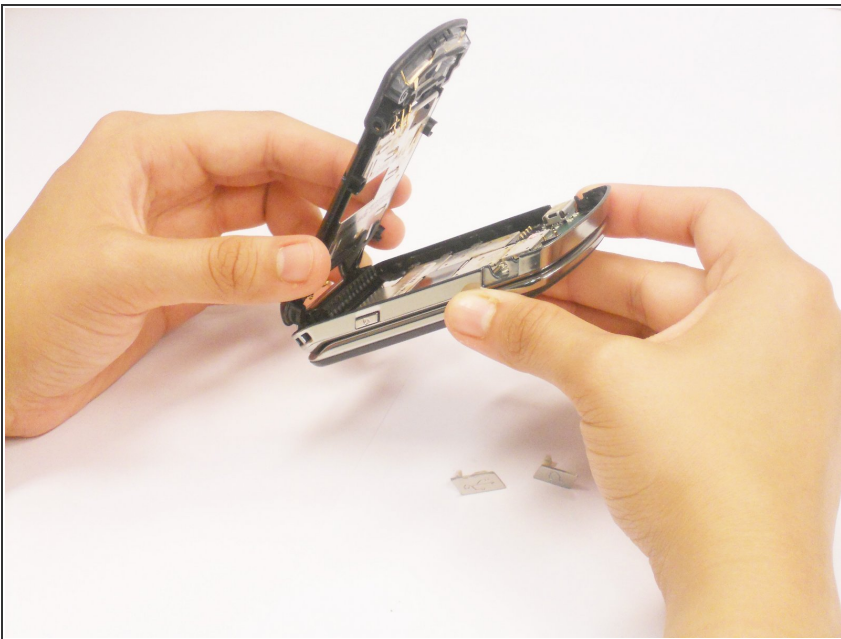
- Using a plastic opening tool, carefully peel back the rubber strip located at the bottom of the keypad
- Remove the two T5 Torx-screws underneath the rubber strip using the T5 Torx-screwdriver

Step 5



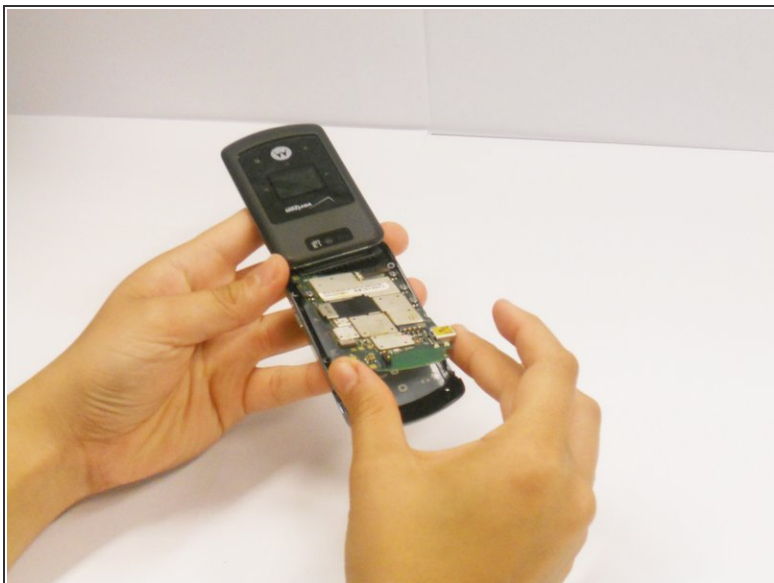
- Using the flat end of the plastic opening tool, insert it in the gap between the charging port and plastic at the bottom left side of the phone.
- Slide the opening tool around the phone clockwise until you reach the audio port.
- Twist the opening tool until the plastic pops off from the body of the phone. This make require a small amount of force.

Step 6



- Remove the plastic covering completely from the body of the phone.

Step 7



- Using the plastic opening tool, carefully unclip the cable ribbon from the main logic board. Be sure not to tear it because the flex is very fragile.
- Remove the main logic board.

To reassemble your device, follow these instructions in reverse order.