



Arrow Vane Replacement

This guide will show how to remove a broken arrow vane and replace it with a new one.

Written By: Alexandria Null



INTRODUCTION

This guide will show how to remove a broken arrow vane and replace it with a new one.



TOOLS:

- [Fletching jig](#) (1)
- [Fletching glue](#) (1)
- [Acetone](#) (1)
- [Paper Towels](#) (2)
- [Pocket knife](#) (1)
- [Q-Tips](#) (2)



PARTS:

- [Arrow vane](#) (1)

Must be the same size and brand as your other vanes.

Step 1 — Arrow Vane



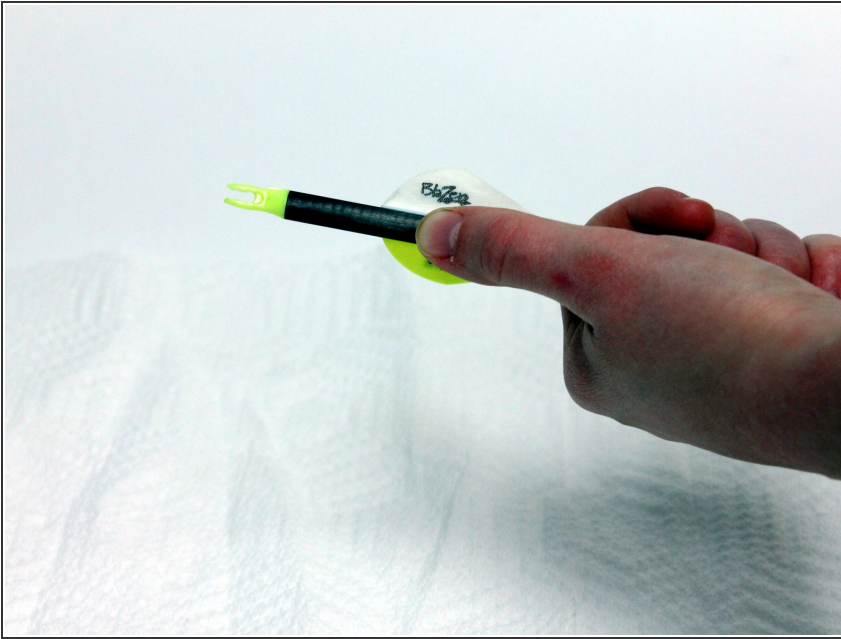
- Gather all supplies needed to refletch the arrow.
- Be sure the fletching jig is the correct jig for the amount of vanes on the arrow. The fletching jig in the following images is a three vane fletching jig.
- Lay down one of your paper towels where you plan to work.

Step 2



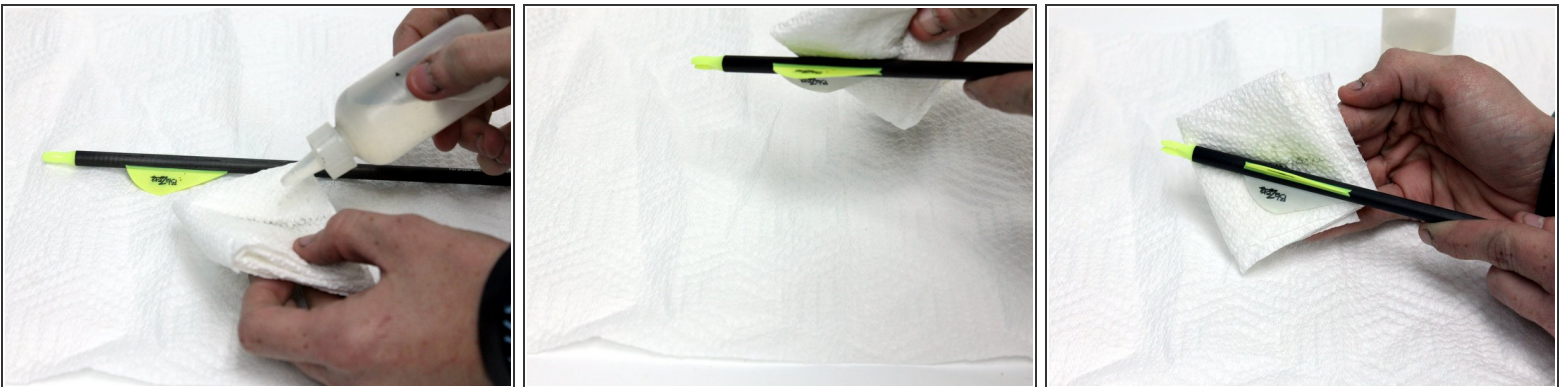
- Identify which vane is broken.
- If you can gently pull off the broken vane, do so, then proceed to step two. If not proceed to step two.

Step 3



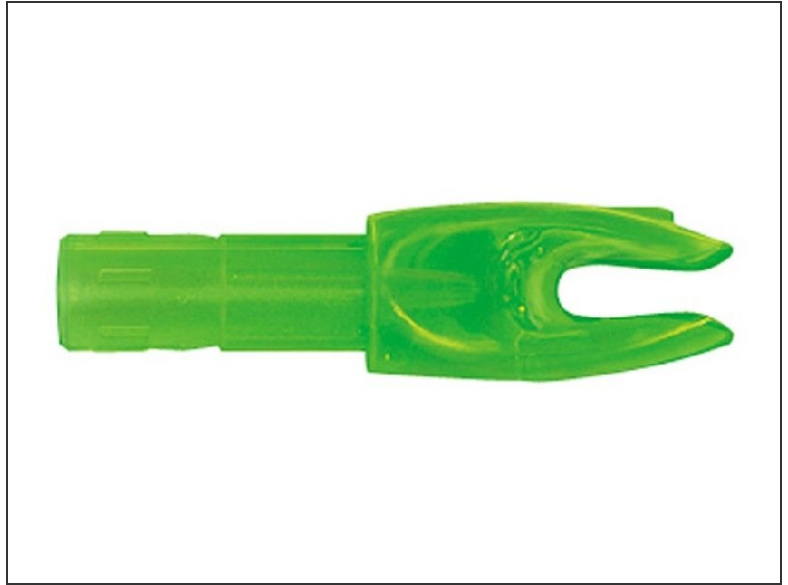
- Use a pocket knife to scrape off the broken vane and glue.
- Be sure to hold the blade away from you, at a 45 degree angle from the arrow.
- Periodically check the arrow, by rubbing your finger on the surface of the arrow, to see if all the glue has been removed.
- If all the glue has been removed the arrow will be smooth. If the glue hasn't been removed completely, your finger will feel small raises on the arrow.

Step 4



- Apply acetone to a paper towel and rub it on the area where the vane was removed.
- Be sure the paper towel is sufficiently soaked with acetone. If the acetone isn't rubbed on enough, the grease from your finger will cause the new vane to fall off.
- Be sure not to touch that part of the arrow you just cleaned for the rest of the process.

Step 5



- Put the arrow, nock first, into the fletching jig.
- Twist the nob on the fletching jig so that the missing vane is on top.
- If twisting the nob properly, the arrow will turn with you as you twist.
- The second picture is an example of what a nock looks like.

Step 6



- The supplies needed for this step are the following. The clamp, new vane, acetone, paper towel, q-tip, and fletching glue.
- Be sure to have all supplies close at hand.
- Glue dries fast, so you need to work at a quicker than normal pace. Don't work so fast that you mess up, but try to work swiftly when working with the fletching glue.

Step 7



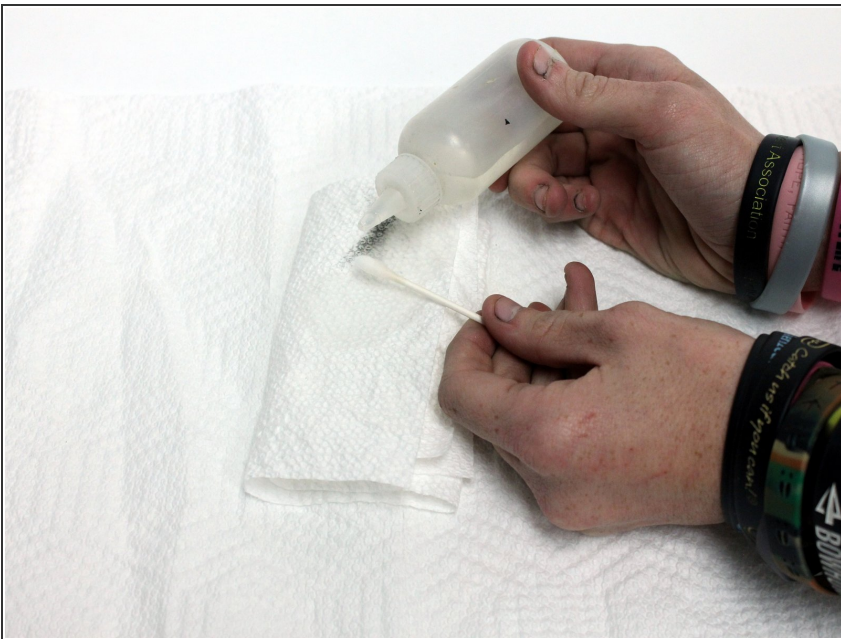
- Put the vane in the clamp, lined with the correct line on the clamp.
- With a three vaned arrow, the proper placement is usually the 3rd or 4th line on the clamp.

Step 8



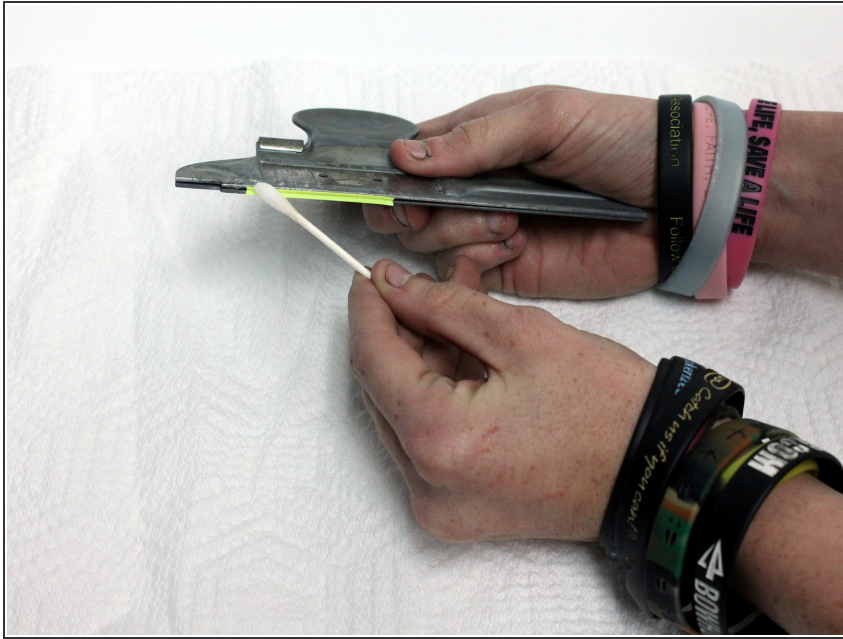
- Put the fletching jig clamp onto the fletching jig and slide it down evenly onto the arrow.
- Make sure the vane is even with the other vanes.
- If all vanes are even, continue to Step 9. If not, be sure to line up the new vane with the existing vanes.

Step 9



- Remove the clamp from the fletching jig; without taking the new vane out of the clamp.
- Be sure your paper towel is under you. Take a q-tip and pour acetone on the cotton part.

Step 10



- Wipe off the bottom of the vane with the acetone soaked q-tip.
- Let dry for 1 minute.

Step 11



- Apply a thin amount of fletching glue to the arrow vane.
- Be sure to not use too much. If there is too much glue, the vane will have a hard time staying in place.
- ⓘ Excessive glue causes an off-weight arrow. Therefore, if there is too much glue, your arrow won't fly correctly.
- ⓘ The second image in this step is an example of how much glue you should use.

Step 12



- Put the fletching jig clamp back onto the fletching jig and slide it down evenly onto the arrow.
- Let dry for 10 minutes.

Step 13



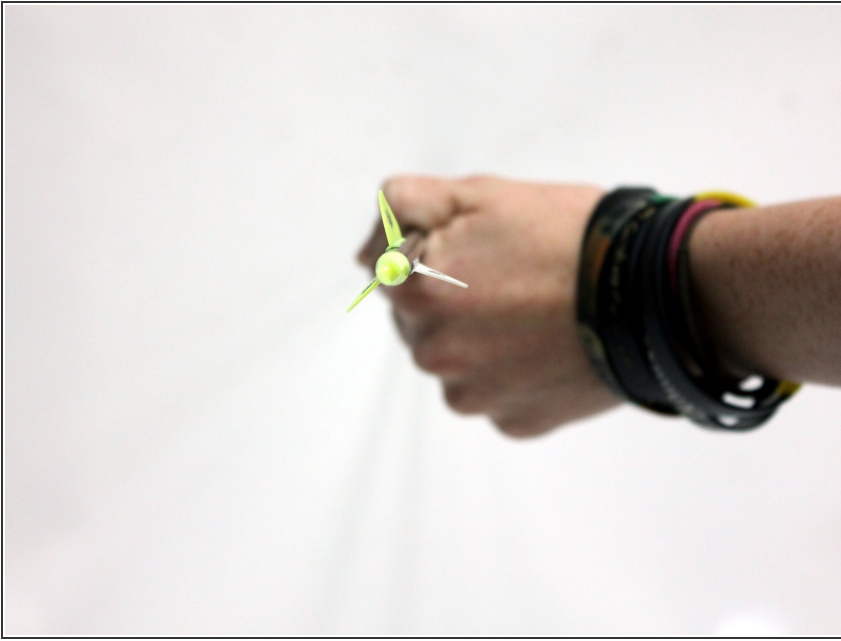
- When dry, remove clamp from fletching jig by holding the clamp open and lifting upward.
- Remove arrow from the fletching jig and place a small drop of glue at the top and the bottom of the new arrow vane.

Step 14



- Place arrow in a vertical position with the vanes at the top for maximum drying effect.
- Let dry for 3-5 minutes.

Step 15



- After the vane has finished drying; check to see if the vane is on correctly and straight. If so, the vane was properly replaced. If not, refer back to step 1 and start over.
- If the vane is fixed, you may apply a small amount of acetone onto another q-tip and wipe off any excessive glue. Be sure not to wipe the new arrow vane.

To reassemble your device, you must finish the instructions.