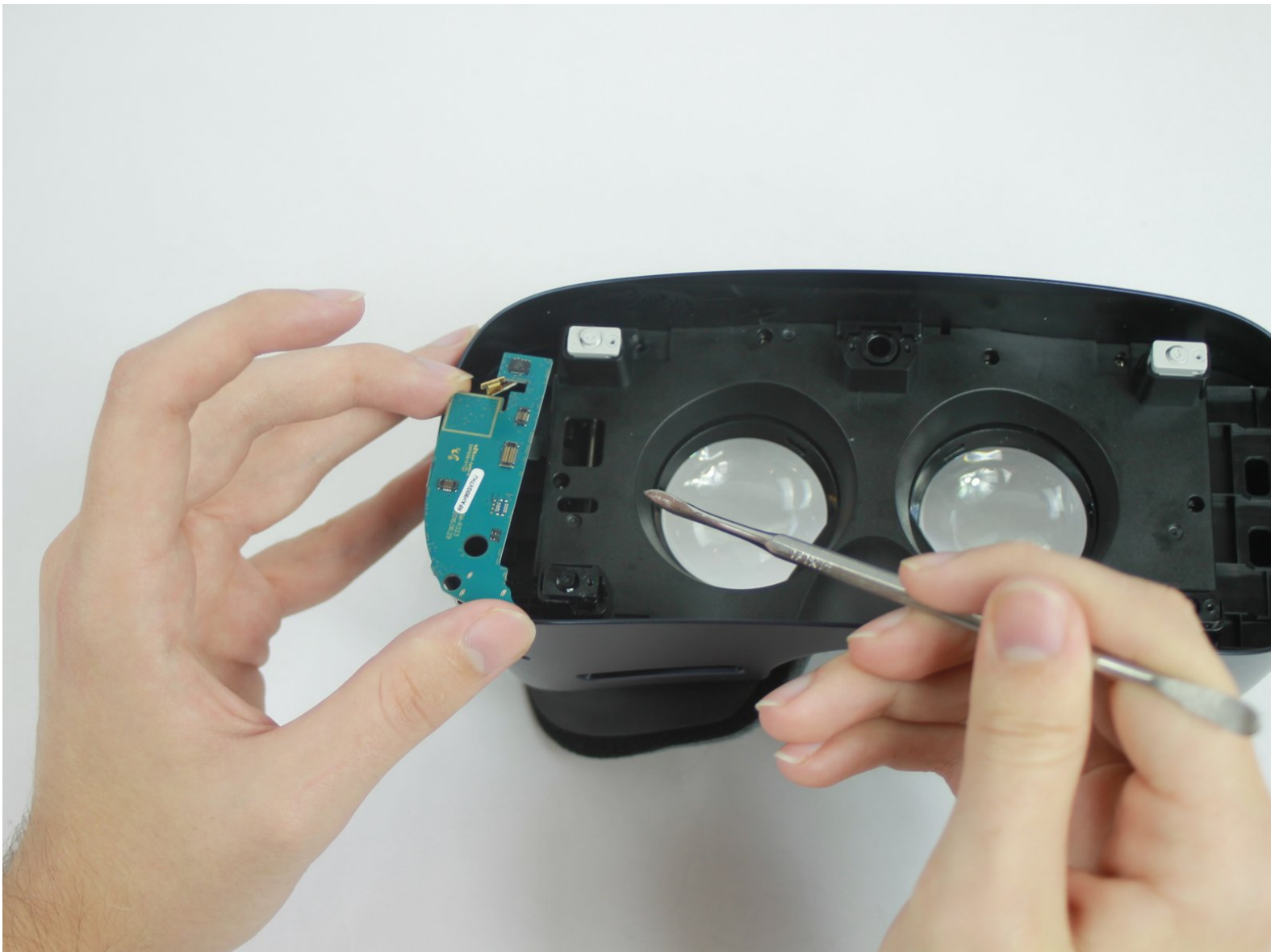




Samsung Gear VR Motherboard Replacement

This guide will explain how to remove and replace the motherboard of the Samsung Gear VR.

Written By: David Forlano



INTRODUCTION

The Samsung VR is controlled by a motherboard located in a small compartment under the phone holder. A wire harness clips into this motherboard, and if there is a loss of functionality with the headset the user may want to check to see whether this wire harness has come disconnected. This guide will instruct the user how to access the motherboard for repair or replacement.

The motherboard partially sits on the inner mask piece of the headset and must be removed in order to remove the inner mask piece.

Caution is required while working on the headset as a wire harness connects the USB adapter to the motherboard. Care should be taken not to put any strain on the wire and to open the headset from right to left.



TOOLS:

- [Phillips PH000 Screwdriver](#) (1)
- [iFixit Opening Tools](#) (1)
- [Metal Spudger](#) (1)



PARTS:

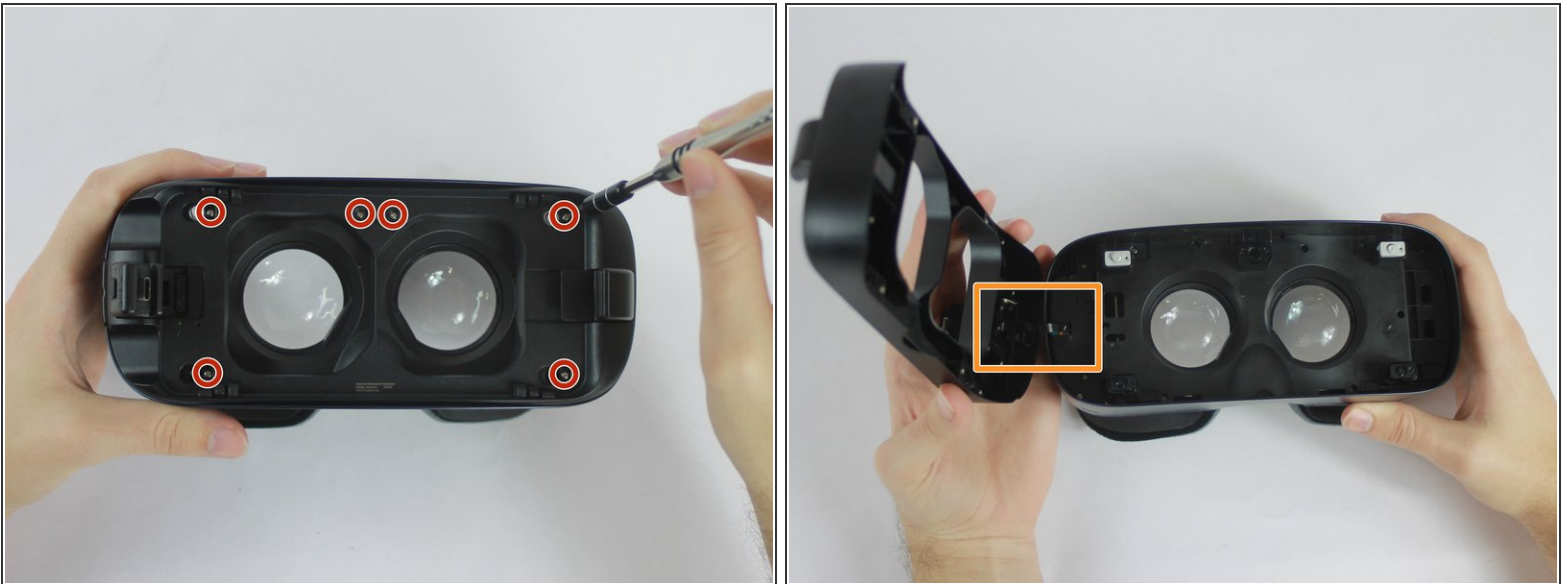
- [Samsung Gear VR Motherboard](#) (1)

Step 1 — Front Phone Mount



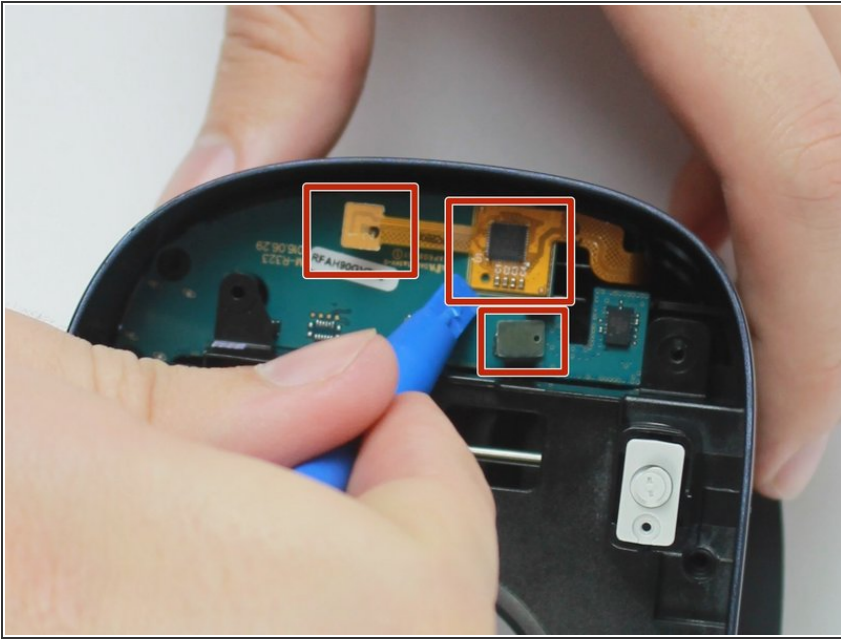
- Remove the front cover to access a plate that holds the phone in place during use.
- Remove the four corner screw covers with a metal spudger to reveal four screws.
- Remove the sticker located at the top center to reveal two additional screws.

Step 2



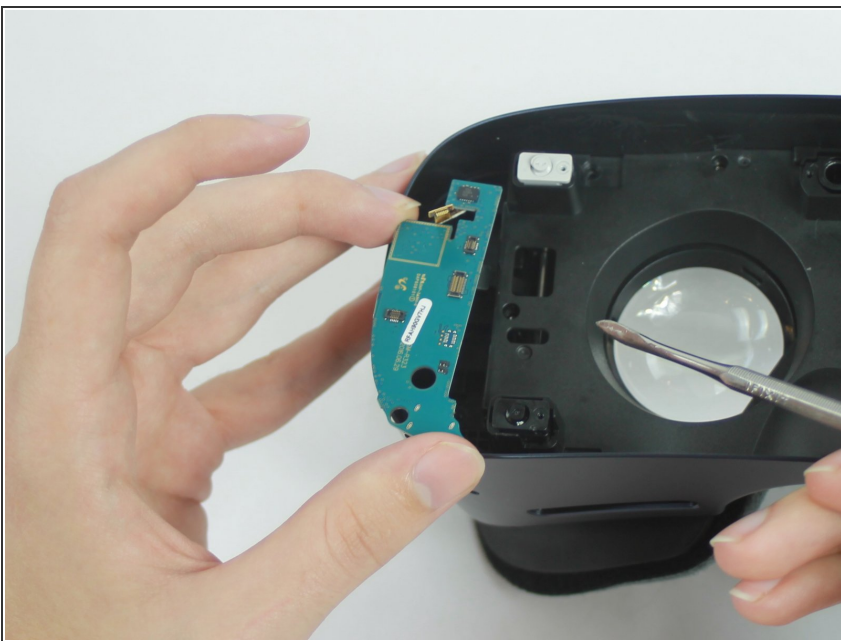
- Using the PH000 tip remove the six 0.5 cm screws that secure the front phone mount.
 - After the six 0.5 cm screws are completely removed lift the front phone mount up and to the left.
- ⚠ When handling your equipment be careful not to strain the wire harness located on the left side of the headset.

Step 3 — Motherboard



- Use the blue plastic opening tool to remove the rest of the the pop connectors from the motherboard.
- ⓘ The larger gold connector is lightly glued down so it may take more effort to remove than the others.

Step 4



- You can now remove the motherboard from the mask.
- ⚠ Make sure that nothing is connected to the motherboard before you try to remove it as pulling it with something connect might brake the connections.

To reassemble your device, follow these instructions in reverse order.