



# Samsung Gear VR Front Phone Mount Replacement

Remove the front phone mount of the device for cleaning and accessing other parts.

Written By: Garrett Moncrief



---

## INTRODUCTION

The first step to accessing the Samsung Gear VR's internal components is to remove the front phone mount.

Caution is required while working on the headset as a wire harness connects the USB adapter to the motherboard. Care should be taken not to put any strain on the wire and to open the headset from right to left.



### TOOLS:

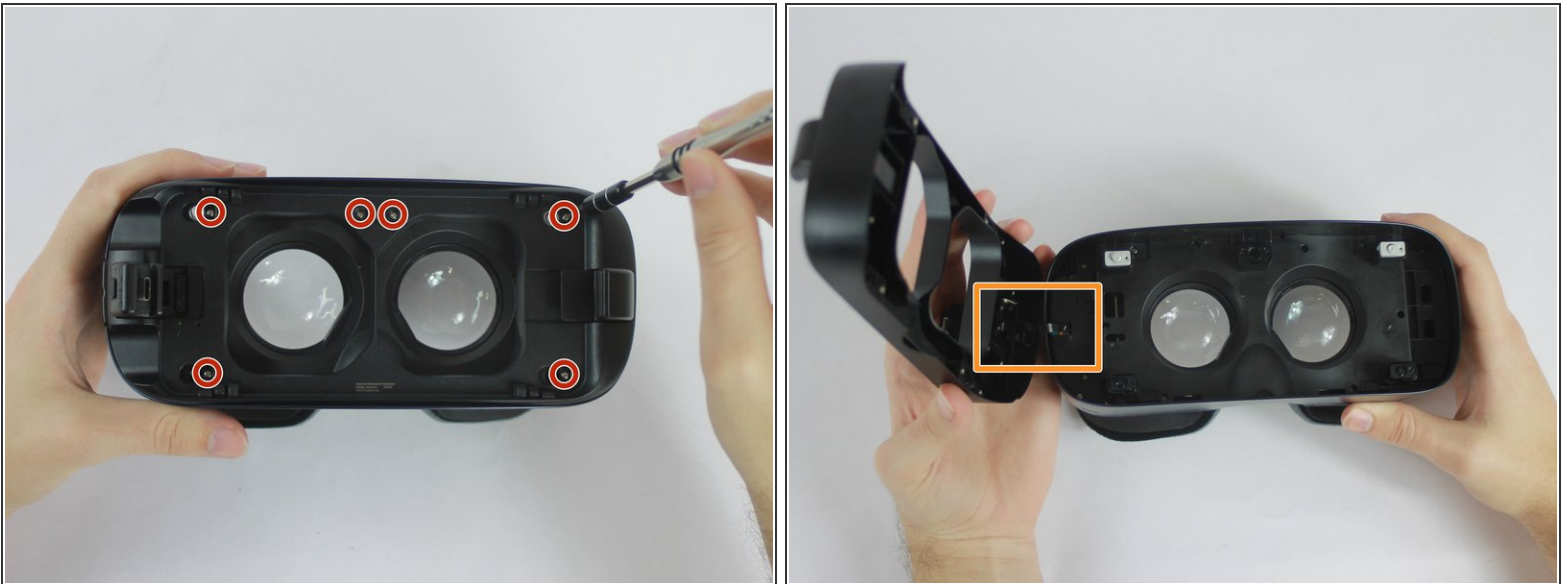
- [Phillips PH000 Screwdriver](#) (1)
  - [iFixit Opening Tools](#) (1)
  - [Metal Spudger](#) (1)
-

## Step 1 — Front Phone Mount



- Remove the front cover to access a plate that holds the phone in place during use.
- Remove the four corner screw covers with a metal spudger to reveal four screws.
- Remove the sticker located at the top center to reveal two additional screws.

## Step 2



- Using the PH000 tip remove the six 0.5 cm screws that secure the front phone mount.
  - After the six 0.5 cm screws are completely removed lift the front phone mount up and to the left.
- ⚠ When handling your equipment be careful not to strain the wire harness located on the left side of the headset.

To reassemble your device, follow these instructions in reverse order.