



# Samsung Galaxy Tab A 10.1 Screen Replacement

How to replace the screen in a Samsung Galaxy Tab A 10.1.

Written By: Isabella Li



## INTRODUCTION

If your screen is not responding, use this guide to properly replace the screen. If the digitiser is intact and you intend to reuse it, removal takes great care and plenty of patience.



### TOOLS:

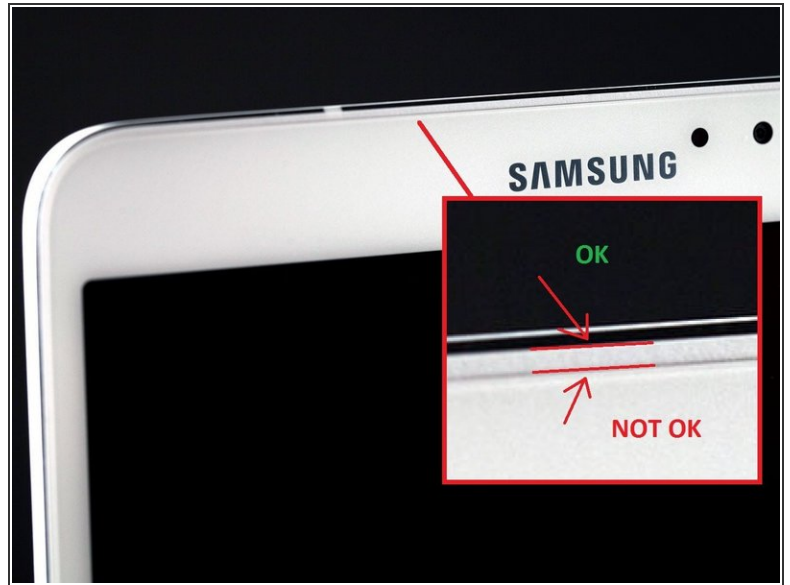
- [Heat Gun](#) (1)
- [Phillips #000 Screwdriver](#) (1)
- [iFixit Opening Tools](#) (1)
- [Jimmy](#) (1)



### PARTS:

- [Galaxy Tab A 10.1 \(Wi-Fi\) Screen](#) (1)

## Step 1 — Back Panel



- Have the front of the device facing you.
- Begin near one of the curved edges of the device (see photo two for visual example).
- Place a plastic opening tool between the front and back panels.

⚠ If a plastic opening tool doesn't work, using a metal spudger may work, but it may damage the plastic on the device.

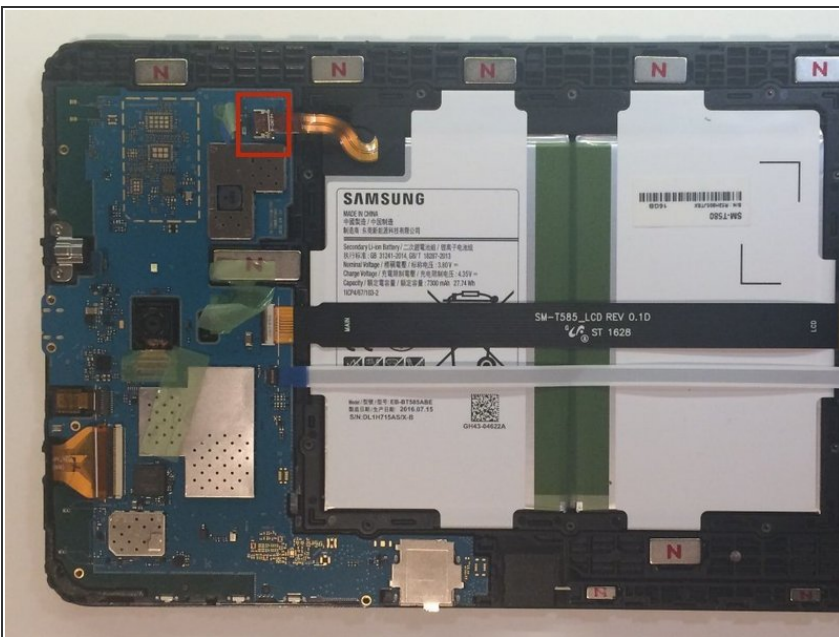
⚠ Remember to remove the micro SD card (if present) before you begin.

## Step 2



- Once the plastic opening tool is fully inserted, wedge it around the device's edges to separate the panels.
- Lift the back panel off of the device.
- i** The back panel will make a clicking noise while being lifted off of the device.

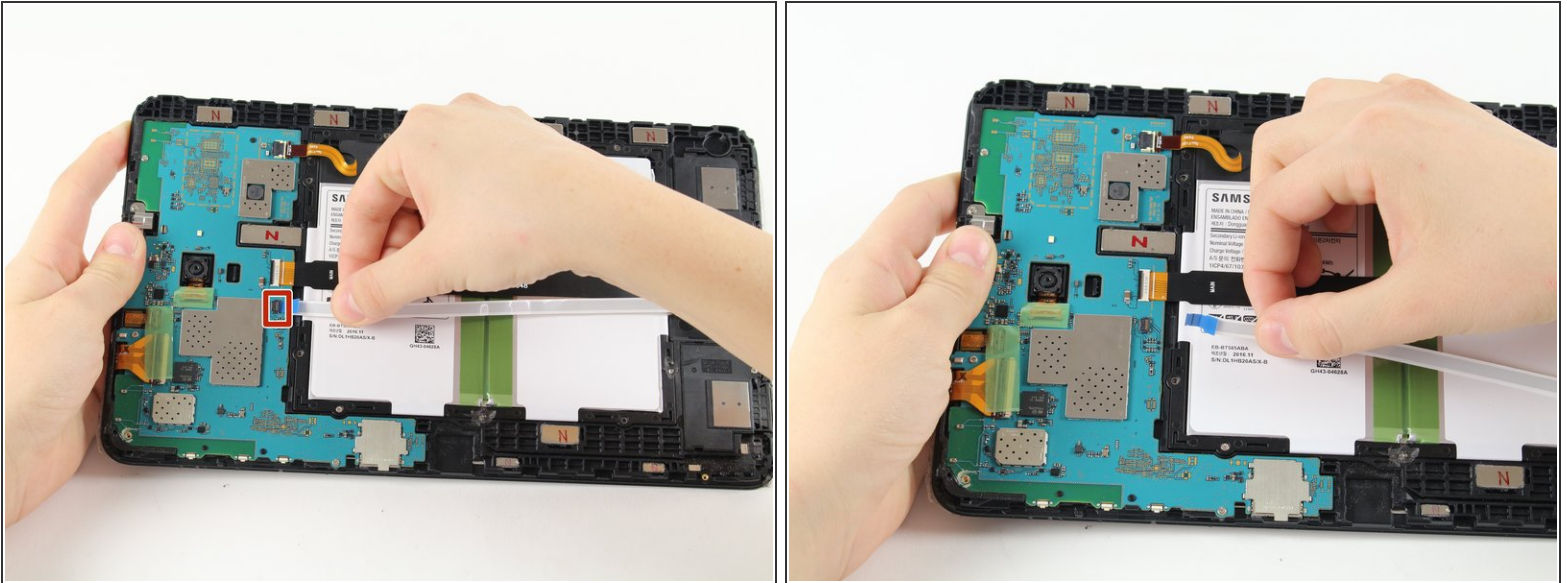
## Step 3 — Disconnecting the battery



- Remove the adhesive film and flip up the retaining flap on the ZIF battery connector.
- Slide the orange battery ribbon cable out of the ZIF connector.

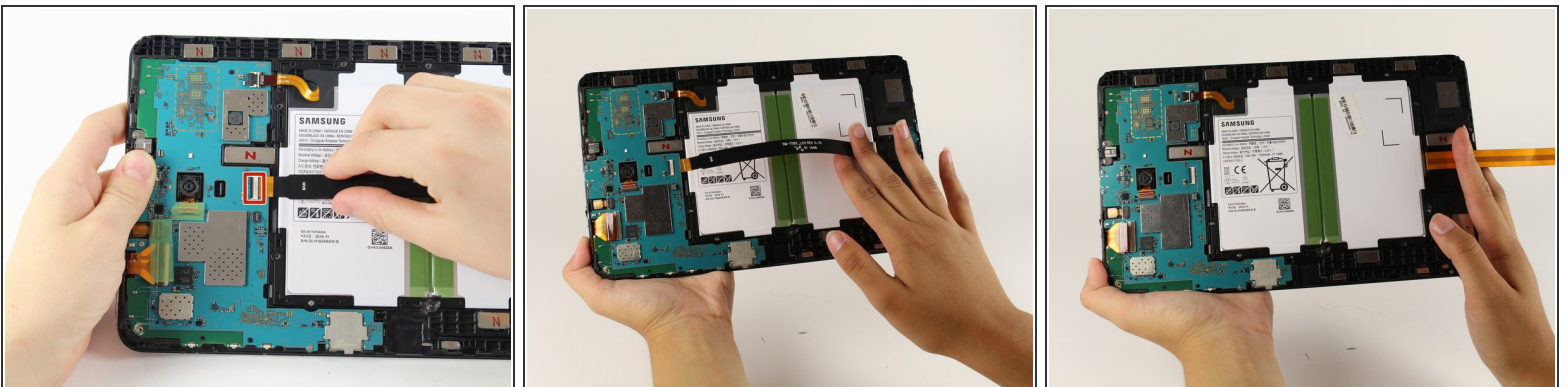


## Step 4



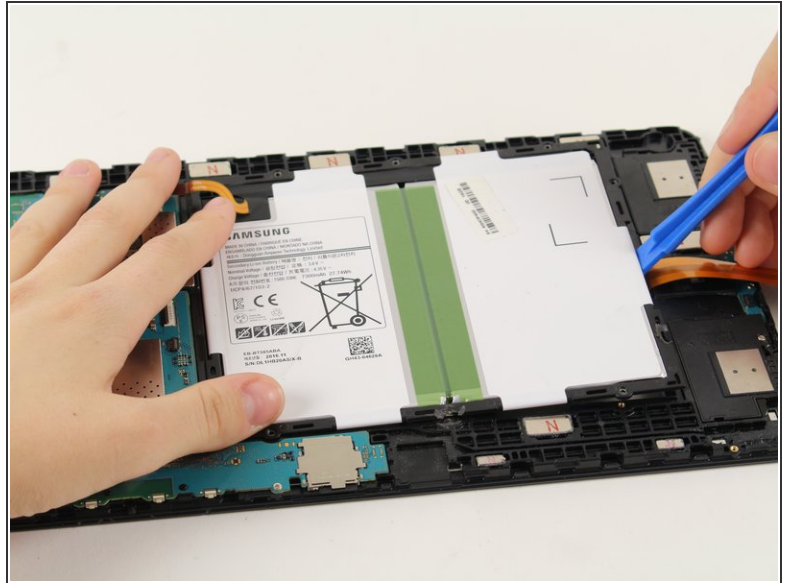
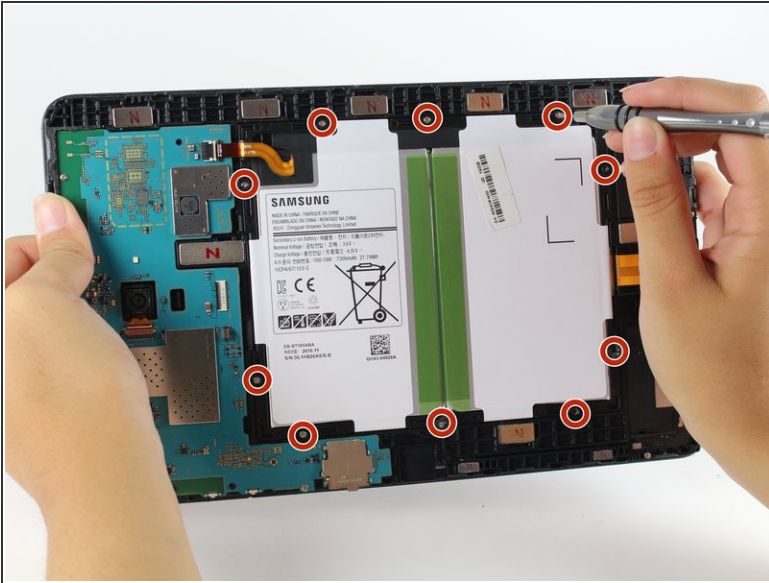
- Remove the adhesive film, lift the retaining tab and withdraw the white speaker ribbon.

## Step 5



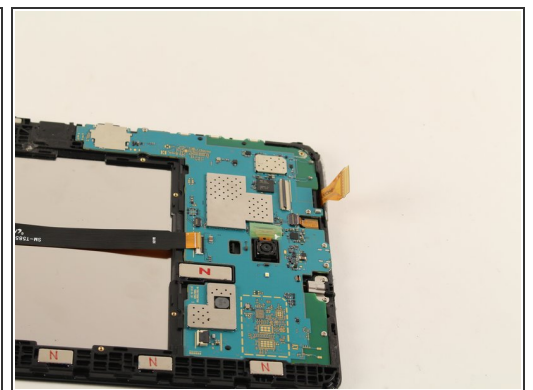
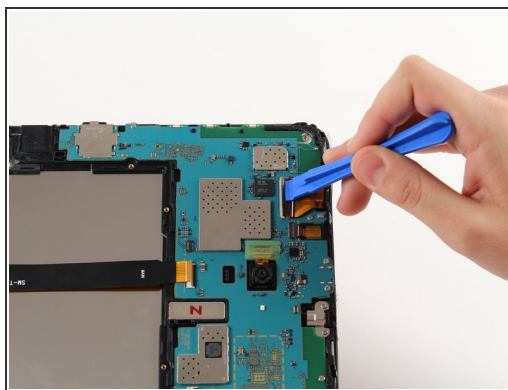
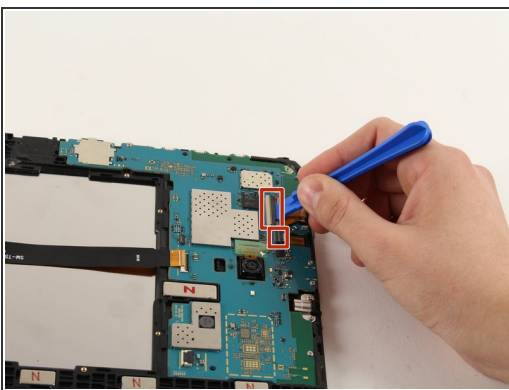
- Lift the retaining tab and withdraw the black LCD ribbon.

## Step 6 — Battery removal



- Using a Phillips #000 screwdriver, remove the ten 4 mm screws around the battery.
  - Slide a plastic opening tool under the bottom of the battery close to the speakers and lift up.
- ⚠ The large rectangular white and black piece is the entire battery. Be careful not to puncture it.

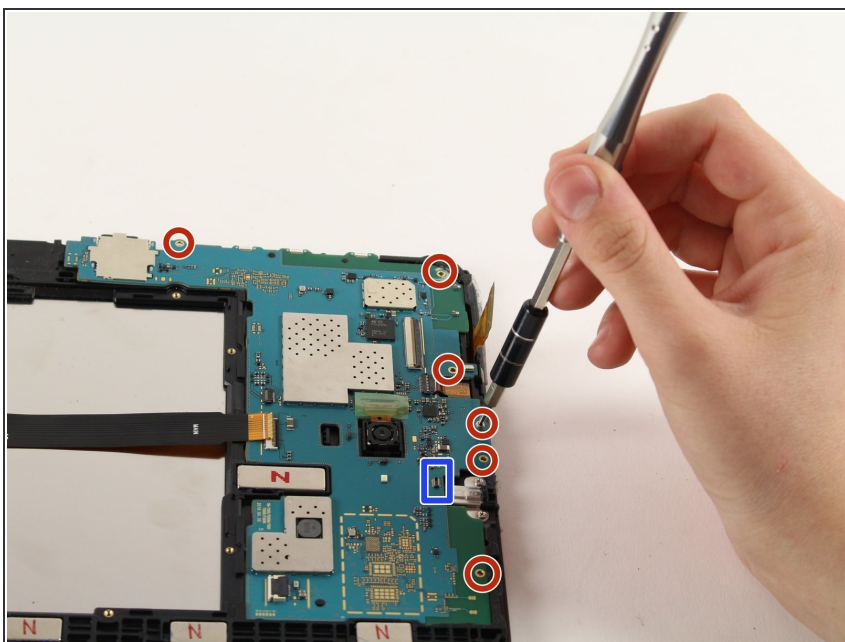
## Step 7 — Motherboard



- Flip up the two ZIF connectors on the motherboard using the plastic opening tool.
- Slide the orange ribbon cables out of the ZIF connectors.
- Remove the front-facing camera.

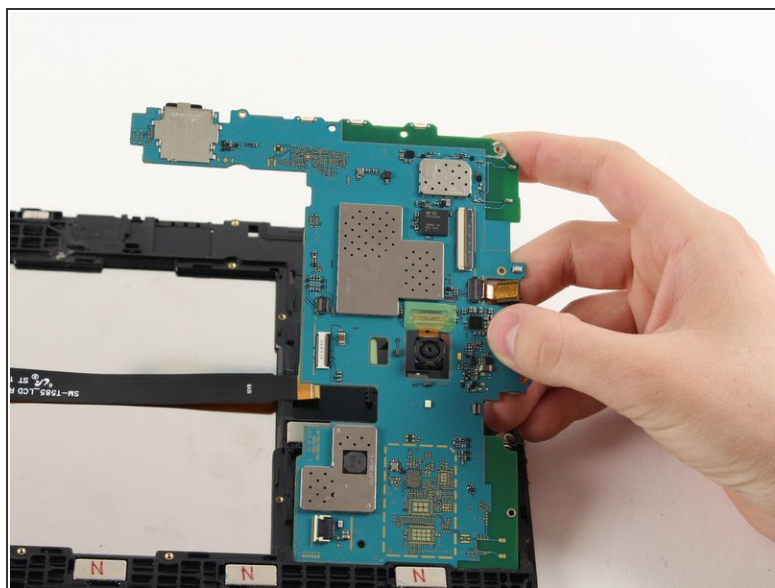
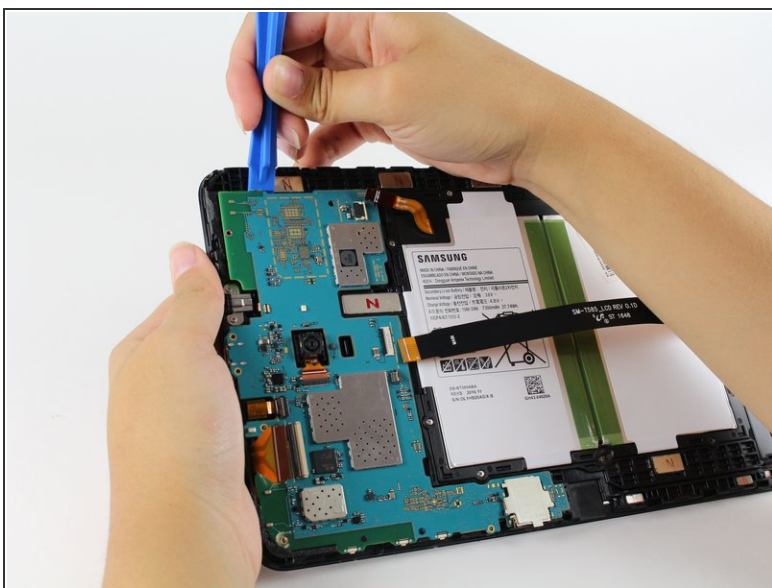


## Step 8



- Disconnect the headphone jack from the motherboard.
- Use a Phillips # 000 to remove six 4mm screws.


## Step 9



- Lodge the plastic opening tool under and lift the motherboard out of the tablet.
- ⚠ Be careful not to snag any connectors.
- Remove the metal bracket that was underneath the charging port and set aside.

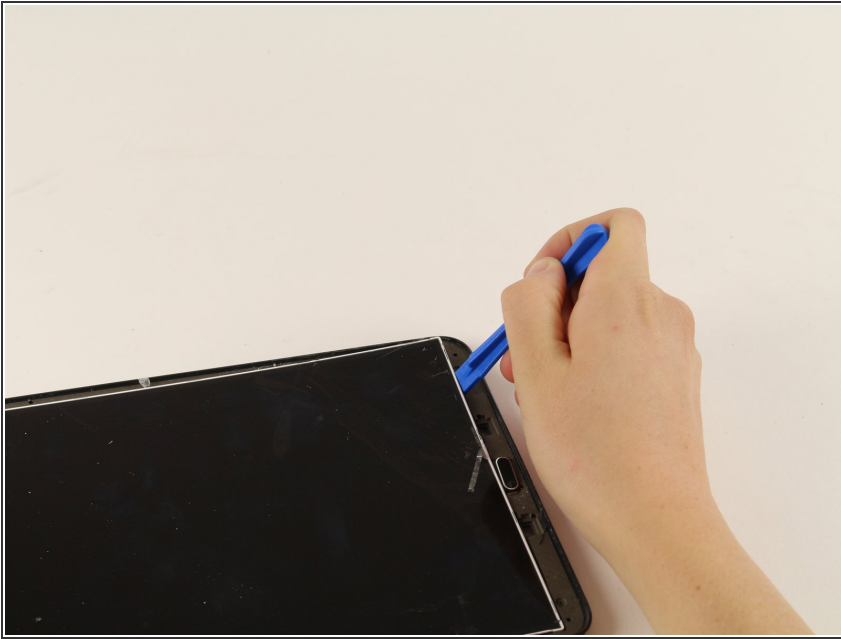
## Step 10 — Screen



-  The screen may crack during removal, so be wary of broken glass. Apply heat as necessary around the edges of the screen to loosen the adhesive, but be careful not to melt the plastic frame of the tablet.
- Starting on the side of the tablet near the bottom, heat the area and insert a metal jimmy or opening pick between the digitizer and the frame.
  - Separate the adhesive on the bottom of the tablet first, then work up the sides. The digitizer ribbon cable is located at the top and passes through a slot in the mid-frame. It is easily torn or damaged in the final stages of removing the glass.
  - If the glass is intact and you intend to reuse it, take care not to insert the jimmy further than the width of the black screen border or you risk damaging the digitiser, which is a thin plastic film stuck to the back of the glass.
  - The adhesive tends to stick to the plastic mid-frame rather than the glass but it will separate more easily and cleanly from the midframe if you can start it lifting at one point. This will also reduce the risk of damaging the digitiser film.



## Step 11



- Turn the tablet over and lodge the plastic opening tool under the screen to take it out of the device.
- The LCD panel is stuck to the mid-frame with double sided tape. Lift gently and progressively, giving the adhesive time to give way.

To reassemble your device, follow these instructions in reverse order.