



Xbox One Wireless Controller Model 1708 Top Motherboard Replacement

This guide will show you how to access and...

Written By: Lien (Ally) Quan



INTRODUCTION

This guide will show you how to access and replace the top motherboard. Soldering is required, so the link to the [soldering guide](#) is included to help you.

TOOLS:

[Tweezers](#) (1)
[iFixit Opening Tool](#) (1)
[TR9 Torx Security Screwdriver](#) (1)
[T6 Torx Screwdriver](#) (1)

PARTS:

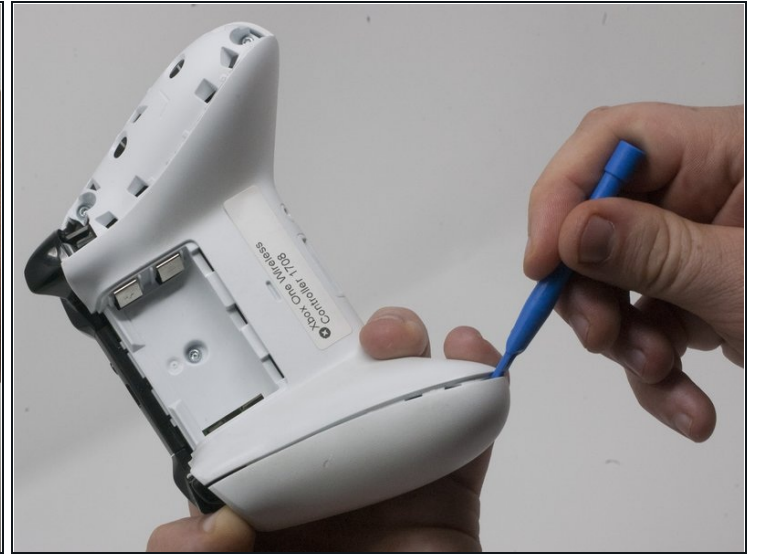
[Xbox One Controller \(1708\) Midframe Assembly](#) (1)

Step 1 — Cover Plate



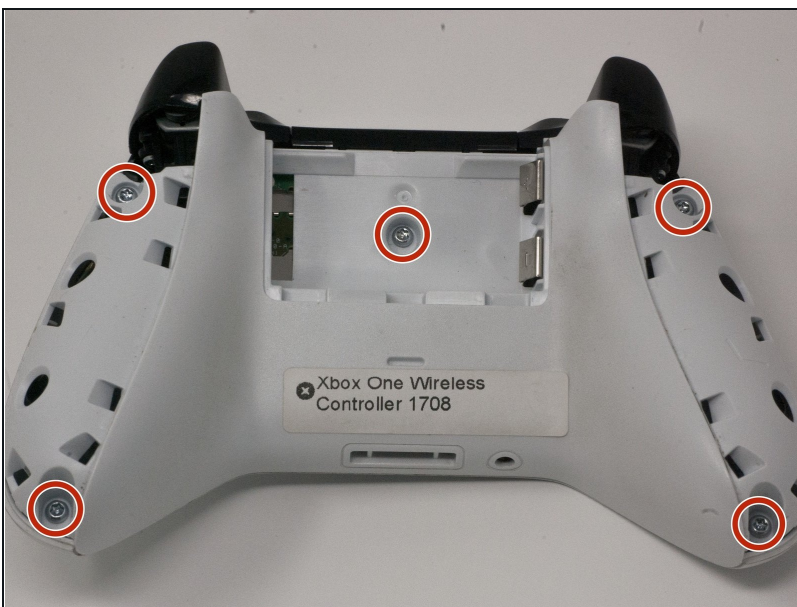
- Slide the battery cover toward the top of the controller to remove it.
- Lift up the batteries or the battery pack from the battery compartment.

Step 2



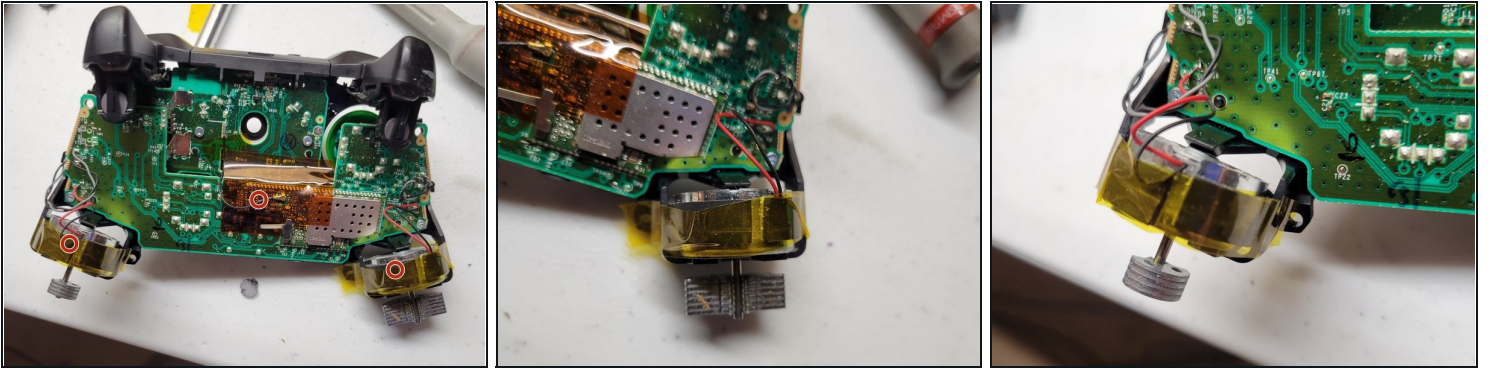
- Insert a plastic opening tool into the top seam, and gently work the opening tool to the bottom of the controller.
- Continue using the opening tool to gently pry the side plate off of the controller.
- Repeat this process for the second side plate.

Step 3



- Gently peel the battery label or punch a hole in the center of the sticker in the battery compartment to reveal the hidden screw.
- Remove the five 9mm torx-9 security screws from the back of the controller.

Step 4 — Tape Shock Motors in place



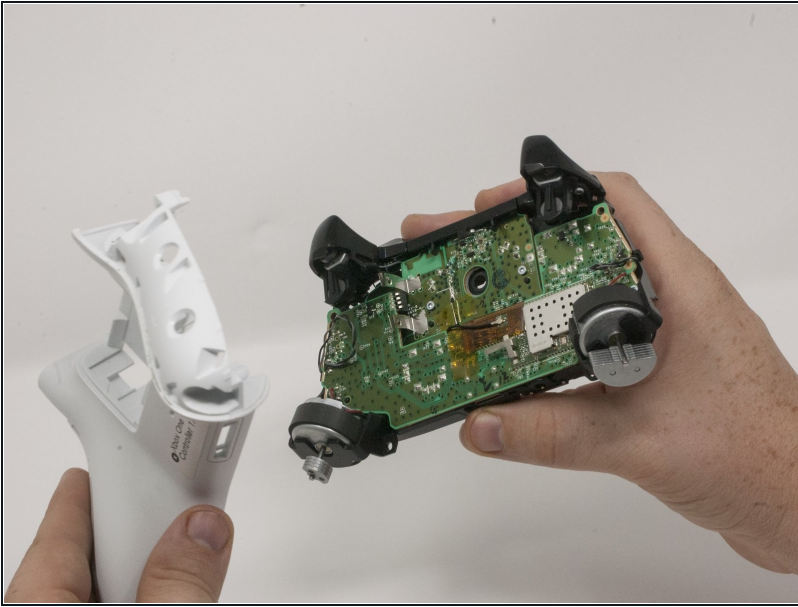
- Tape the Rumbler/shock motors in place.
- This will prevent the motors from falling out.

Step 5



- Orient the controller so the front plate is facing up.
- Lift the front cover off of the controller.

Step 6



- Turn the controller face down and gently lift the rear plate.

⚠ Be careful with the rumble motors, as they tend to fall out, risking damage to the motherboard.

Step 7 — Directional Pad



- Turn the device over and remove the directional pad by gently pulling it away from the controller.

Step 8 — Joystick Caps



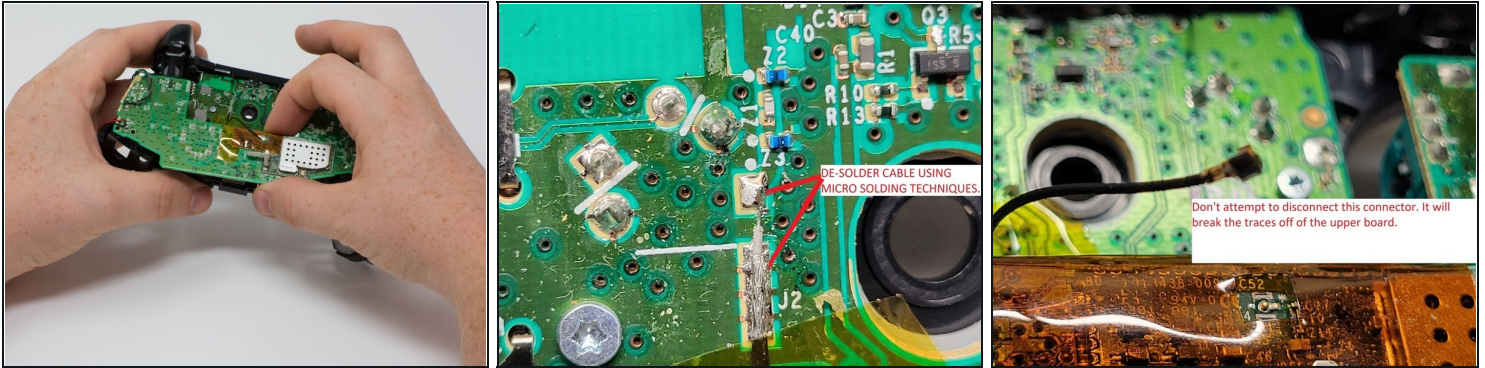
- Pull the joysticks off of the controller.

Step 9 — Top Motherboard



- ⚠ If the rumble motors fall out of frame, the wires may disconnect from the motherboard. The wires will have to be soldered to reattach the motor.
- Turn the device over and remove the two 7mm torx-6 screws in the bottom left and right corners.

Step 10 — De-soldering required



- Firmly grasp the top and bottom motherboards in opposite hands, then gently pull them apart.
- ① The top motherboard is still connected to the bottom motherboard. To fully separate the top motherboard, you will need to use a soldering iron.
- ⚠ **Warning:** Do not attempt to disconnect the shielded (gold colored) connector as it is extremely fragile you will break it. It runs between the two boards.
- ⚠ **De-solder the shielded cable from the lower board instead of attempting to disconnect the connector. De-solder using micro soldering technique.**

To reassemble your device, follow these instructions in reverse order.