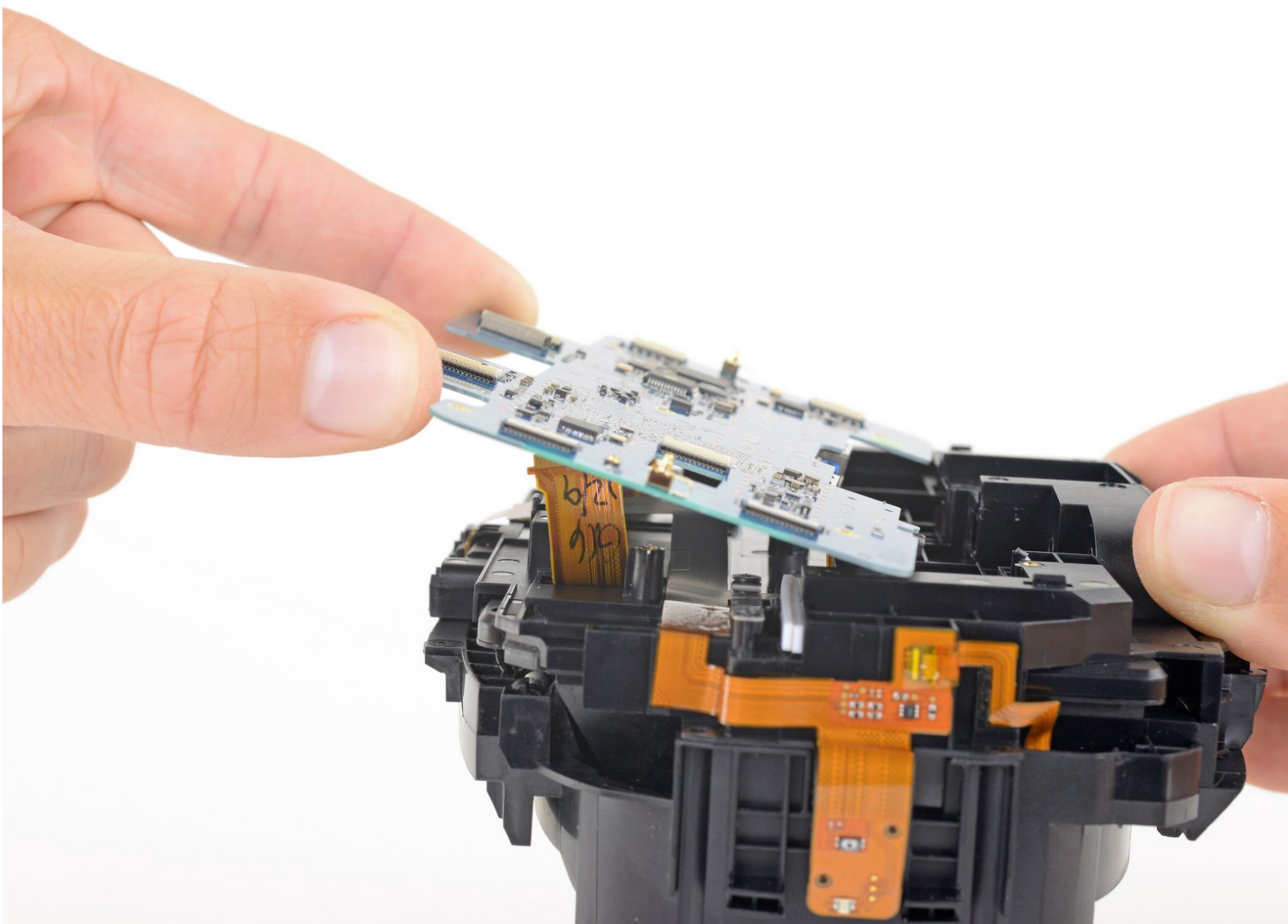




# HTC Vive Motherboard Replacement

Use this guide to remove or replace the...

Written By: Adam O'Camb



# INTRODUCTION

Use this guide to remove or replace the motherboard in an HTC Vive.

You'll need a narrow, long-shaft driver to reach some of the screws in this guide.



## TOOLS:

- [T5 Torx Screwdriver](#) (1)
- [Spudger](#) (1)
- [Phillips PH000 Screwdriver](#) (1)
- [Tweezers](#) (1)



## PARTS:

- [HTC Vive Headset Motherboard](#) (1)

## Step 1 — Open the cable compartment



 **Be sure to power down and disconnect your Vive before beginning.**

- Place a finger on the top edge of the compartment cover assembly and slide the assembly toward the front of the Vive until it comes loose from the headset.
- Lift the cover away from the headset and slide it up the cables until it's out of the way.

## Step 2 — Unplug the HDMI cable



- Lift the HDMI cable straight up to unplug it from the headset.

### Step 3 — Unplug the remaining cables



- Repeat the lifting and unplugging process with the remaining USB, power, and audio cables.

### Step 4 — Unscrew the head strap mounts



**⚠ Be sure to power down and disconnect your Vive before beginning.**

- Use a T5 Torx driver to remove the two 12 mm-long screws securing the head strap mounts on either side of the headset.
- ⓘ For some devices, a T6 Torx driver may work better.
- ⓘ The mounts may fall off when the screws are removed, so be careful not to lose any parts.



## Step 5 — Remove the head strap mounts



- Remove both head strap mounts.

## Step 6 — Remove the facerest



- Slide the facerest straight away from the headset to remove it.

## Step 7 — Unscrew the outer shell



- Use tweezers to remove the small stickers over the four screws securing the outer shell.
- Use a T5 Torx driver to remove the four 3.4 mm-long screws securing the outer shell.

## Step 8 — Remove the outer shell



- Grasp the top edge of the right half of the outer shell, behind the component cover and near the seam in the center. Pull it to the right and upward, away from the headset to release the clip securing that part of the shell.

## Step 9



- Grasp the right half the outer shell and pull it to the right and toward the front of the headset in a twisting motion until you feel the clips on the front of the cover release.

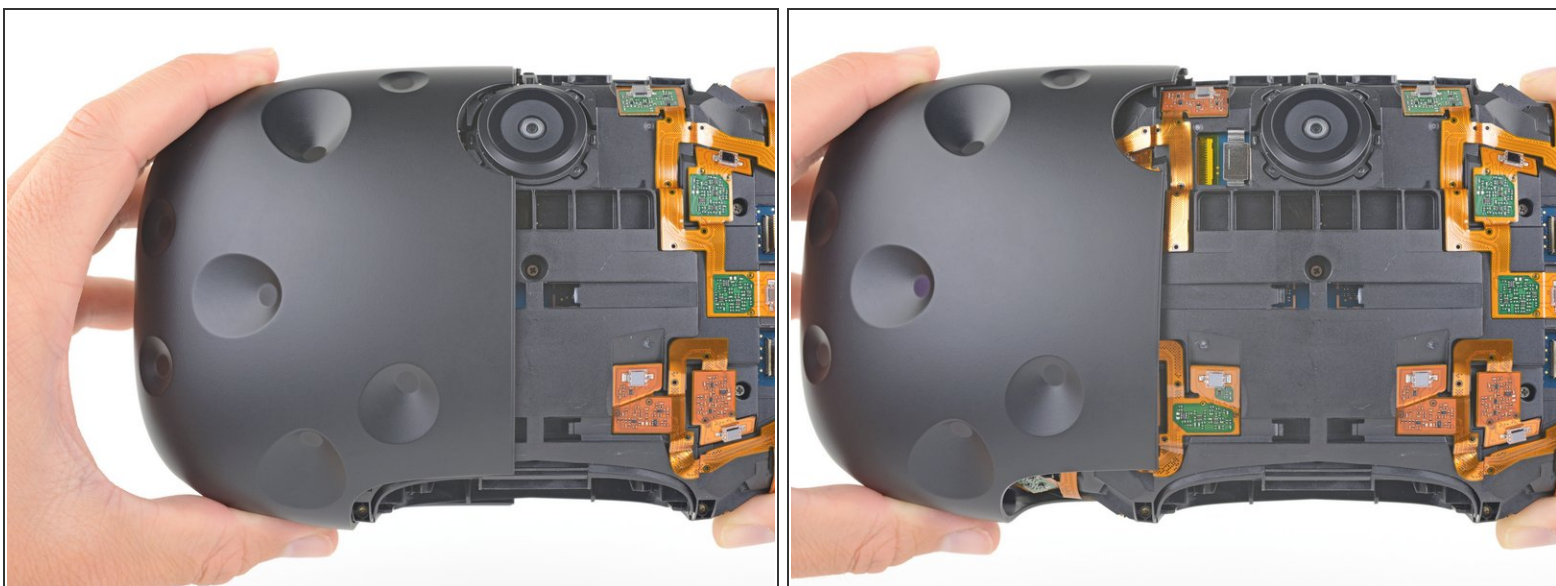
## Step 10



- Slide the right side of the outer shell to the right and off of the headset.

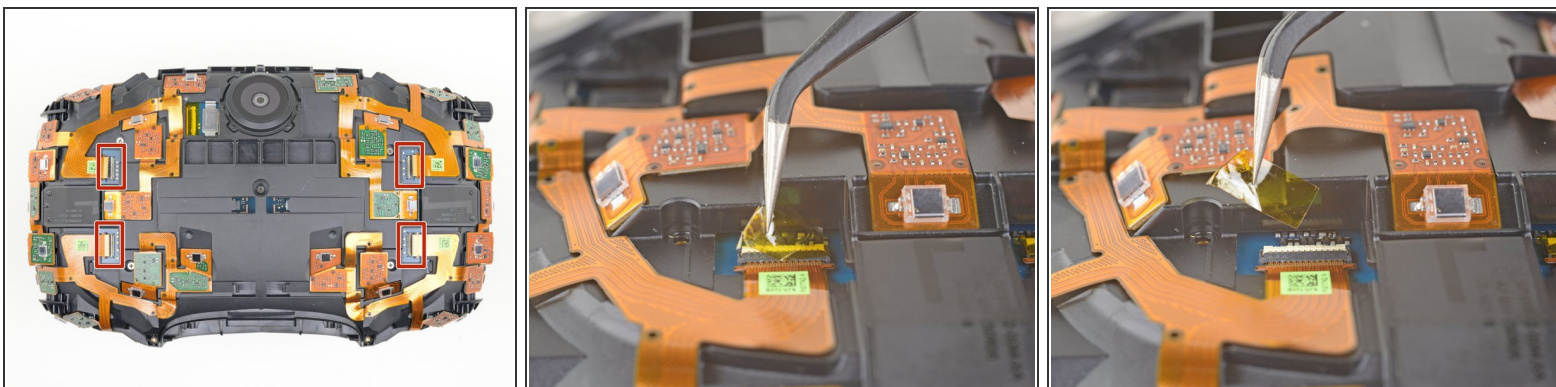


## Step 11



- Repeat the last three steps for the left side of the outer shell and remove it.

## Step 12 — Disconnect the sensor array cables



- Use tweezers to remove the clear tape over all four of the sensor array cable connectors.

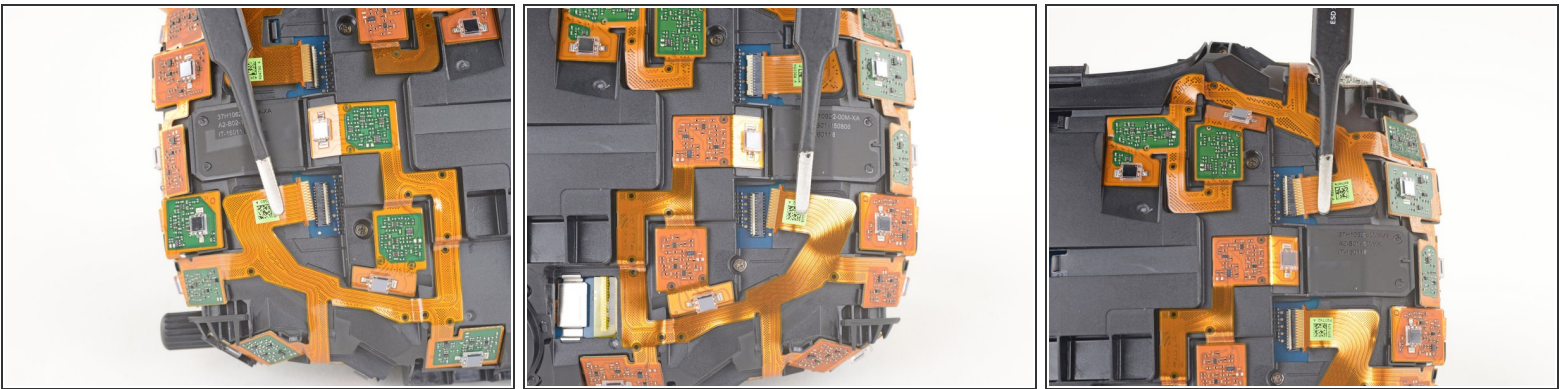


## Step 13



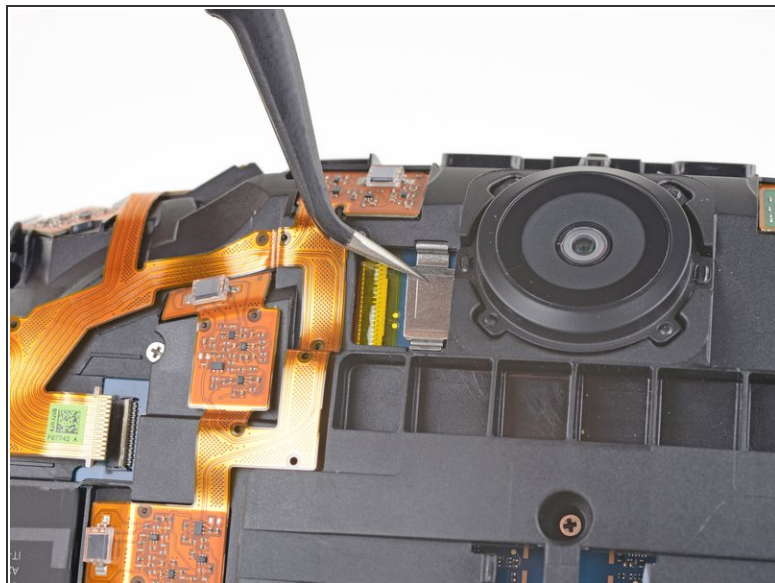
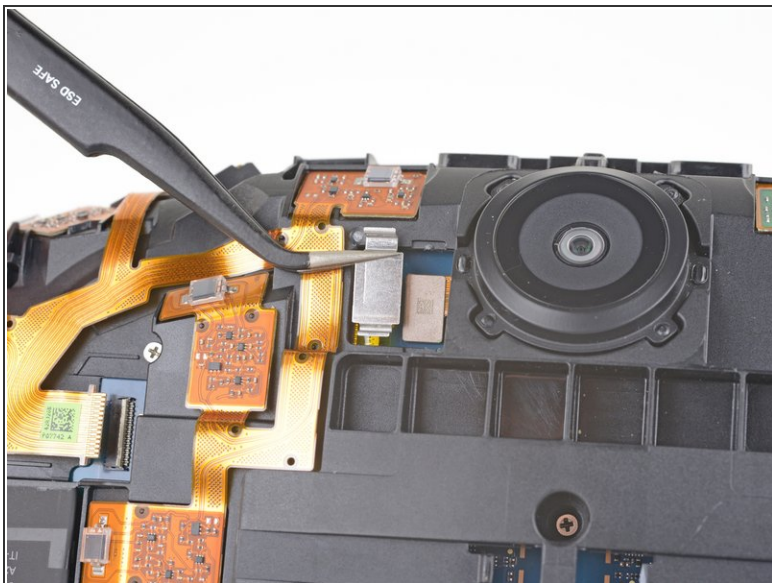
- Use the pointed end of a spudger to flip up the small locking flap on one of the sensor array [ZIF connectors](#).
- Slide the cable straight out of its socket on the motherboard.

## Step 14



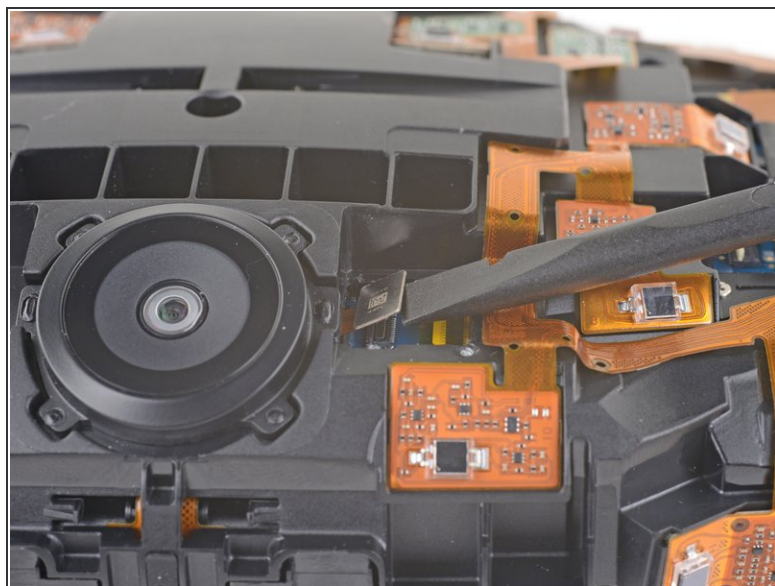
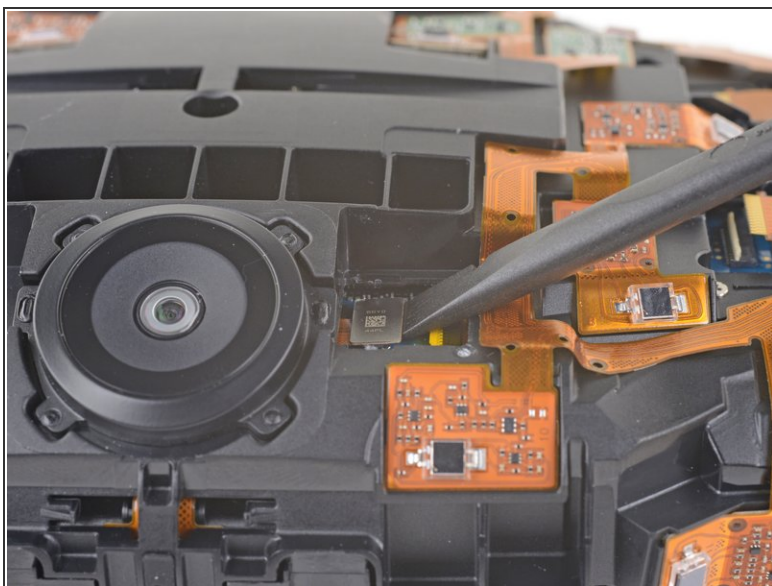
- Repeat the previous step for the remaining three sensor array cables to disconnect the remaining cables.

## Step 15



- Use tweezers or a spudger to pry up the camera cable cover and remove it.

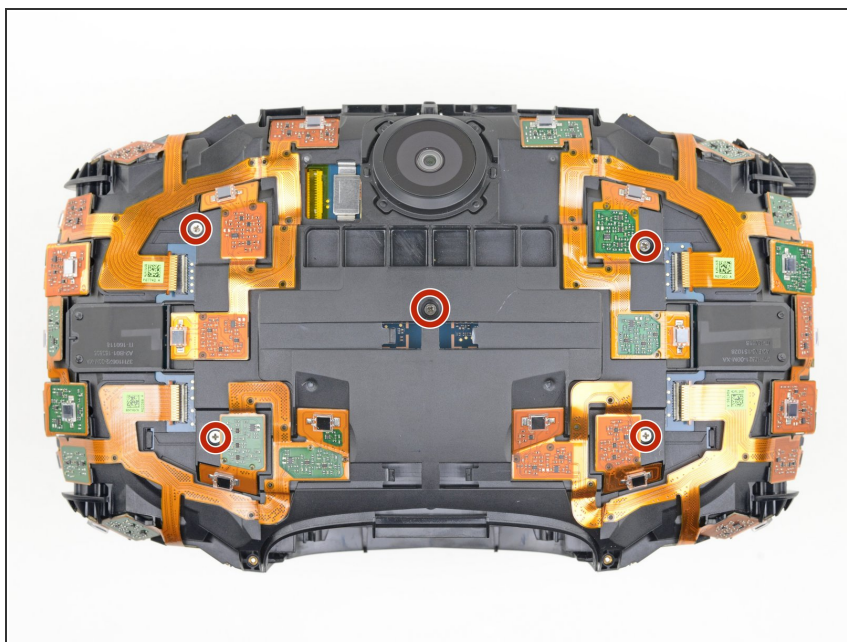
## Step 16



- Use the flat end of a spudger to pry the camera cable connector straight up from its socket on the motherboard.



## Step 17 — Unscrew the sensor array



- Use a PH000 driver to remove the five 3.9 mm screws securing the sensor array.

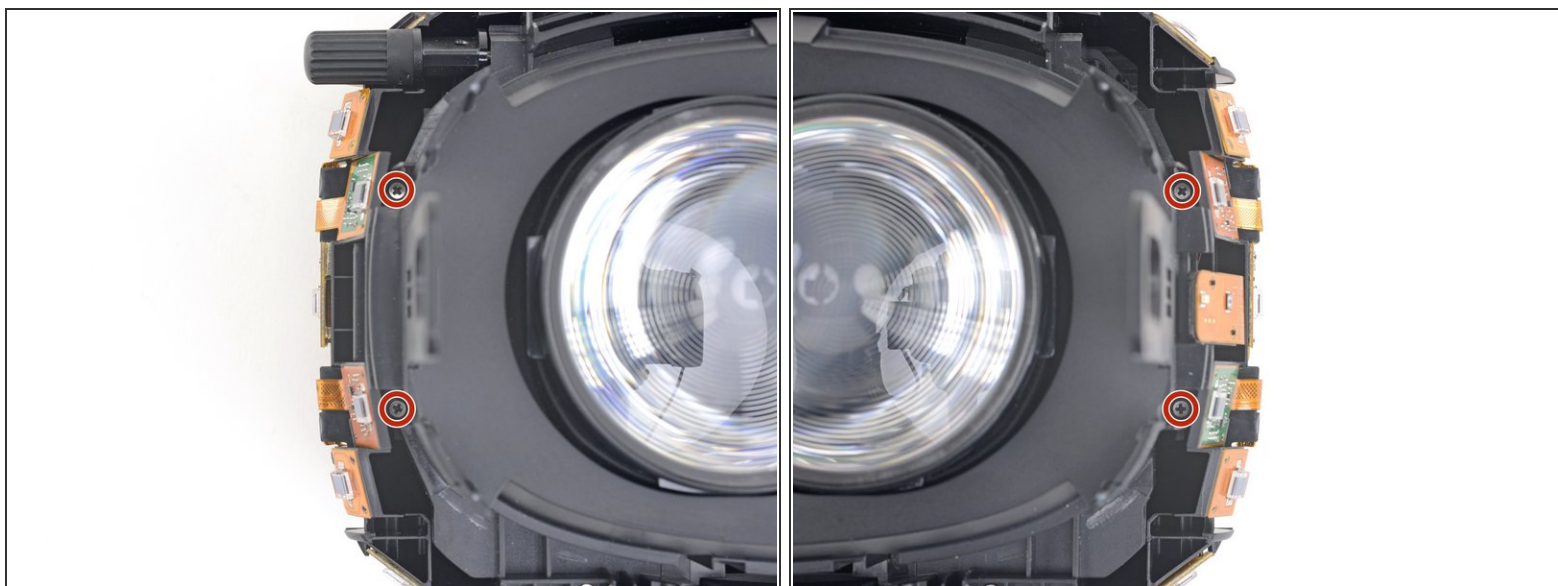
## Step 18



- Use a PH000 driver to remove the four 3.9 mm screws securing the sensor array.

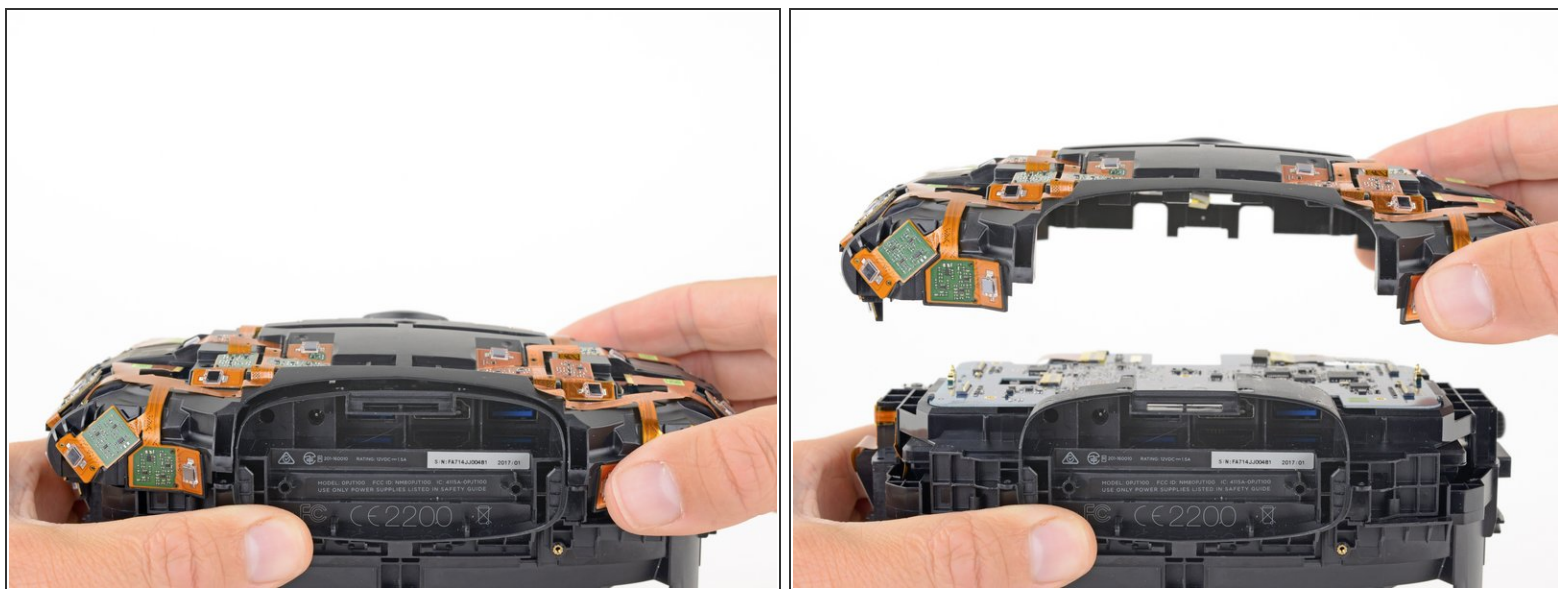


## Step 19



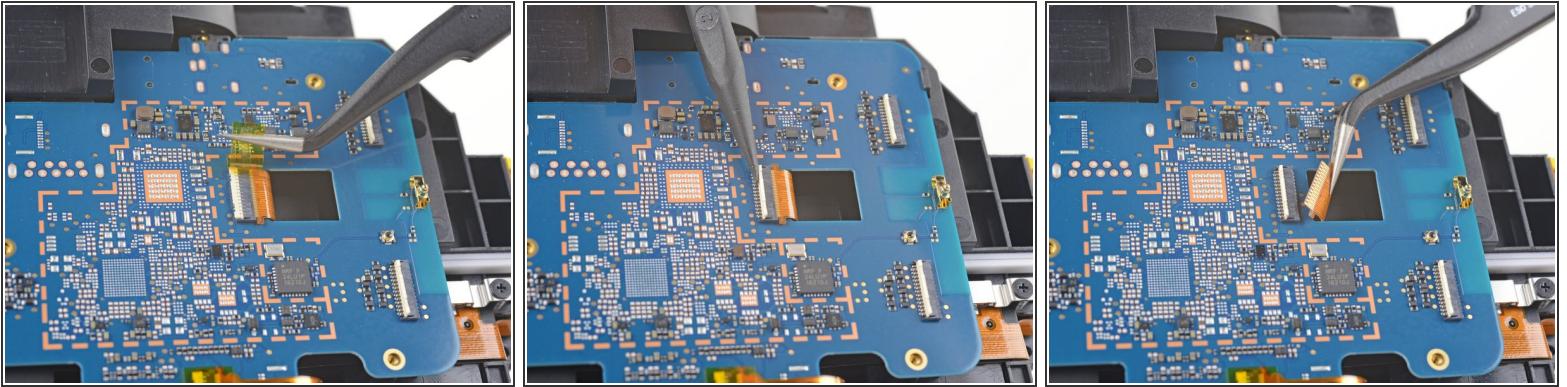
- Use a PH000 driver to remove the four 3.9 mm screws securing the sensor array.
- ⓘ You'll need a [narrow, long-shaft driver](#) to reach these screws.

## Step 20 — Remove the sensor array



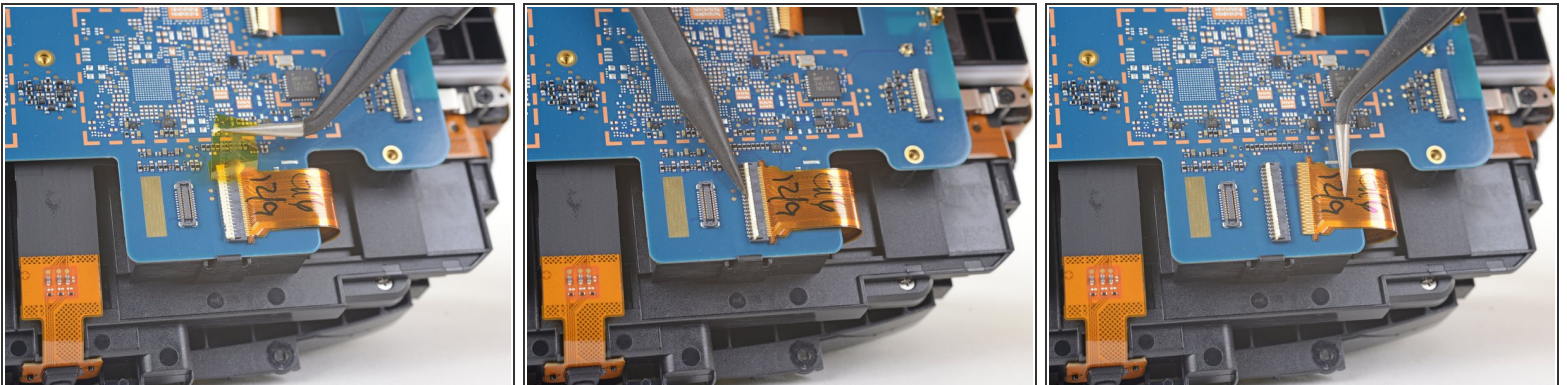
- Lift the sensor array away from the headset to remove it.

## Step 21 — Disconnect the motherboard



- Remove the tape covering the interconnect cable socket.
- Use the point of a spudger to flip up the small locking flap on the cable socket.
- Slide the interconnect cable straight out of its socket on the motherboard.

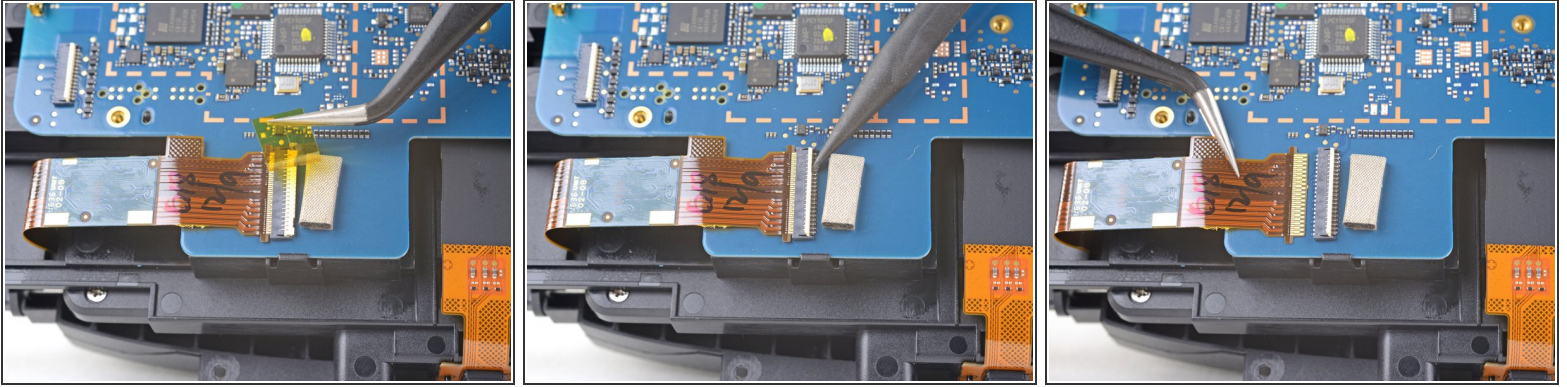
## Step 22



- Remove the tape covering the left OLED cable socket.
- Use the point of a spudger to flip up the small locking flap on the cable socket.
- Slide the left OLED cable straight out of its socket on the motherboard.

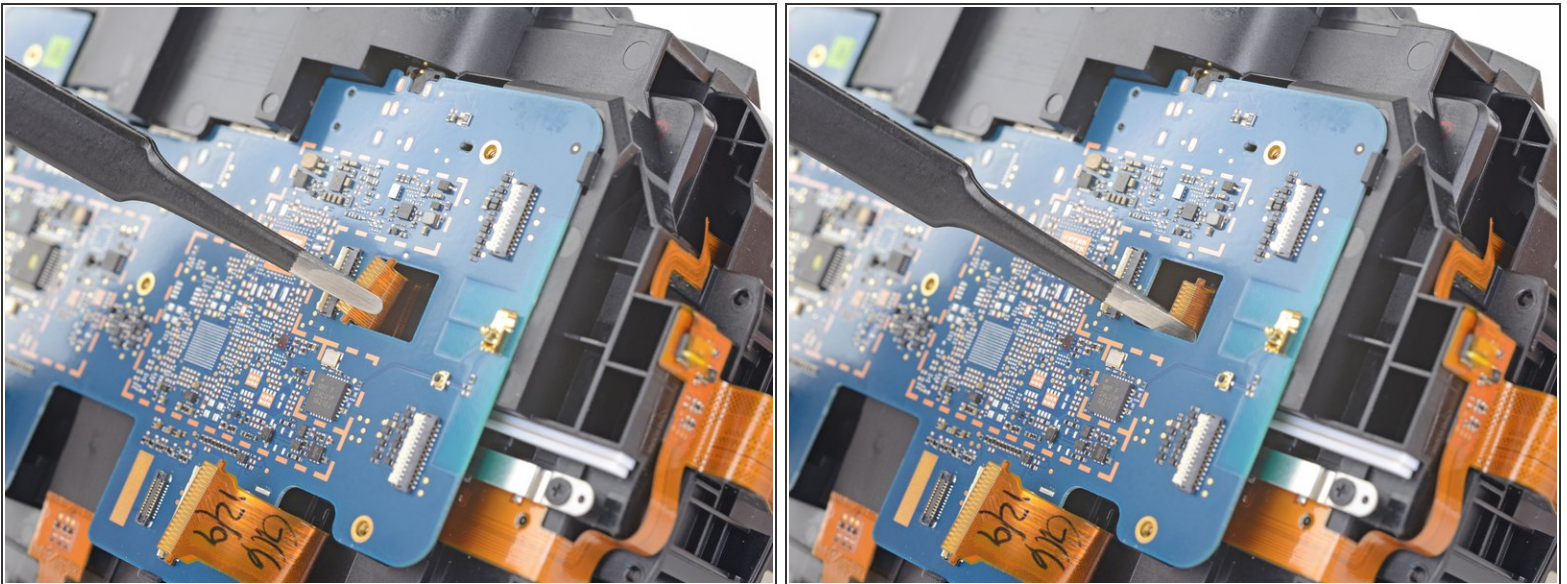


## Step 23



- Remove the tape covering the right OLED cable socket.
- Use the point of a spudger to flip up the small locking flap on the cable socket.
- Slide the right OLED cable straight out of its socket on the motherboard.

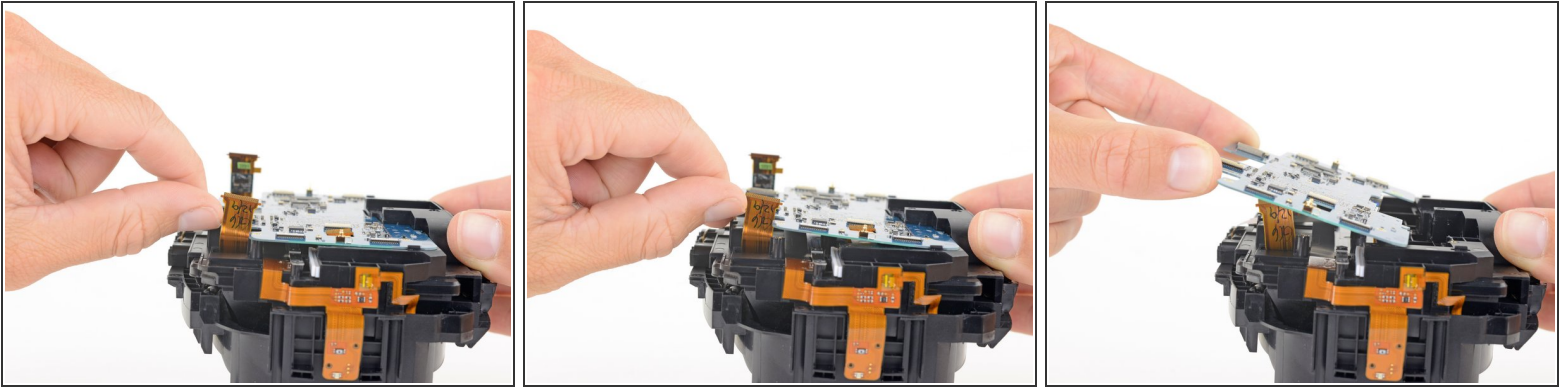
## Step 24



- Use a pair tweezers to slightly twist the interconnect cable and press it down until the tabs on either side of the cable clear the hole in the motherboard.
- ☒ During reassembly, make sure to thread the interconnect cable through its slot in the motherboard.



## Step 25 — Remove the motherboard



- Press the non-port-end of the motherboard toward the top of headset while hinging it away from the midframe to free it from the clips securing that end.
- Slide the motherboard toward the bottom of the headset, over the clips, to remove it.

 **Take care not to snag any cables during removal.**

Compare your new replacement part to the original part—you may need to transfer remaining components or remove adhesive backings from the new part before installing.

To reassemble your device, follow the above steps in reverse order.

Take your e-waste to an [R2 or e-Stewards certified recycler](#).

Repair didn't go as planned? Check out our [Answers community](#) for troubleshooting help.