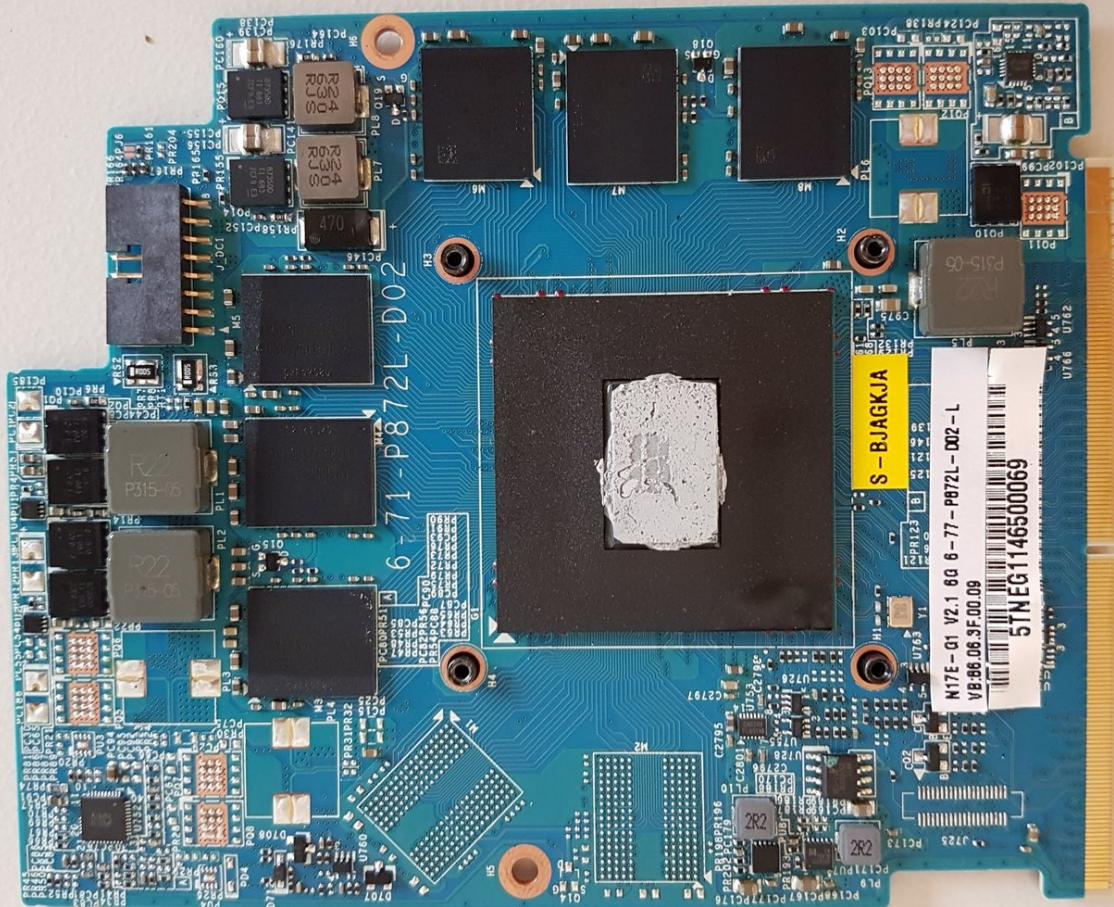




P775DM3 GPU replacement

Written By: Felice Suglia



TOOLS:

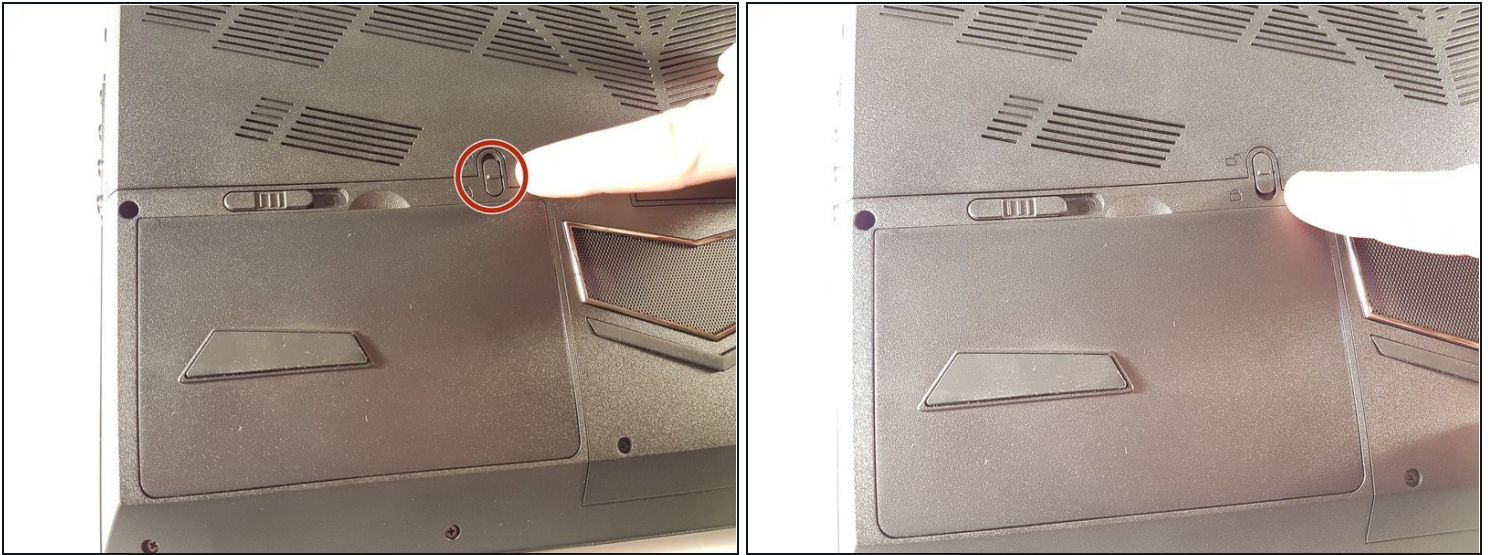
Phillips #0 Screwdriver (1)

PARTS:

Pièces pour why! P775DM3 CH (1)

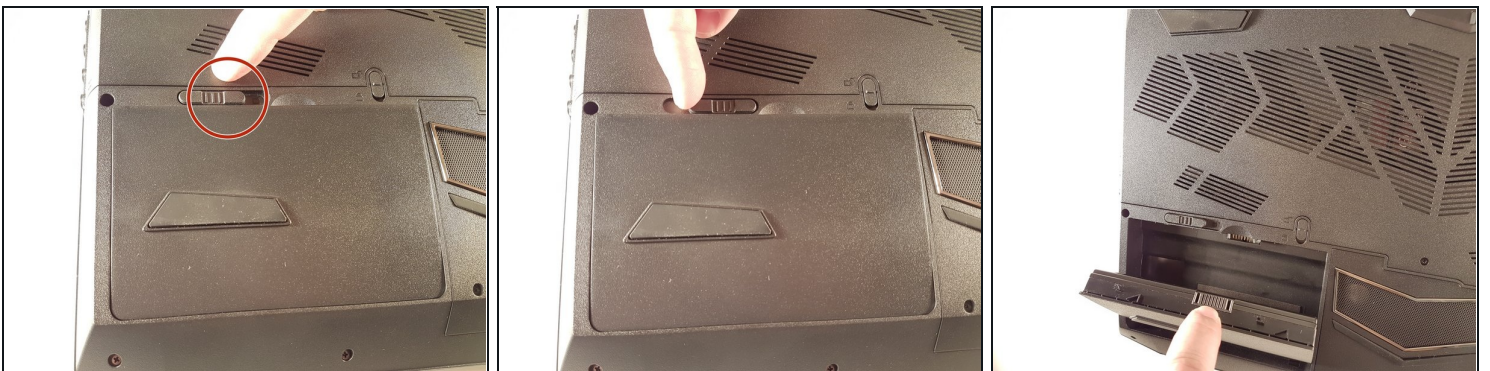
Pièces pour why! P775DM3 EU (1)

Step 1 — Battery



- Unlock the lock circled in red.

Step 2



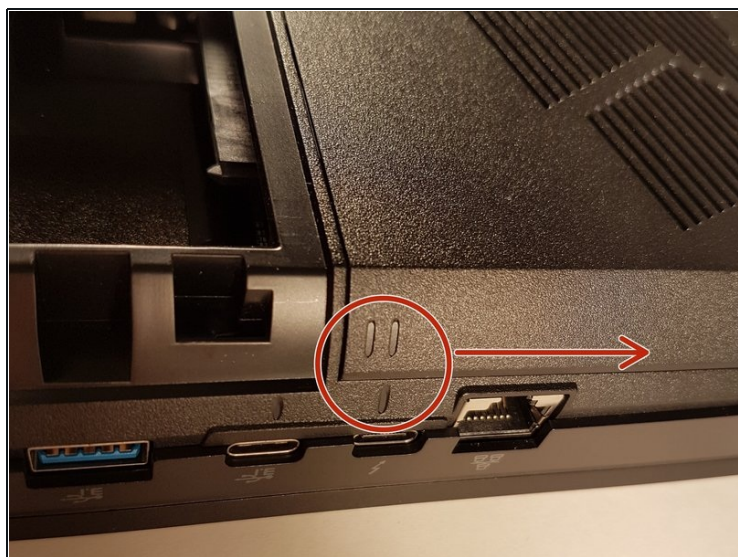
- Lift the battery while unlocking the lock circled in red.

Step 3 — Access to major components



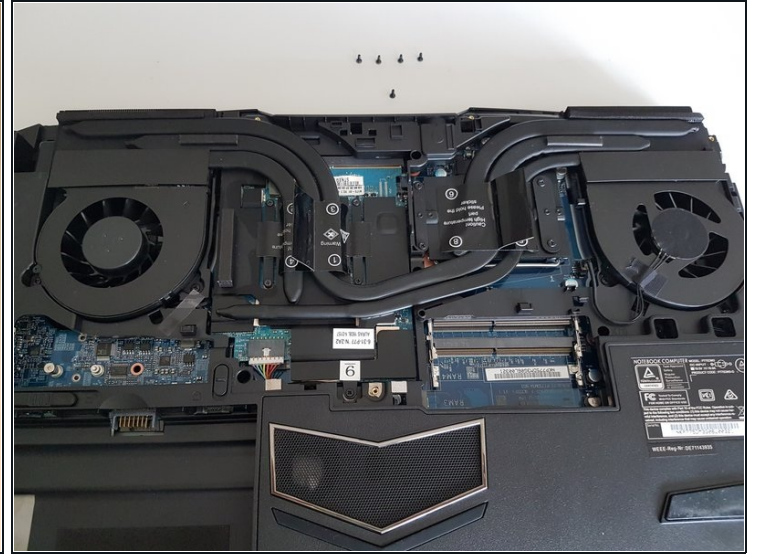
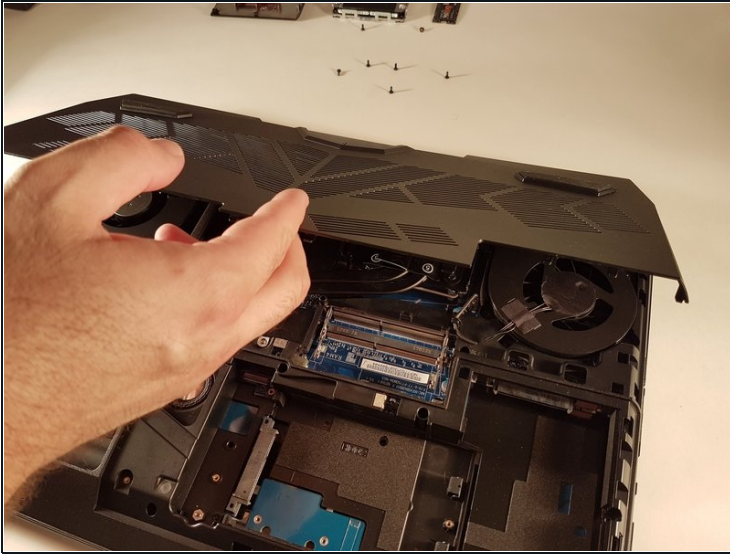
- Unscrew the five screws circled in red.

Step 4



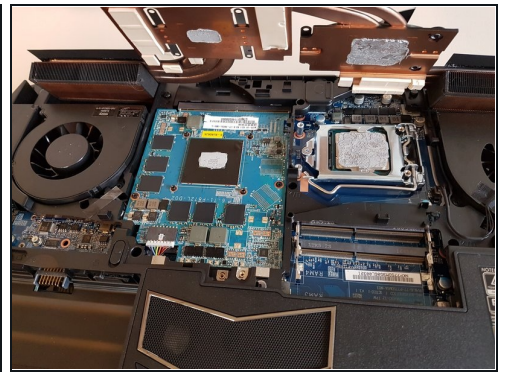
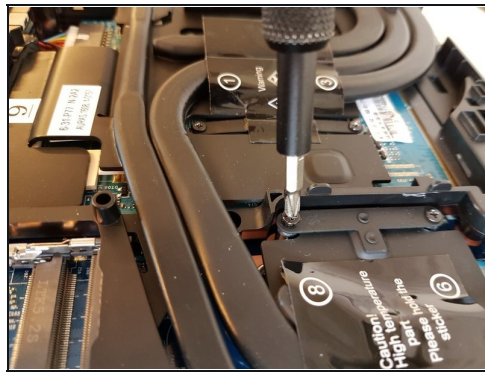
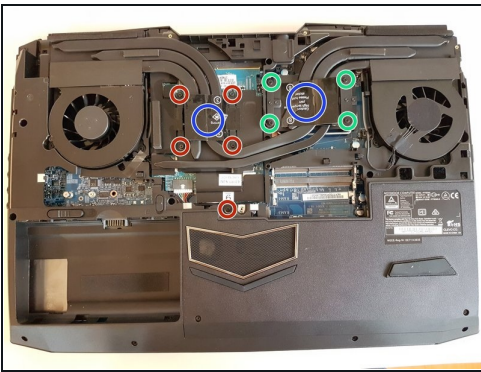
- Slide the plate in the direction of the red arrow.

Step 5



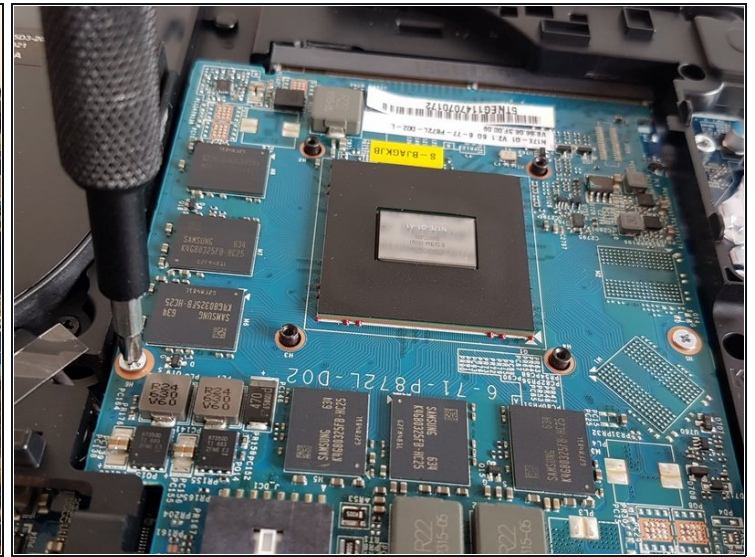
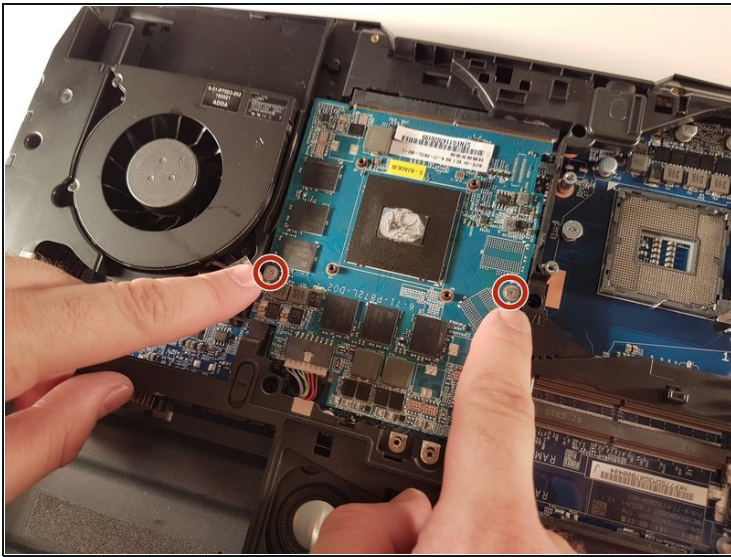
- Lift the plate.

Step 6 — Cooler



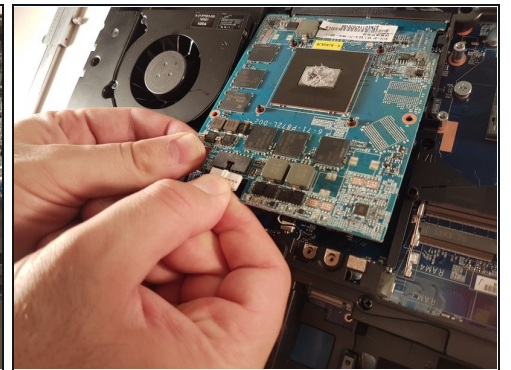
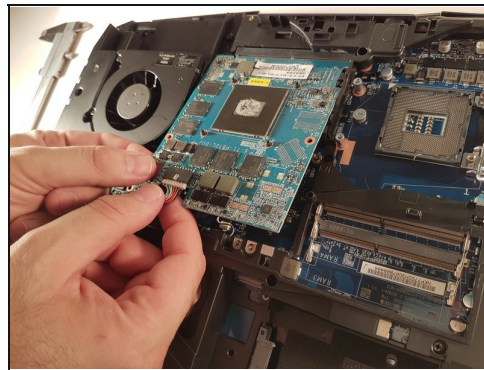
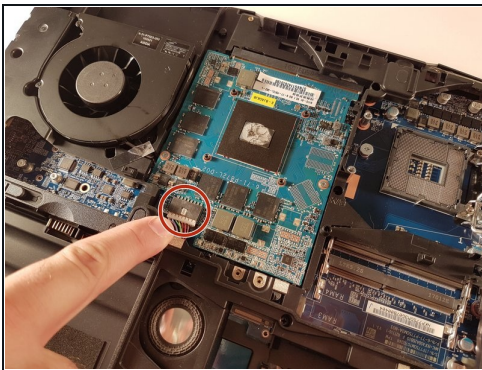
- Unscrew the four large screws circled in green
- Unscrew the five small screws circled in red
- Lift the cooler with the two tabs circled in blue

Step 7 — GPU



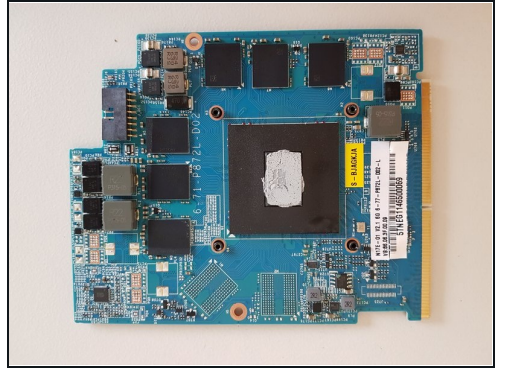
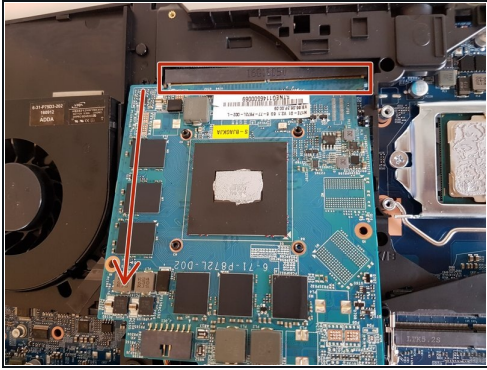
- Unscrew the two screws circled in red

Step 8



- Lift the card to allow access to the red circled connector
- Disconnect the red circled connector

Step 9



- Pull it in the direction of the red arrow

To reassemble your device follow the following instructions in reverse order