

# P775DM3 Replacement WLAN Card

Written By: Felice Suglia





## TOOLS:

Phillips #0 Screwdriver (1)

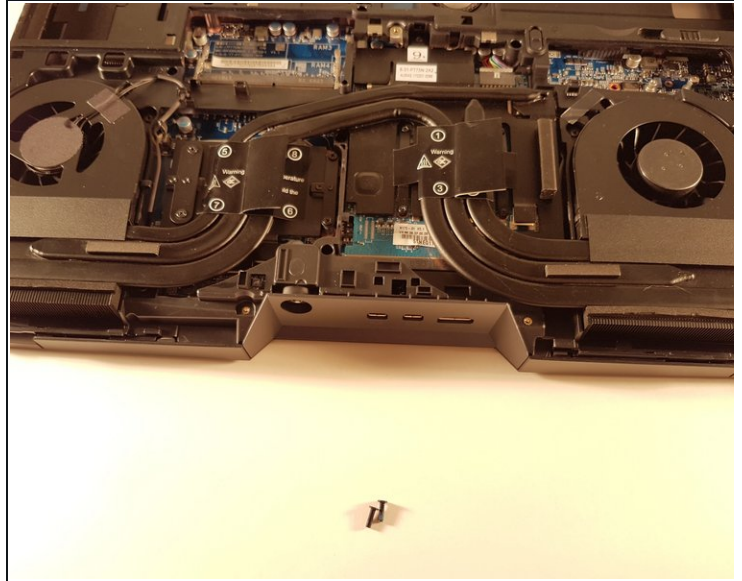
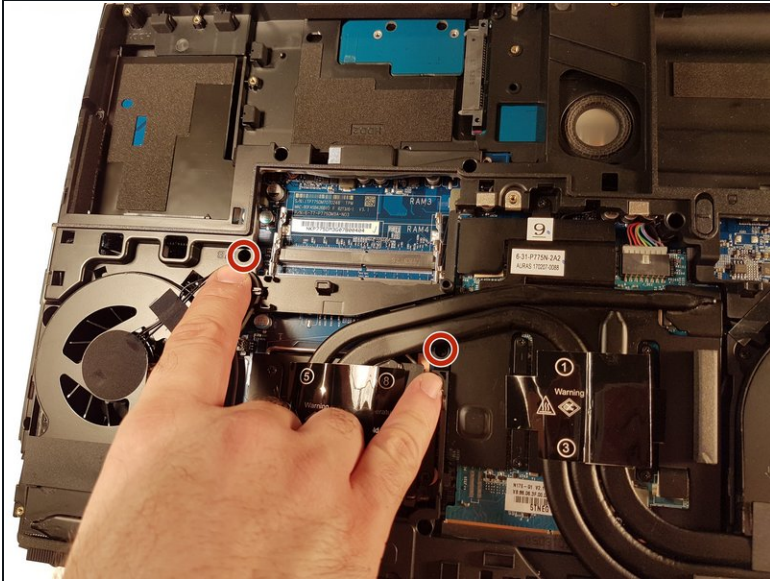
Tweezers (1)

## PARTS:

Pièces pour why! P775DM3 CH (1)

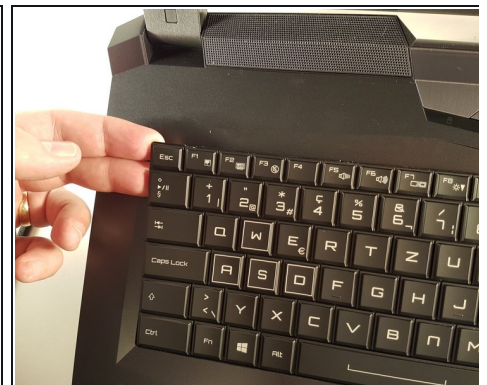
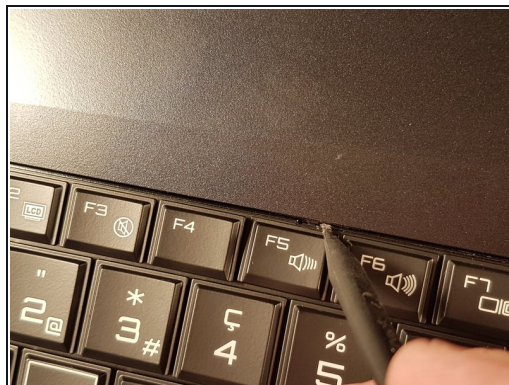
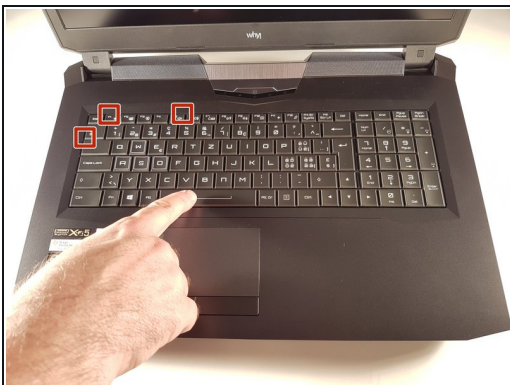
Pièces pour why! P775DM3 EU (1)

### Step 1 — Keyboard



- Unscrew the two screws circled in red

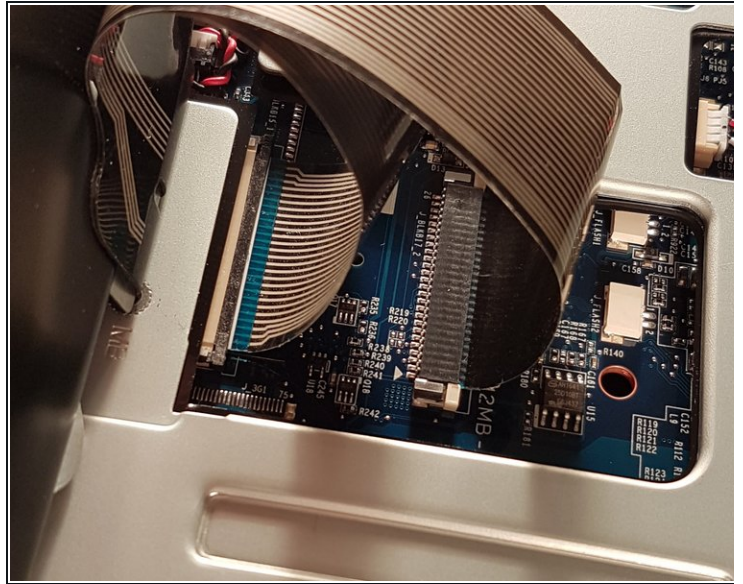
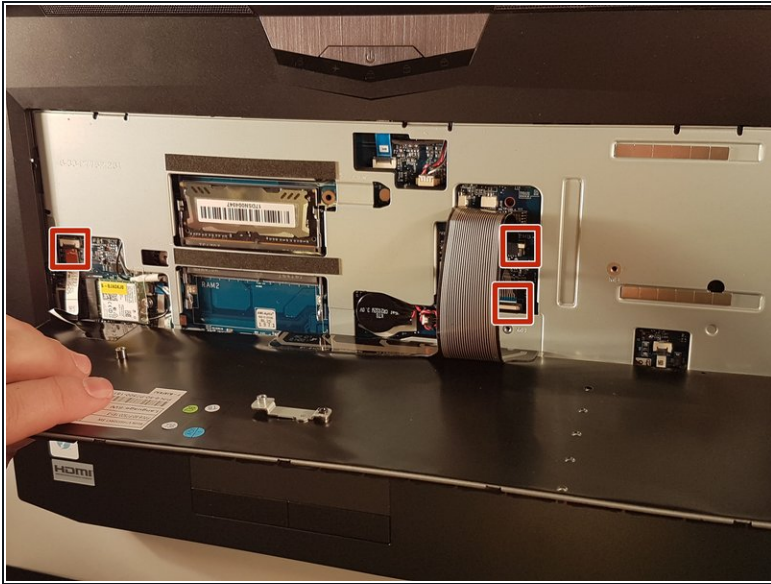
### Step 2



- Press a paper clip in the three places marked in red
- Lift the keyboard and feel free to put some strength

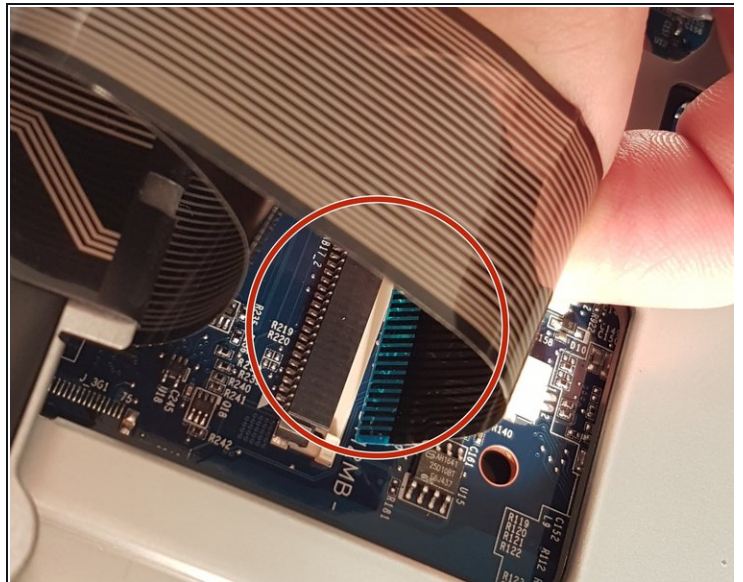
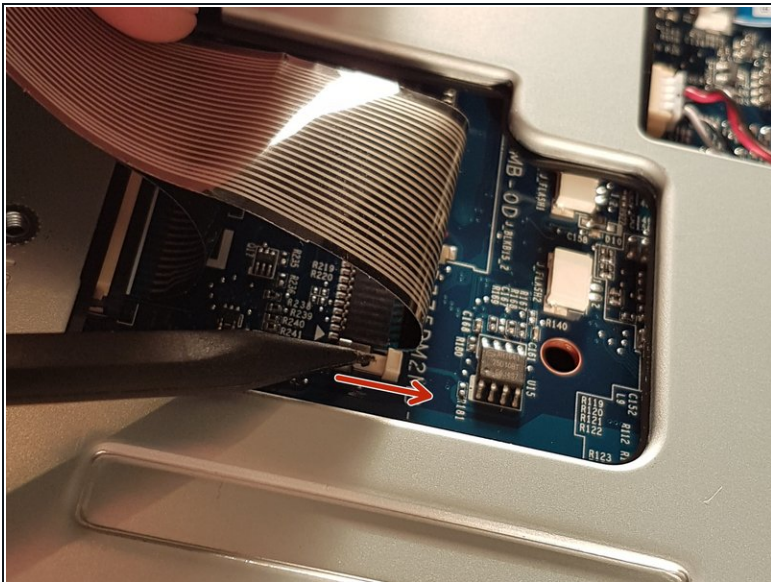


### Step 3



- Disconnect the three framed connectors in red

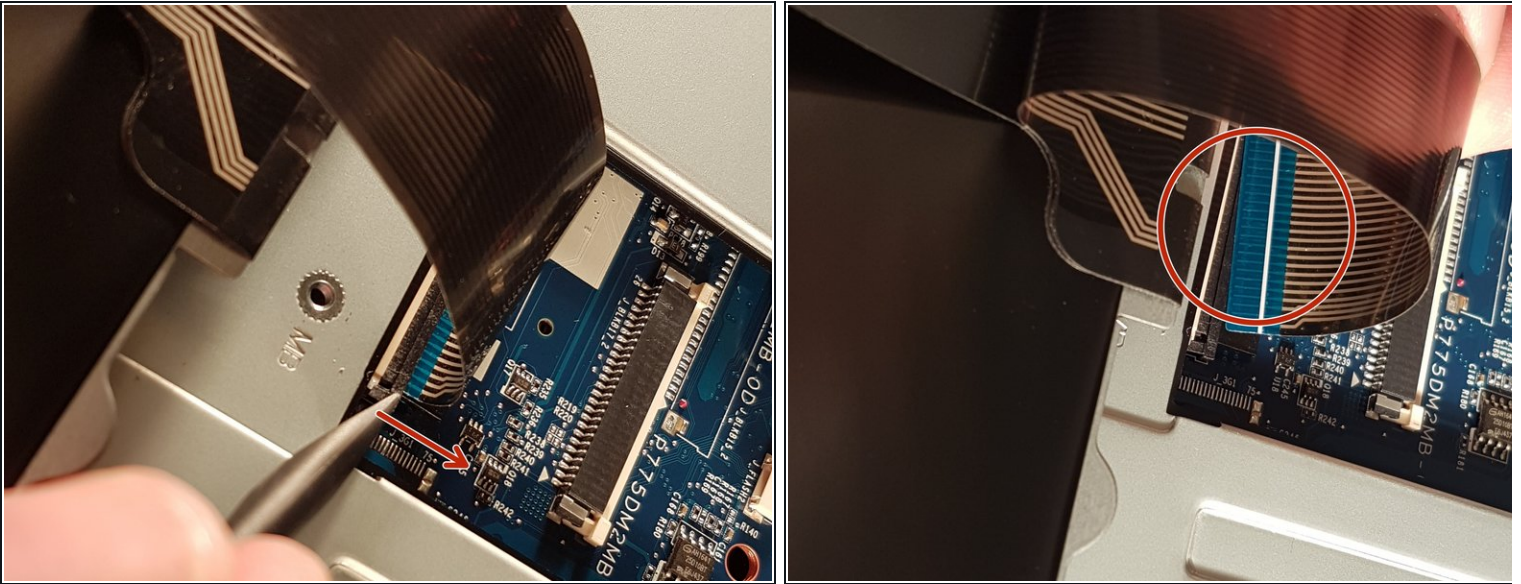
### Step 4



- Pull the white drawer in the direction of the arrow to unlock the connector
- Disconnect the red circled connector

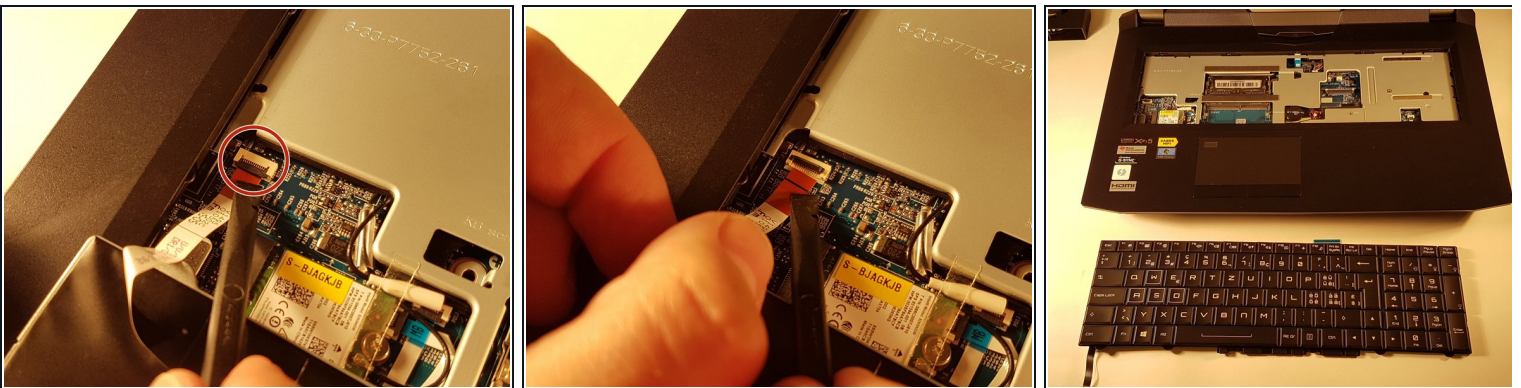


## Step 5



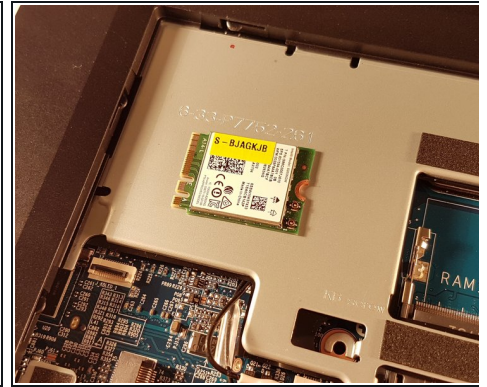
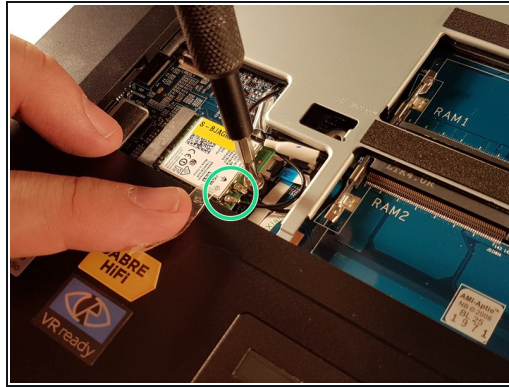
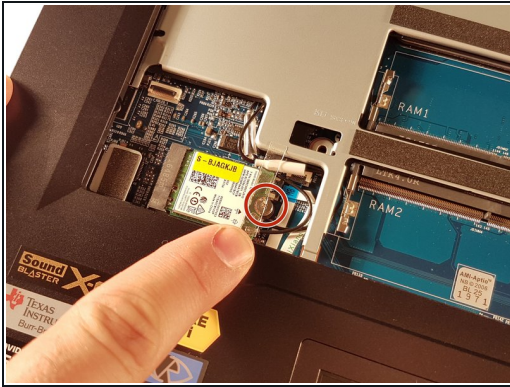
- Pull the black drawer in the direction of the arrow to unlock the connector
- Disconnect the red circled connector

## Step 6



- Lift the flap that holds the connector circled in red
- Disconnect the red circled connector
- Remove the keyboard

## Step 7 — WLAN card removal



- Unscrew the screw circled in red.
- Disconnect the two connectors circled in green.
- Remove the WLAN card.

To reassemble your device follow the following instructions in reverse order