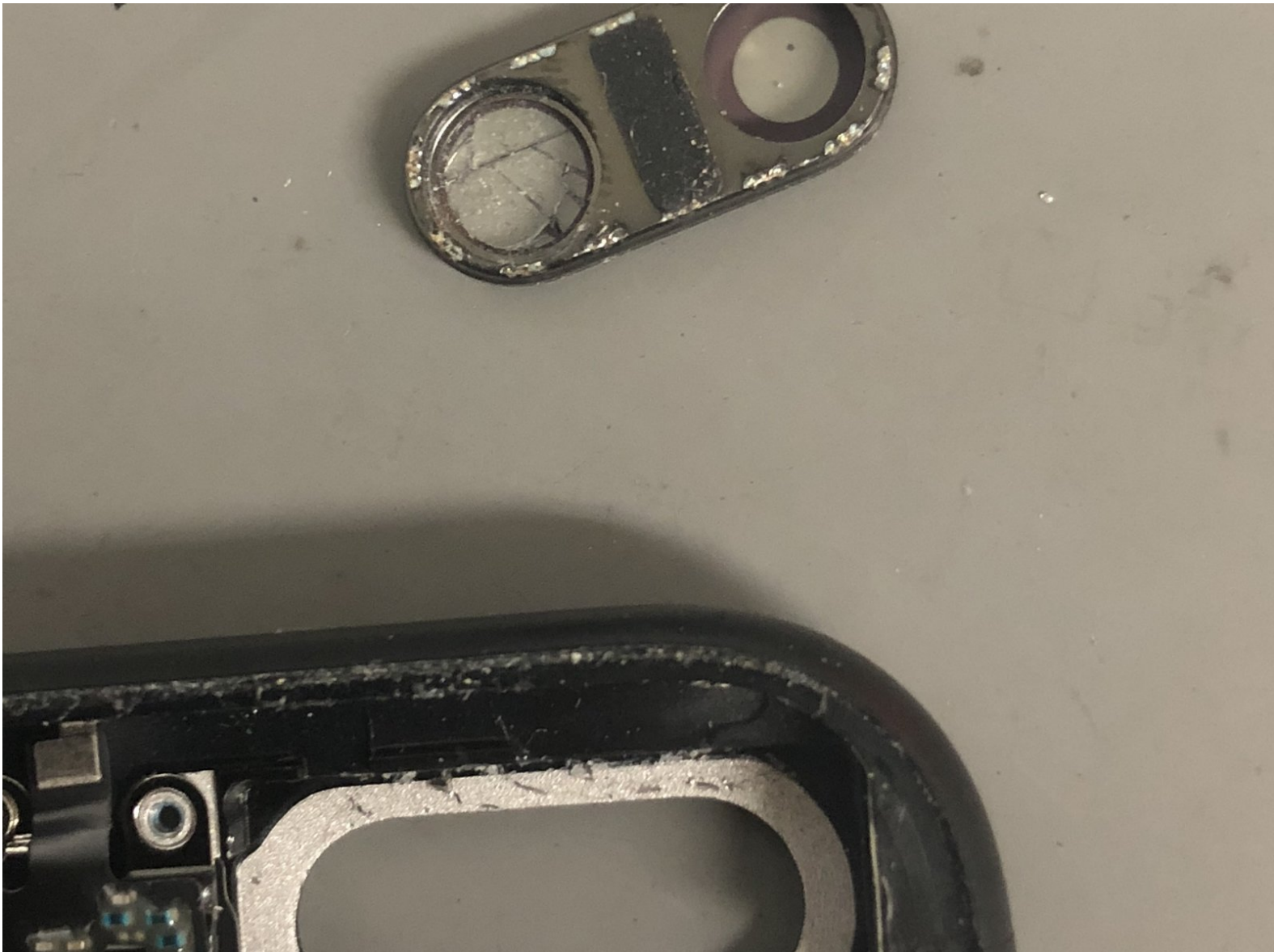




iPhone 7 Plus Rear Camera Lens Glass Replacement

In this guide, we will learn how to replace the...

Written By: nicolay.94



INTRODUCTION

In this guide, we will learn how to replace the camera lens on the iPhone 7 Plus.



TOOLS:

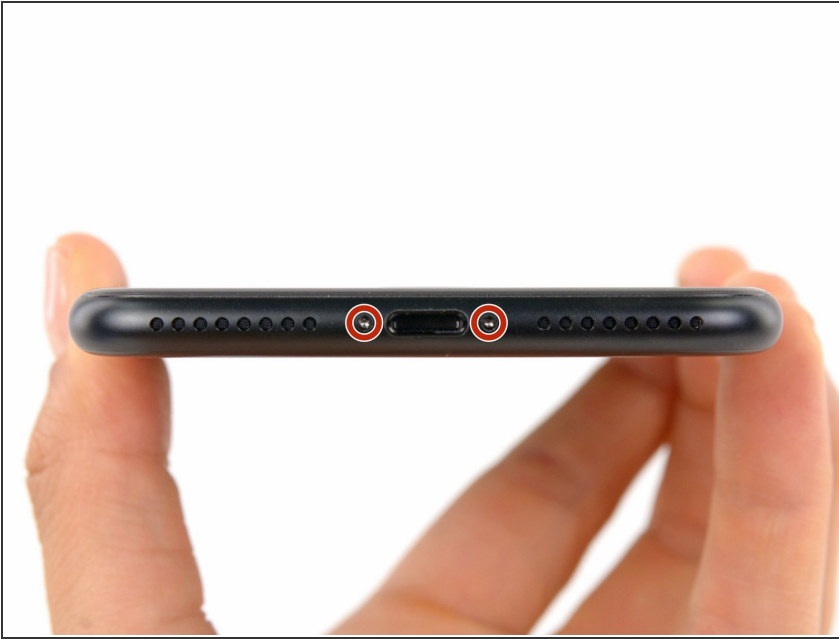
- [Spudger](#) (1)
- [Suction Handle](#) (1)
- [iFixit Opening Picks \(Set of 6\)](#) (1)
- [P2 Pentalobe Screwdriver iPhone](#) (1)
- [iOpener](#) (1)
- [Tweezers](#) (1)
- [Tri-point Y000 Screwdriver](#) (1)
- [Standoff Screwdriver for iPhones](#) (1)



PARTS:

- [iPhone 7 Plus Display Assembly Adhesive](#) (1)
- [iPhone 7 Plus Dual Rear Camera Lens Cover](#) (1)
- [iPhone 7 Plus Rear Camera Foam Pads](#) (1)
- [iPhone 7 Plus Rear Camera Alignment Bracket](#) (1)

Step 1 — Pentalobe Screws



- ⚠ Before you begin, discharge your iPhone battery below 25%. A charged lithium-ion battery can catch fire and/or explode if accidentally punctured.
- Power off your iPhone before beginning disassembly.
- Remove the two 3.4 mm pentalobe screws at the bottom edge of the iPhone.
- ⓘ Opening the iPhone's display will compromise its waterproof seals. Have [replacement seals](#) ready before you proceed past this step, or take care to avoid liquid exposure if you reassemble your iPhone without replacing the seals.

Step 2 — Opening Procedure



- ⓘ Heating the lower edge of the iPhone will help soften the adhesive securing the display, making it easier to open.
- Use a hairdryer or [prepare an iOpener](#) and apply it to the lower edge of the iPhone for about a minute in order to soften up the adhesive underneath.

Step 3



- Apply a suction cup to the lower half of the front panel, just above the home button.
 - ⓘ Be sure the suction cup does not overlap with the home button, as this will prevent a seal from forming between the suction cup and front glass.
 - ⓘ If your display is badly cracked, [covering it with a layer of clear packing tape](#) may allow the suction cup to adhere. Alternatively, very strong tape may be used instead of the suction cup. If all else fails, you can superglue the suction cup to the broken screen.

Step 4



- Pull up on the suction cup with firm, constant pressure to create a slight gap between the front panel and rear case.
- Insert the flat end of a spudger into the gap.
 - ⓘ The watertight adhesive holding the display in place is very strong; creating this initial gap takes a significant amount of force. If you're having a hard time opening a gap, rock the screen up and down to weaken the adhesive until you can fit a spudger inside.
- While pulling up on the suction cup, twist the spudger to widen the opening between the screen and rear case.

Step 5



- Insert the flat end of the spudger between the front panel and the rear case at the lower left edge of the iPhone.
- Slide the spudger up the left edge of the phone starting at the lower edge and moving towards the volume control buttons and silent switch, breaking up the adhesive holding the display in place.

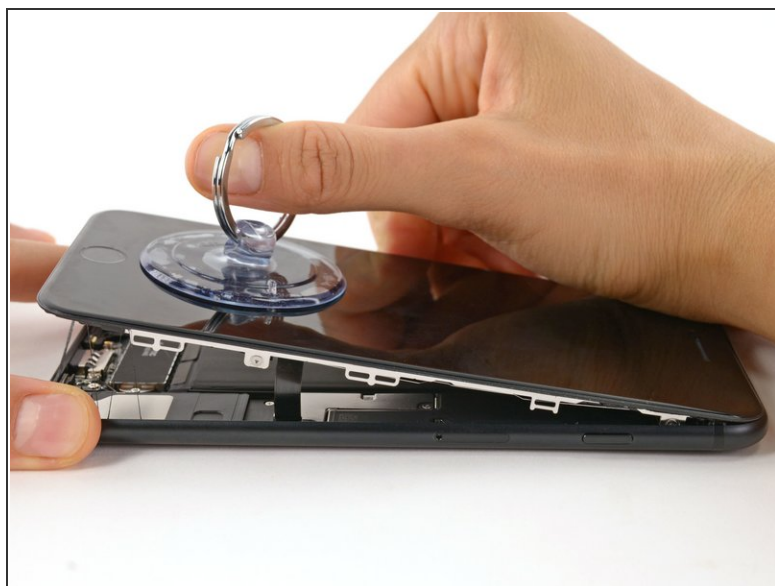
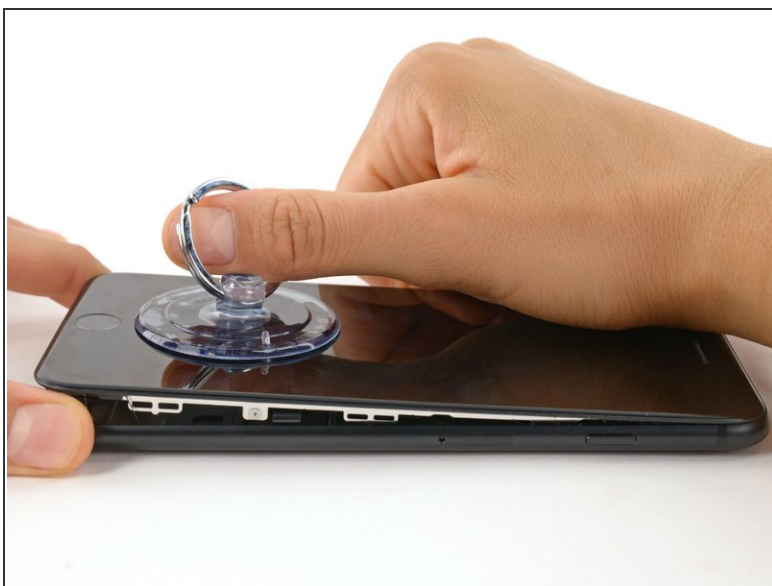
⚠ Do not try to pry the top edge of the display away from the rear case, as it is held in place by plastic clips that may break.

Step 6



- Remove the spudger from the left side of the phone and insert the flat end into the bottom right corner.
- Slide the spudger up the right edge of the phone to the top corner, breaking up the adhesive holding the display in place.

Step 7



- Pull up on the suction cup to lift up the display and open the iPhone.

⚠ Do not raise the display more than 10° as there are delicate ribbon cables along the right edge of the device connecting the display to the logic board.

Step 8



- Pull up on the small nub on the suction cup to remove it from the front panel.

Step 9



- Slide an opening pick underneath the display along the top edge of the phone to loosen the last of the adhesive.

Step 10



- Pull the display assembly slightly away from the top edge of the phone to disengage the clips holding it to the rear case.
- Open the iPhone by swinging the display up from the left side, like the back cover of a book.

⚠ Don't try to fully separate the display yet, as several fragile ribbon cables still connect it to the iPhone's logic board.

Step 11 — Battery Disconnection



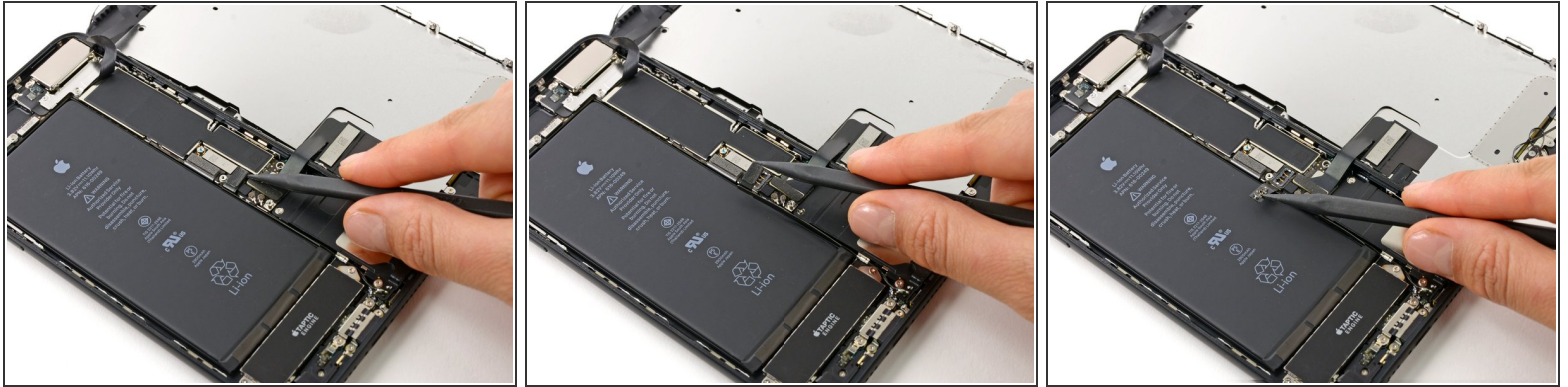
- Remove the following four tri-point Y000 screws securing the lower display cable bracket to the logic board:
 - Three 1.2 mm screws
 - One 2.6 mm screw

Step 12



- Remove the lower display cable bracket.

Step 13



- Use the point of a spudger to lift the battery connector out of its socket on the logic board.
- ⓘ Bend the connector cable up slightly to prevent it from making contact with the socket and providing power to the phone.

Step 14 — Display Assembly



⚠ Make sure the battery is disconnected before you disconnect or reconnect the cables in this step.

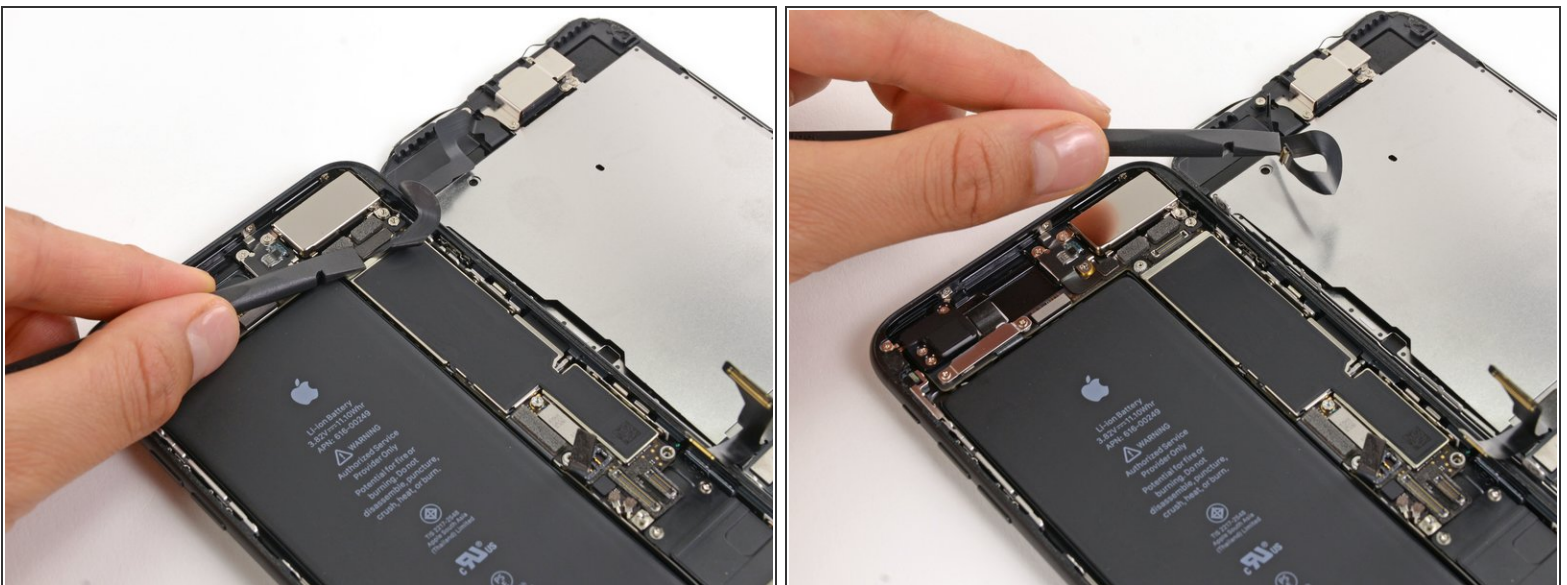
- Use the flat end of a spudger or a fingernail to disconnect the two lower display connectors by prying them straight up from their sockets on the logic board.
- ☑ To re-attach press connectors, press down on one end until it clicks into place, then repeat on the other end. Do not press down on the middle. If the connector is even slightly misaligned, the connector can bend, causing permanent damage.
- ☑ If you have a blank screen, white lines on the display, or partial or complete lack of touch response after reassembling your phone, try disconnecting and carefully reconnecting both of these cables and make sure they are fully seated.

Step 15



- Remove the three tri-point Y000 screws securing the bracket over the front panel sensor assembly connector:
 - One 1.3 mm screw
 - Two 1.0 mm screws
- Remove the bracket.

Step 16



- Disconnect the front panel sensor assembly connector from its socket on the logic board.
- ✦ This press connector should also be reconnected one end at a time to minimize the risk of bending.

Step 17



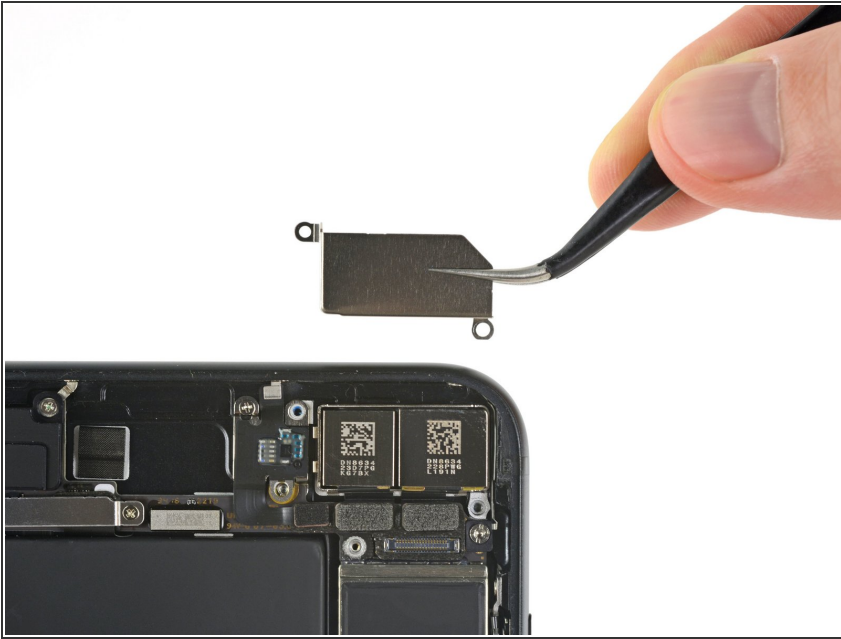
- Remove the display assembly.
- ★ During reassembly, pause here if you wish to [replace the adhesive around the edges of the display](#).

Step 18 — Rear-Facing Cameras



- Remove the two screws securing the rear-facing camera bracket:
 - One 1.6 mm Phillips screw
 - One 2.2 mm standoff screw
- ⓘ Standoff screws are best removed using a [standoff screwdriver](#) or bit.
- ⚠ In a pinch, a small flathead screwdriver will do the job—but use extra caution to ensure it doesn't slip and damage surrounding components.

Step 19



- Remove the bracket covering the rear-facing camera assembly.

Step 20



- Use an iFixit opening tool or a fingernail to disconnect the two camera cable connectors by prying them straight up from their sockets.

Step 21



- Use the flat end of a spudger to pry up the rear-facing camera assembly from the top edge of the iPhone.

Step 22



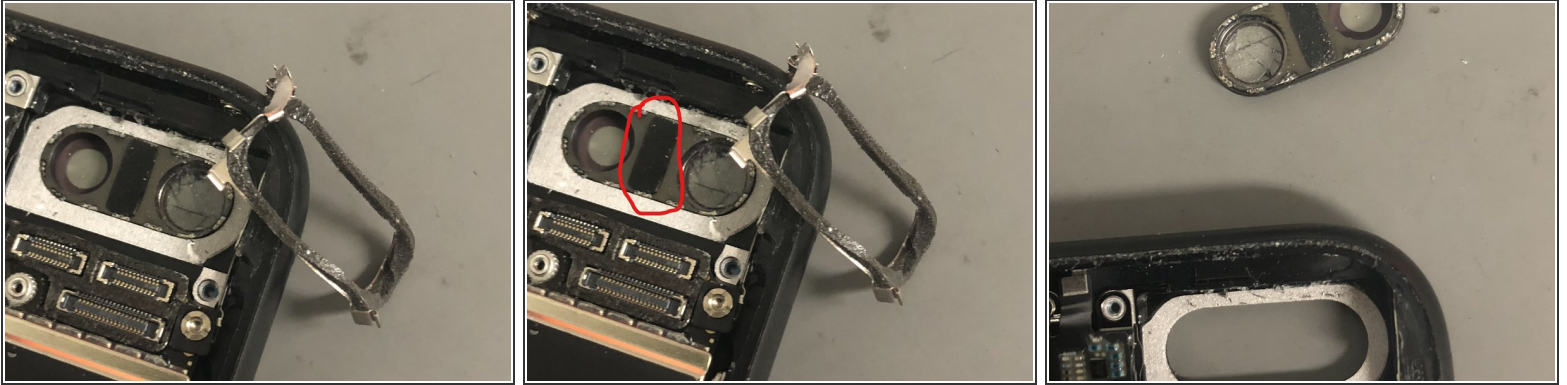
- Remove the rear-facing camera assembly.

Step 23 — Camera bottom bracket



- It's difficult to remove this bottom bracket. The inside round edge of this bracket seems to be soldered with camera lens ring; so you need much more effort and it's not surprising to break the bracket altogether.
- I like to take a flat screw driver and push it in where it wont damage any components and just pull until I hear small tears.
- Thats where the soldering have happened, you can also see it in picture three.



Step 24 — Final step



- The last step is to push the cracked camera lens out from inside.
- First, find a tool you prefer and easy to use with effort. Then, put your hands where your power will land to protect the rear case from bending. Next, push the camera lens with effort. Please be careful with the phone and your hand very much.
- When you place the new camera lens, you will need glue or adhesive to fasten the camera lens as well as the new bottom bracket.
 - You don't have to have a new bracket, its not necessary.
- If you worry about the iPhone 7 Plus being damaged, please send it to an Apple center.
- What I do here is that I put the phone firmly at the table with the camera sticking out, I place my flat screwdriver where the red marker is and I slightly tap the screwdriver with a hammer.

Step 25 — Inserting a new camera lens



-  To insert a new one you place it on the table and gently lay your phone above it pushing it back inside.
-  Make sure that the new camera lens is flush with the back and you are good to reverse the steps.

To reassemble your device, follow these instructions in reverse order.