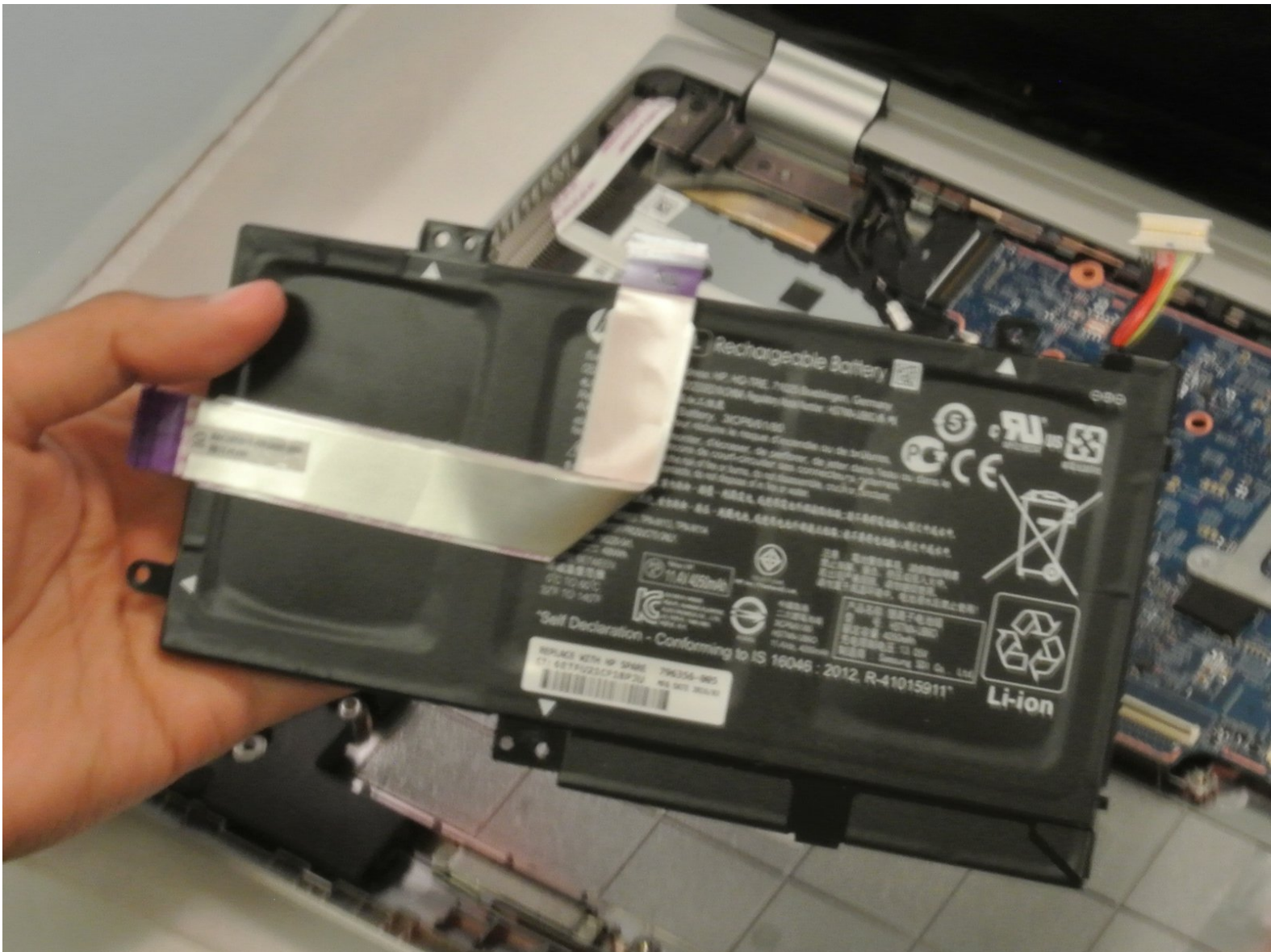




HP Pavilion 15-bk020wm Battery Replacement

This guide will walk you through the process of replacing a battery in the HP Pavilion 15-bk020wm.

Written By: Hannah Paine



INTRODUCTION

This guide will assist you to replace the battery for the HP Pavilion 15-bk020wm. Be sure you purchased the correct replacement battery before attempting to take the old one out. There is a prerequisite guide to open the bottom of the laptop for easier access. Be sure to power down your device before any disassembly.



TOOLS:

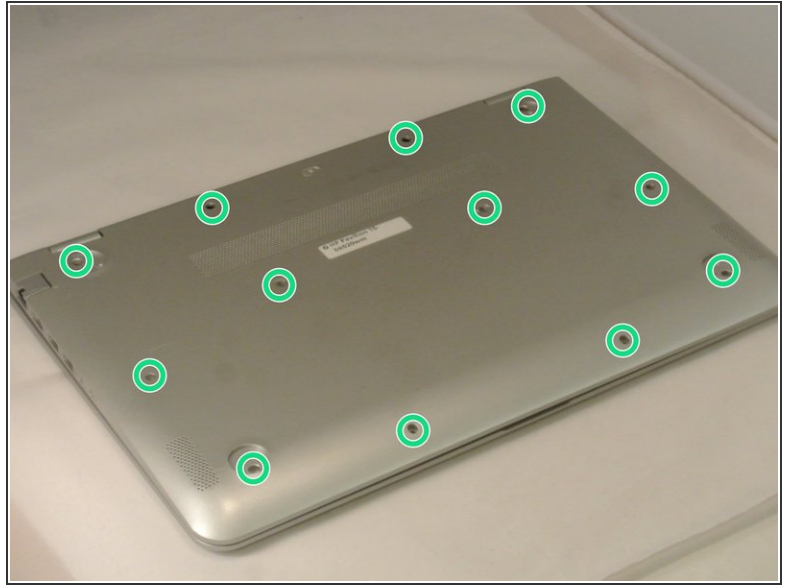
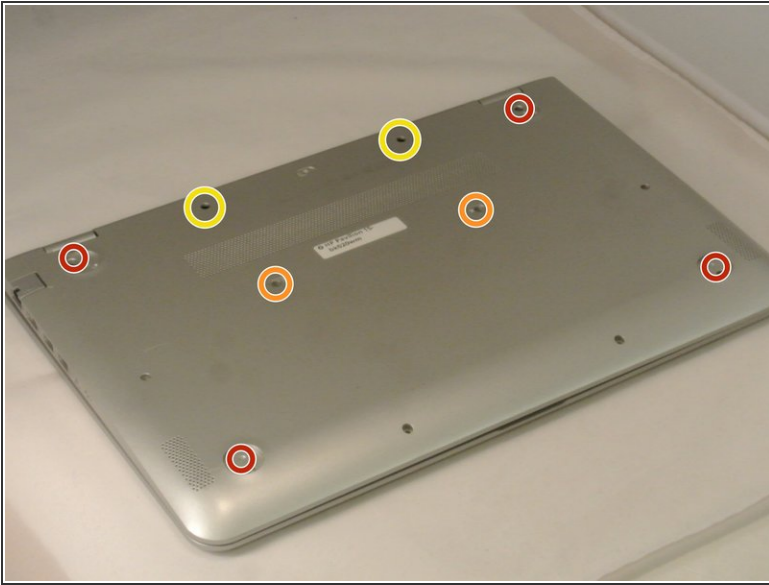
- [Phillips #00 Screwdriver](#) (1)
- [Spudger](#) (1)
- [iFixit Opening Tools](#) (1)



PARTS:

- [HP LEO3XL Replacement Battery](#) (1)

Step 1 — Keyboard Cover



 Before you begin, turn the laptop off and unplug it from the power source.

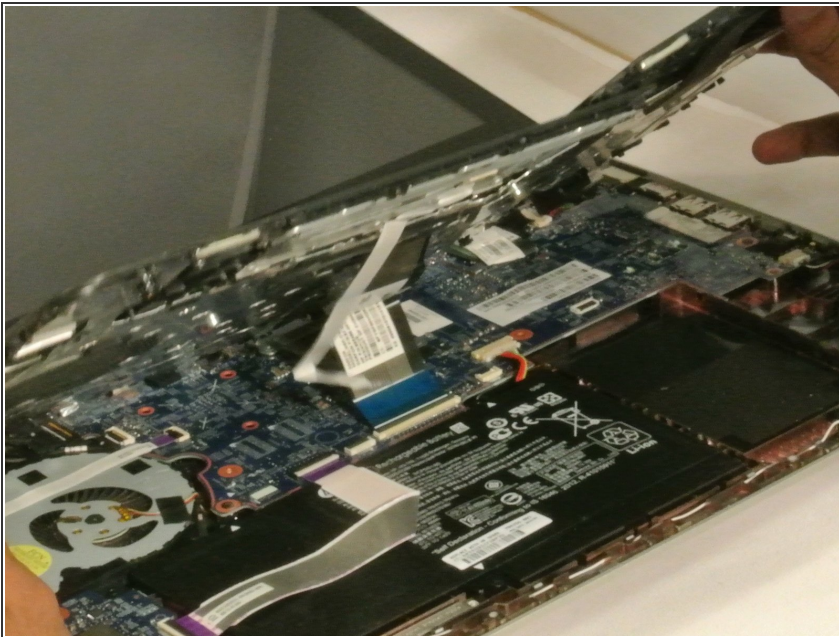
- Remove the 4 computer feet. (Our device didn't have these; they can be taken off with a plastic spudger.)
- Remove the two screw cover strips.
- Remove the two screw cover plugs.
- Unscrew all 12 screws (size: Phillips M2.5×7.0) from the bottom of the computer.

Step 2




- Turn the computer over to the front.
- Open the laptop.
- Use a plastic pry tool to pry up the keyboard cover near the hinge on both the right and left side, and work your way towards the touchpad.

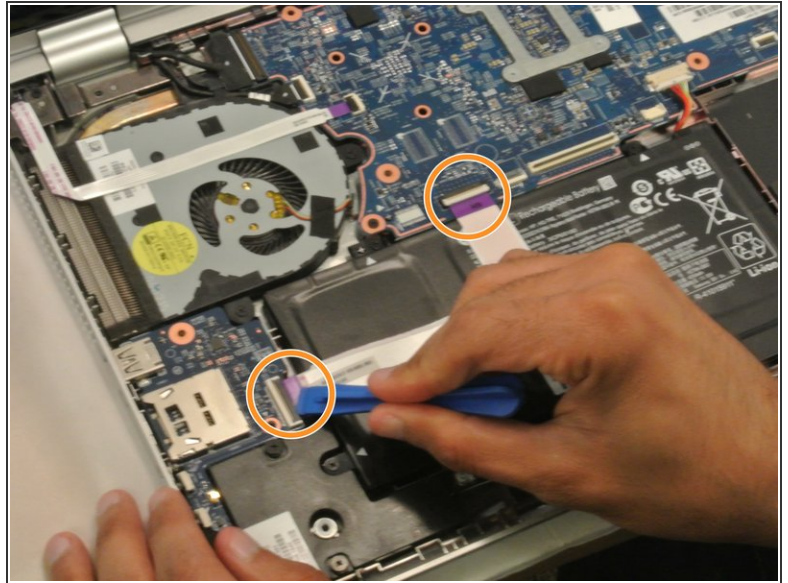
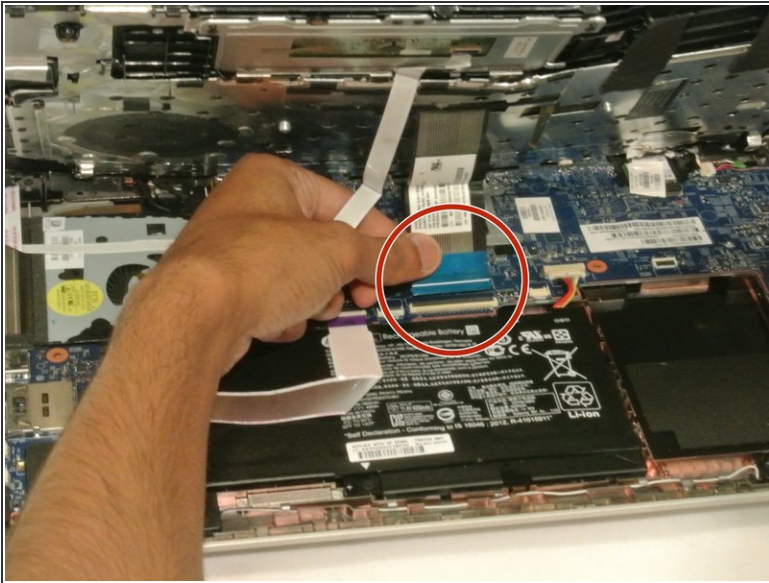
Step 3



- Tilt the keyboard cover up slightly.

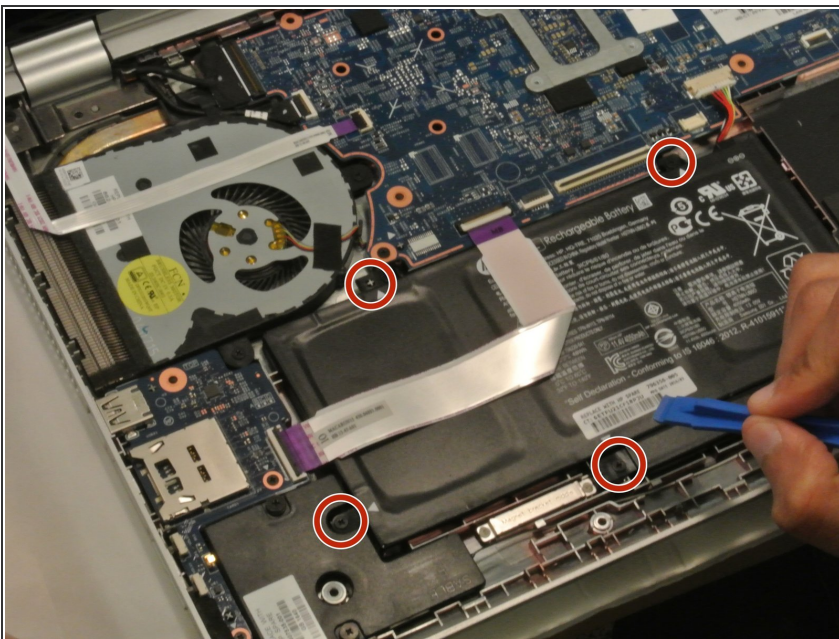
 Do not fully remove the keyboard, as it is still attached to the laptop by some cables.

Step 4 — Battery



- Detach the blue [ZIF cable](#) from the bottom of the laptop.
- Use a plastic opening tool to flip up the two ZIF cables connecting the battery to the motherboard.

Step 5



- Remove the four Phillips M2.5x4.4 screws using the Phillips 00 located along the perimeter of the battery.

Step 6



- Lift the damaged battery from the laptop.
- Insert the new battery.

To reassemble your device, follow these instructions in reverse order.

Take your e-waste to an [R2 or e-Stewards certified recycler](#).