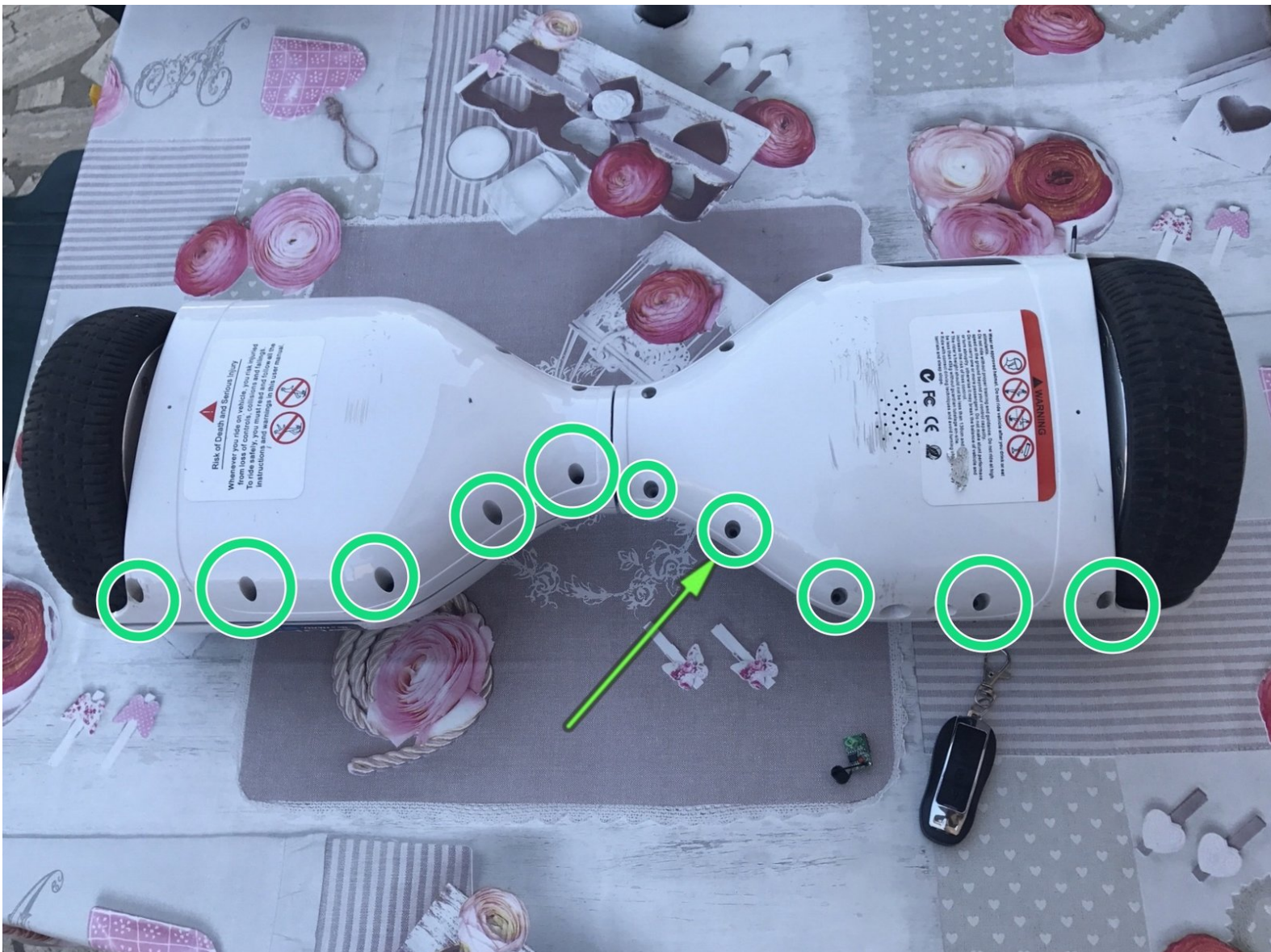




Hoverboard Bluetooth Remote Control Replacement

Use this guide to replace the Bluetooth remote...

Written By: Smilzo



INTRODUCTION

Use this guide to replace the Bluetooth remote control of a Hoverboard.

Be careful! A soldering iron is used in this guide, so take the necessary precautions before starting



TOOLS:

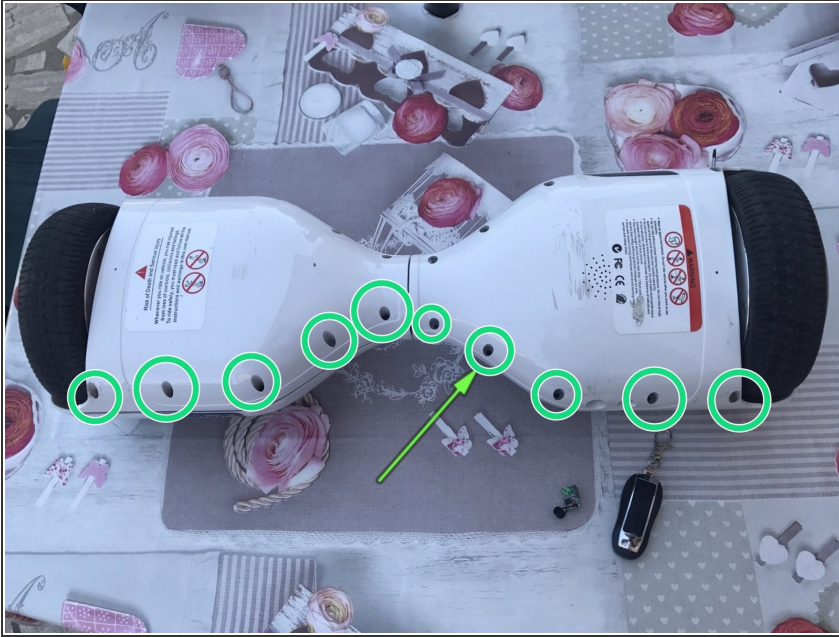
- [Cacciavite con testa a croce n. 1](#) (1)
- [New Item](#) (1)



PARTS:

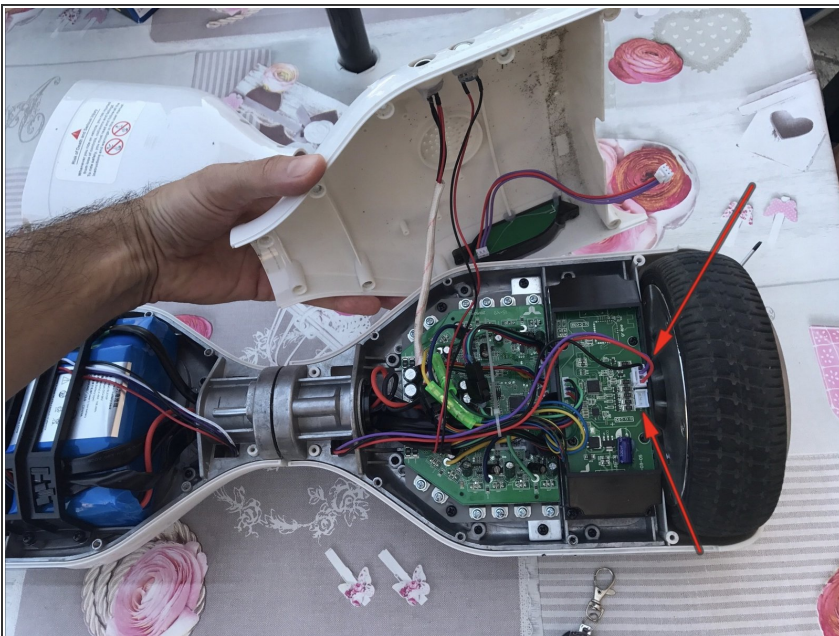
- [New Item](#) (1)

Step 1 — Bluetooth Remote Control



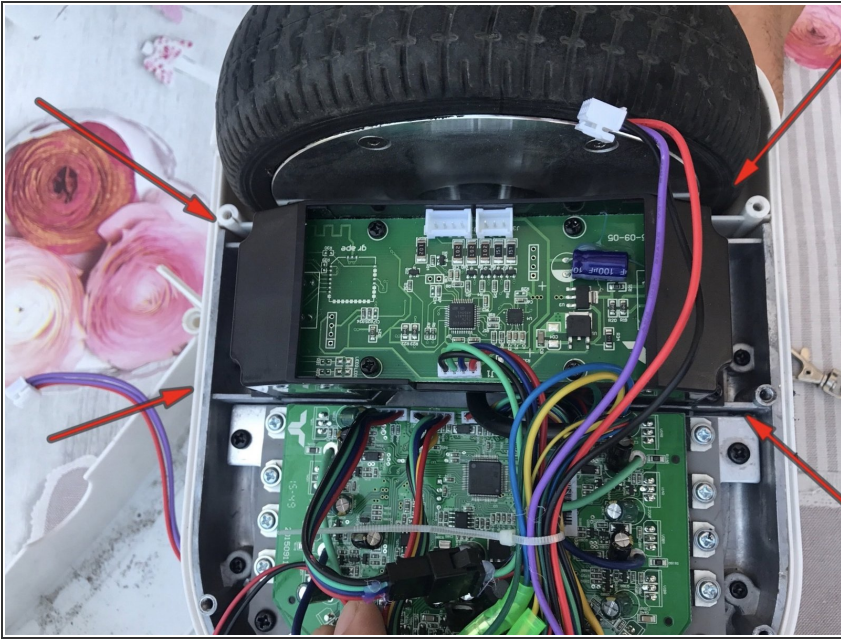
- Remove the 10 screws with a Phillips screwdriver to access the inside of the hoverboard.
- The electronic circuit boards are mirrored on both sides, so examine them both to determine which has the Bluetooth setup.

Step 2



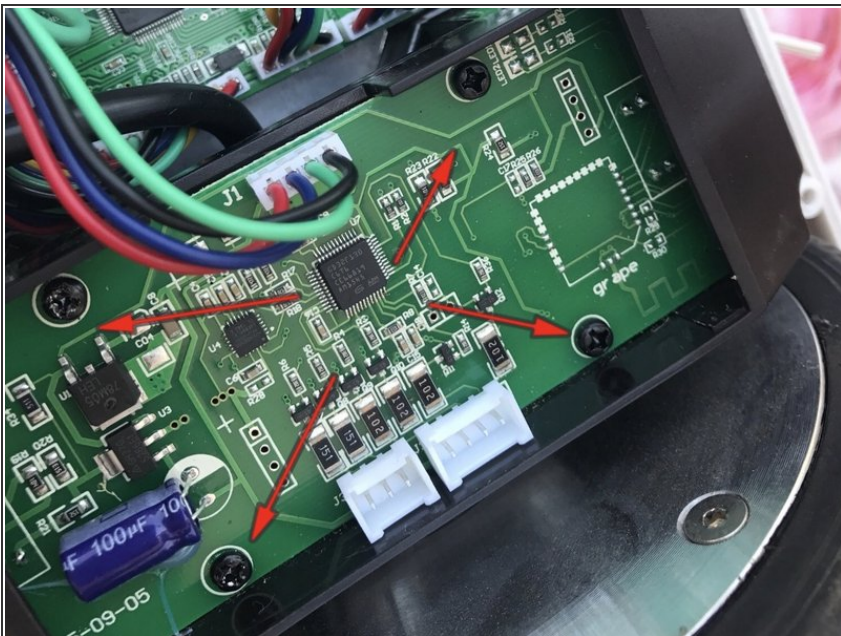
- Unhook the lighting and indicator light wires to remove the cover.

Step 3



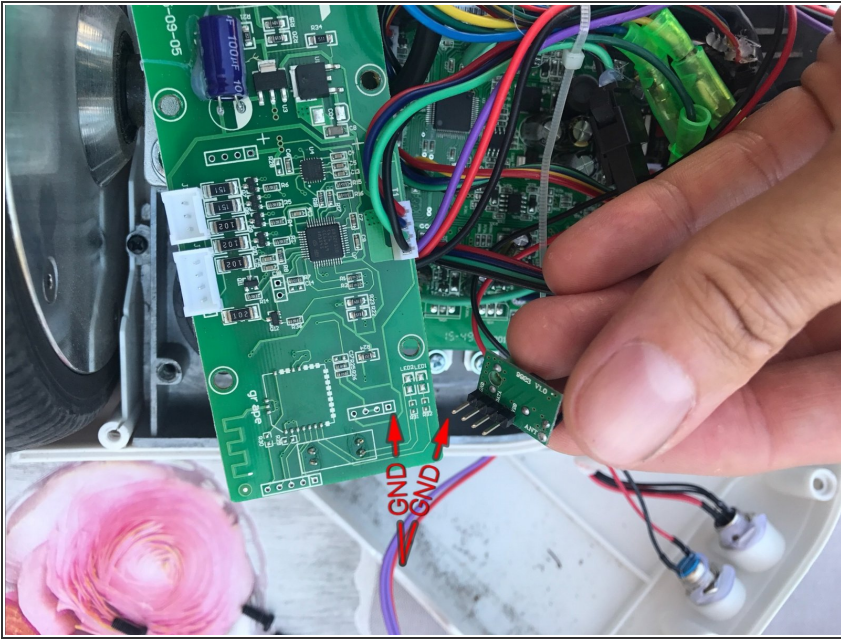
- Remove the 4 screws that hold the circuit board support.

Step 4



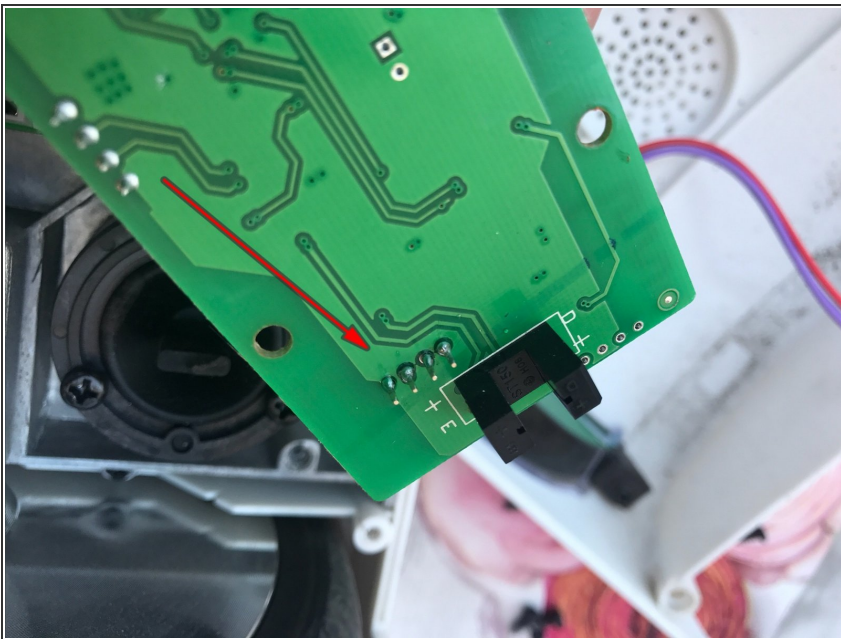
- Remove the 4 screws that secure the board to the support.

Step 5



⚠ Remember the sequence of wires to be soldered on the Bluetooth board.

Step 6



- Use a soldering iron to affix the 4 pins of the Bluetooth board onto the hoverboard board
- ☑ Before soldering the boards, check the functionality of the Bluetooth board by merely inserting the pins, which is enough.

To reassemble your device, Follow these instructions in reverse order.