



Sanyo VPC-S1415 LCD Replacement

Inexpensive acquired camera that has a broken...

Written By: oldturkey03



INTRODUCTION

Inexpensive acquired camera that has a broken LCD. This is a relative easy and straight forward task.

TOOLS:

[Phillips #00 Screwdriver](#) (1)
[iFixit Opening Tool](#) (1)

PARTS:

[replacement LCD screen](#) (1)

Step 1 — LCD



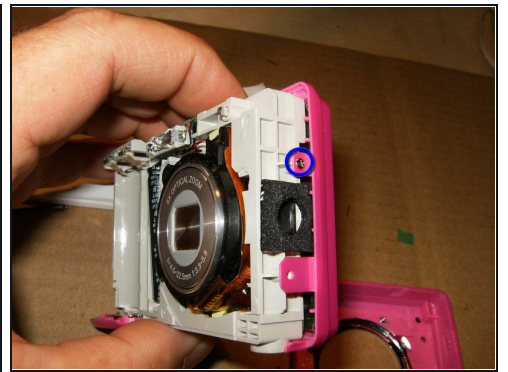
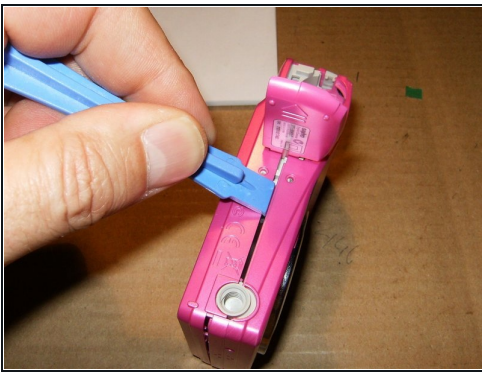
- Here is a recently acquired camera. Initial cost \$3.00
- Only trouble is, obviously broken LCD
- Remove the carrying strip. Use a needle and some [tweezers](#) to loosen the slip knot.

Step 2



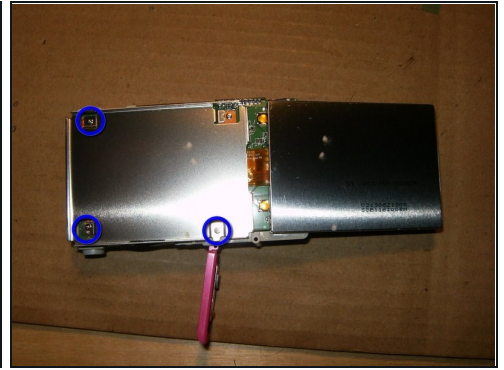
- Remove one screw on the right of the camera
- Remove one screw on the left side of the camera
- Remove the two screws on the bottom

Step 3



- Split the camera from the battery compartment down. You can use an opening tools, or just your fingernails, if so equipped.
- This will remove the front part of the case.
- Remove this screw on the right side of the camera. Keep it separate from the 4 screws previously removed. They are of different length

Step 4

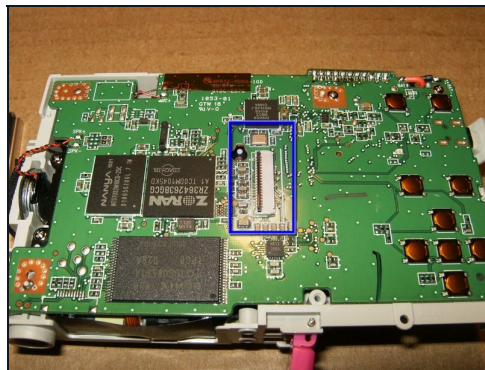
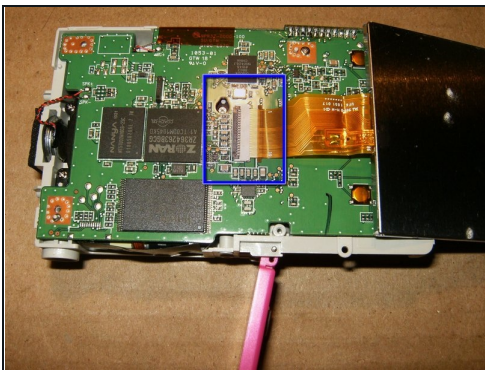


- Remove the screw on the bottom of the battery compartment. Keep this screw with the one removed on the previous step. These two screws have a different length than all the other screws. They are the shortest ones in the camera
- With those two screws removed, you can not separate the back part of the case.

⚠ Flip the LCD to the right and out of the frame. Do NOT try to remove it yet.

- Remove the screw screws that hold the LCD frame to the logic board. Keep the 3 screws separated from the rest of the screws, due to different length.

Step 5



- With the frame removed, the connector and LCD cable are now fully accessible. Note the to tabs on the cable and their position on the logic board.
- Flip the tab on the connector carefully up and remove the LCD.
- Hopefully this is what you will get after replacing the LCD and reassembling the camera in reverse order. Total replacement cost was \$15 and 30 minutes of my time.

To reassemble your device, follow these instructions in reverse order.