



Golf Club Shaft and Club Head Replacement

How to replace the steel shaft in a golf club and replace a grip.

Written By: Aaron Beck



INTRODUCTION

Steps to replace an old golf club shaft with a new steel shaft and replace an old grip with a new one.

By following these steps to repair or construct your clubs, you will have a set of clubs that are tailor-made for you. This process can save you hundreds of dollars in the long run.



TOOLS:

- [Propane Torch](#) (1)
- [Wire Brush](#) (1)
- [Sand Paper](#) (1)
- [JB Weld Epoxy](#) (1)
- [Razor Blade](#) (1)
- [Golf Grip Tape](#) (1)
- [Golf Club Grip Solvent](#) (1)



PARTS:

- [Golf Club Grip](#) (1)
- [Golf Club head](#) (1)
- [golf club shaft](#) (1)

Step 1 — Golf Club Steel Shaft and Grip



- Using propane or a torch, heat the hosel of the club to remove the steel shaft from the club head. The heat will break the epoxy bond that holds the head to the shaft.

⚠ Head and shaft will be hot.

Step 2



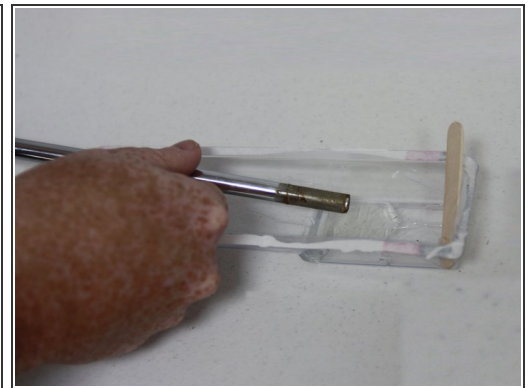
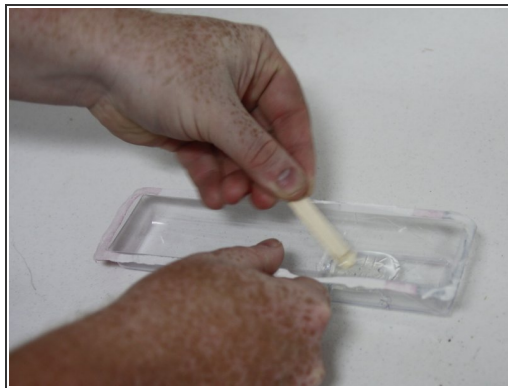
- Use a wire brush to clean out the remains of the old epoxy from the club head.

Step 3



- Use a piece of sand paper or a grinder to roughen the tip of the shaft where it connects to the hosel of the club head.

Step 4



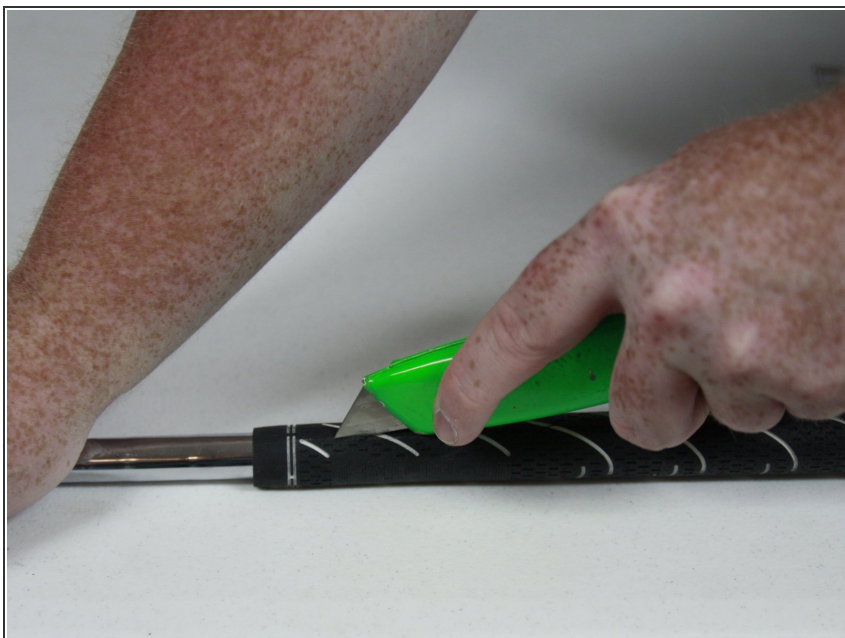
- Pour epoxy into a container and stir to mix it together. Once epoxy is mixed together, spin the shaft tip into the epoxy to prepare for insertion into the head.

Step 5



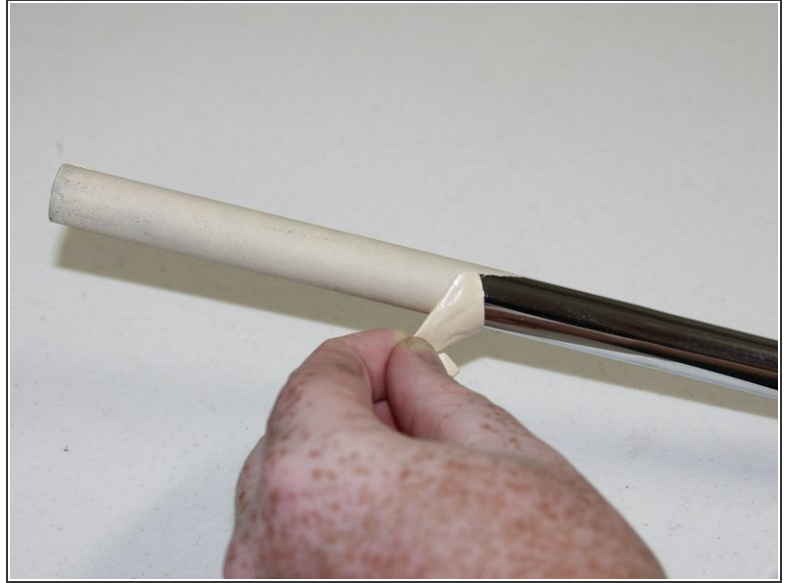
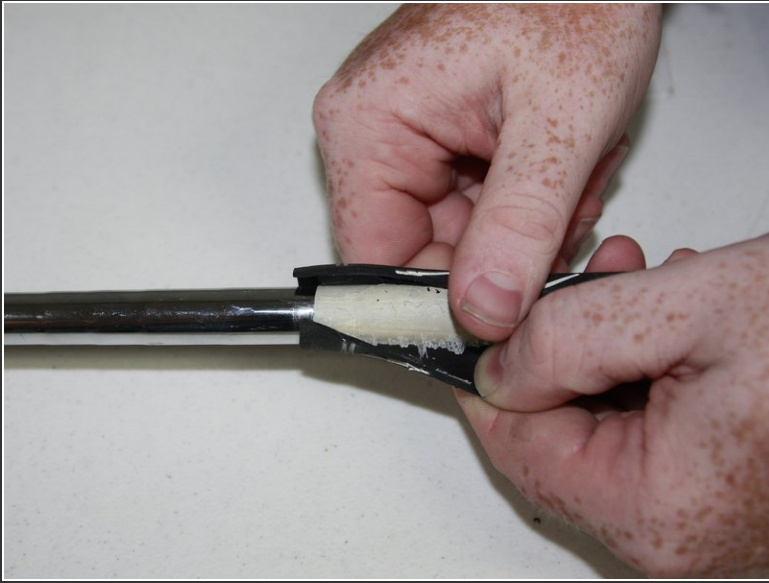
- Insert the shaft into the club head. Hold the head and shaft together for approximately 30 seconds to secure.
- ⓘ Epoxy cure time may vary by product. In this instance, we let the epoxy set and cure for 24 hours.

Step 6



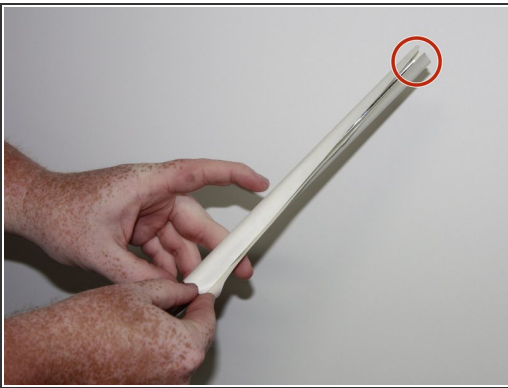
- To replace the grip of the club, place the club on a level surface where you can cut a straight line through the grip using a razor blade or a utility knife.

Step 7



- Once the grip is cut, remove the grip and peel off the old tape.

Step 8



- Apply the double-sided grip tape to the length of the grip wrapping it around the shaft . Leave 1/2 inch overhang in order to fold in the end of the shaft.
- Once the tape is fully wrapped around the shaft, smooth out any air bubbles.
- Remove the backing from the double-sided tape; then twist the overhanging 1/2 inch of tape and push it inside the shaft.

Step 9



- Pour grip solvent into the grip, approximately 1/3 full, while holding one finger on the end of the grip to avoid it running out.
- Shake the grip so the inside of the grip gets all the solvent into it.
- Pour the excess solvent onto the grip tape around the shaft and have a plate or pan to avoid having a mess. Apply more solvent, if needed, to cover the tape.

Step 10



- Align the grip so the decor is facing up and push the grip straight down the shaft. This step needs to be done as soon as possible to avoid getting the grip stuck.
- Allow it dry for 2-4 hours so the alignment does not get off.

Par!