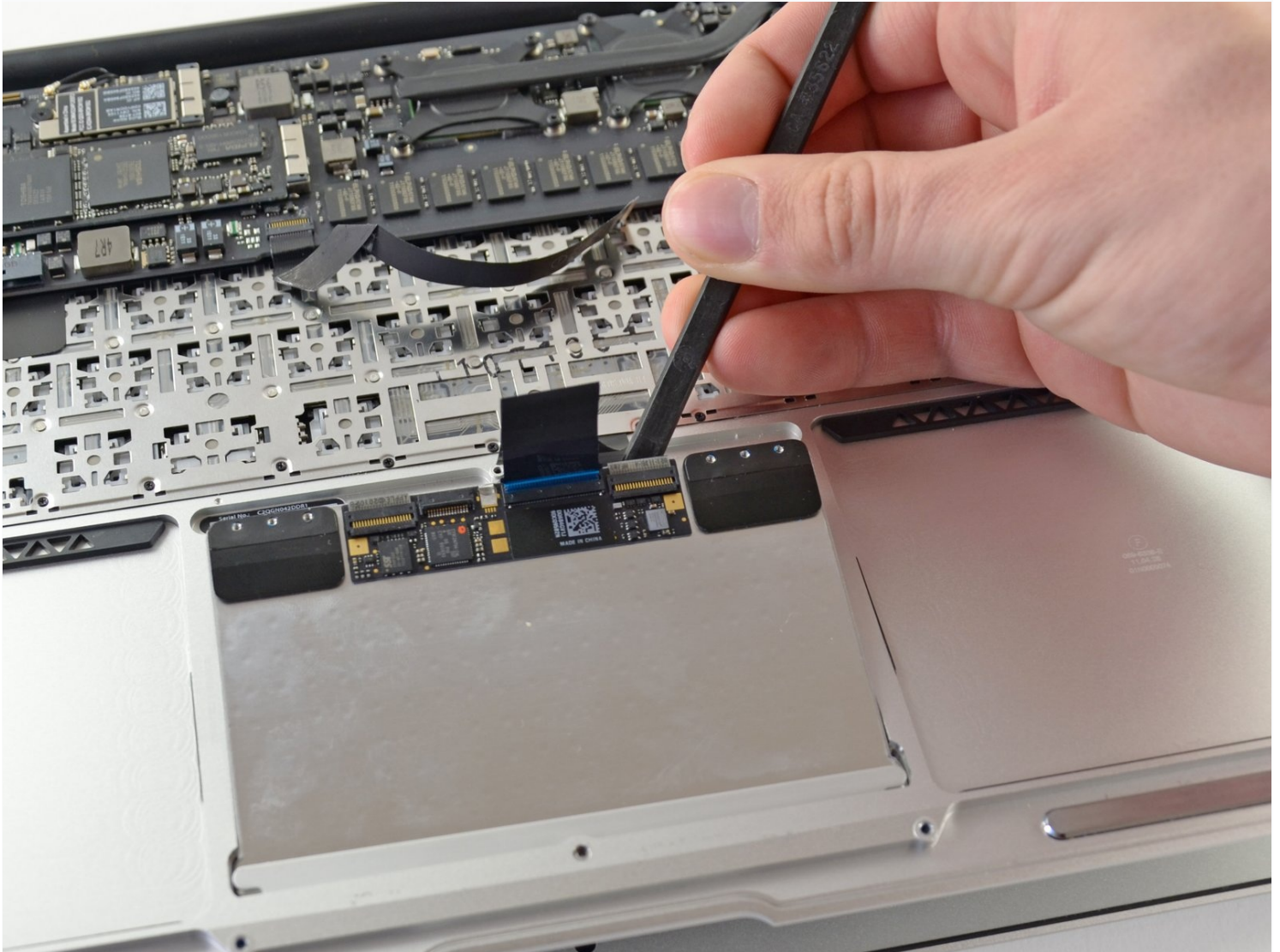




MacBook Air 13" Mid 2011 Trackpad Replacement

Use this guide to replace the trackpad.

Written By: Brittany McCrigler



INTRODUCTION

Use this guide to replace the trackpad.



TOOLS:

[P5 Pentalobe Screwdriver Retina MacBook Pro and Air](#) (1)

[Phillips #000 Screwdriver](#) (1)

[Spudger](#) (1)

[T5 Torx Screwdriver](#) (1)



PARTS:

[MacBook Air 13" \(Mid 2011\) Trackpad](#) (1)

[MacBook Air Trackpad Brackets and Screws](#) (1)

[MacBook Air 13" \(Mid 2011 Mid 2012\) Trackpad Cable](#) (1)

Step 1 — Lower Case



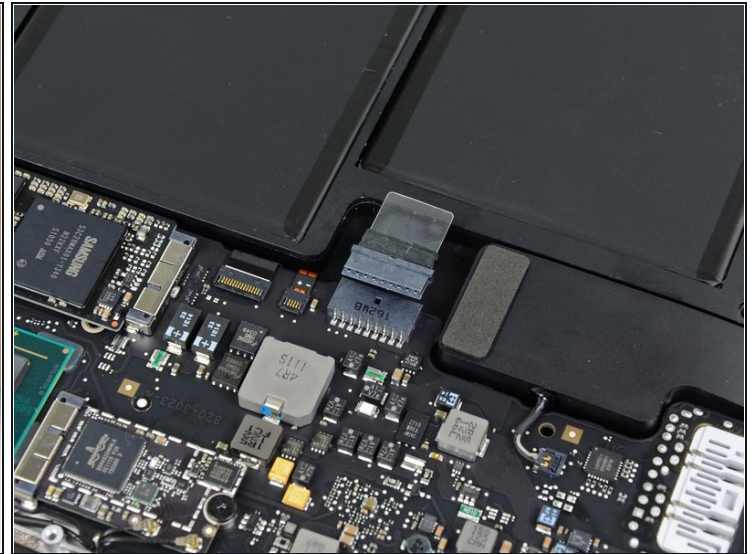
- ① Before proceeding, power down your MacBook. Close the display and lay it on a soft surface, top-side down.
- Use a [P5 Pentalobe](#) driver to remove ten screws securing the lower case, of the following lengths:
 - Two 9 mm screws
 - Eight 2.6 mm screws

Step 2



- Wedge your fingers between the display and the lower case and pull upward to pop the lower case off the Air.
- Remove the lower case and set it aside.

Step 3 — Battery

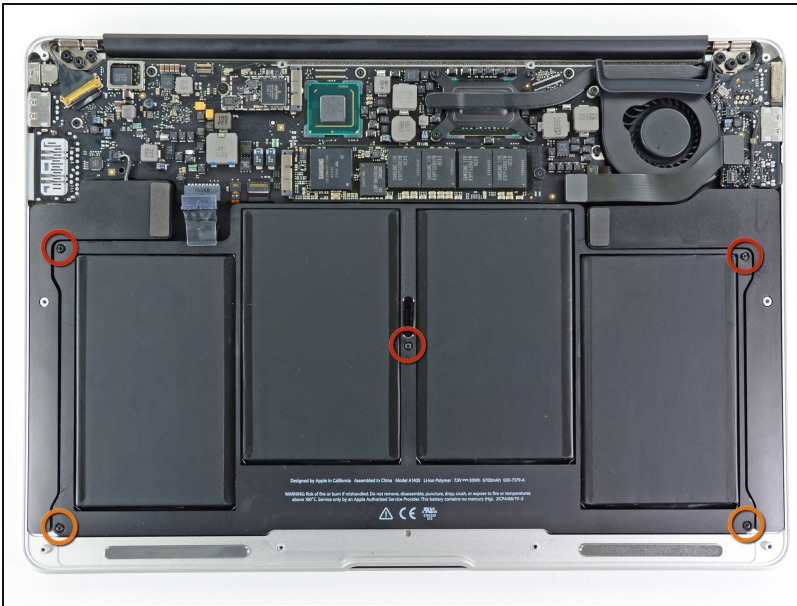


- Grab the clear plastic pull tab attached to the battery connector and pull it toward the front edge of the Air to disconnect the battery from the logic board.

⚠ Do not lift upward on the connector as you disconnect it.

- ☒ When reinstalling a new battery, it may be helpful to temporarily reconnect the battery before placing it in the frame. Make sure that the connector lays flat to the board.

Step 4



- Remove the following five screws securing the battery to the upper case:
 - Three 6.3 mm T5 Torx screws
 - Two 2.4 mm T5 Torx screws

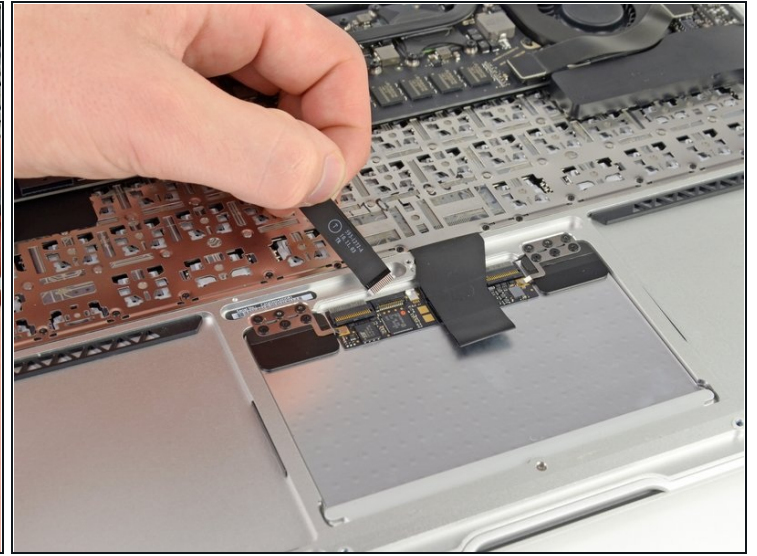
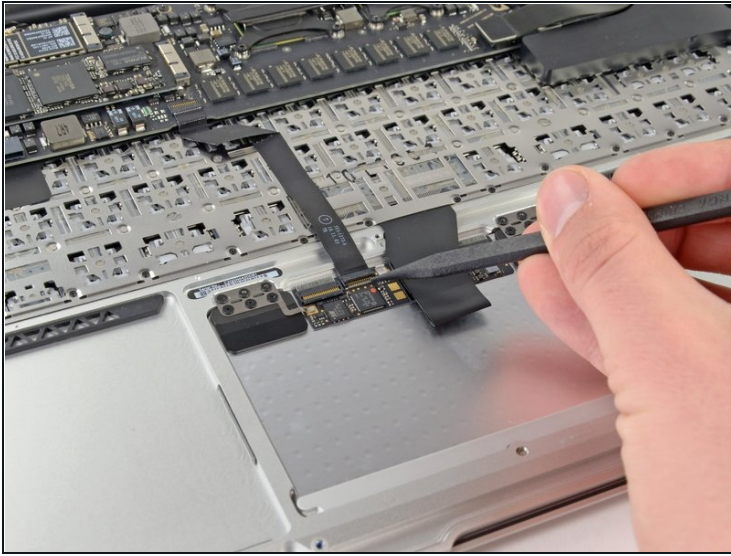
Step 5



⚠ When handling the battery, avoid squeezing or touching the four exposed lithium polymer cells.

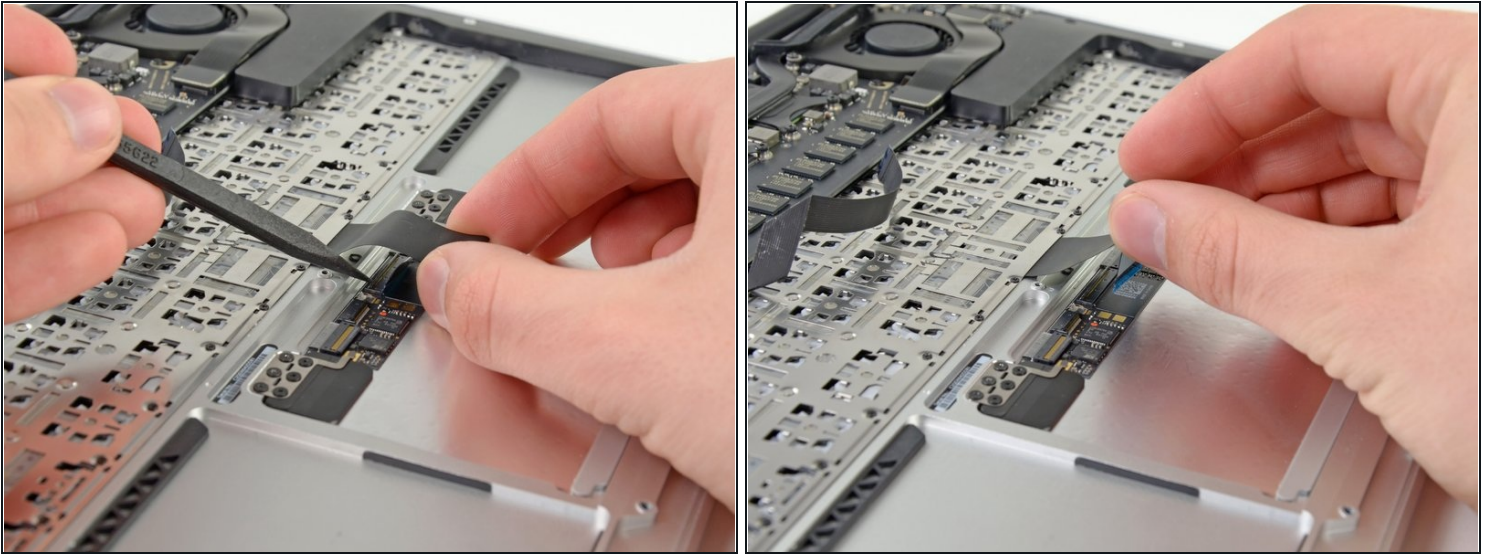
- Lift the battery from its edge nearest the logic board and remove it from the upper case.
- ☑ When installing the new battery, if there is a [thin plastic film](#) on your replacement battery, do not attempt to remove it. It is glued on and protects the battery pack while it is inside the MacBook.
- ☑ If you're installing a new battery, you should [calibrate](#) it after installation:
 - Charge it to 100%, and then keep charging it for at least 2 more hours. Then, unplug and use it normally to drain the battery. When you see the low battery warning, save your work, and keep your laptop on until it goes to sleep due to low battery. Wait at least 5 hours, then charge your laptop uninterrupted to 100%.
 - If you notice any unusual behavior or problems after installing your new battery, you may need to [reset your MacBook's SMC](#).

Step 6 — Trackpad



- Use the tip of a spudger or your fingernail to flip up the retaining flap on the trackpad ribbon cable ZIF socket.
- ⚠ Be sure you are prying up on the hinged retaining flap (on the side opposite the cable), **not** the socket itself.
- Pull the trackpad ribbon cable straight out of its socket toward the rear edge of the Air.

Step 7

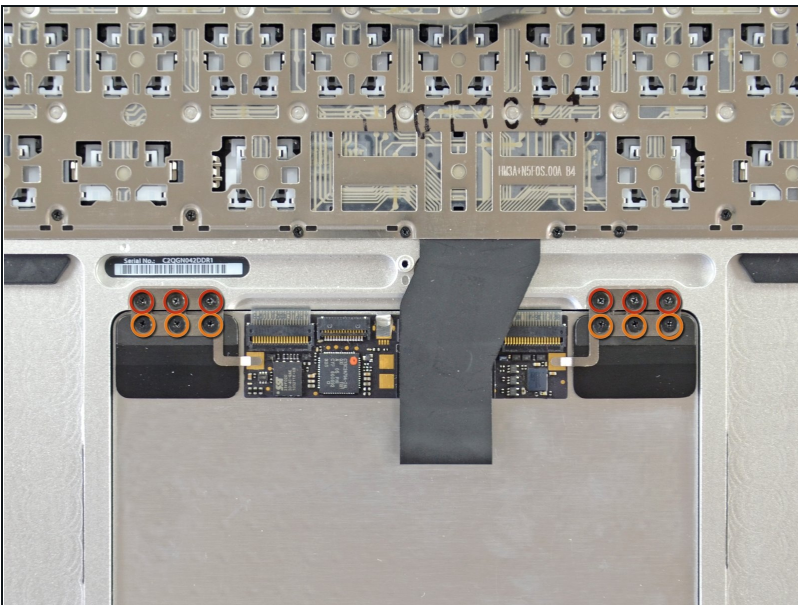


- While carefully lifting the keyboard ribbon cable with one hand, use the tip of a spudger or your fingernail to flip up the retaining flap on the keyboard ribbon cable ZIF socket.

⚠ Be sure you are prying up on the hinged retaining flap, **not** the socket itself.

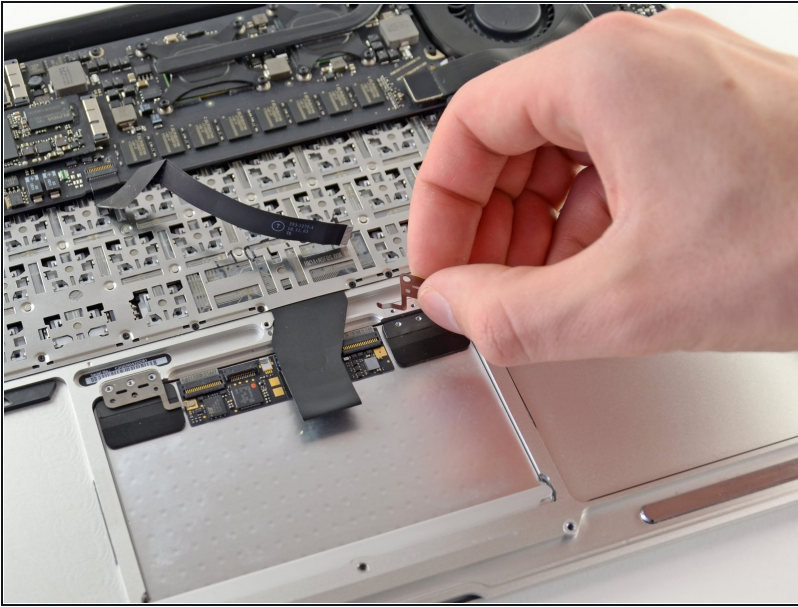
- Pull the keyboard ribbon cable straight out of its socket toward the front edge of the Air.

Step 8



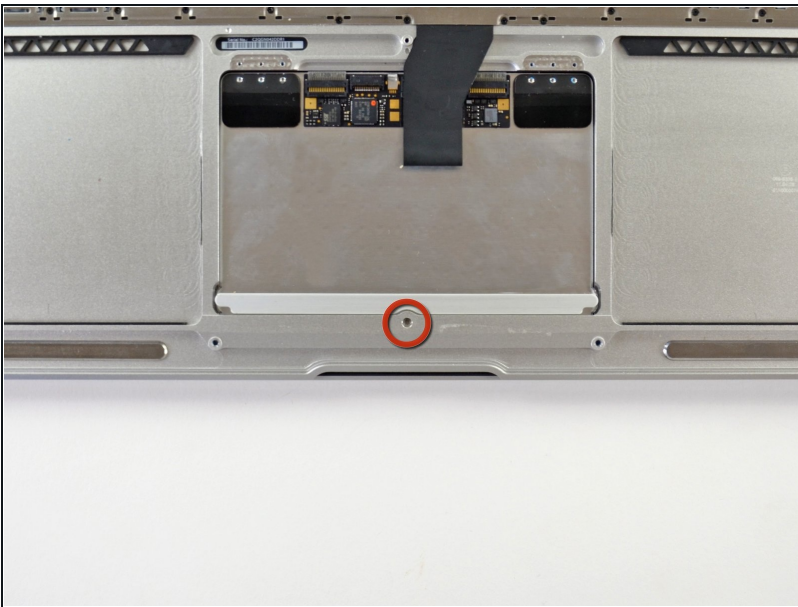
- Remove the following twelve screws:
 - Six 1.6 mm Phillips screws securing the trackpad to the upper case.
 - Six 1.6 mm Phillips screws securing the trackpad brackets to the trackpad.
- A Phillips #000 should be sufficient, but a JIS #000 may also work as well.

Step 9



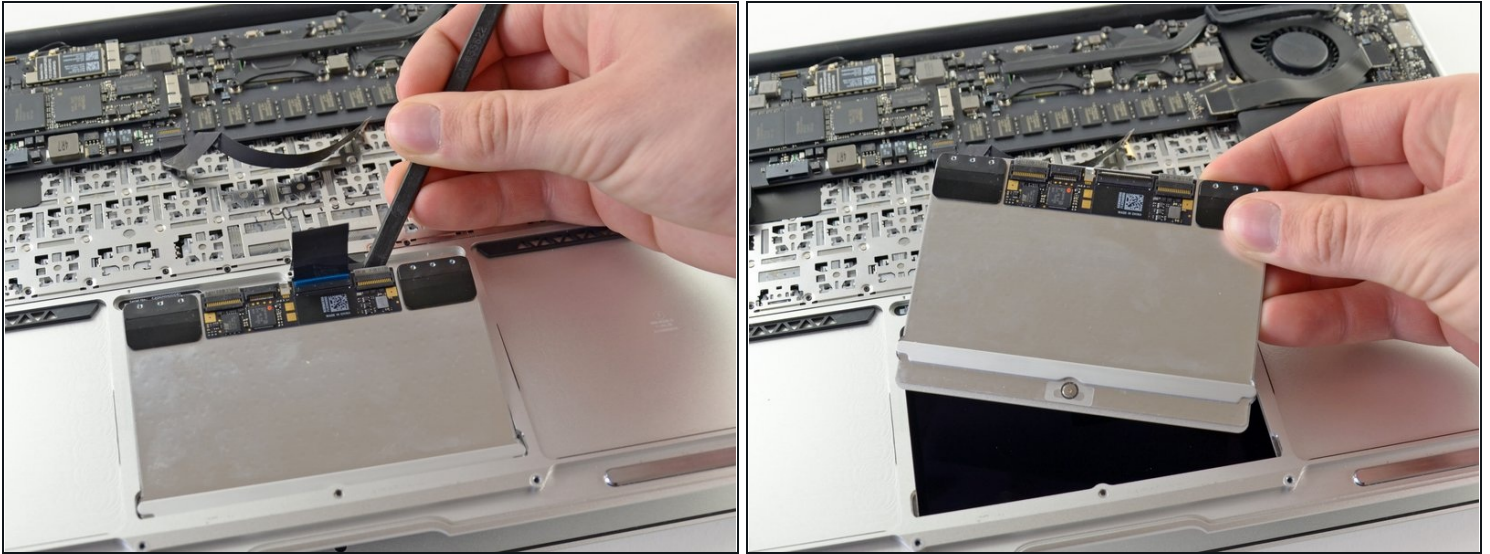
- Remove the right and left trackpad brackets from the upper case.

Step 10



- Remove the 1.4 mm T5 Torx set screw from its tapped hole near the front edge of the upper case.
- ☑ During reassembly, do not over-tighten the set screw, as the button will cease to click at a certain point. Adjust the set screw until the movable side of the trackpad has minimal play.

Step 11



- Use the flat edge of a spudger to carefully lift the edge of the trackpad closest to the keyboard from its recess in the upper case by lifting it away from the brackets attached to the upper case.
 - Remove the trackpad from the upper case.
-

To reassemble your device, follow these instructions in reverse order.