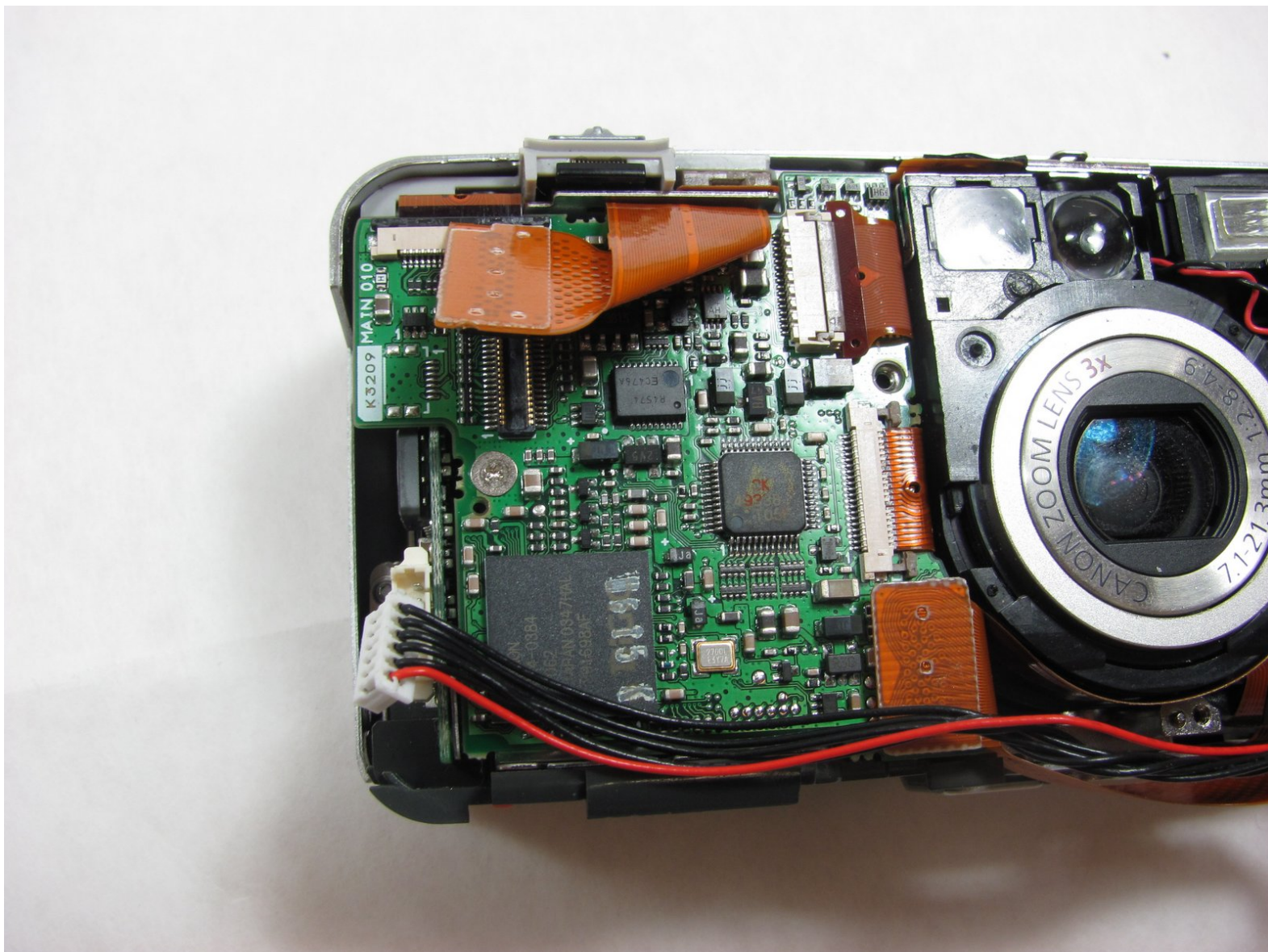




Canon PowerShot S50 Left Motherboard Replacement

This guide will help you disassemble the left side of the motherboard.

Written By: Jacob



INTRODUCTION

Use this guide to remove and/or replace the motherboard on the left side of the camera.



TOOLS:

- [Fingers](#) (1)
 - [Phillips #00 Screwdriver](#) (1)
 - [Anti-Static Project Tray](#) (1)
 - [Spudger](#) (1)
 - [Tweezers](#) (1)
-

Step 1 — Battery



- Place camera LCD side up and press up on the battery door.
- Let it swing open until you can see the battery inside.

Step 2



- Press down on the orange plastic.
- This will gently eject the battery from its compartment.

Step 3



- Holding the edges, slide out the battery.

Step 4 — Front Panel/Battery Door



- Look at the camera from the side with the lanyard and 4 screws.
- Remove the two 3.4 mm screws on the metallic colored part.

Step 5



- Remove the 3mm screw on the top left.
- *i* NOTE: When reassembling, it is helpful to put the top screw back in before placing the front cover back on the camera.
- Now remove the 5.3mm screw on the bottom.

Step 6



- Place the camera LCD side down.
- Remove the two 5.3mm screws by the battery door.

Step 7



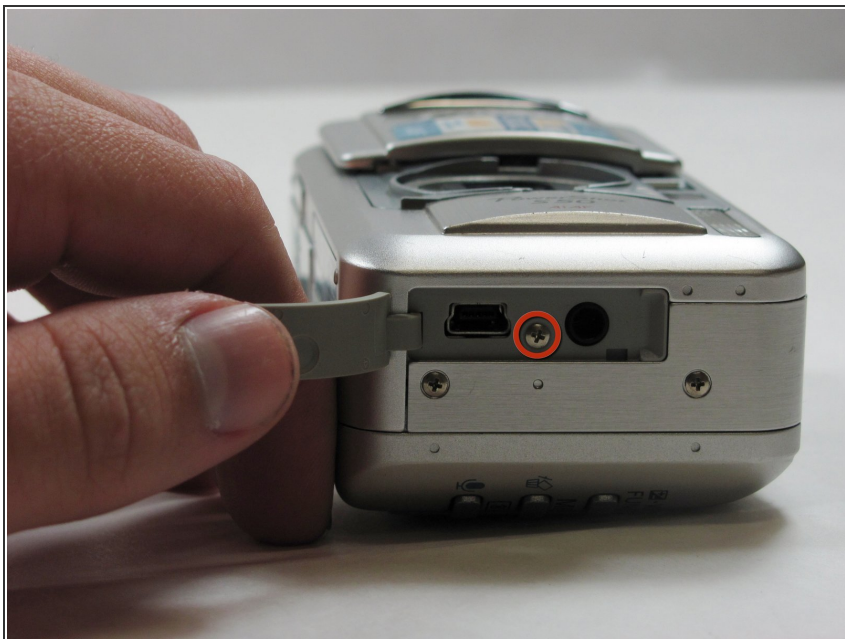
- Remove the four 3.4mm screws on the bottom of the camera around the tripod mount.
- ① Make sure to keep these screws separate from the previous 5.3 mm screws.

Step 8



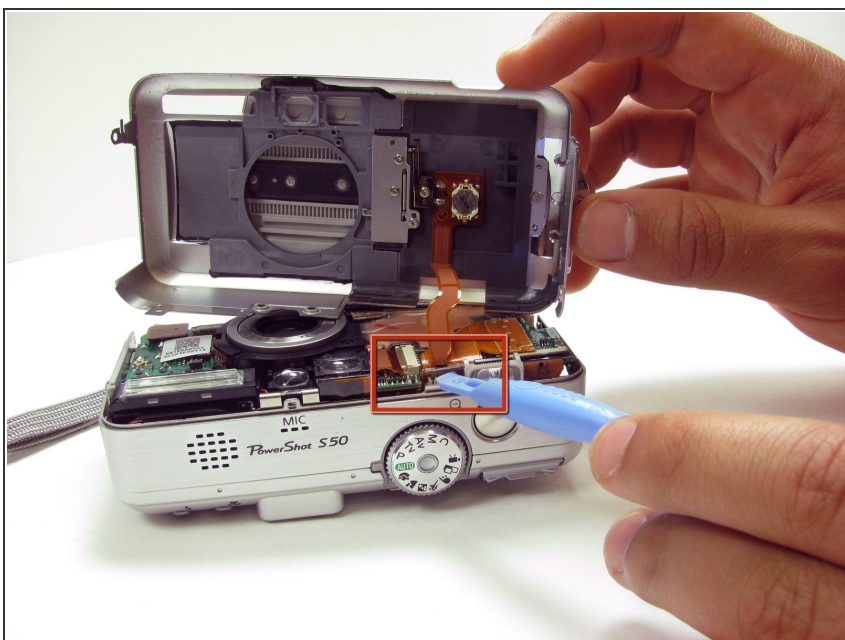
- Stand the camera back up.
- Remove the two 3.6mm screws on the side with the A/V Out port.

Step 9



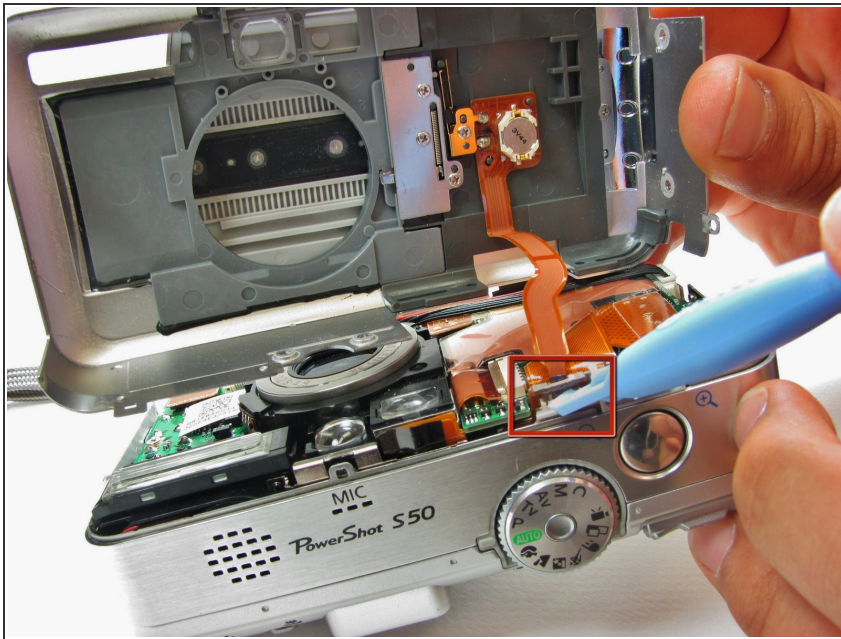
- Lift open the rubber flap covering the A/V Out port.
- Remove the 3.4mm screw in the center.
- ⓘ During reassembly, put the A/V out rubber door on before replacing the front panel of the camera

Step 10



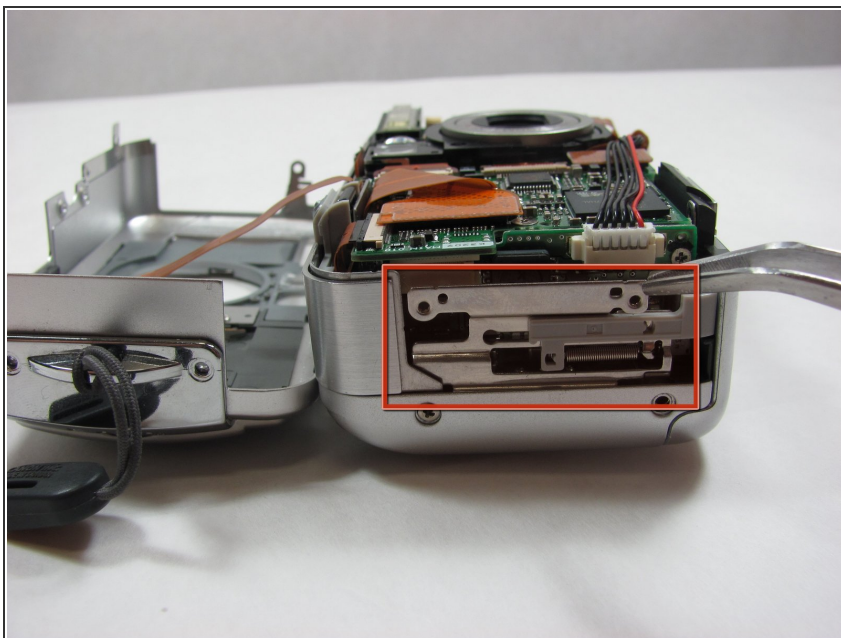
- Use a spudger and gently open up the front panel of the camera.
- ⚠ A thin plastic ribbon will stay connected by a brown piece to front panel of the camera.

Step 11



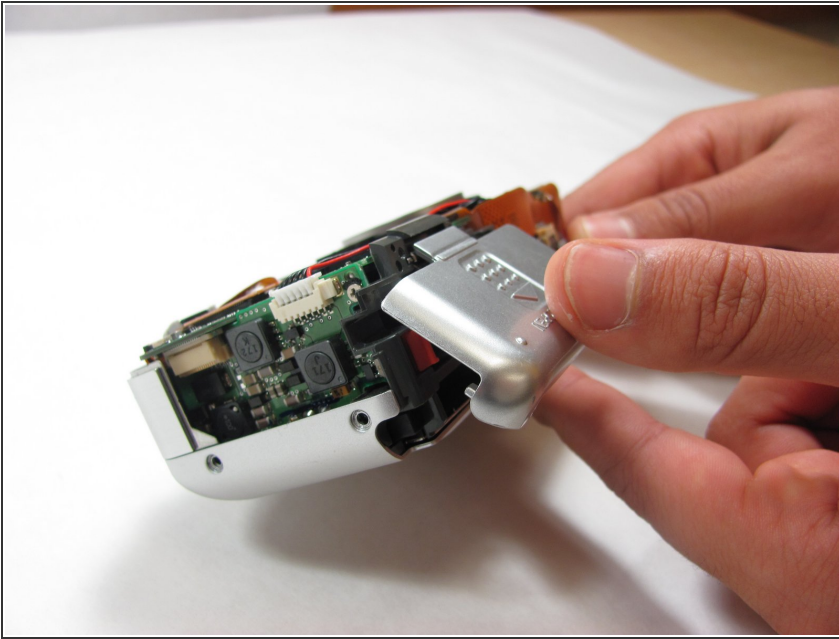
- There will be a brown plastic piece keeping the thin plastic ribbon in place.
- Use the spudger to pull out the brown plastic piece attached to the orange plastic.

Step 12



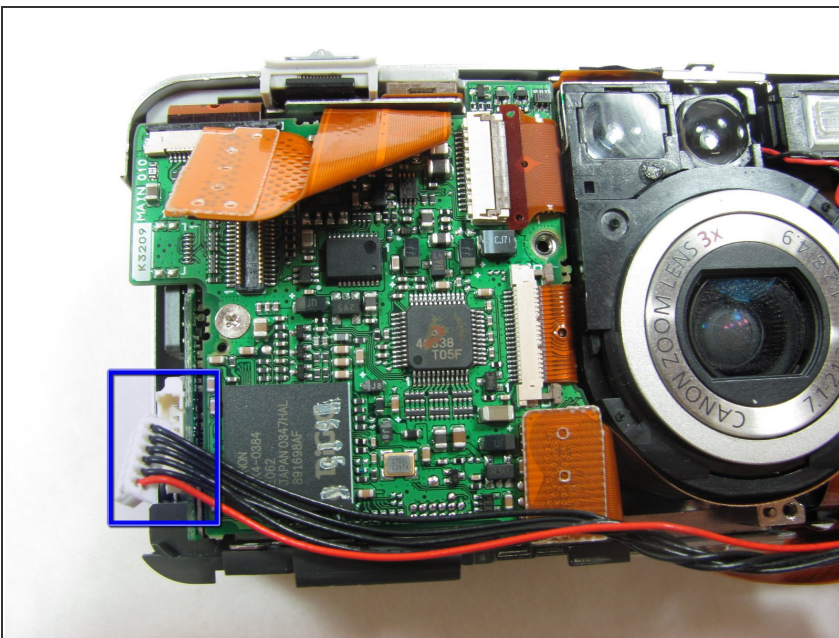
- Use a pair of tweezers and remove the metal piece inside the camera.

Step 13



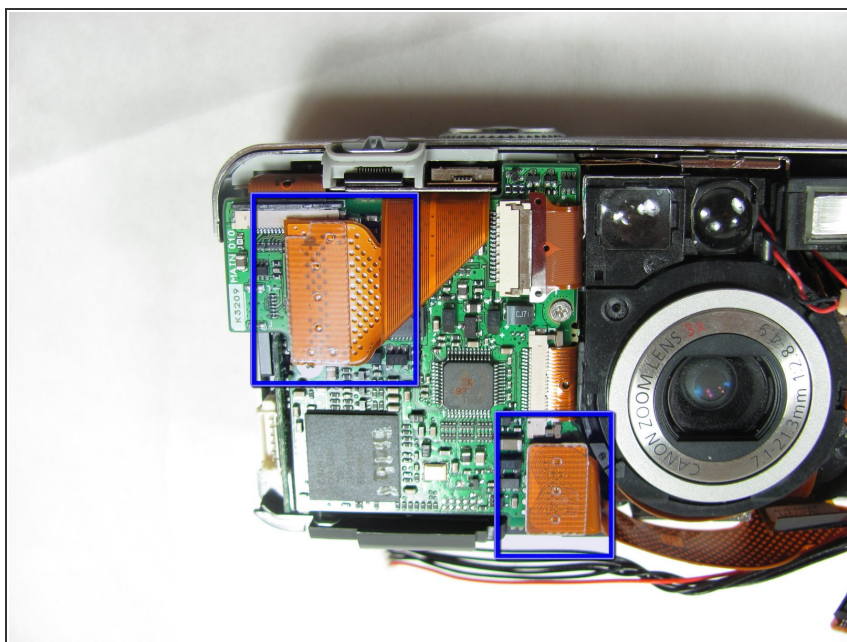
- Remove the battery door
- ⓘ NOTE: Putting this back on requires aligning the spring on the back of the door with the hole on the camera

Step 14 — Left Motherboard



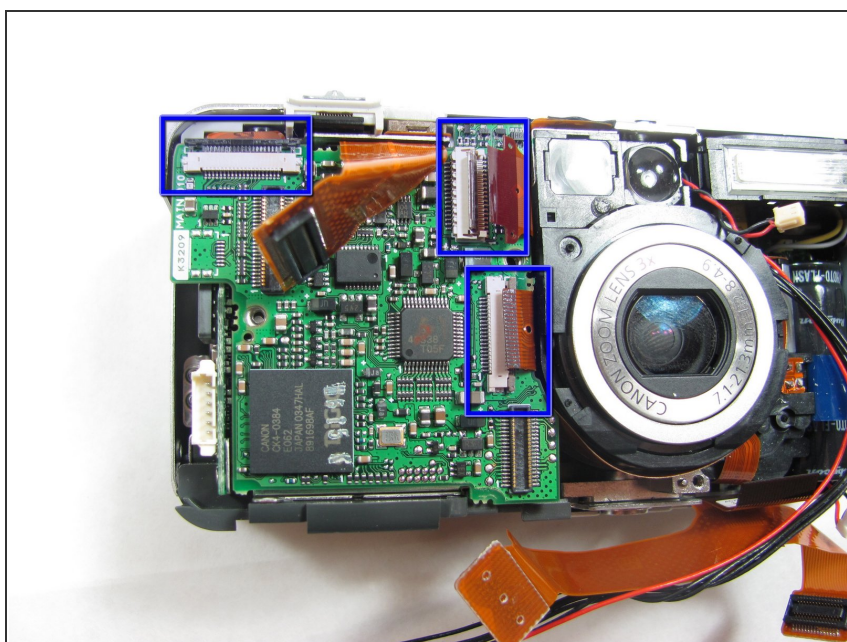
- Disconnect the black and red cable on the left side of the lens.

Step 15



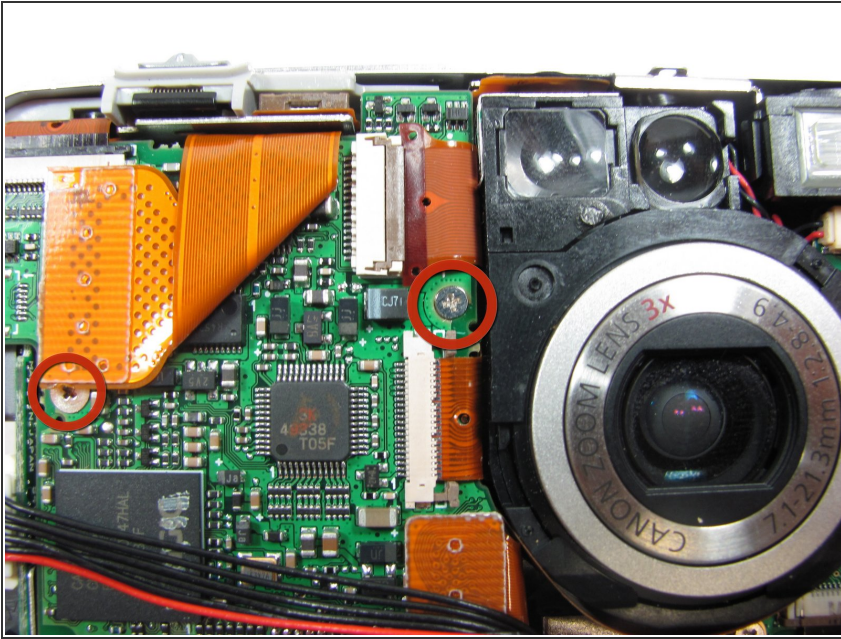
- Disconnect the two orange ribbons on the front of the mother board.

Step 16



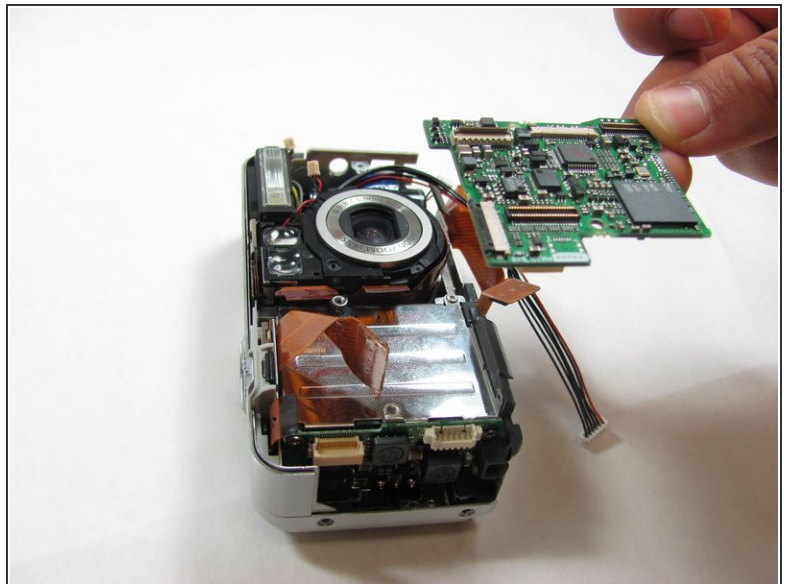
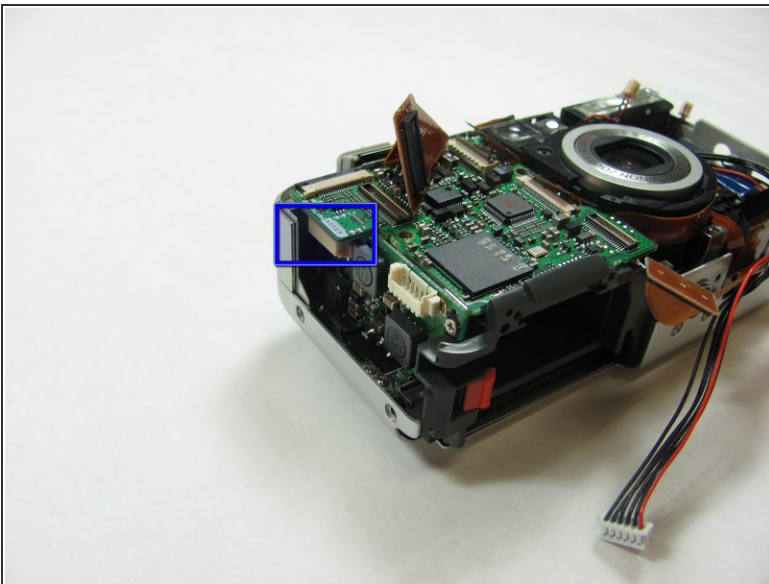
- Pull off the orange ribbon on the upper left of the motherboard.
- ⓘ This will become available only after removing the ribbon on top.
- Remove the other two orange ribbons on the middle of the left motherboard.

Step 17



- Remove the 3.3mm screw halfway up the left side of the motherboard just to the left of the lens.
- Go under the piece of plastic and remove the 2.6mm screw.

Step 18



- Unplug the top part of the left motherboard.
- Gently lift the left motherboard up to remove

To reassemble your device, follow these instructions in reverse order.

This document was generated on 2020-11-28 03:52:55 AM (MST).

