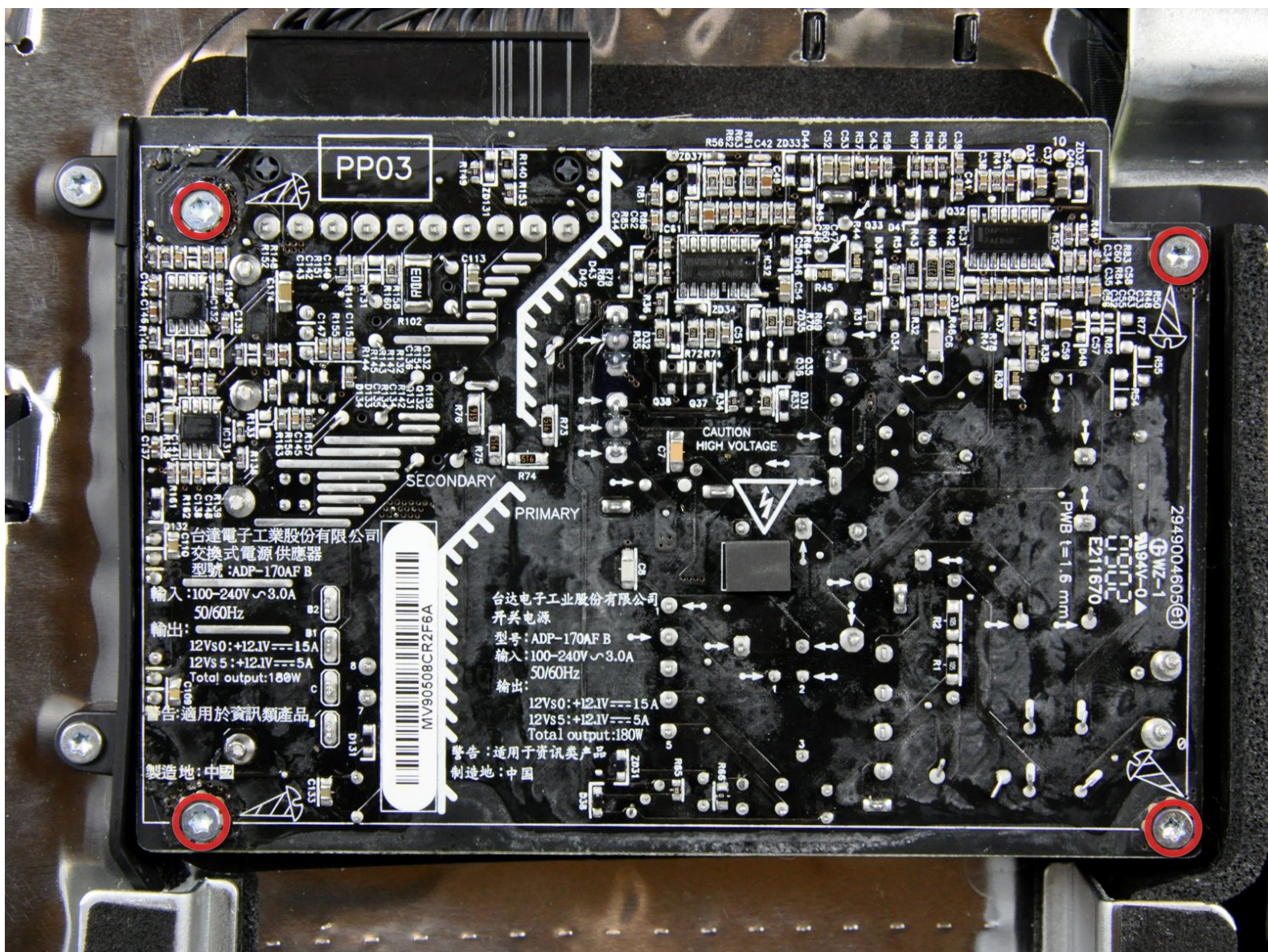




iMac Intel 20" EMC 2266 Power Supply Replacement

Written By: Walter Galan



INTRODUCTION

Power your iMac by replacing the power supply.



TOOLS:

- [Heavy-Duty Suction Cups \(Pair\)](#) (1)
- [Phillips #1 Screwdriver](#) (1)
- [Spudger](#) (1)
- [T10 Torx Screwdriver](#) (1)
- [T6 Torx Screwdriver](#) (1)
- [T8 Torx Screwdriver](#) (1)



PARTS:

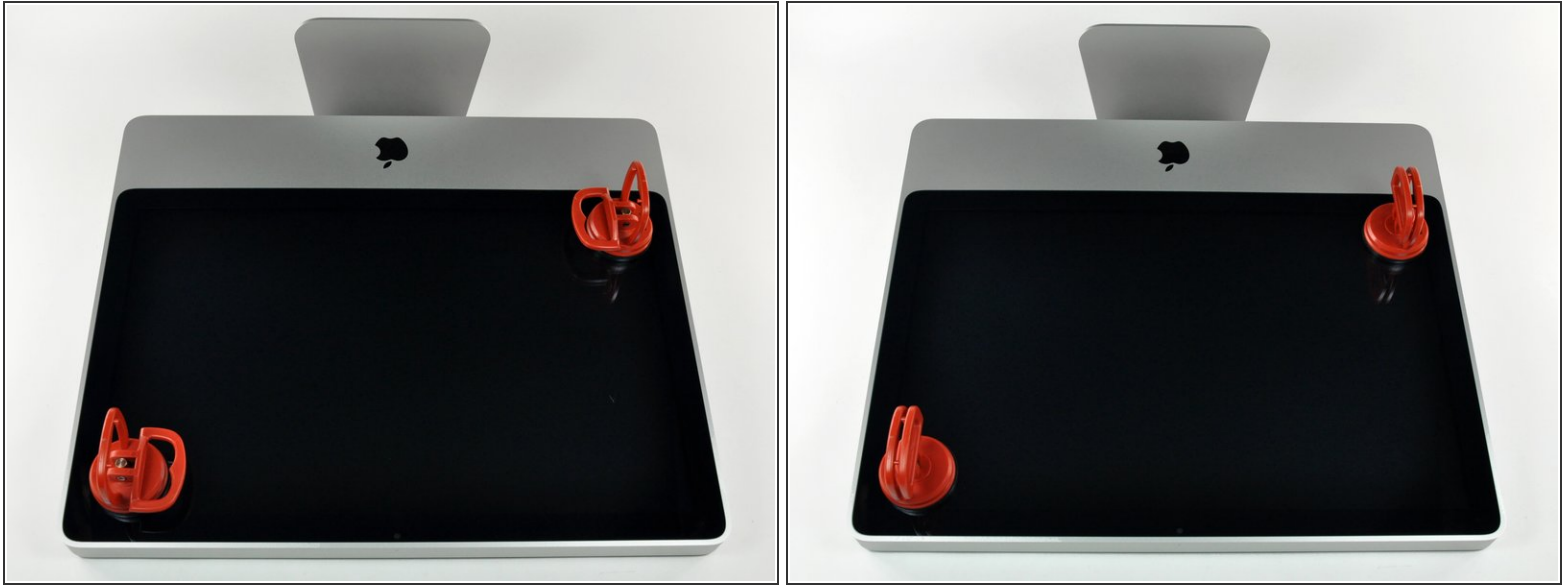
- [iMac Intel 20" 2.66 \(EMC No. 2266\) GHz Power Supply](#) (1)

Step 1 — Access Door



- Lay your iMac front side down on a table with the lower edge facing yourself.
- Loosen the single Phillips screw in the center of the access door.
- ⓘ This screw is captive in the access door.
- Remove the access door from your iMac.

Step 2 — Glass Panel



- i** The glass panel is fixed onto the front bezel with fourteen magnets around its perimeter.

 - Stick two suction cups to opposing corners of the glass panel.
- i** To attach the [suction cups](#) we sell, first position the suction cup with the movable handle parallel to the face of the glass panel. While lightly holding the suction cup against the glass, raise the movable handle until it is parallel with the other handle.
- i** If your suction cups refuse to stick, try cleaning both the glass panel and the suction cup with a mild solvent.

Step 3



- Gently pull the glass panel straight up off the iMac.

⚠ The glass panel has several positioning pins around its perimeter. To avoid shearing these pins off the glass panel, be sure to only pull straight up during removal.

★ Be meticulous about cleaning the LCD and the inside face of the glass panel before reinstallation, as any fingerprints or dust trapped inside will be annoyingly visible when the display is on.

★ When replacing the glass, be sure there's nothing between the glass and the frame. Stray cables could be damaged or crack the glass.

Step 4 — Front Bezel



- Remove the following 12 screws securing the front bezel to the rear case:


- Eight 13 mm T8 Torx.


- Four 25 mm T8 Torx.

- ⓘ On the 24" iMac Intel Model A1225, the bottom center two screws are long (26mm), four on sides (two left, two right) are medium (18mm), and the remaining 6 (four top, two bottom corners) are short (14mm).

Step 5



 The front bezel is still attached to the iMac by the microphone cable.

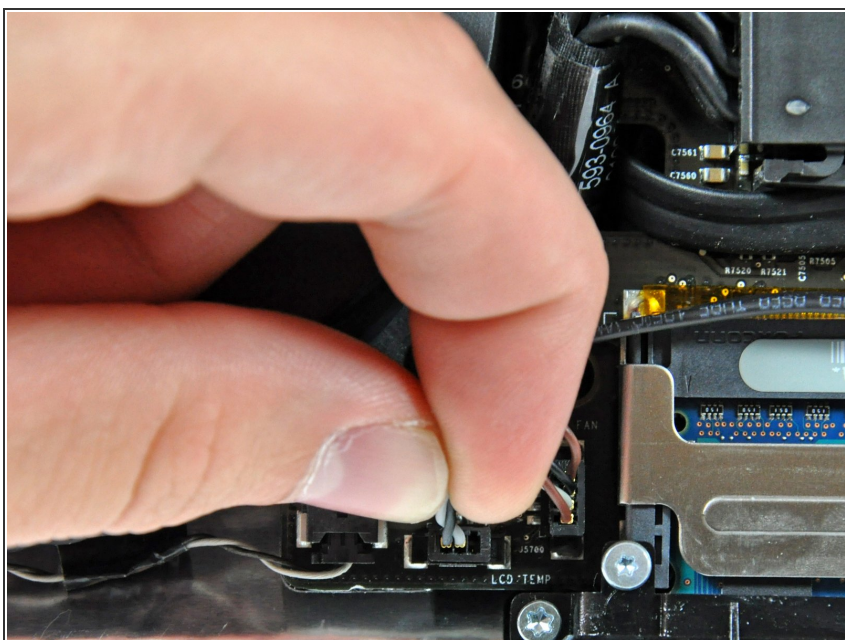
- Gently lift the front bezel from its top edge off the rear case.
 - Once the top edge of the front bezel has cleared the rear case, rotate the front bezel toward the stand and lift it off the rear case.
 - Rotate the front bezel away from the rest of the device and lay it above the top edge of the iMac.
-  When reinstalling the front bezel, start at the lower edge and make sure it is flush with the rear case before lowering the top edge onto the iMac.

Step 6



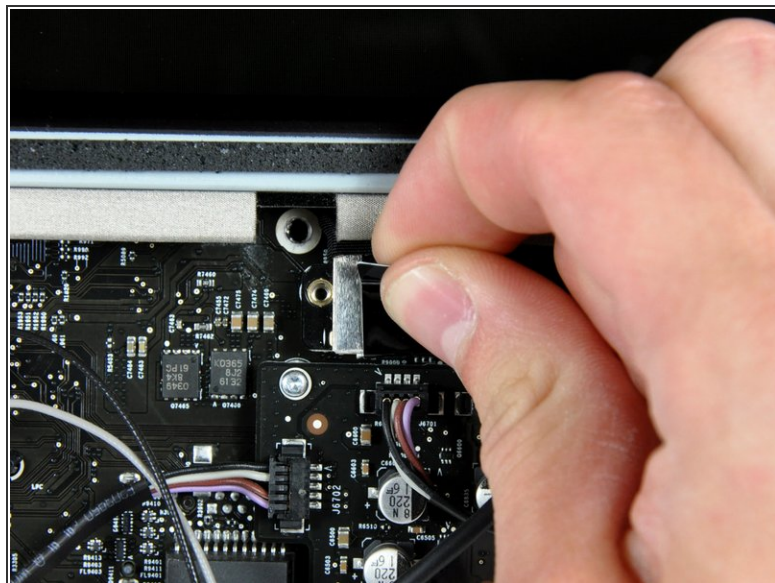
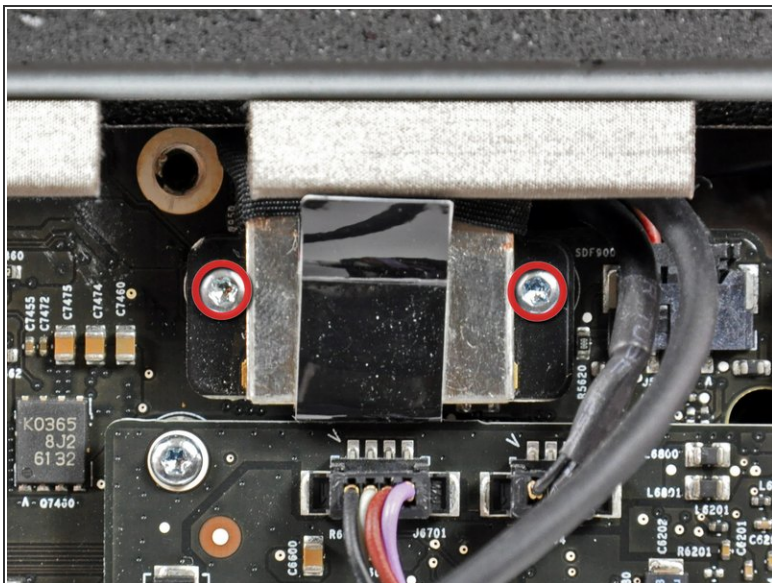
- Disconnect the microphone cable connector, removing tape as necessary.
- ★ For the front bezel to sit properly, be sure to tuck the microphone cable and connector into the void next to the camera board.

Step 7 — Display Panel



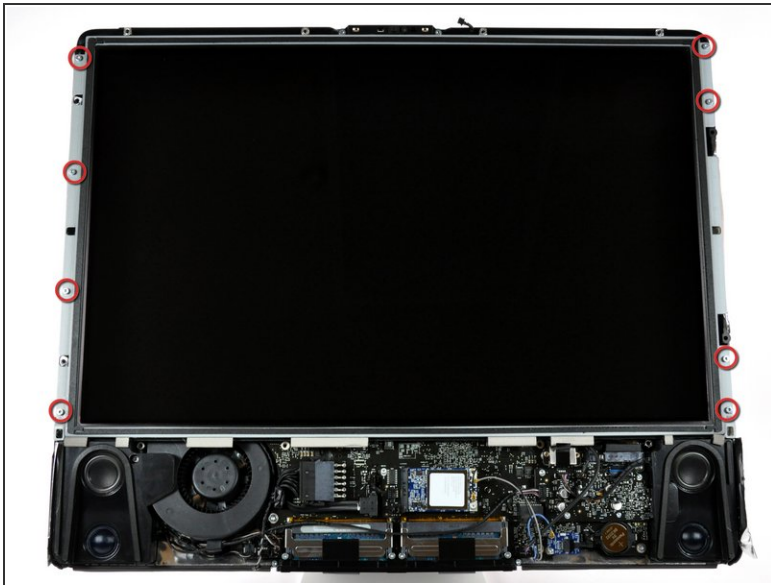
- Pull the LCD temperature sensor connector straight up off its socket on the logic board.
- (located at the top of the logic board on the 24")

Step 8



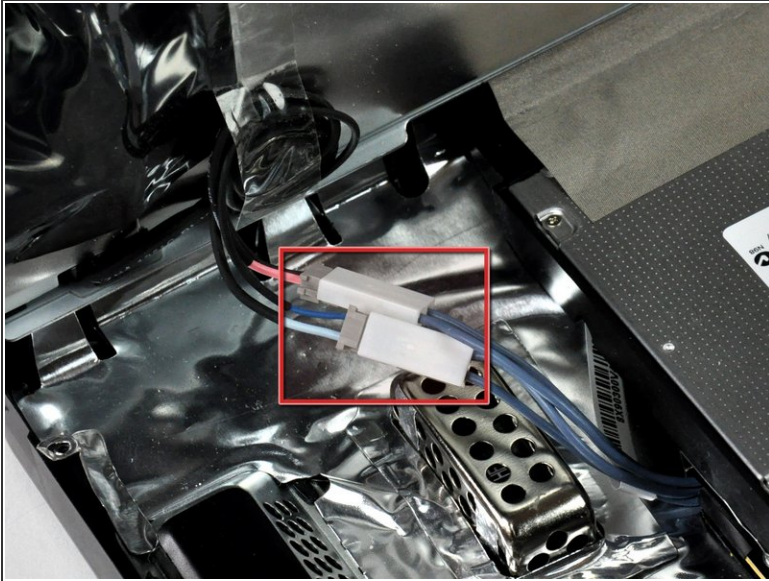
- Remove the two T6 Torx screws securing the display data cable to the logic board.
- Use the attached black tab to pull the display data cable connector straight away from the logic board.

Step 9



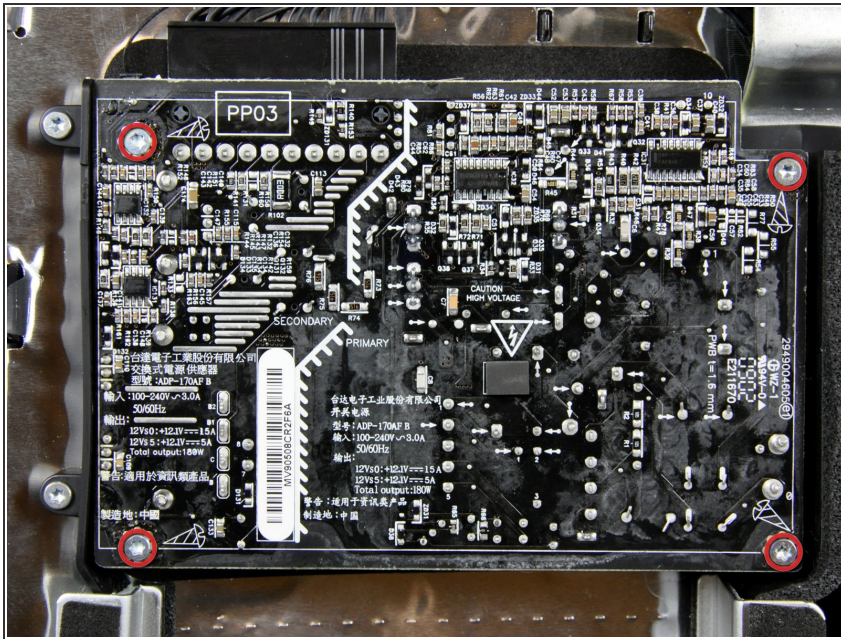
- Remove the eight T8 Torx screws securing the display panel to the rear case.
- Lift the display panel from its left edge and rotate it toward the right edge of the iMac.


Step 10



- With the display panel still lifted, disconnect the four inverter cables.
- ✦ During reinstallation, place the four inverter cable connectors in voids between components attached to the rear panel so the display panel will sit flush on the edges of the rear case.
- (combined into one plug in on the 24")
- ⚠ Be sure to keep track of the cables, as they do not have proprietary sockets. Mismatched cables can cause screen issues.

Step 11 — Power Supply



 The next few steps bring your hands close to the exposed face of the power supply. **Do not** touch the face of the power supply to avoid a high voltage shock from the many large capacitors attached to the board.

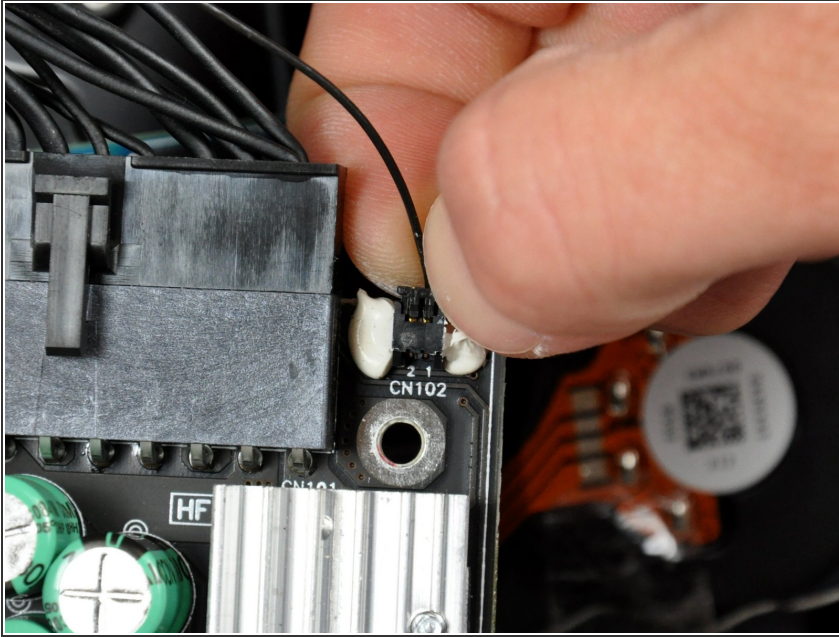
- Remove four T10 Torx screws securing the power supply to the rear case.
- Grab the power supply by its edges and slightly lift it out of the rear case.

Step 12



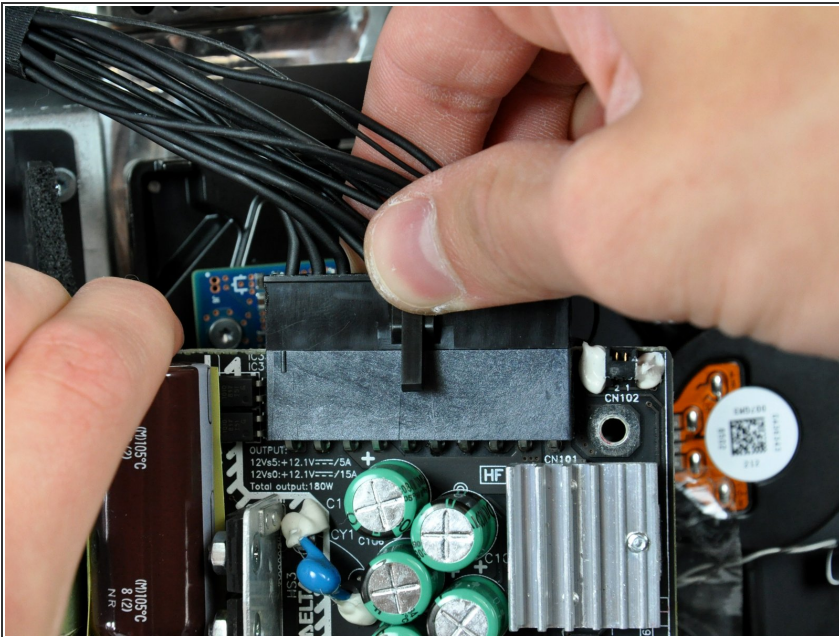
- Disconnect the AC inlet cable connector by pulling it away from its socket while depressing the lock mechanism.

Step 13



- i** The single-wire connector near the upper left corner of the power supply is small and held very tightly in its socket, making it inherently difficult to remove. Be sure to pull only on the connector during removal, as pulling the cable will surely cause it to break.
- Grab the connector between the nails on your thumb and index fingers and pull it toward the top of your iMac, disconnecting it from the power supply.

Step 14



- Disconnect the DC power supply cable connector from the power supply by pulling it straight up from its socket.
- Lift the power supply out of the rear case.

To reassemble your device, follow these instructions in reverse order.