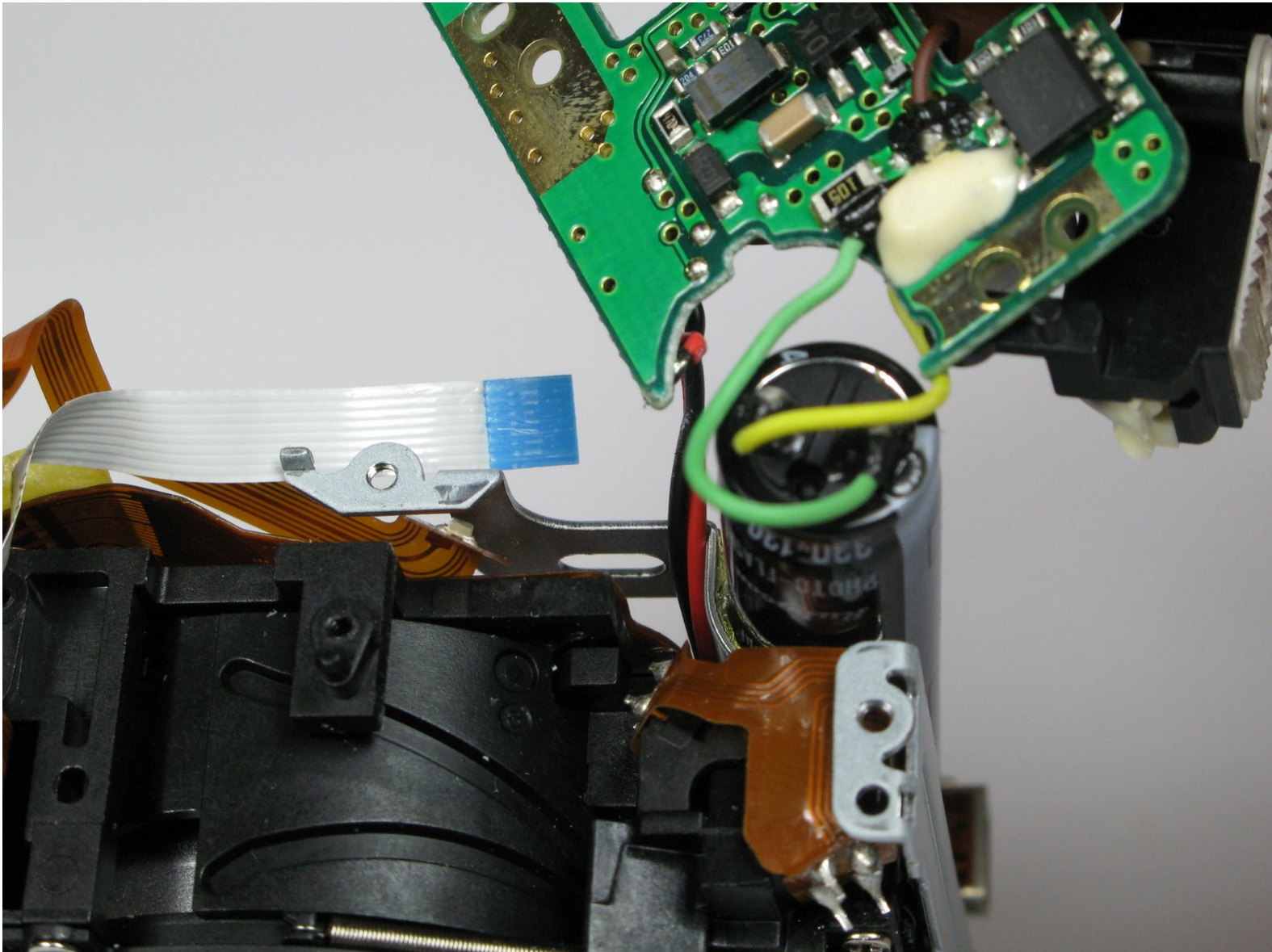




# Canon PowerShot A75 Motherboard/Capacitor Replacement

This guide will tell you how to remove and install the motherboard/capacitor of the camera.

Written By: Carlos Fletes



---

## INTRODUCTION

Use this guide to replace the Canon PowerShot A75's upper motherboard.

---



### TOOLS:

- [Phillips #00 Screwdriver](#) (1)
  - [Tweezers](#) (1)
-

## Step 1 — Batteries



- Turn the camera over and locate the "BATT OPEN" sliding switch.

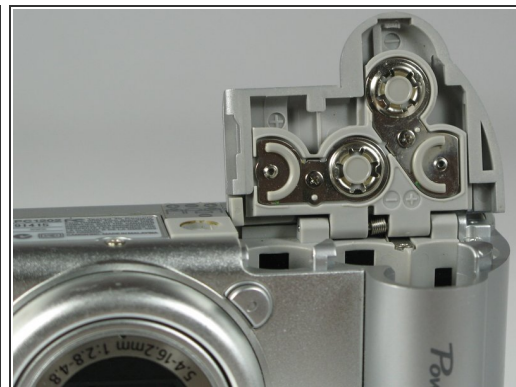
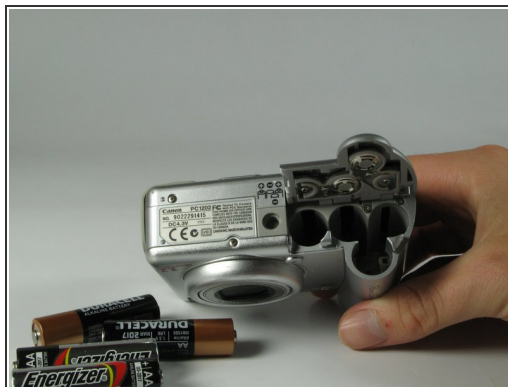
## Step 2



- Slide the switch to the right.
  - ⓘ The battery cover should slide down and spring open.



## Step 3



- Remove the 4 AA batteries.
  - ⓘ Watch for the orientation of the batteries as they slide out.
  - ☑ The battery orientation is shown under the battery flap itself and on a sticker next to the battery flap.

## Step 4 — Casing



- Remove the three 2.5mm screws on the bottom of the camera.

## Step 5



- Remove the 3.8mm screw underneath the flap that covers the A/V port.

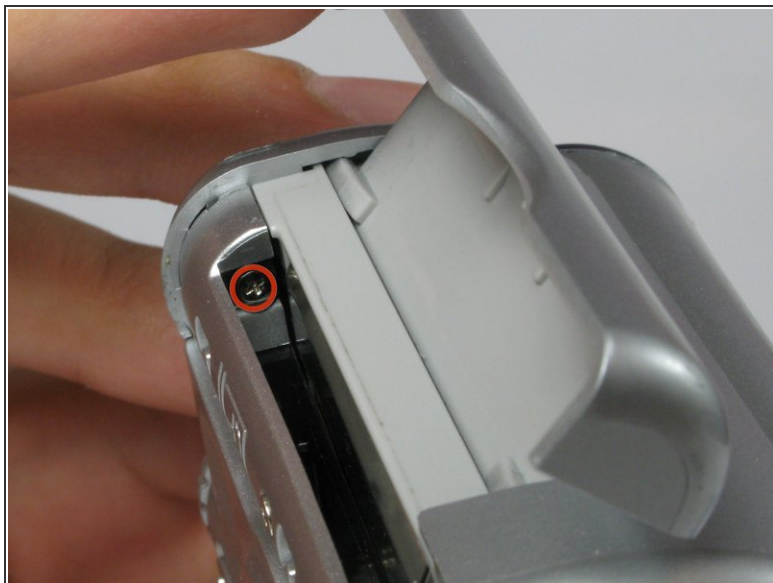
## Step 6



- Remove the 2.4mm screw located underneath the cover of the memory card slot.

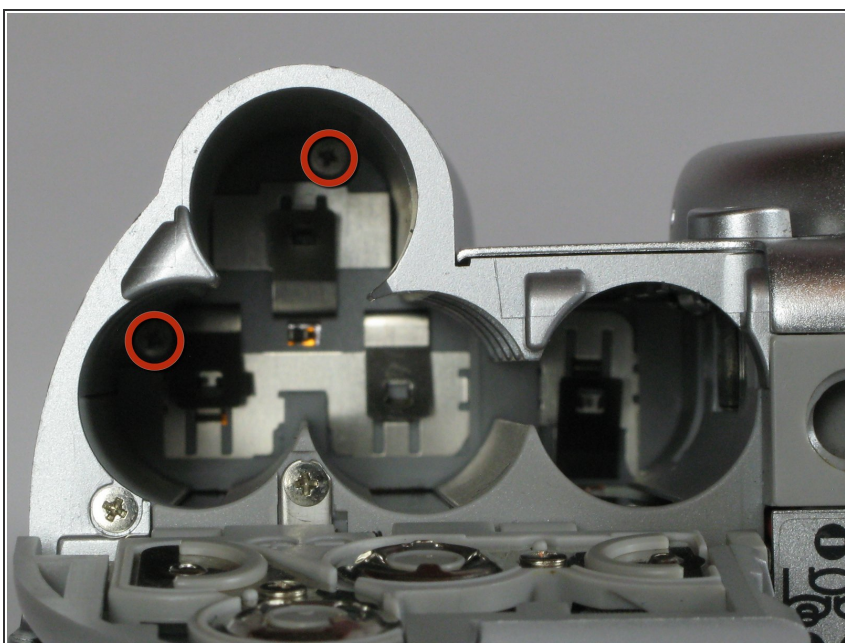


## Step 7



- Open the memory card slot by sliding it laterally until you hear a click.
- Remove the 5.9mm screw in the upper corner of the memory card slot.


## Step 8



- Remove the two 4.1mm screws at the bottom of the battery flap.

## Step 9



- Lift the shutter button and speaker part from the top of the camera.  
 **DO NOT** pull the part too hard because there is a plug connecting the speaker to the camera.

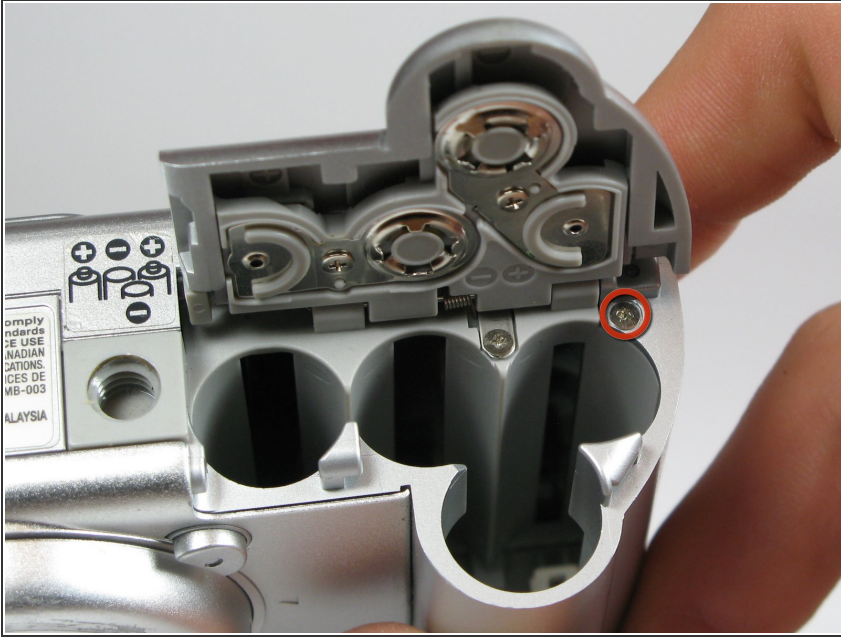
## Step 10



- Using a pair of tweezers, grab the plug that connects the speaker to the camera and gently pull it out.

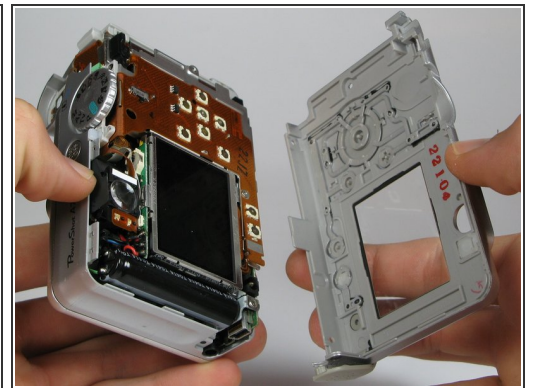


## Step 11



- Remove the rightmost 4.2mm screw underneath the battery cover, not the center screw.

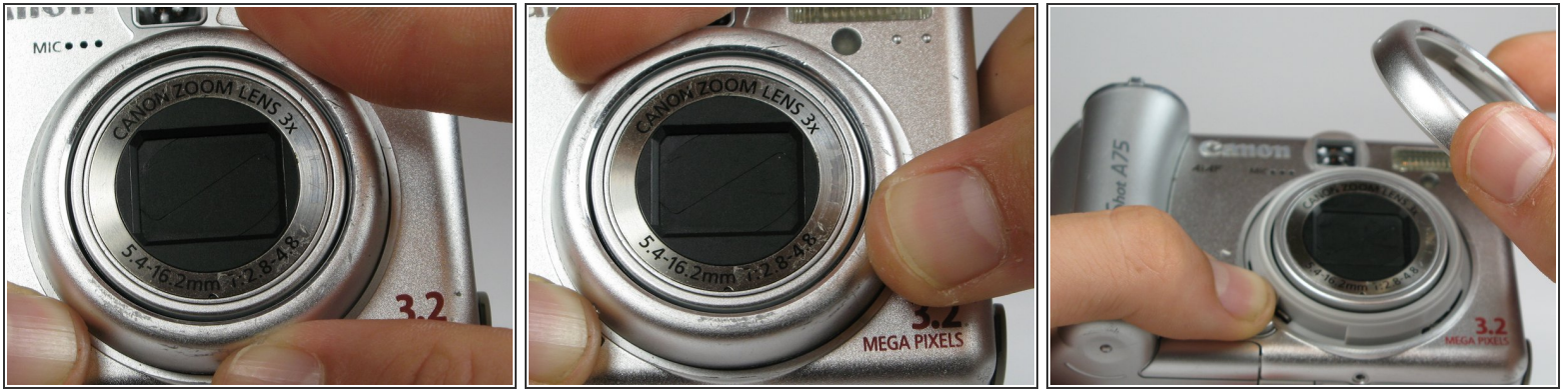
## Step 12



- Separate the back casing and front casing of the camera using your hands.
- ⓘ Pulling the two halves apart can be difficult, especially at the top. Use a moderate amount of force.

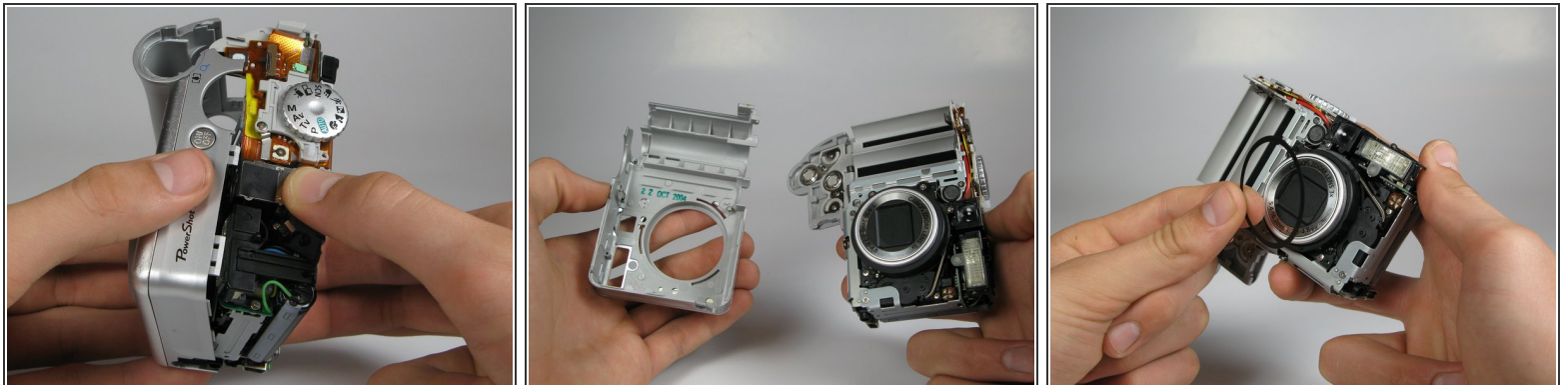


## Step 13



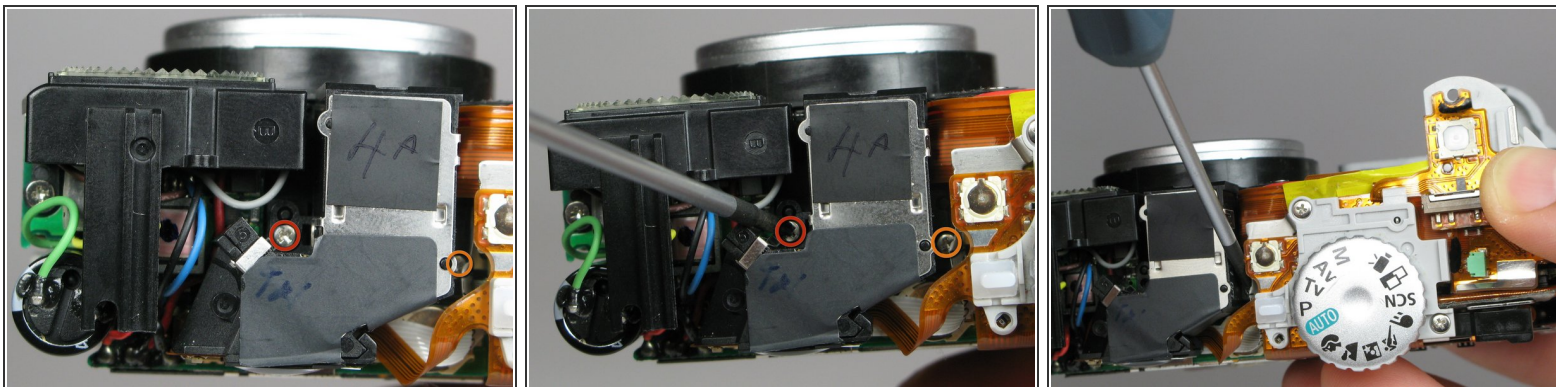
- On the front of the camera, press the button on the lower left of the lens.
- Twist the outer lens casing counter-clockwise and slide it out.

## Step 14



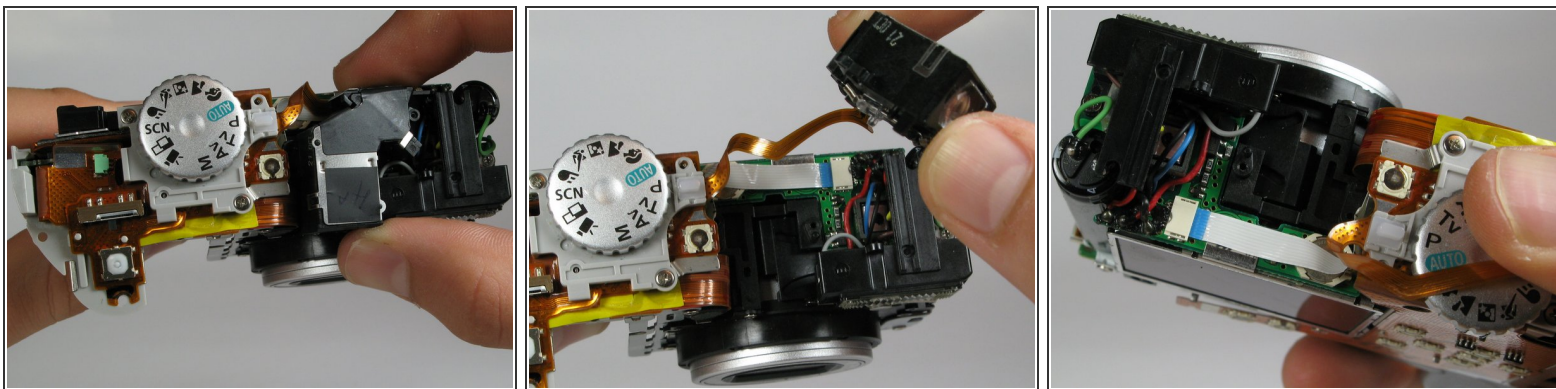
- Take off the front casing.
- ☑ There is a black rubber washer around the lens that comes out after you take the casing off. Make sure to replace it when putting the camera back together.

## Step 15 — LCD Screen



- Remove the 4.4mm screw directly behind the eyepiece on the top of the camera.
- Remove the 4.3mm screw to the right of the eyepiece housing in the crack in between the eyepiece and a ribbon cable on top of the camera.

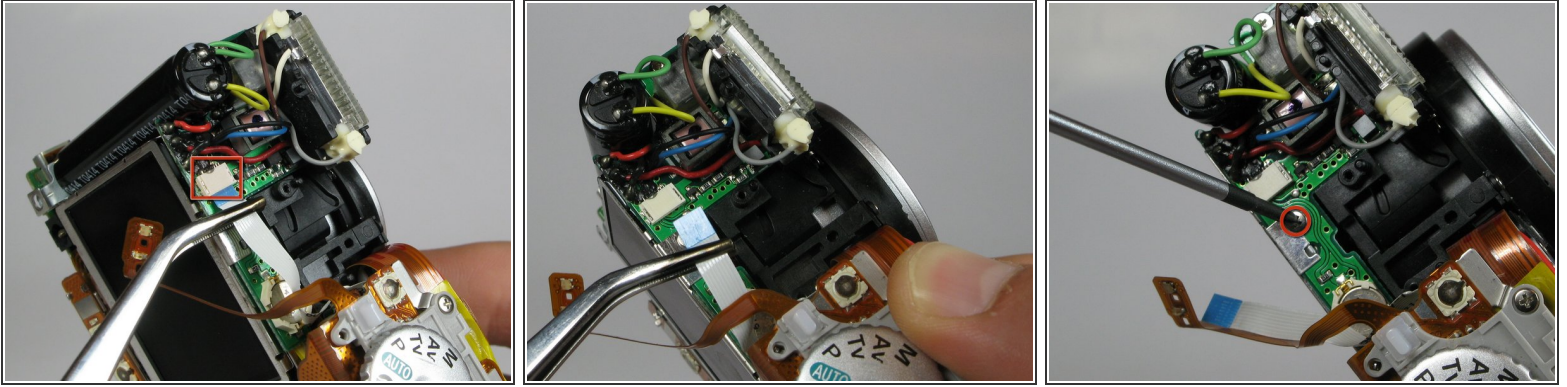
## Step 16



- Gently wiggle the eyepiece out of its place. It should snap out of place.
- ⓘ There should be a white ribbon cable underneath attached to the motherboard.



## Step 17



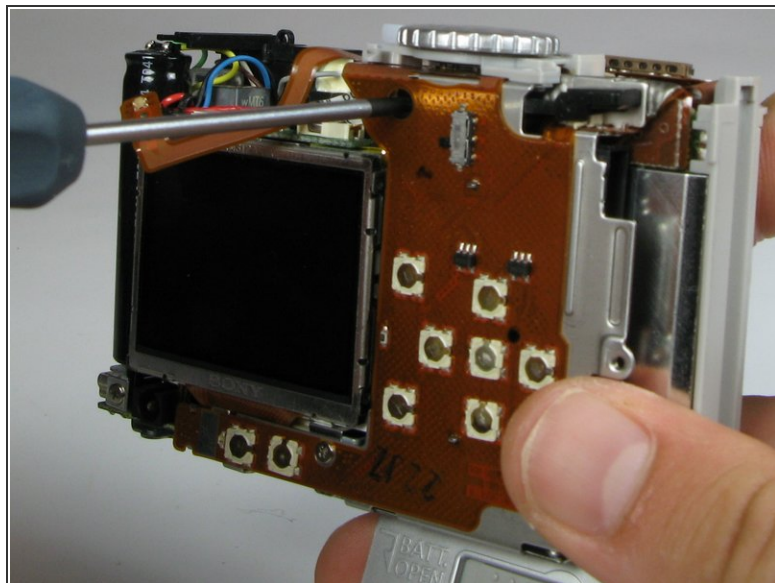
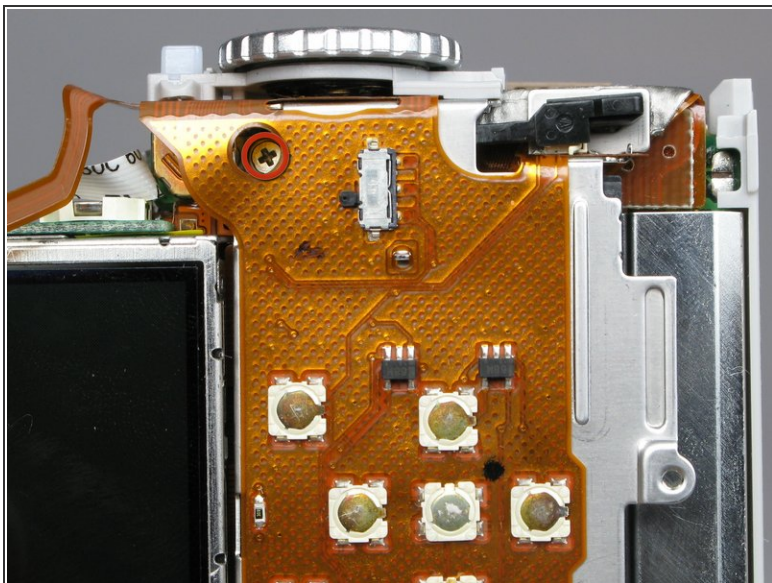
- Locate the white cable on top of the camera where the eyepiece was.
- Using tweezers, grasp the white cable as close to the connection point as possible and gently remove the cable.
  - ⓘ The cable should just slide out with a slight tug.
- Remove the 2.9mm screw directly underneath the white cable.

## Step 18



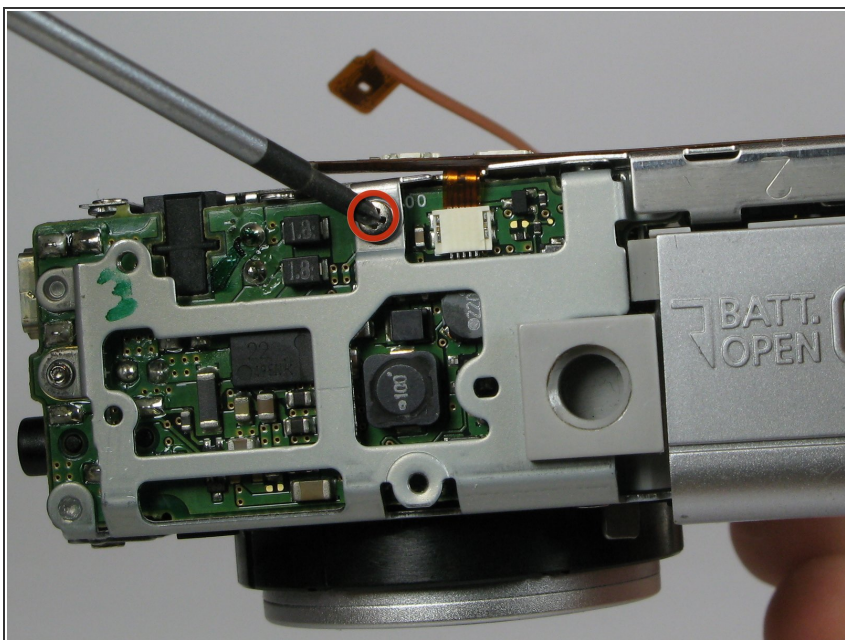
- Remove the 4.2mm screw directly under the battery flap.

## Step 19



- Remove the 3.4mm screw inside a deep hole on the back copper panel beneath the circular mode dial.
- ⓘ This screw is a little difficult to get out.

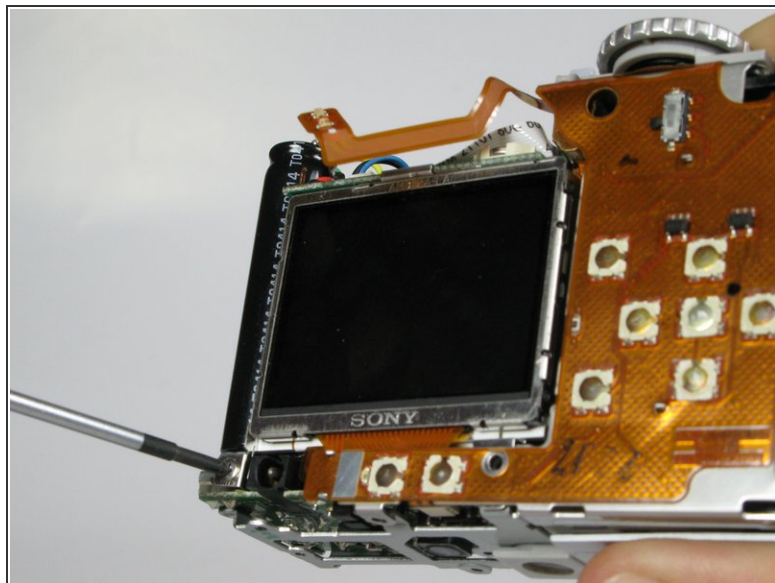
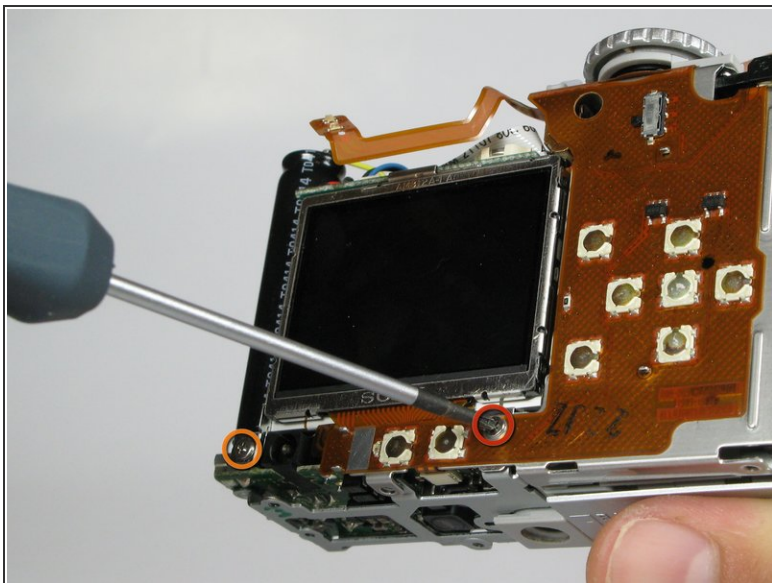
## Step 20



- Remove 2.5mm the screw in the silver housing on the bottom of the camera. This screw is holding the back panel in.

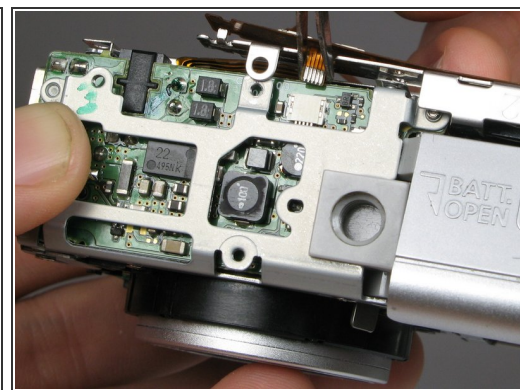
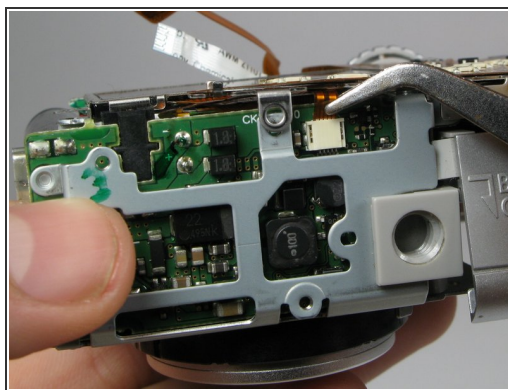
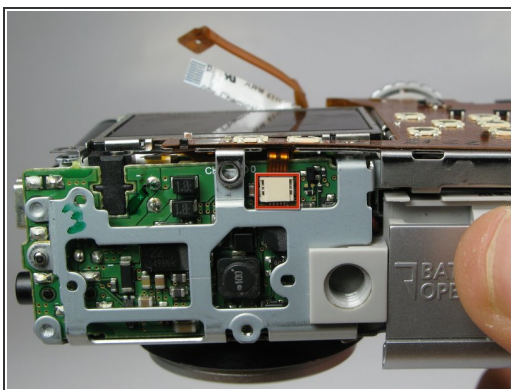


## Step 21



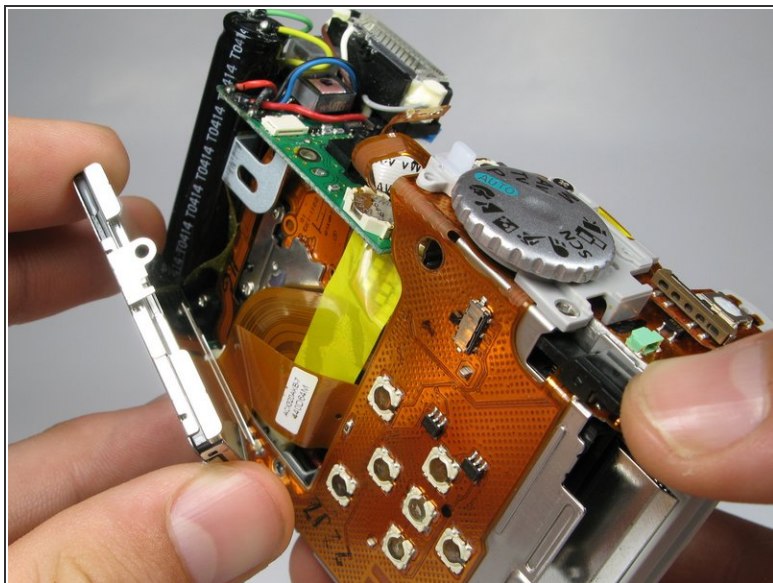
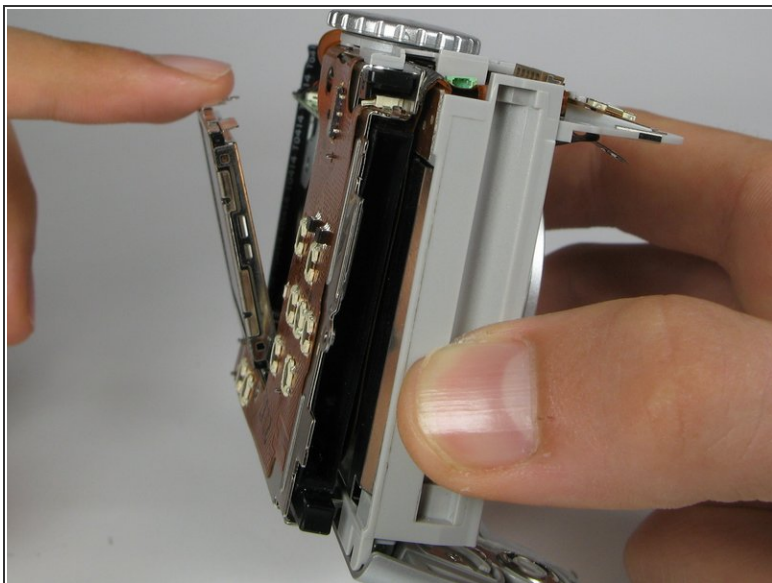
- Remove the 3.4mm screw near the bottom of the back face of the camera on the copper ribbon.
- Remove the 2.9mm screw on the back face of the camera in the bottom left corner.

## Step 22



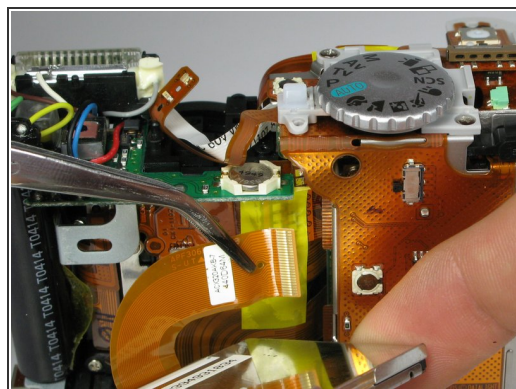
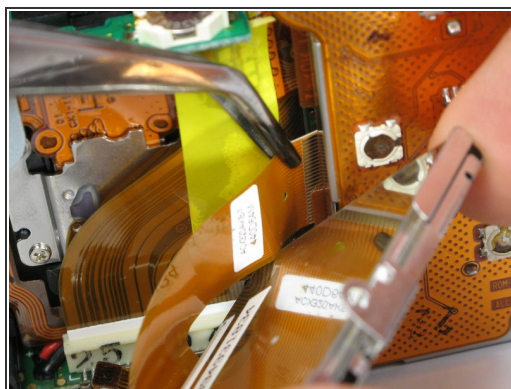
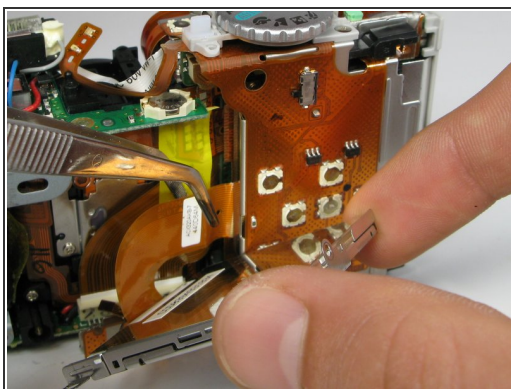
- Locate the copper ribbon cable attaching the LCD screen to the bottom motherboard.
- Grasp the cable near the white connector and gently remove the cable.

## Step 23



- Gently pull back the LCD screen to around 45 degrees from the back of the camera.
  - ⚠ Do not pull the back panel too far, it is connected to the top of the camera with ribbon cables and is not meant to separate from the camera.
- Locate the larger ribbon cable connecting the screen to the body of the camera.

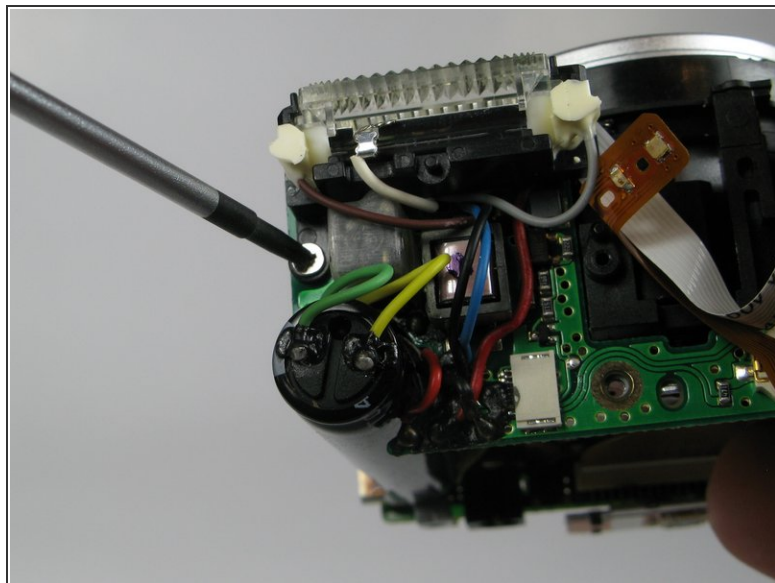
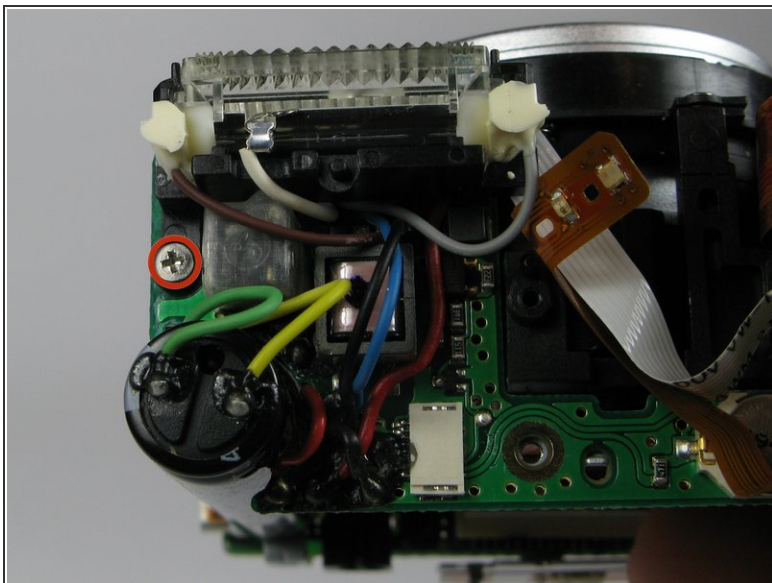
## Step 24



- Gently grasp and pull the cable from the motherboard. The cable should easily slide out.
  - ⓘ This ribbon cable may be easier to remove using your hands instead of the tweezers.
- The LCD should now be out after the cable is removed.

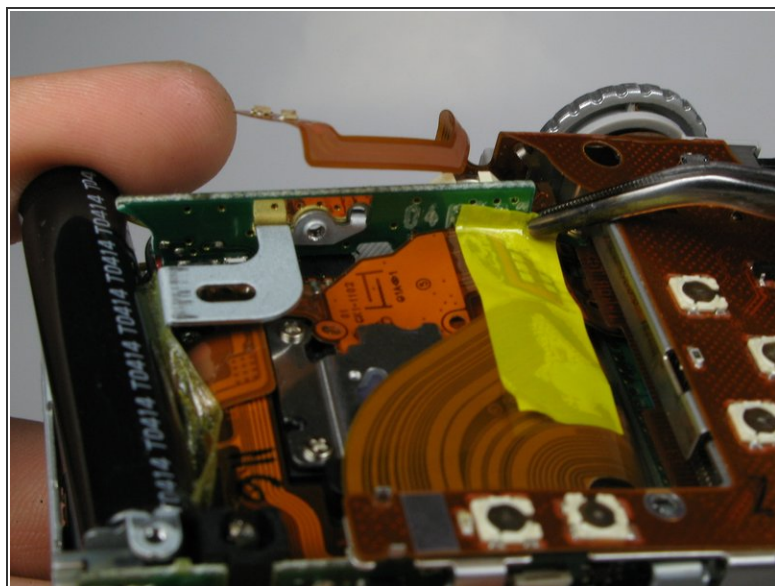
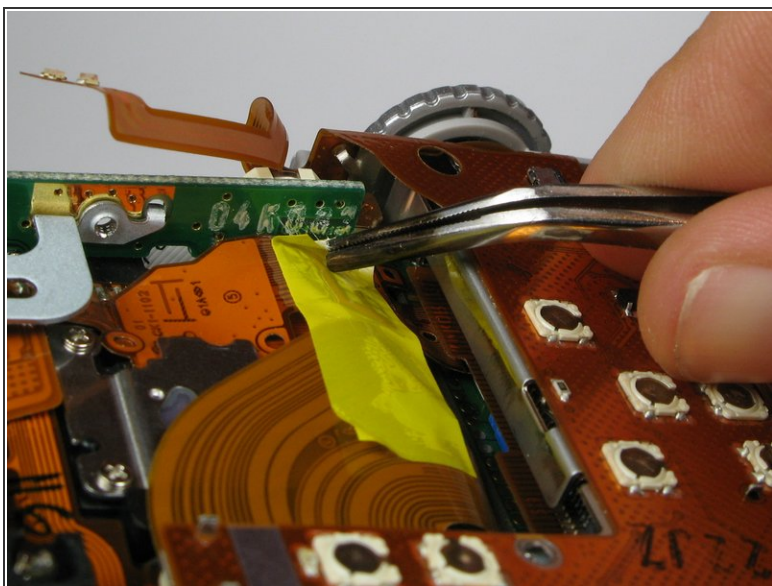


## Step 25 — Motherboard/Capacitor



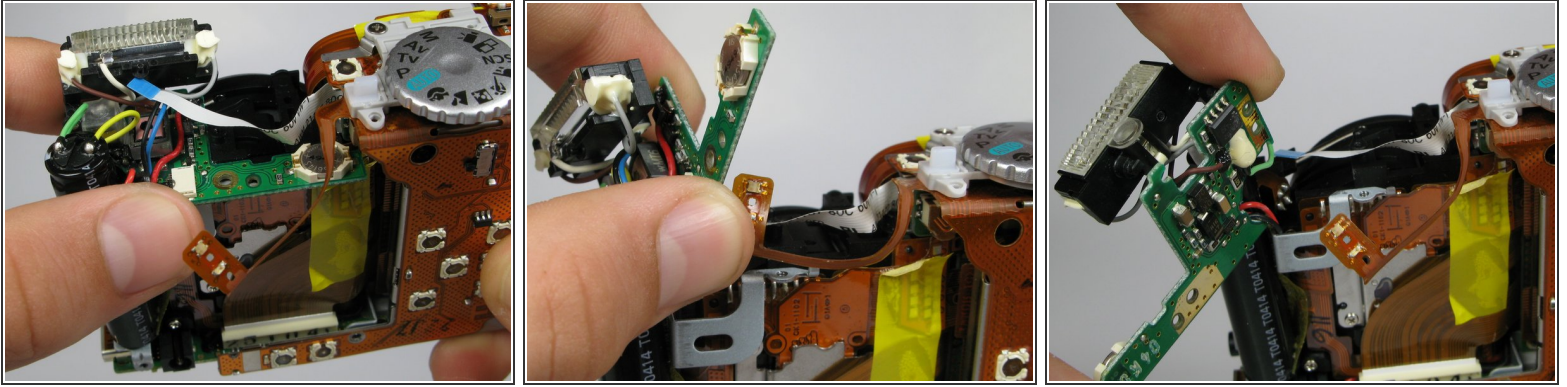
- Remove the 3.5mm screw found near the capacitor and the flash unit.

## Step 26



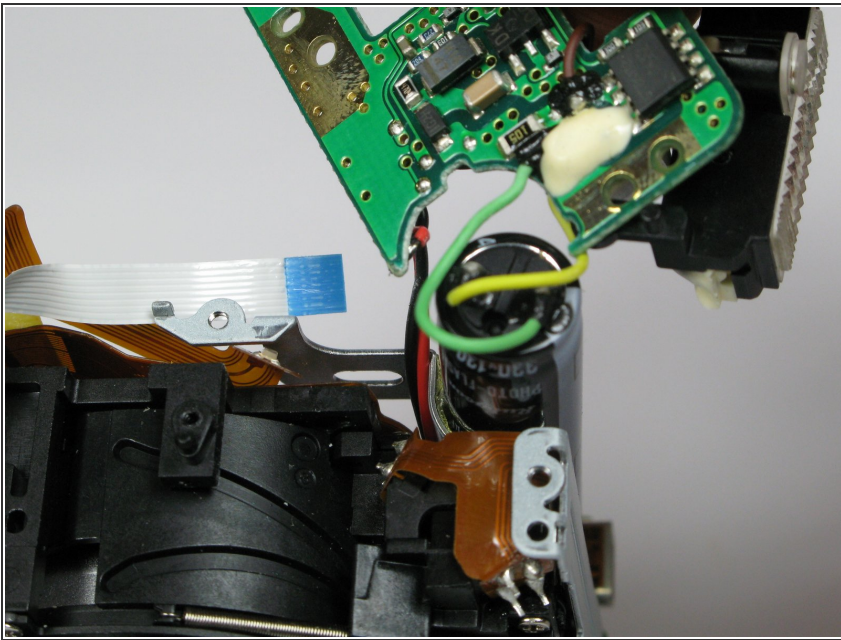
- Carefully remove the yellow piece of adhesive tape connected to the motherboard.

## Step 27



- Remove the main motherboard from the casing, which is connected to the flash unit, capacitor, and bottom motherboard.
- ⚠ Do not damage or remove the cables connected to the motherboard. The motherboard is connected to the bottom motherboard by two wires. There are also two red wires on the outside of the motherboard.

## Step 28



- ⚠ Do not proceed to the next step unless you have previous soldering experience because you can



---

damage the motherboard if you are not careful.

- Unsolder any remaining wires on the motherboard to completely remove it.
- 

To reassemble your device, follow these instructions in reverse order.