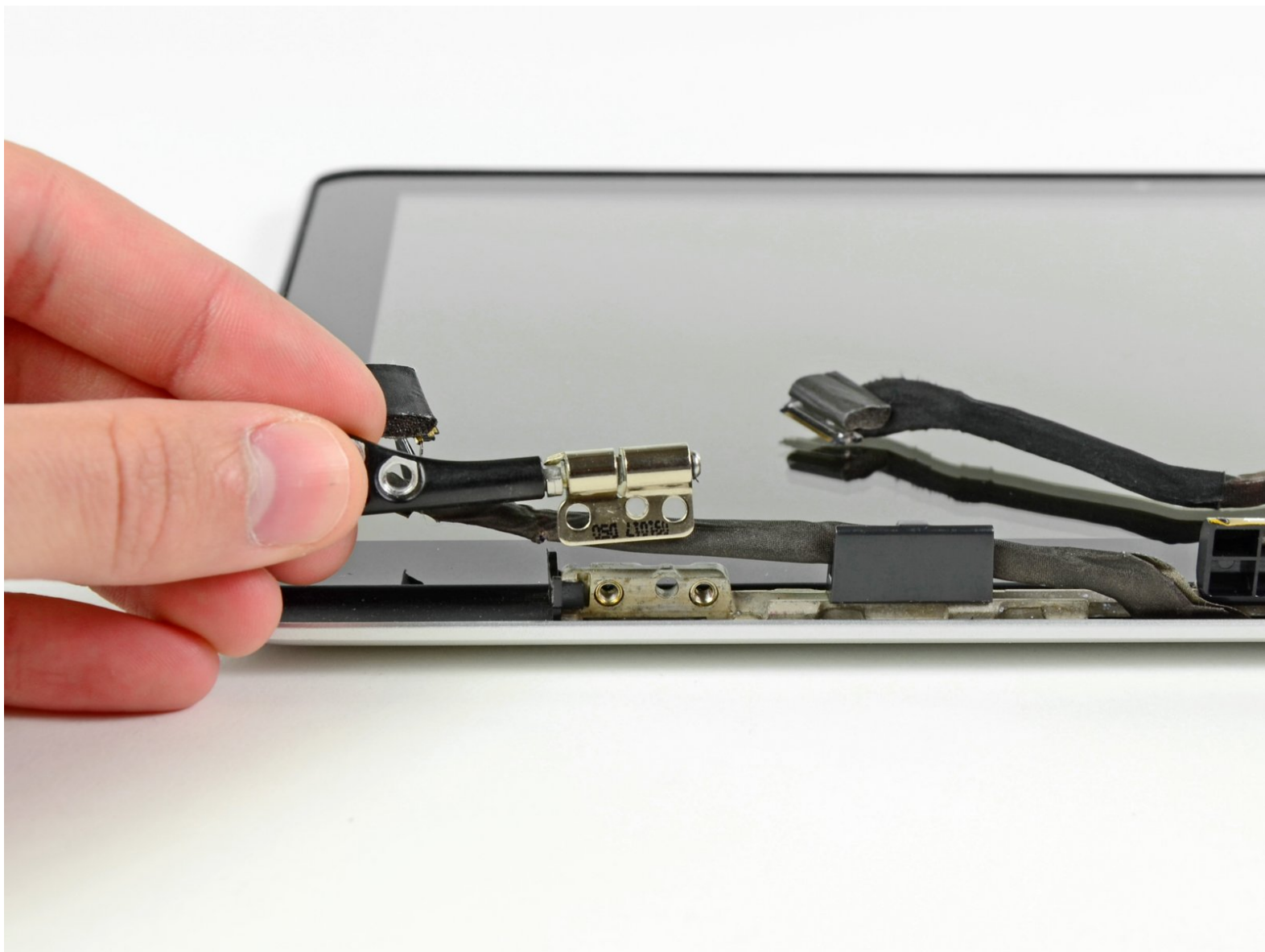




# MacBook Unibody Model A1278 Left Clutch Hinge Replacement

Replace the left clutch hinge in your MacBook Unibody Model A1278.

Written By: Walter Galan



# INTRODUCTION

Use this guide to replace a broken left clutch hinge.



## TOOLS:

- [Phillips #00 Screwdriver](#) (1)
- [Spudger](#) (1)
- [T6 Torx Screwdriver](#) (1)



## PARTS:

- [MacBook Unibody \(Model No. A1278\)](#)  
[Left Clutch Hinge](#) (1)

## Step 1 — Access Door



- With the case closed, place the Unibody top-side down on a flat surface.
- Depress the grooved side of the access door release latch enough to grab the free end. Lift the release latch until it is vertical.

## Step 2



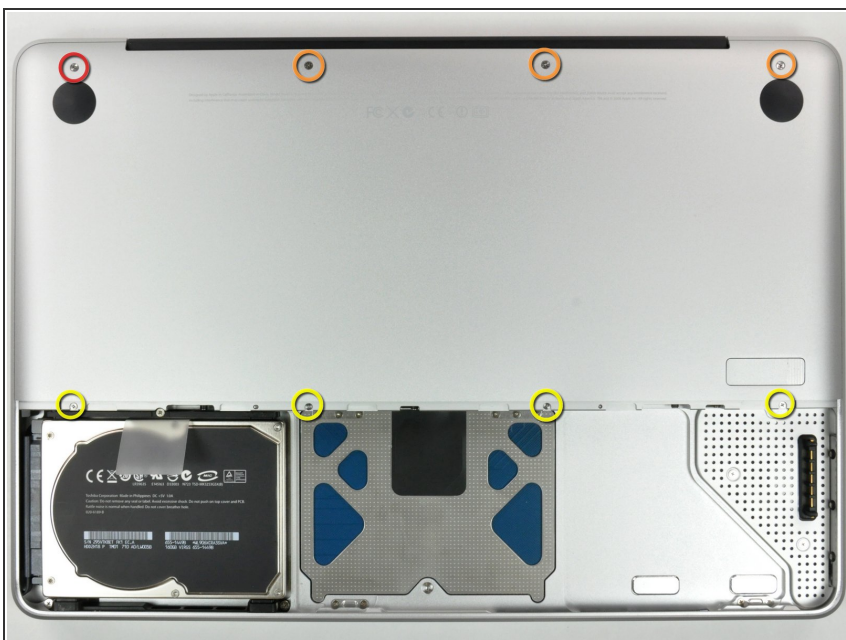
- The access door should now be raised enough to lift it up and out of the Unibody.

## Step 3 — Battery



- ❗ Be sure the access door release latch is vertical before proceeding.
- Grab the white plastic tab and pull the battery up and out of the Unibody.

## Step 4 — Lower Case



- Remove the following eight screws securing the lower case to the chassis:
  - One 3 mm Phillips screw.
  - Three 13.5 mm Phillips screws.
  - Four 3.5 mm Phillips screws.



## Step 5



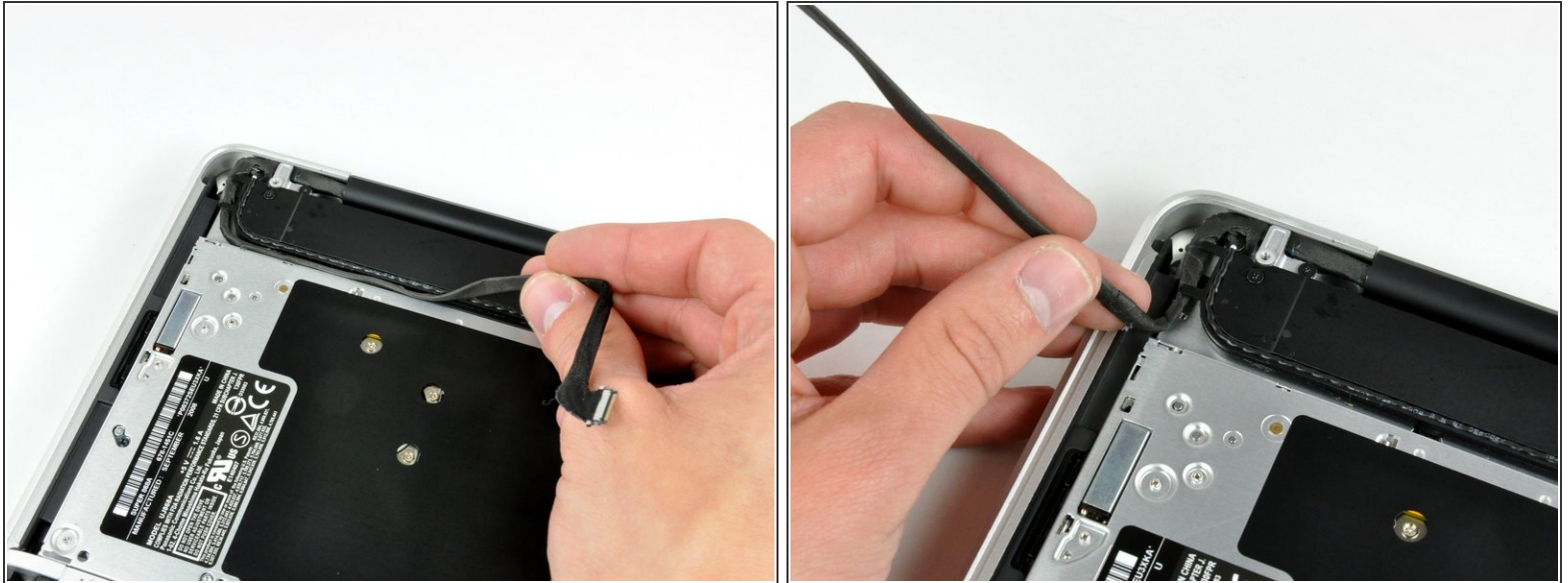
- Using both hands, lift and remove the lower case off the upper case.

## Step 6 — Display Assembly



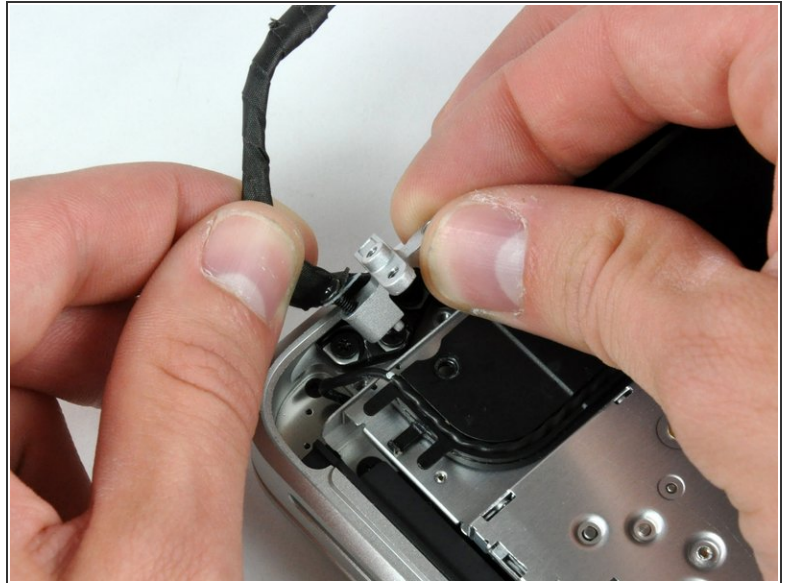
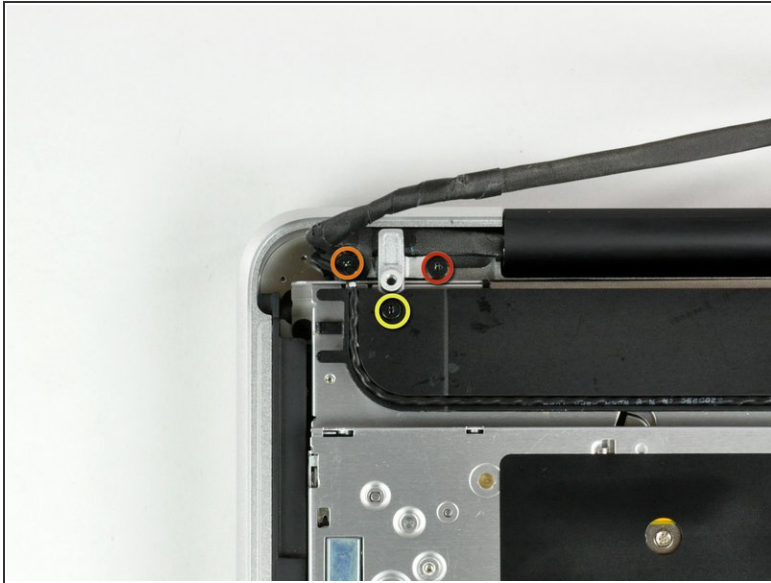
- Disconnect the camera cable by pulling the male end straight away from its socket.
- ⚠ Be careful not to pull up on the cable as you remove it from the socket.

## Step 7



- De-route the camera data cable from the channel in the optical drive.

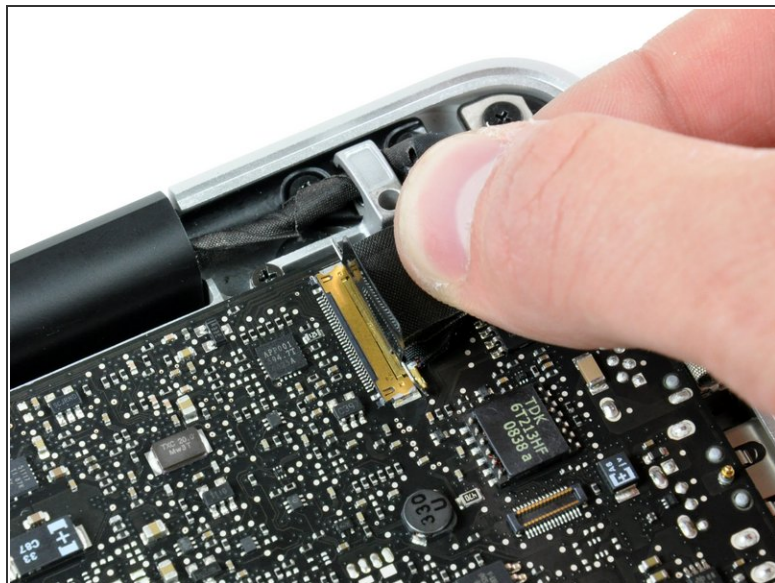
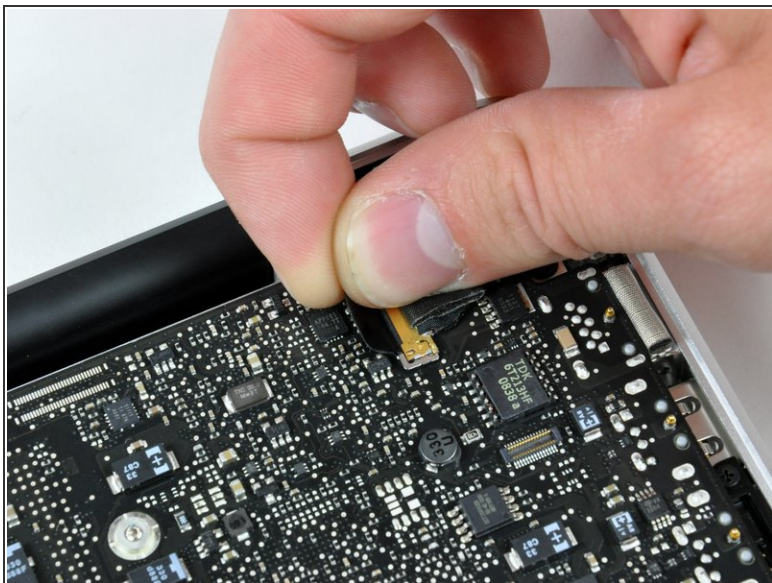
## Step 8



- Remove the following screws securing the camera data cable and right speaker to the upper case:
    - One 9.9 mm partially threaded Phillips screw
    - One 9.6 mm threaded Phillips screw
    - One 4 mm Phillips screw
  - Slide the camera cable bracket out from under the subwoofer and remove it from the computer.
- i** The iSight cable has an eyelet through which passes the left-most screw in these pictures.



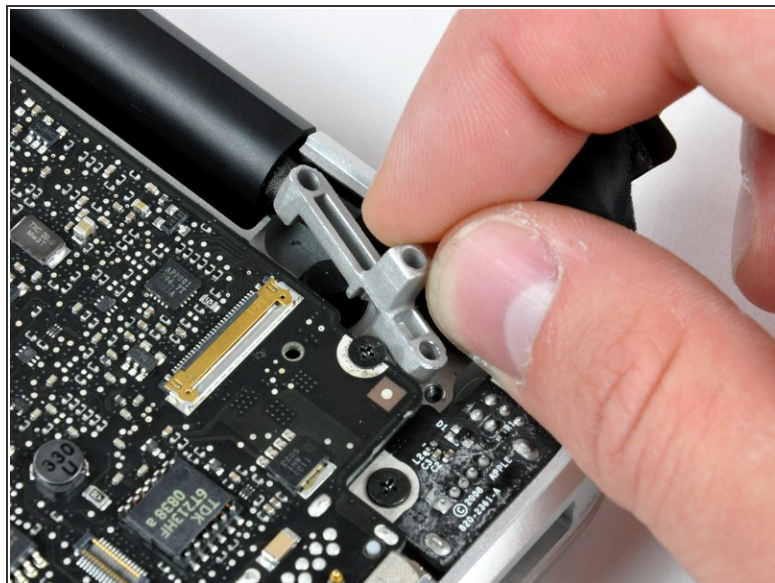
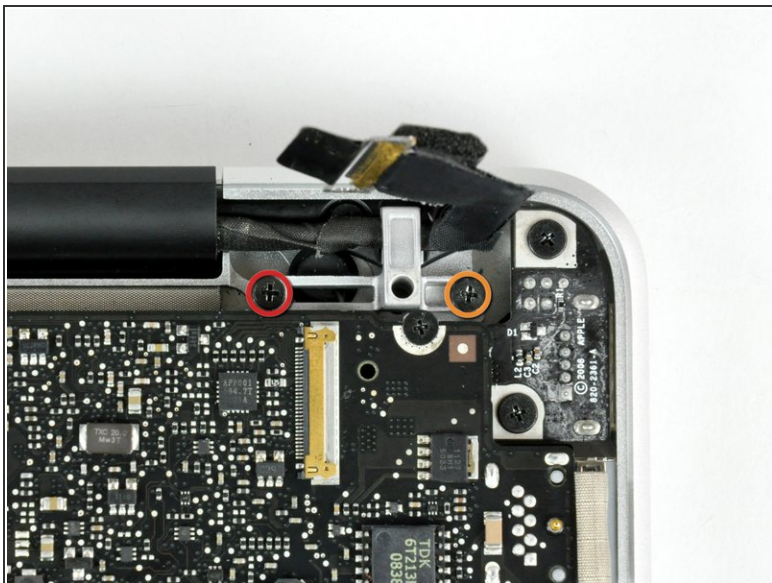
## Step 9



- Grab the plastic pull tab secured to the display data cable lock and rotate it toward the DC-in side of the computer.
- Pull the display data cable connector straight away from its socket.
- ⓘ Make sure to pull the connector straight away and not straight up from its socket.



## Step 10



- Remove the following two screws from the display data cable bracket:
  - One 7 mm Phillips screw.
  - One 5 mm Phillips screw.
- Lift the display data cable bracket out of the upper case.

## Step 11



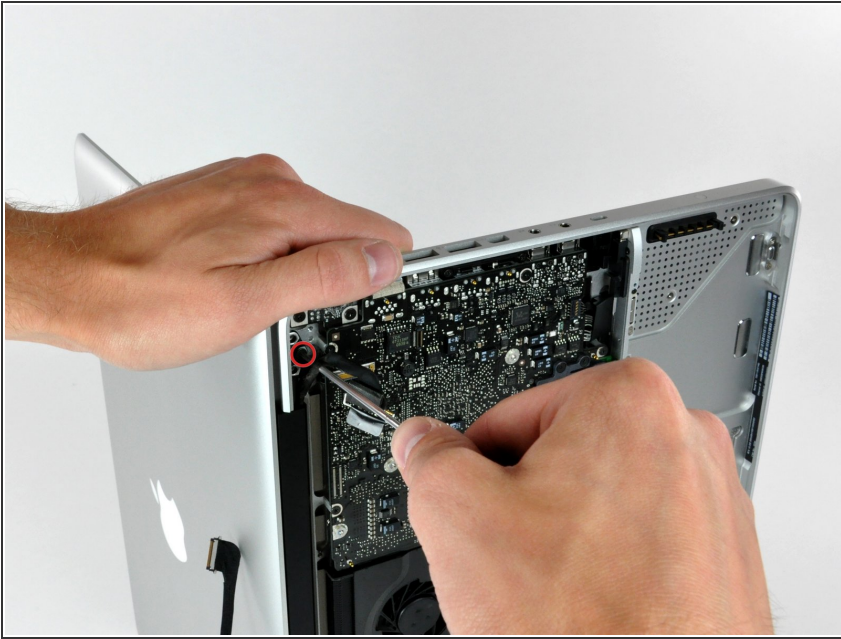
- Remove the two outer 6 mm Torx screws securing each side of the display to the upper case (4 screws total).


## Step 12



- Open your MacBook so the display is perpendicular to the upper case.
- Place your opened MacBook on a table as pictured.
- While holding the display and upper case together with your left hand, remove the 6 mm Torx screw from the lower display bracket.

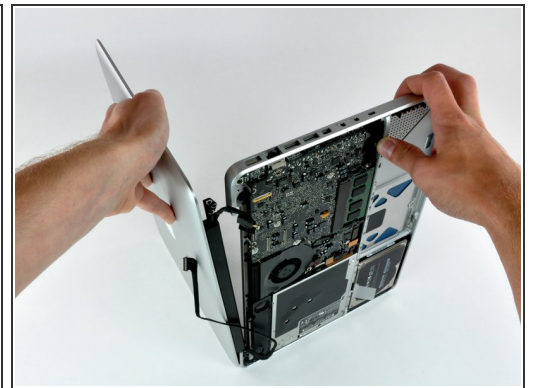
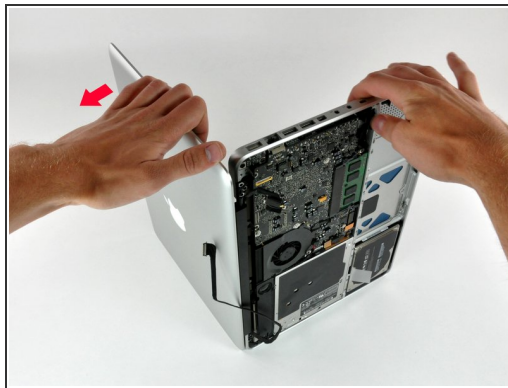
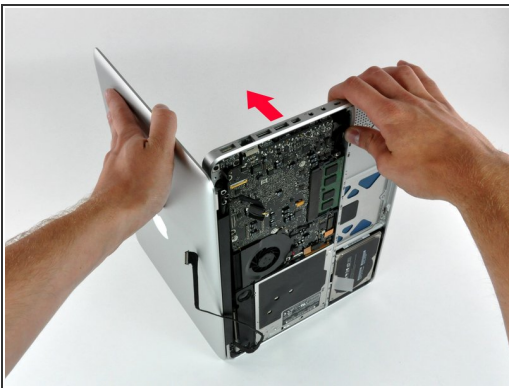
## Step 13



 Be sure to hold the display and upper case together with your left hand. Failure to do so may cause the freed display/upper case to fall, potentially damaging each component.

- Remove the last remaining 6 mm Torx screw securing the display to the upper case.

## Step 14



- Grab the upper case with your right hand and rotate it slightly toward the top of the display so the upper display bracket clears the edge of the upper case.
- Rotate the display slightly away from the upper case.
- Lift the display away from the upper case, minding any brackets or cables that may get caught.



## Step 15 — Clutch Cover



- Grab the clutch cover as shown and slide it toward the right side of the display.

 It should move about 1/4" and stop. Don't force it beyond this point.

## Step 16



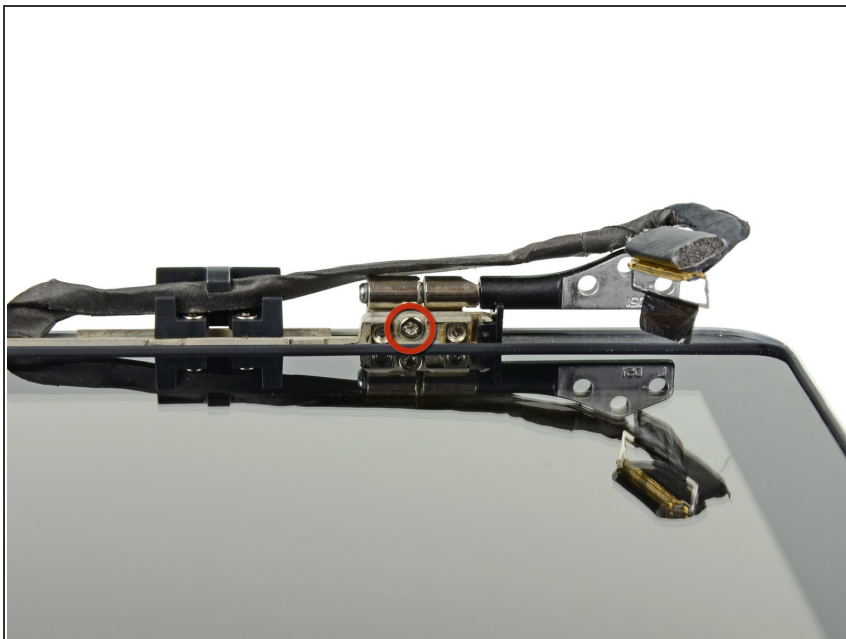
- Gently rock the clutch cover back and forth on its long axis while pulling it away from the display.
- Do this action along the length of the clutch cover until you can lift it off the framework attaching it to the display.

## Step 17



- Remove the clutch cover from the display.

## Step 18 — Left Clutch Hinge



- Remove the single 5.2 mm T6 Torx screw securing the left clutch hinge nearest the display glass.

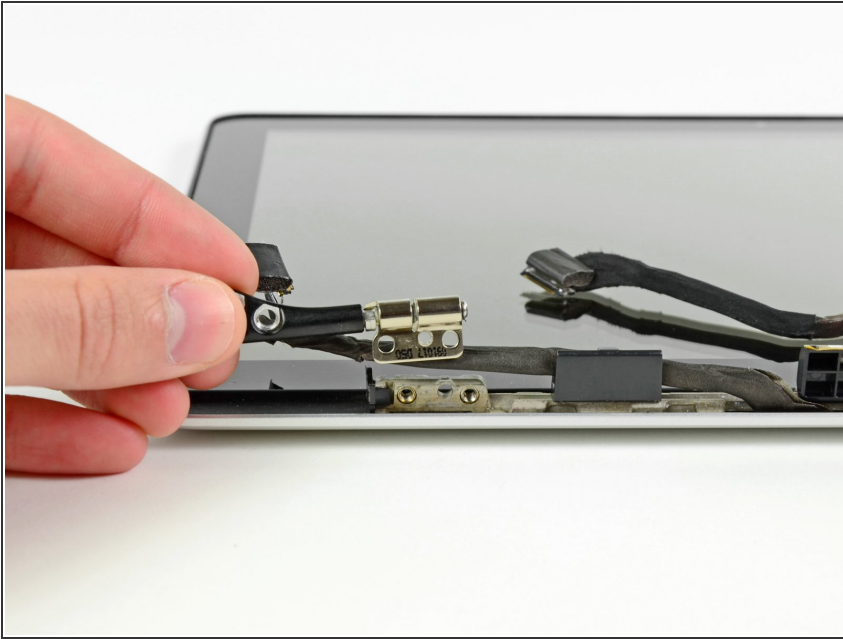
## Step 19



- Remove the remaining two 5.2 mm T6 Torx screws securing the left clutch hinge to the display.



## Step 20



- Remove the left clutch hinge from the display.

To reassemble your device, follow these instructions in reverse order.