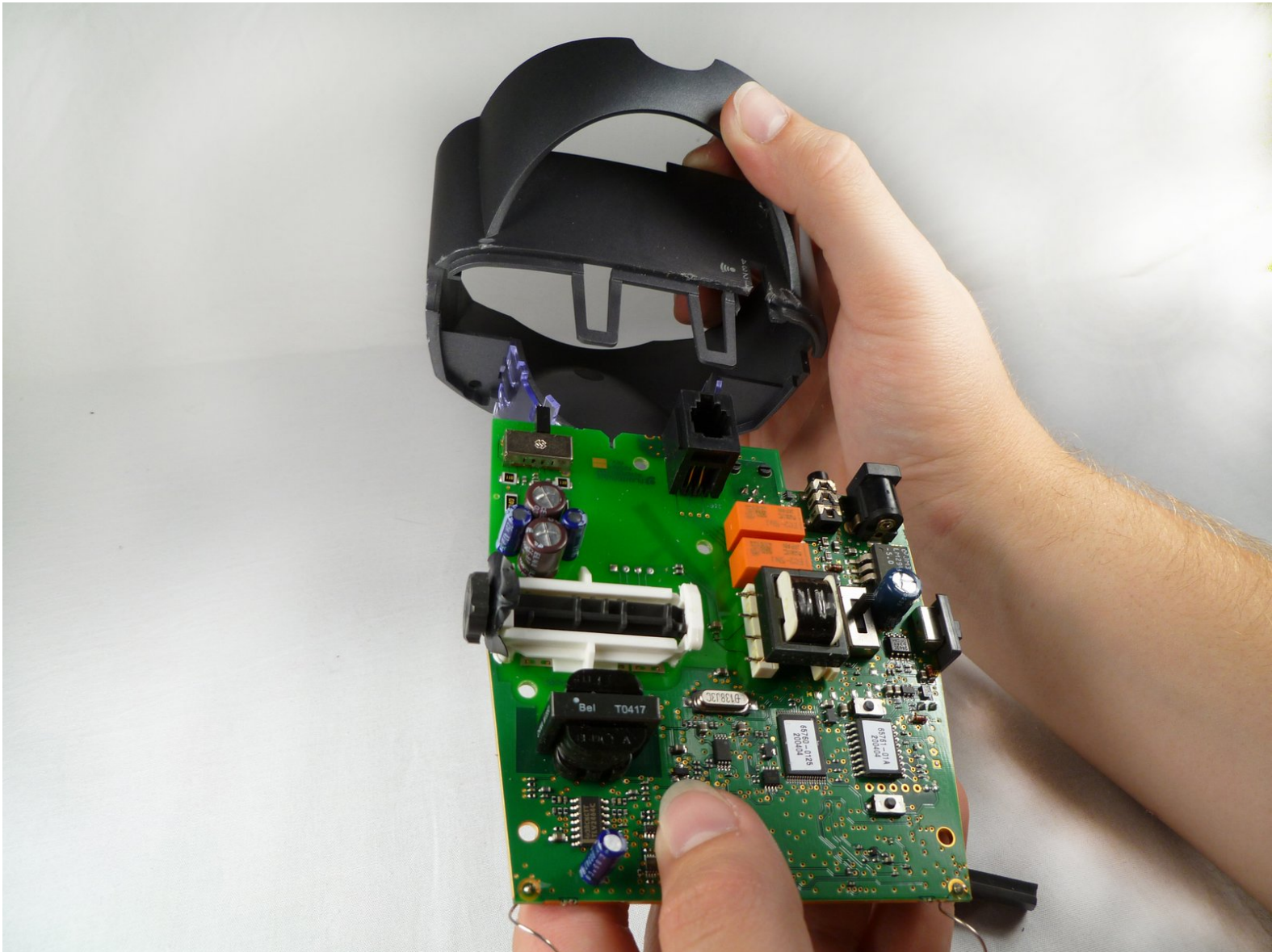




Plantronics CS50 Headset Motherboard of the Base Unit Replacement

Replace the a dead base unit motherboard.

Written By: Bryan Clark



INTRODUCTION

Use this guide to replace your base unit's motherboard.



TOOLS:

- [Phillips #0 Screwdriver](#) (1)
-

Step 1 — Motherboard of the Base Unit



- Flip over the base unit to reveal the bottom.

Step 2



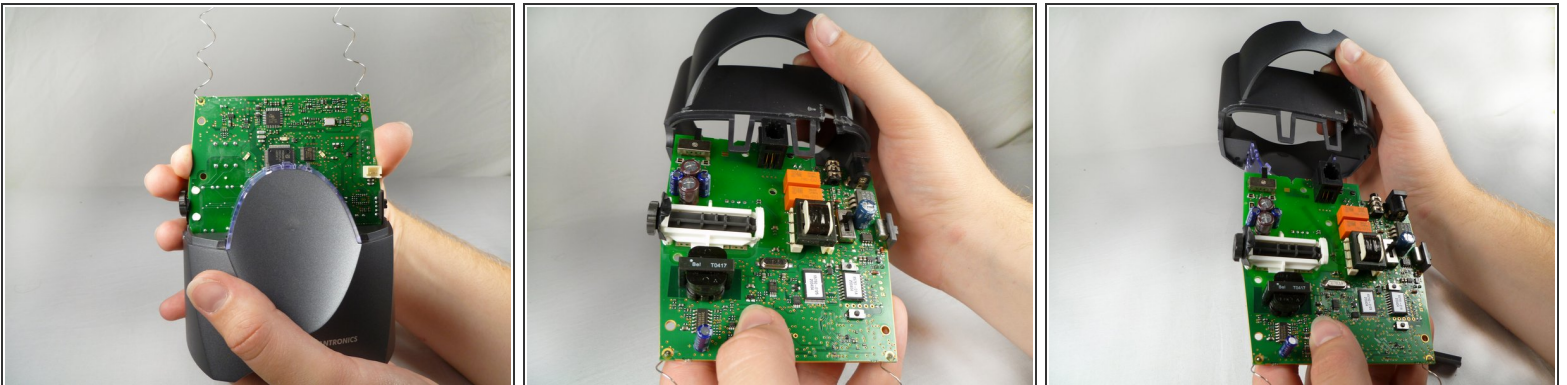
- Using a #0 screwdriver, remove the two 2.50mm screws.

Step 3



- Separate, but do not remove, the silver upper piece from the dark lower piece.
- Carefully disconnect the wires from the motherboard.
- Remove the silver top of the base.

Step 4



- Remove the motherboard from the base

To reassemble your device, follow these instructions in reverse order.