



Altec Lansing BoomJacket Power Button Replacement

This replacement guide for the Altec Lansing BoomJacket will give step by step information about how to replace and repair your power button.

Written By: Ryan Byrnes



INTRODUCTION

Will your device not turn on or off? Your power button is likely the reason.



TOOLS:

- [Phillips #0 Screwdriver](#) (1)
- [Phillips #1 Screwdriver](#) (1)
- [Metal Spudger](#) (1)
- [Tweezers](#) (1)



PARTS:

- [Rubber casing](#) (1)
- [Screws](#) (16)
- [Metal Backing](#) (1)
- [Metal Fronting](#) (1)
- [Plugs](#) (6)

Step 1 — Case Removal



- Using your hands, remove the pegs (4+4) from the front and back of the speaker.

Step 2



- Remove the outer black rubber housing of the speaker.

Step 3



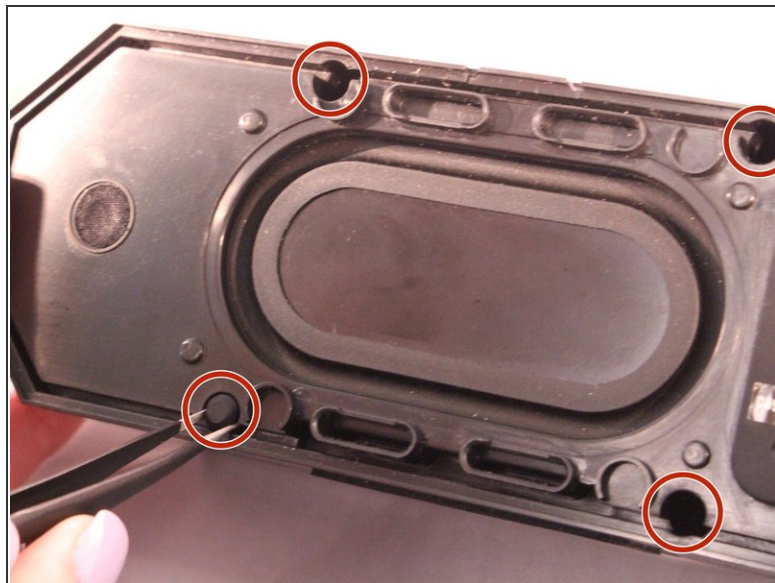
- Remove the inner blue rubber housing from the speaker.

Step 4



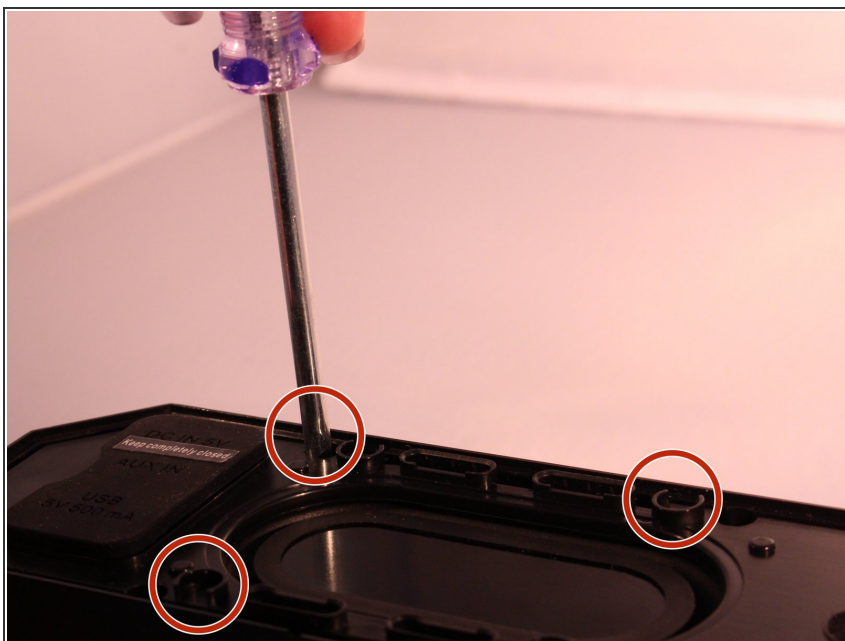
- Pull out the two black wire meshes using a metal spudger.
- ⚠ Be careful not to damage the metal casing.

Step 5



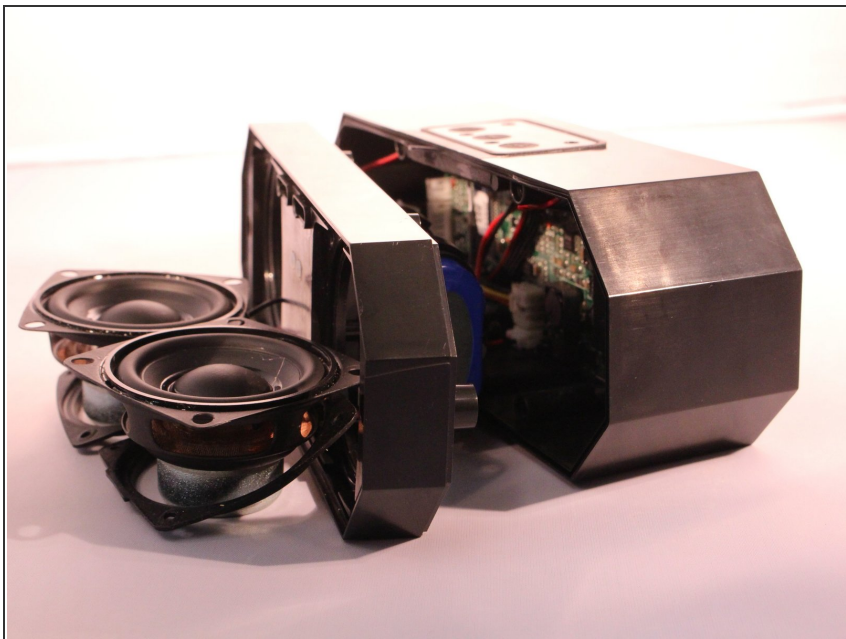
- Using tweezers remove the rubber stoppers (4 at the back + 2 at the front).

Step 6



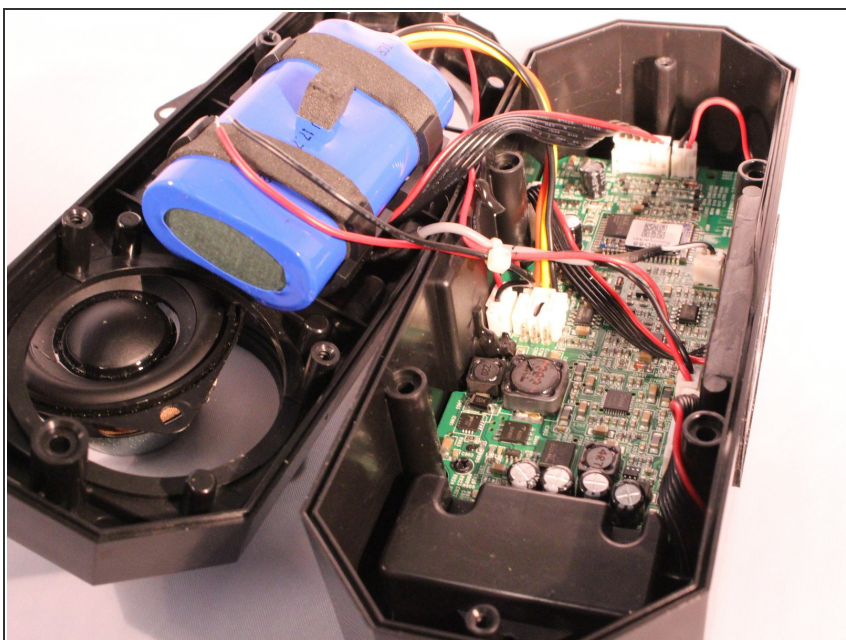
- Using the size PH1 screwdriver remove the screws exposed from the rubber stoppers (4 + 2).

Step 7



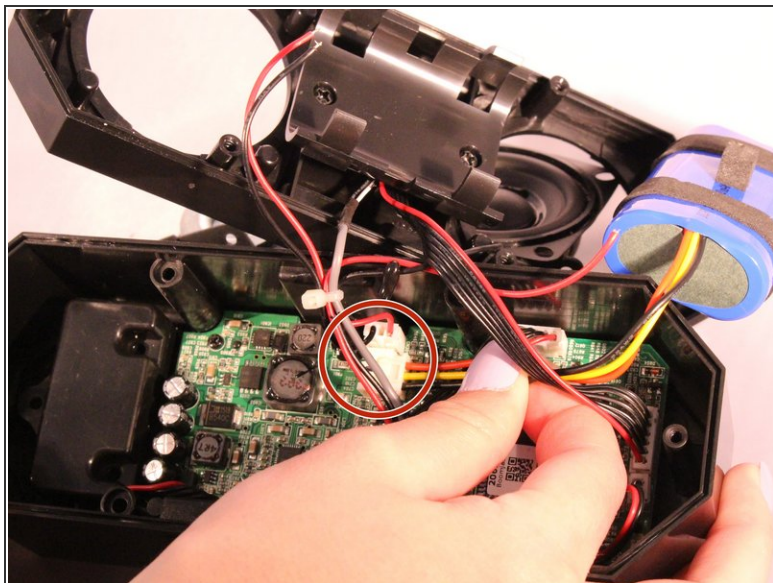
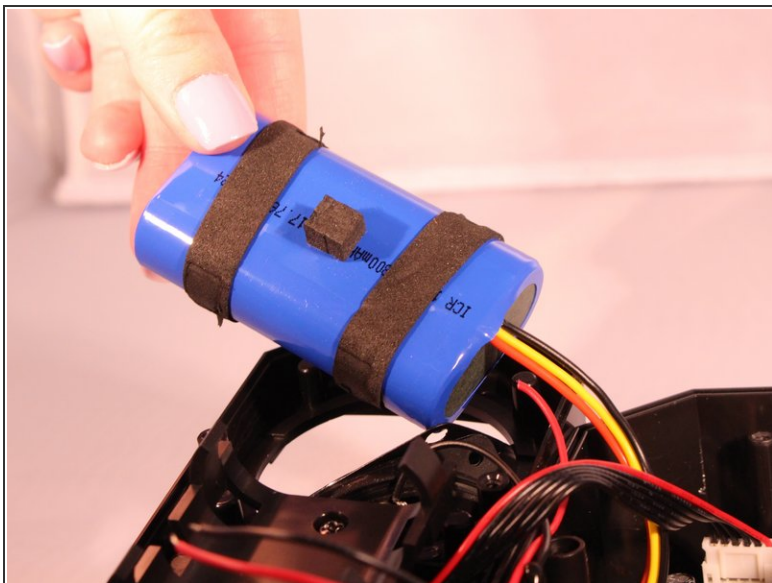
- Pull the case apart and you will be able to see all the components inside the speaker.

Step 8 — Power Button



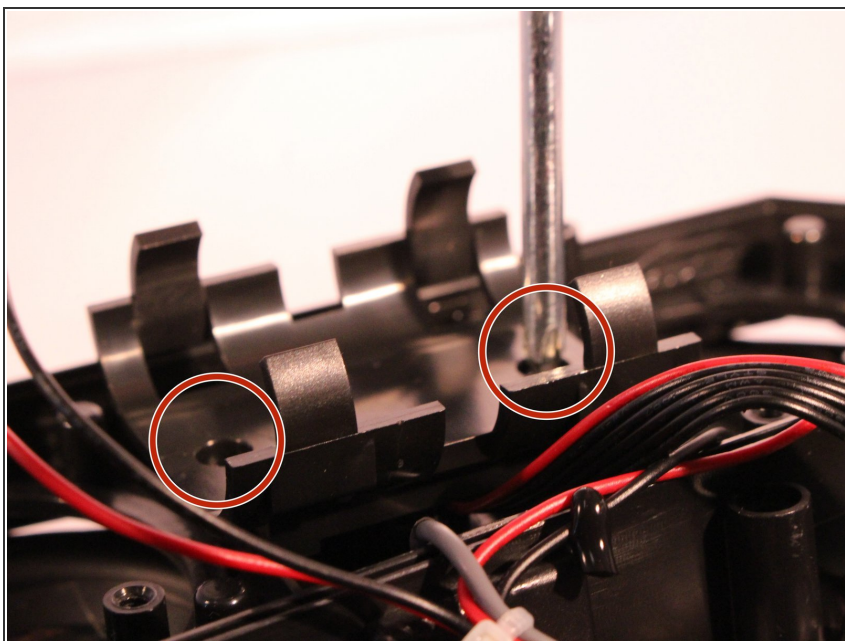
- The battery will be sitting right behind the speakers when the case is open.

Step 9



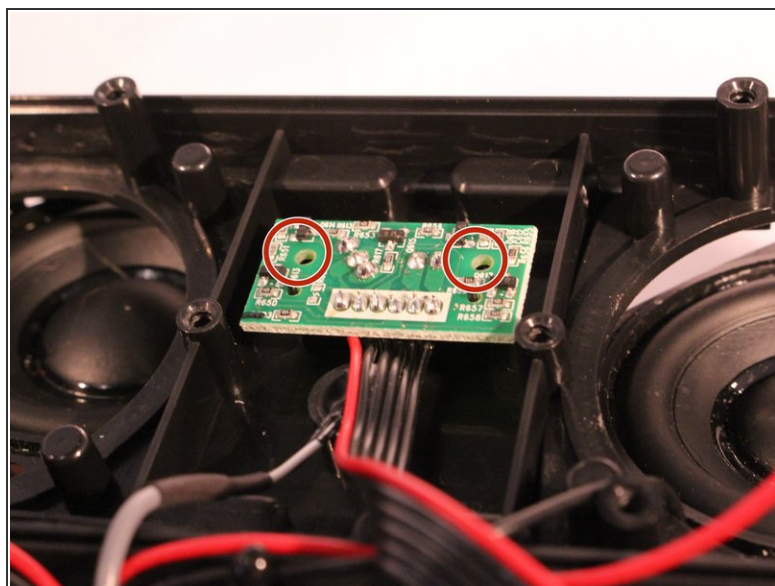
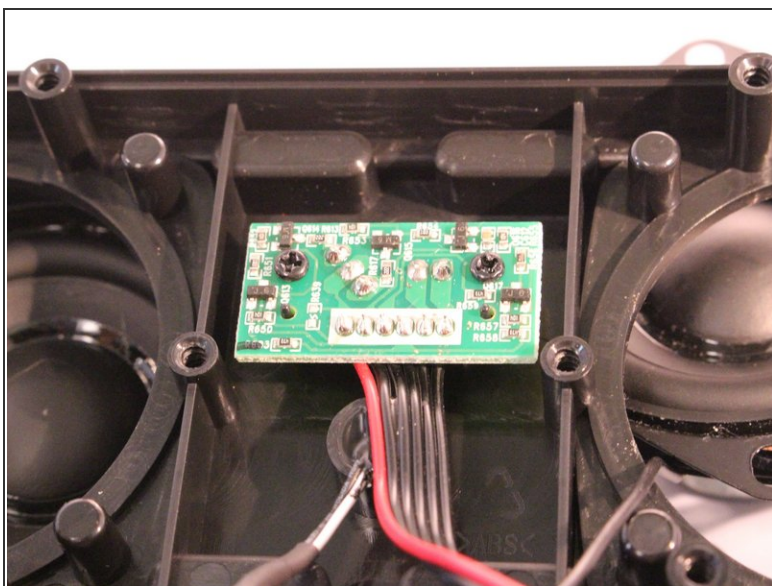
- Unplug and disconnect the battery from the motherboard.

Step 10



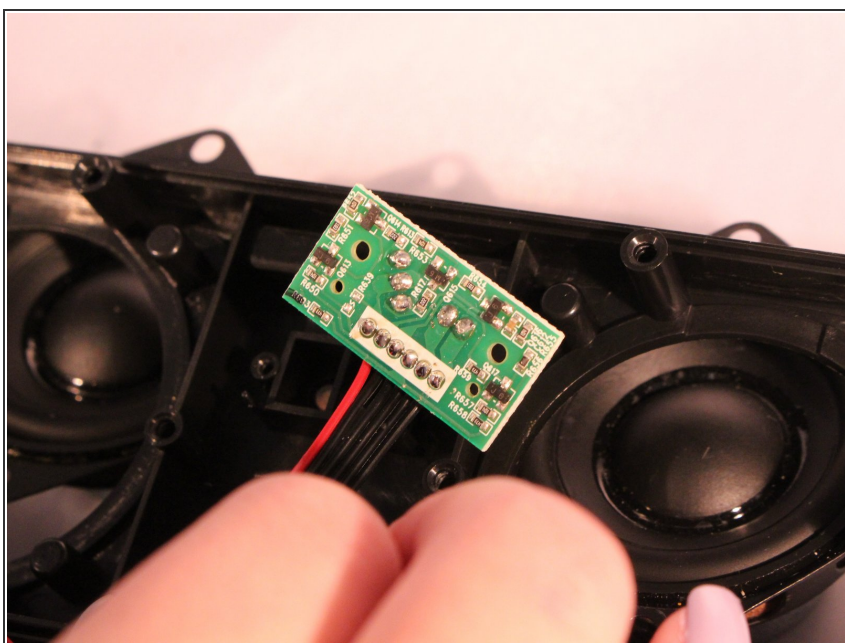
- Using a size PH1 screwdriver, remove the two screws.

Step 11



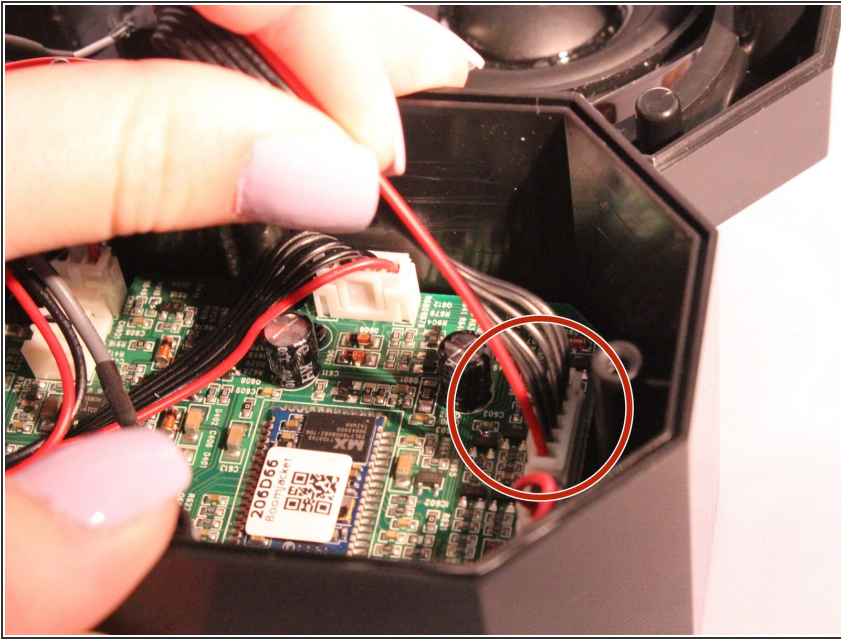
- You will now see the motherboard for the power button.
- Remove the 2 screws holding the motherboard into place.

Step 12



- Pick up the motherboard and take it out of the slot.

Step 13



- Disconnect the power button motherboard from the speaker motherboard.

To reassemble your device, follow these instructions in reverse order.