



HP Chromebook 11 G3 Display Assembly Replacement

Remove the Display Assembly of the HP Chromebook 11 G3.

Written By: Rahul Goyal



INTRODUCTION

Use this guide to remove the display assembly of the HP Chromebook 11 G3.



TOOLS:

- [iFixit Opening Tools](#) (1)
- [Tweezers](#) (1)
- [Phillips #00 Screwdriver](#) (1)
- [Spudger](#) (1)



PARTS:

- [HP Chromebook 11 G3/G4 Display Hinge Set](#) (1)

Step 1 — Keyboard Mount



- Flip the laptop upside down so that the lid lies flat on the table.
- Remove the nine 6mm Phillips #00 screws that line the border.

Step 2



- Remove the two rubber feet closest to the hinge using tweezers.
- Remove the two 6mm Phillips #00 screws revealed under these rubber feet.
- i* The rubber feet may tear while removal; preventing this can be difficult, but it won't harm the laptop. If desired, replace these rubber feet during reassembly.

Step 3



- Flip the laptop so it is in the upright position.
- Open the lid.
- Unsnap the keyboard mount along the border of the laptop using a plastic opening tool.
- i* This may require more force than expected. Hearing loud clicks as the plastic opening tool slides along the seam is normal.

Step 4



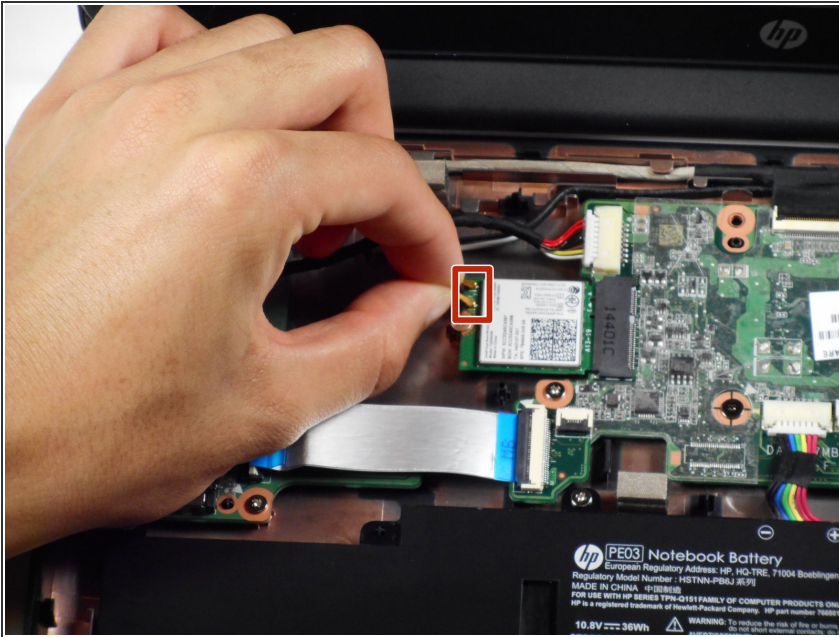
- Tilt the keyboard mount up.
- Use a spudger to flip up the two ZIF connector retaining flaps for the ribbon cables that connect the keyboard mount to the motherboard.
- Gently remove both ribbon cables.

Step 5



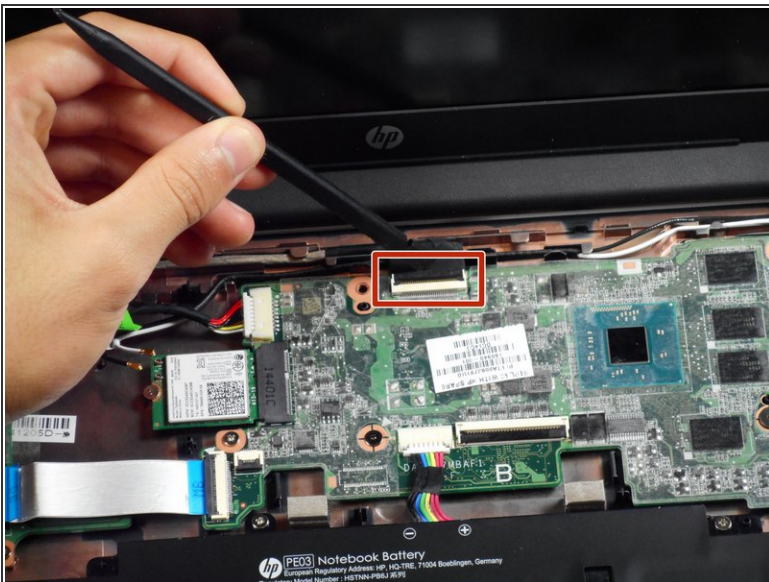
- Lift the keyboard mount out of the laptop.

Step 6 — Display Assembly



- Gently tug on the black and white wires connected to the Wi-Fi module to disconnect them.

Step 7



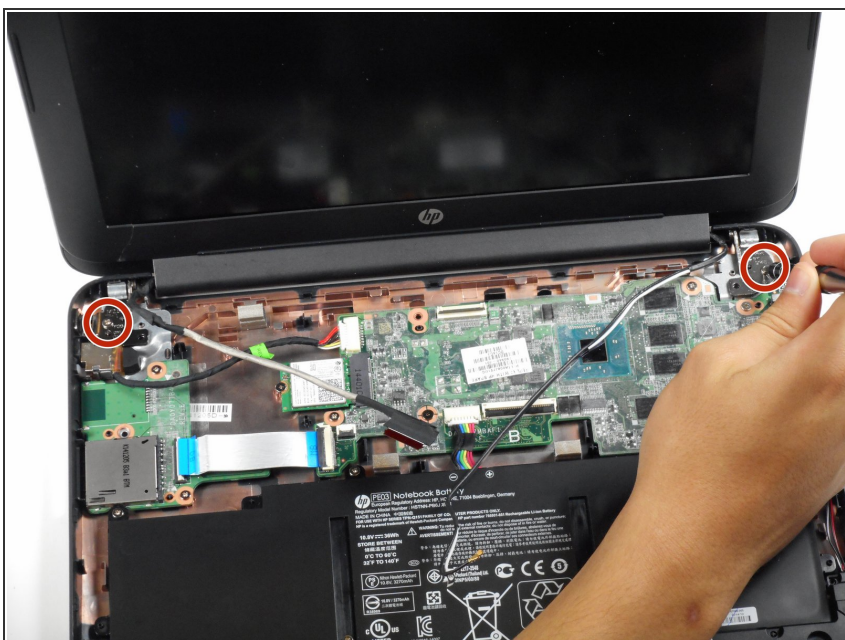
- Using a spudger, lift the ZIF retaining flap that secures the display's ribbon cable to the motherboard.
- Gently pull the ribbon cable out of its socket.

Step 8



- Free the wire from the casing.

Step 9



- Remove the two 6mm Phillips #00 screws located near the upper left and right corners of the hinge mounts.
- ⓘ Hold the lid so that it is folded slightly inwards while removing the screws so that the lid doesn't fall.

Step 10



- Rotate the lid to a 90-degree angle with the table.
- Shimmy the lid out of the laptop.

To reassemble your device, follow these instructions in reverse order.