



# iMac Intel 27" EMC 2390 Optical Drive Replacement

If you find your optical drive in need of...

Written By: Brett Hartt



# INTRODUCTION

If you find your optical drive in need of reading glasses, it is probably time to replace it. Use this guide to replace the optical drive in the mid 2010 iMac EMC 2390.

## TOOLS:

Heavy-Duty Suction Cups (Pair) (1)

Paper Clip (1)

Spudger (1)

TR10 Torx Security Screwdriver (1)

Tweezers (1)

## Step 1 — Glass Panel



- Stick a heavy-duty suction cup near each of the two top corners of the glass panel.
- ⓘ To attach the [suction cups](#), first position the suction cup with the movable handle parallel to the face of the glass panel (as indicated in the second picture).
- While lightly holding the suction cup against the glass, raise the movable handle until it is parallel with the other handle (as indicated by the third picture).
- ⓘ If your suction cups refuse to stick, try cleaning both the glass panel and the suction cup with a damp soft, lint-free cloth. (Dampen with distilled water, and if needed, an equal ratio of distilled water and white vinegar for best results.)
- ⚠ Do not use the suction cups to carry the display glass because if one of them fails to stick, you could drop the screen and break it.
- ⓘ The original iMac box makes a good place to store the glass panel. Otherwise, a padded horizontal surface, like a towel on a desk, will do nicely.

## Step 2



- Gently lift the glass panel perpendicular to the face of the LCD, enough to clear the steel mounting pins attached along the underside of the top edge of the glass panel.
- Pull the glass panel away from the lower edge of the iMac and carefully set it aside.
  - ⚠ Don't use the suction cups to carry the glass panel—if either one loses its grip, the panel could fall and break.
  - ⚠ After setting the glass panel down safely, be sure to release the suction cups, as the suction force over time can crack the glass.
- ☑ During reinstallation, be sure to meticulously clean the inside of the glass panel and the face of the LCD as any dust or fingerprints trapped inside will be annoyingly visible when the machine is turned on.

### Step 3 — Display



- Remove the eight T10 Torx screws securing the LCD to the outer case.

## Step 4



- Carefully lay the iMac stand-side down on a flat surface.
  - ① Due to tight tolerances, you will have to use a thin hooked tool to lift the display out of the outer case. As seen in the third picture, we made one out of a bent paperclip.
  - Use a thin hooked tool to lift one side of the top edge of the display by its steel outer frame.
  - ① After lifting the top edge of the display on one side, hold it out of the outer case while you use a hooked tool to lift the other side.
- ⚠ Do not lift the top edge of the display out of the outer case too far, as several short ribbon cables still connect the two components.

## Step 5



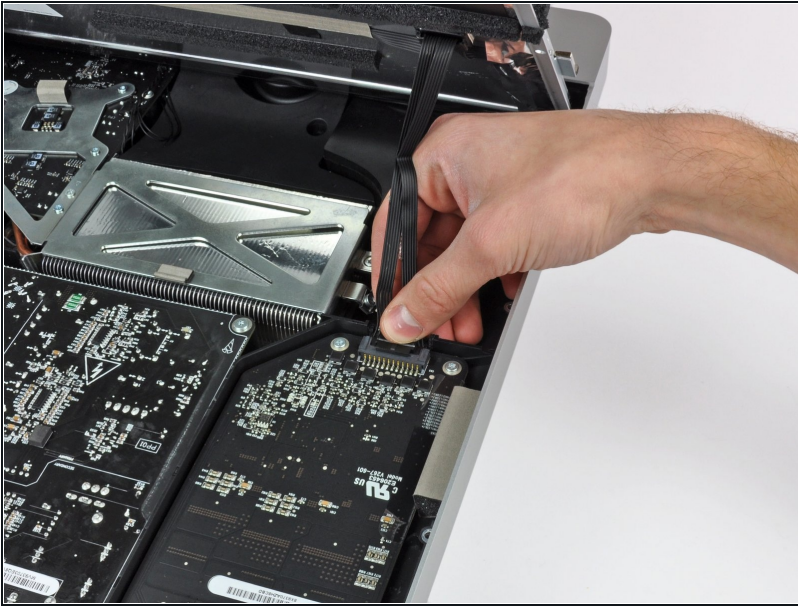
- Using your fingers, carefully pull the vertical sync cable out of its socket on the LED driver board near the top left corner of your iMac.  
⚠ Be sure to pull the connector parallel to the LED driver board, straight out of its socket.

## Step 6



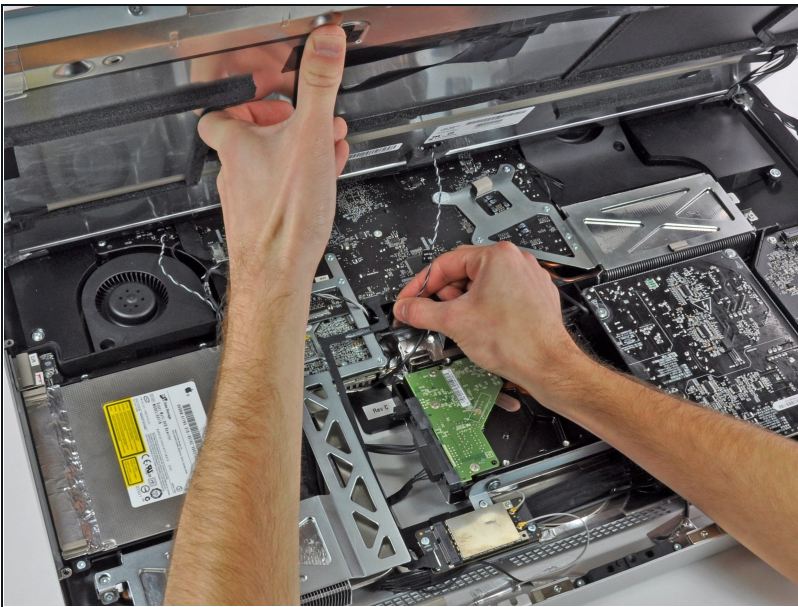
- Squeeze the two display data cable connector arms together to unlock it from its socket on the logic board.
- Pull the display data cable connector away from its socket on the logic board.

## Step 7



- Rotate the display out of the outer case enough to disconnect the LED backlight power cable from the LED driver board.

## Step 8



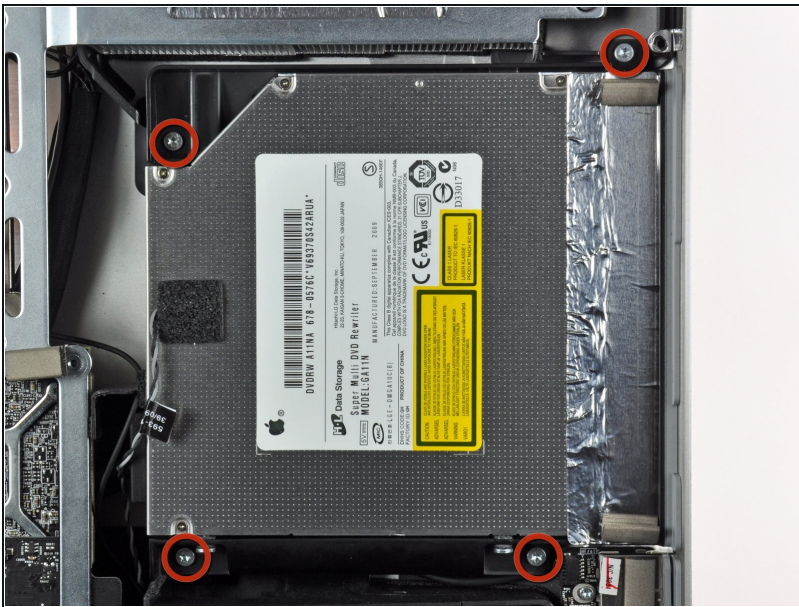
- Lift the display for enough clearance to disconnect the LCD thermal sensor cable connector from its socket on the logic board.
- ① If your fan is spinning full speed after completion, check this connection or the hard drive's thermal sensor cable.

## Step 9



- Carefully pull the display toward the top edge of your iMac and lift it out of the outer case.

## Step 10 — Optical Drive



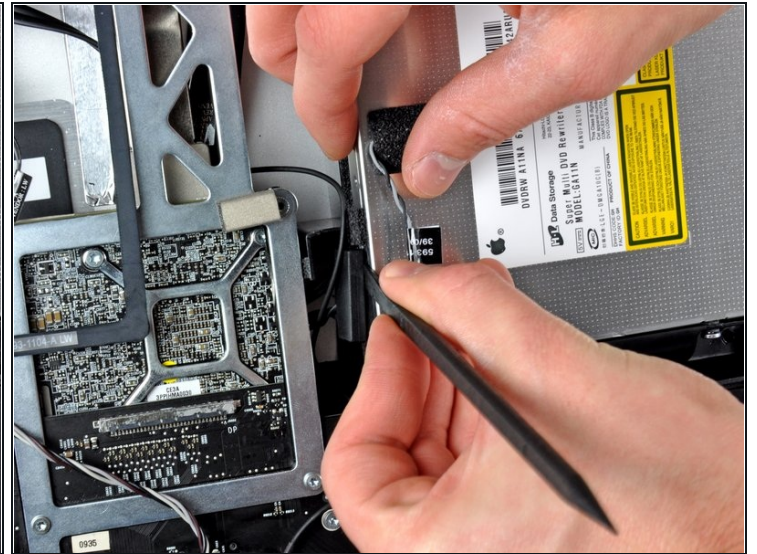
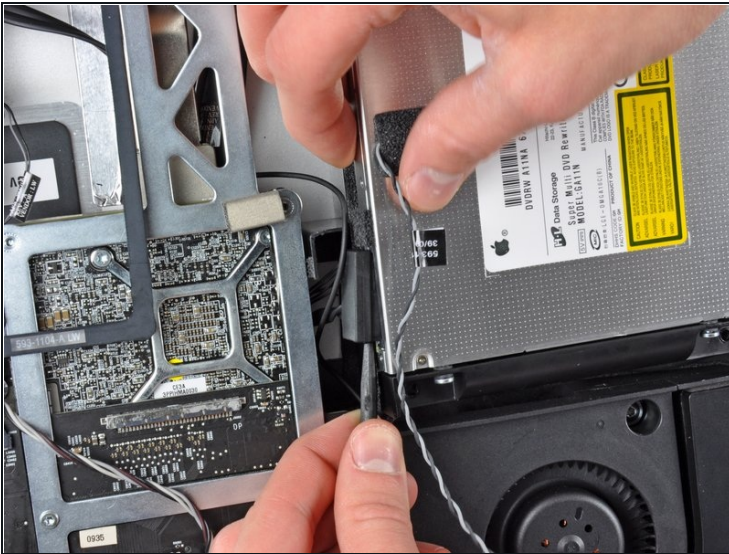
- Remove the four T10 Torx screws securing the optical drive to the outer case.

## Step 11



- Pull the optical drive thermal sensor connector straight away from its socket on the logic board.

## Step 12



- Insert a spudger between the optical drive connector and the optical drive.
- Twist the spudger to slightly separate the optical drive connector from the optical drive, then use your fingers to pull the connector away from the drive.

## Step 13



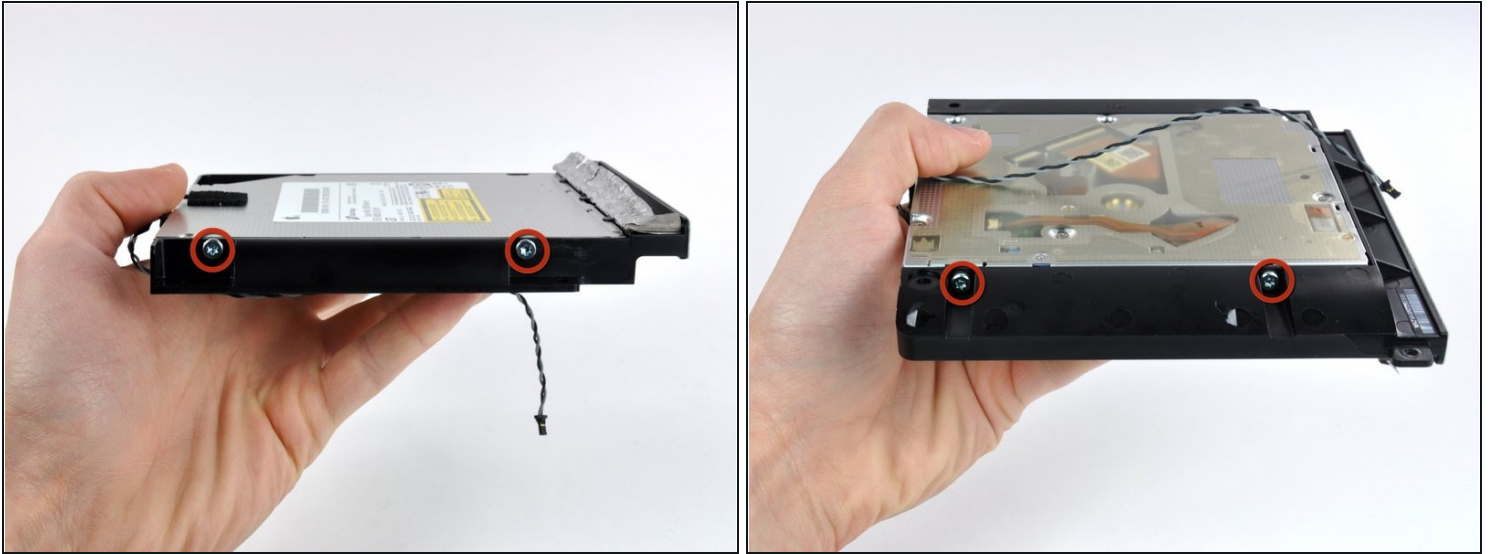
- Lift the left edge of the optical drive slightly and pull it away from the right side of the outer case.
- During reassembly, note that there are two holes in the optical drive face plate into which two stubby plastic posts must engage for proper positioning.

## Step 14 — Optical Drive



- Peel back the portion of aluminum tape highlighted in red, leaving the rest attached to the black plastic optical drive bracket.
- ⓘ It is not necessary to peel all of the EMI tape off the optical drive bracket.

## Step 15



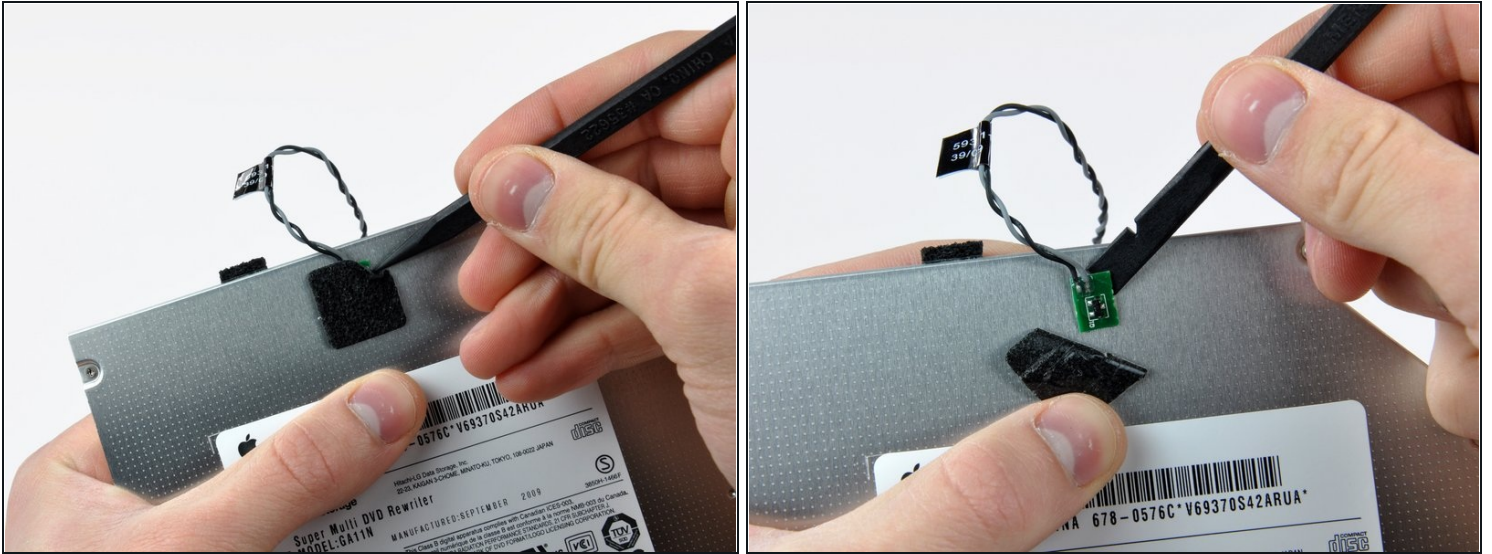
- Remove the two T10 Torx screws from each side of the optical drive (four screws total).

## Step 16



- Use the tip of a spudger to press each of the optical drive bracket tabs out of their slots on the bottom of the optical drive.
- Rotate the optical drive bracket slightly away from the optical drive.
- Pull the optical drive bracket away from the open end of the optical drive, minding any tabs that may get caught.

## Step 17



- Use the tip of a spudger to peel back the piece of foam tape covering the optical drive thermal sensor.
- Use the flat end of a spudger to carefully pry the thermal sensor up off the adhesive securing it to the optical drive.
- If you have a disc or anything else stuck inside your optical drive, we have a [guide](#) to fix it.

---

To reassemble your device, follow these instructions in reverse order.