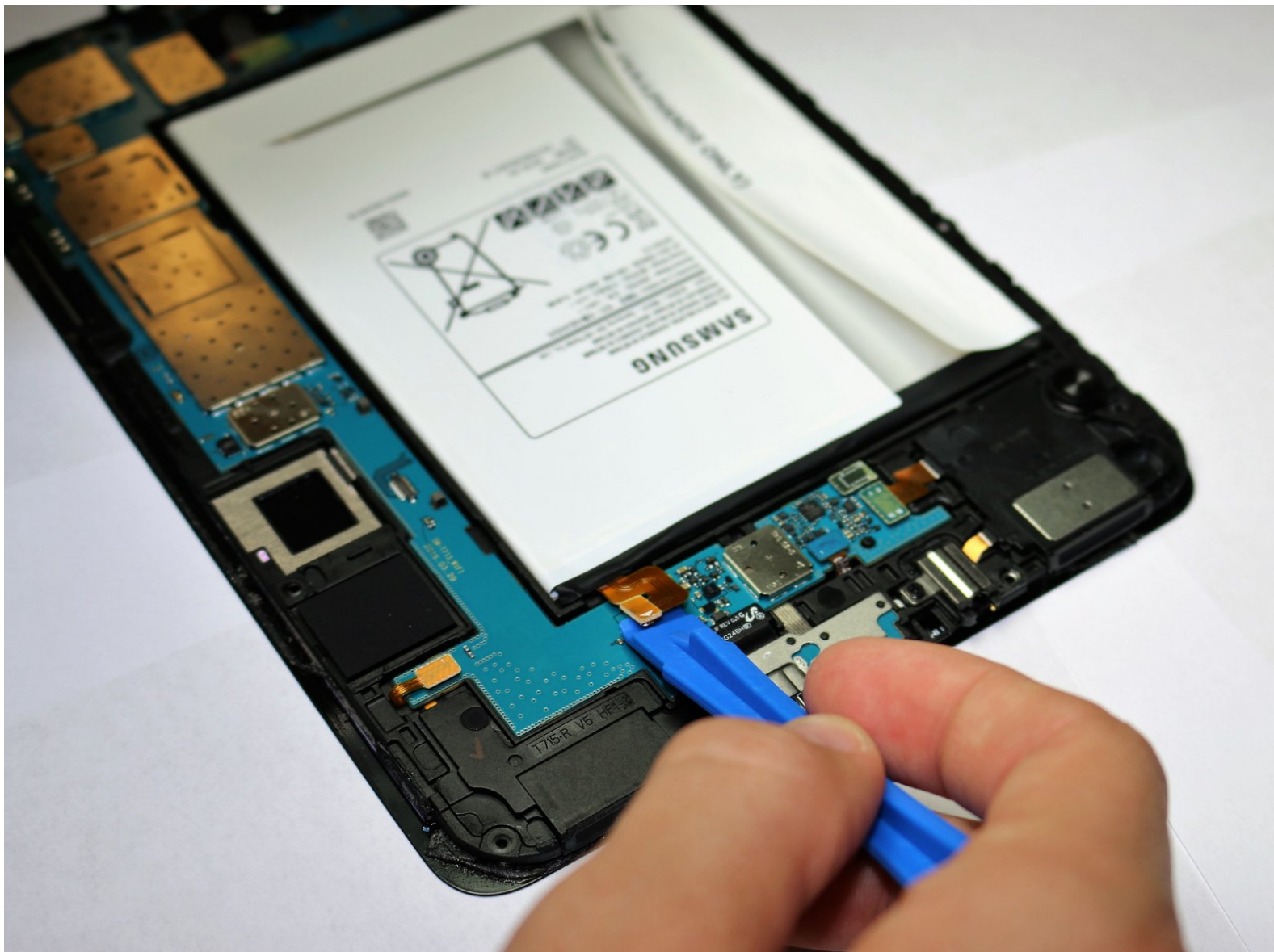




Samsung Galaxy Tab S2 8.0 Battery Replacement

If the tablet is not staying on unless plugged...

Written By: Jonathan Wood



INTRODUCTION

If the tablet is not staying on unless plugged in, replacing the battery should solve the problem.



TOOLS:

- [Suction Handle](#) (1)
- [iFixit Opening Tool](#) (1)
- [iFixit Opening Picks \(Set of 6\)](#) (1)
- [iFixit iOpener](#) (1)
- [Phillips #1 Screwdriver](#) (1)



PARTS:

- [Samsung Galaxy Tab S2 8.0 Battery](#) (1)

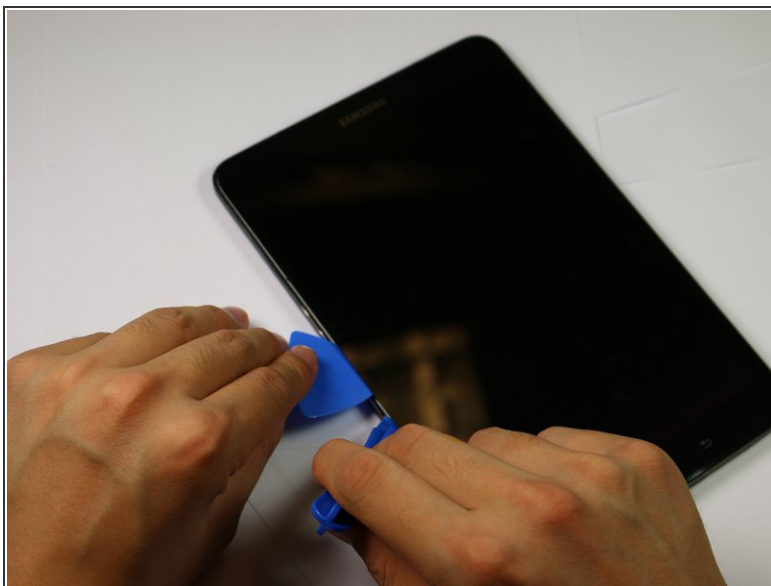
Step 1 — Screen



⚠ Working on a device that is turned on may yield an electric shock. Make sure your device is turned off before working on it.

- Apply heat using an iFixit iOpener or another heating gun in order to weaken the adhesive around the edges of the screen.

Step 2



- Insert the plastic opening tool into the gap between the screen and tablet in the location where you want to start removing the screen.
- Put an opening pick in the gap created, in between the screen and the panel.
- Repeat all around device, putting 2 picks on top and bottom, and one on each side.

This document was generated on 2023-01-15 04:34:52 AM (MST).

Step 3

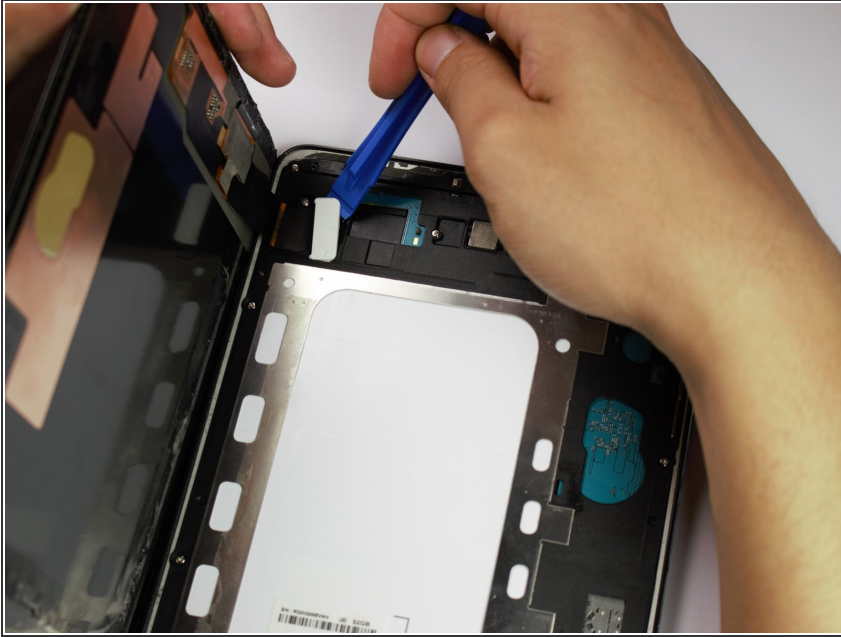


- Carefully remove the small suction cup from the corner without moving the screen.
- Place the small suction cup in the center of the screen and lift to remove screen.

⚠ Make sure to separate all glue under the middle parts of the screen as well as the edges - use a thin stiff card to slice through it. Avoid the ribbon cable. Do not attempt to lift the screen until all glue is separated.

⚠ The screen is still connected to the rest of the device by a cable, so don't pull the screen up too quickly.

Step 4



- Place the plastic opening tool underneath the ribbon cable connecting the screen to the tablet.
- Carefully lift the plastic opening tool to detach the ribbon from the tablet.

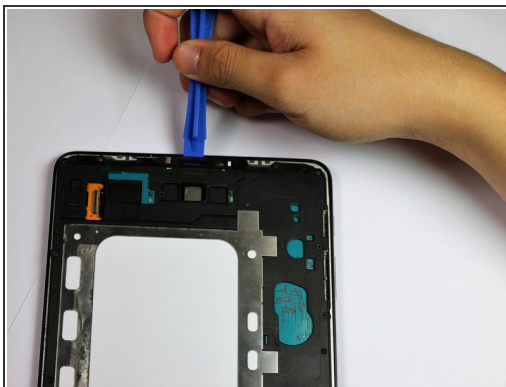
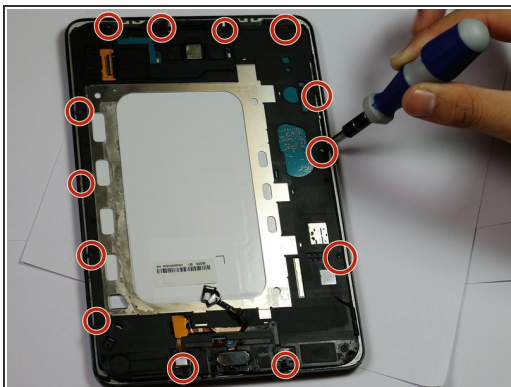
⚠ Make sure to discharge any static electricity by touching a grounded metal object, like a quarter, before touching the inside of the device.

Step 5



- The screen is now detached from the rest of the tablet.

Step 6 — Battery



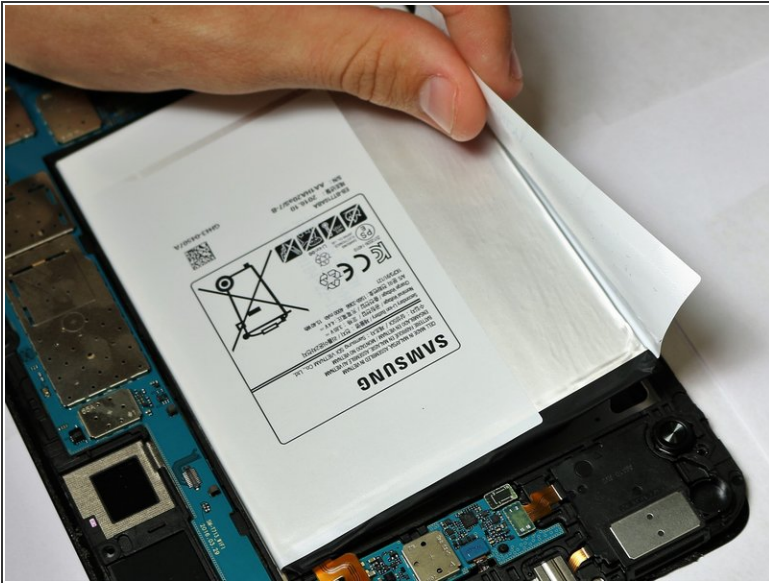
- Remove the 13 3mm screws from around the edges of the board using a Phillips #1 screwdriver head.
- Lift up and remove the panel of the board using a plastic opening tool.

Step 7



- Remove the cable that connects the battery and device using the plastic opening tools.

Step 8



- You can now safely remove the battery from the device by lifting it from the paper flap.

To reassemble your device, follow these instructions in reverse order.