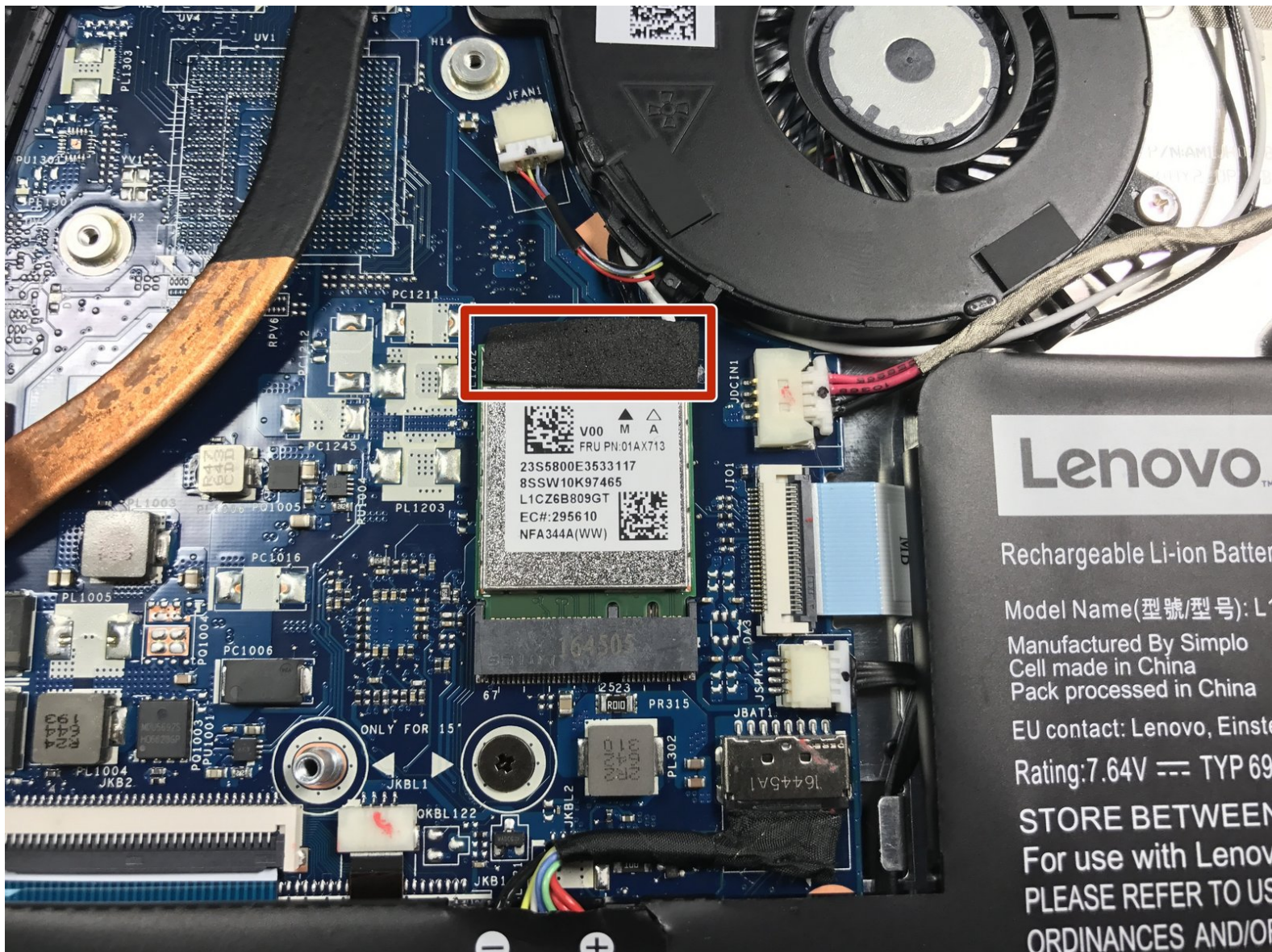




Lenovo Yoga 710-14IKB Wi-Fi Card Replacement

Replace the Wi-Fi card to fix Wi-Fi connection problems.

Written By: Grant Doerksen



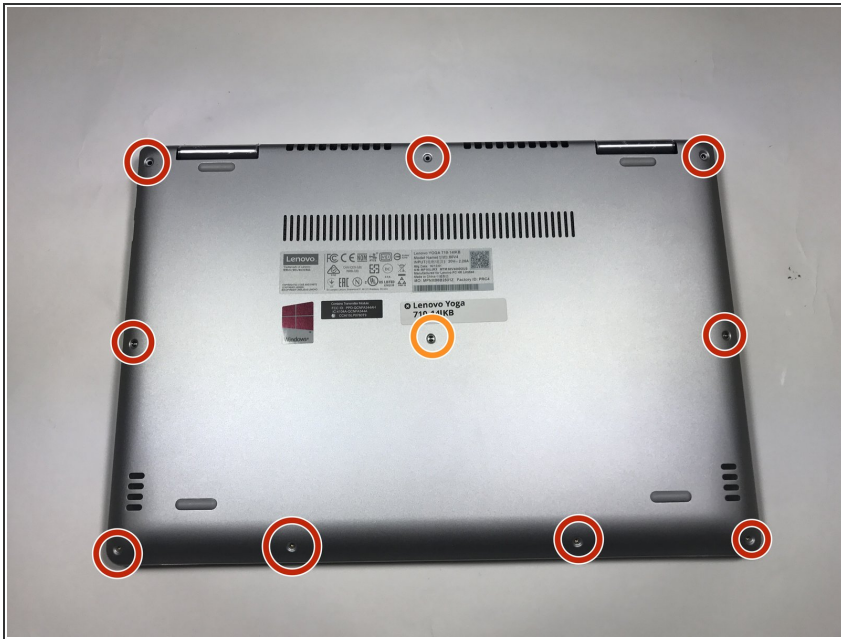
INTRODUCTION


This guide will demonstrate how to replace the Wi-Fi card in your Lenovo Yoga laptop.

TOOLS:

- [T4 Torx Screwdriver](#) (1)
 - [iFixit Opening Tools](#) (1)
 - [Phillips #00 Screwdriver](#) (1)
 - [Precision Tweezers Set](#) (1)
-


Step 1 — Back Cover



 Ensure your device is completely OFF before starting this guide.

- Use a Torx T4 screwdriver to unscrew the nine 5 mm screws holding the cover in place.


- Use a Torx T4 screwdriver to unscrew the 8 mm screw in the center.

 When reassembling, make sure not to tighten the screws too much or you may risk cracking the plastic cover.

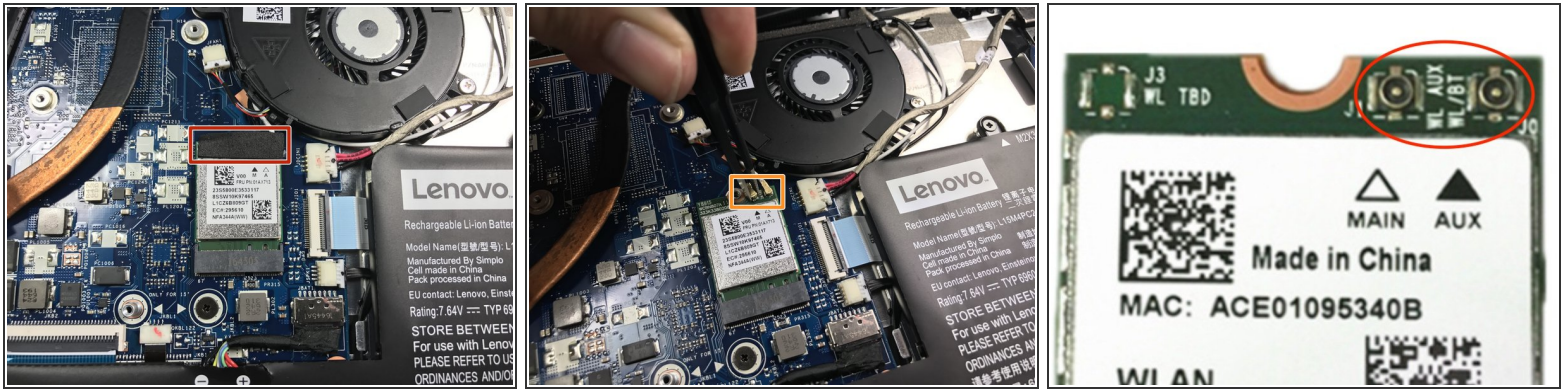
Step 2



- Use the plastic opening tool to pry the cover up and away from the laptop, starting at one end and working your way around the cover.

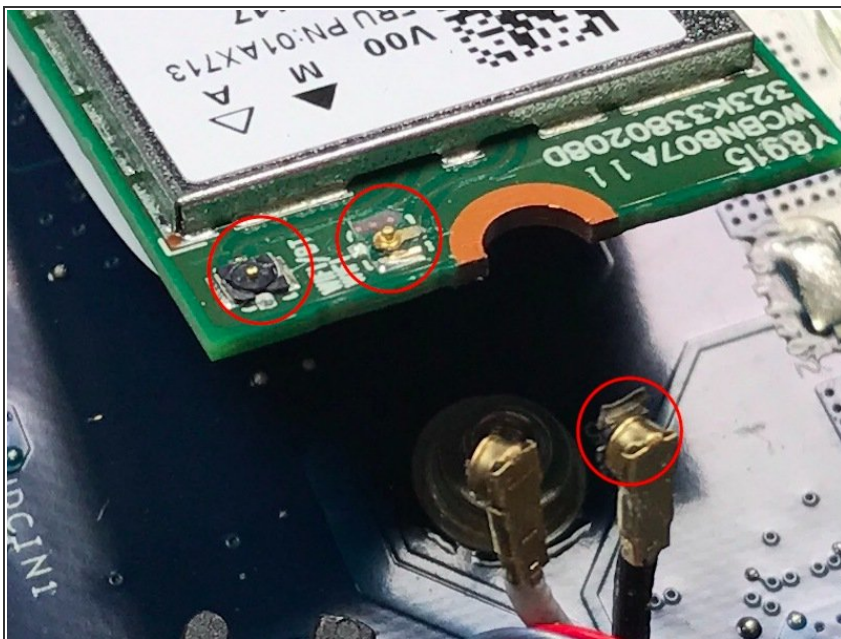
 The cover is large and flat and made of thin plastic. It cracks easily, so make sure not to pry too hard.

Step 3 — Wi-Fi Card



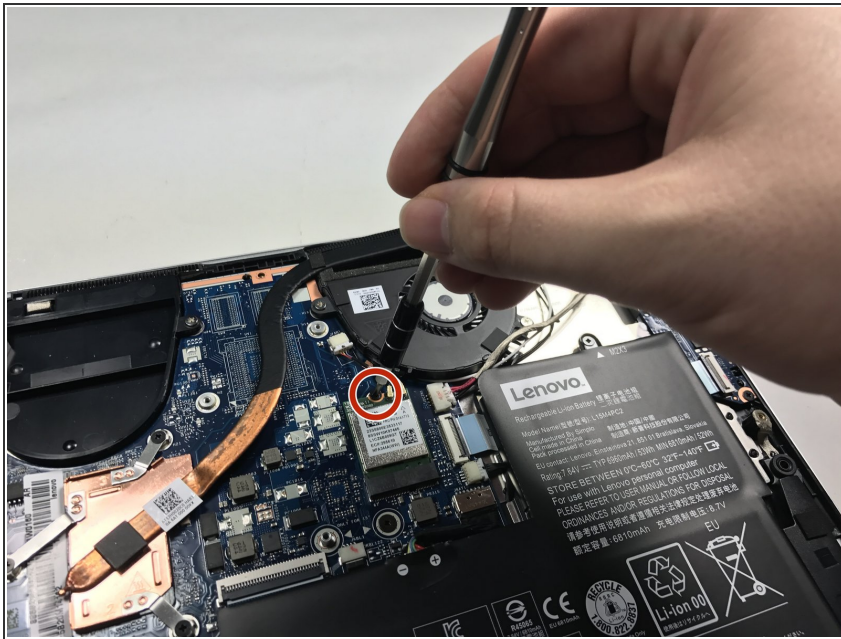
- Peel off the black tape covering the top of the WiFi card.
 - Remove the black and white antenna cable attached to the card by pulling them off using the precision tweezers.
- ⚠ BE CAREFUL! The antenna socket is VERY FRAGILE. If you use brute force, the antenna socket on board (female) will be pull out with the male connector.
- ⓘ If you disconnect the antenna cable properly, the socket will remain undamaged like fig.3

Step 4



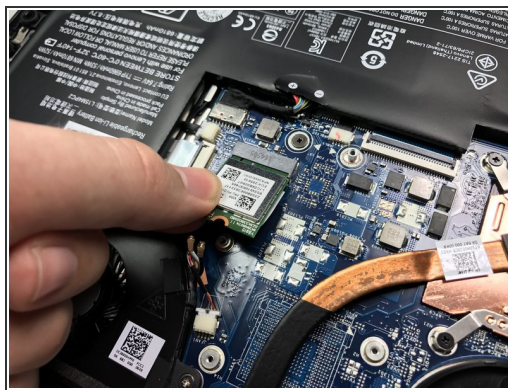
- ⚠ If you disconnect it with brute force, it will be damaged like that.

Step 5



- Use a #00 Phillips screwdriver to remove the 3mm screw in the center at the top of the card.

Step 6



- The WiFi Card should be unbound from the surface. Carefully remove the card from the laptop by pulling away from the socket.

To reassemble your device, follow these instructions in reverse order.