



PalmOne Zire 72 Control Pad Replacement

Written By: Michelle Medina





TOOLS:

- [T5 Torx Screwdriver](#) (1)
- [Phillips #00 Screwdriver](#) (1)
- [Spudger](#) (1)

Step 1 — Control Pad



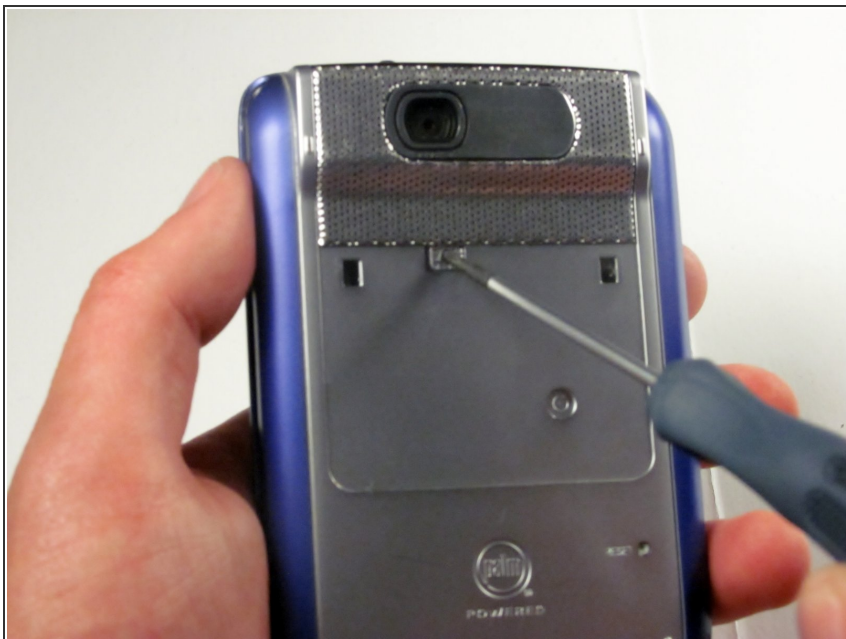
- Using a T5 Torx screwdriver, unscrew the two 5mm screws located at the bottom of the device.

Step 2



- Peel back the adhesive label below the camera on the rear to reveal a hidden screw, circled in the picture to the left.
- ⓘ If you peel the entire adhesive off, two holes underneath will be exposed to future damage. Try to preserve the label to reapply later.
- **Alternate Procedure:**
Underneath the camera, feel for a depression and cut the sticker directly above the depression to reveal the hidden screw.

Step 3



- Use a #00 Philips screwdriver to remove the 2.5mm hidden screw.

Step 4



- Use either end of the spudger to carefully pry off the camera lens mesh cover.

Step 5



- Using the #00 Phillips screwdriver, remove the two 9mm screws on the top corners of the device.

Step 6



- Spin the phone around so that the headphone jack is facing you. Run the flat end of the spudger around the entire edge of the device to gently pry the case off.
 - ⚠ Gently remove the case to avoid damaging it. Do not try to force the case open.
 - ℹ The L shaped latches located on the bottom of the device make it hard to remove the case; you should run the spudger around the device's edges again if you are having problems.

Step 7



- Remove the cover by lifting it from right to left.
 - This should be similar to the action of the opening of a book.
- ⚠ The brown film connecting the motherboard to the screen may tear if this is not done carefully.

Step 8



- Lift the control pad buttons off of the motherboard.

To reassemble your device, follow these instructions in reverse order.