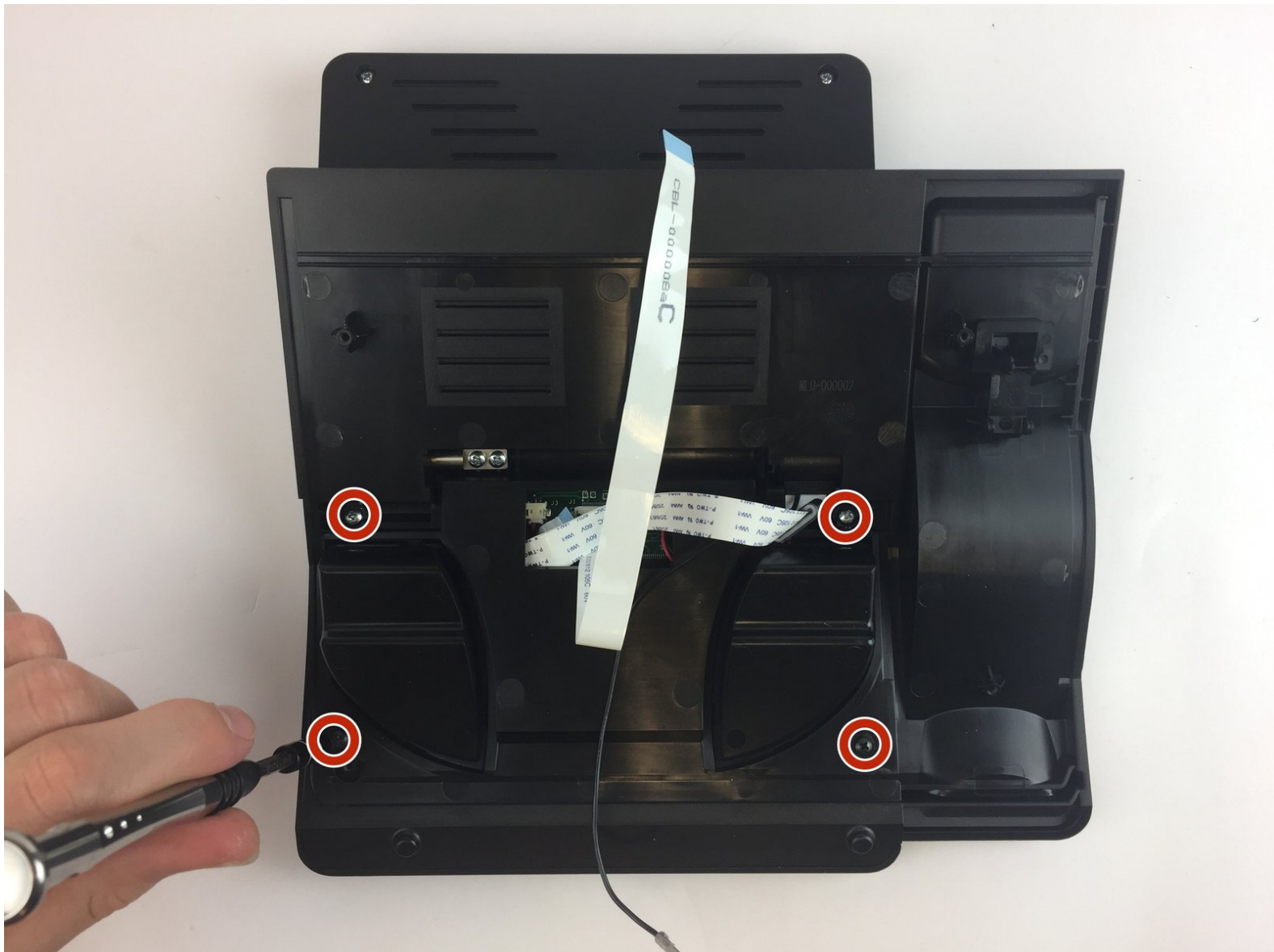




ACN Iris WG4K Keypad Ribbon Cable Replacement

Replace damaged ribbon connector.

Written By: Itze Kenney



INTRODUCTION

The video screen ribbon cable is a part of the device used for transferring data between the keypad and the motherboard. Consider checking this guide before replacing the keypad, since you might just have a disconnected or faulty ribbon connector.



TOOLS:

- [Phillips #0 Screwdriver](#) (1)
-

Step 1 — Handset



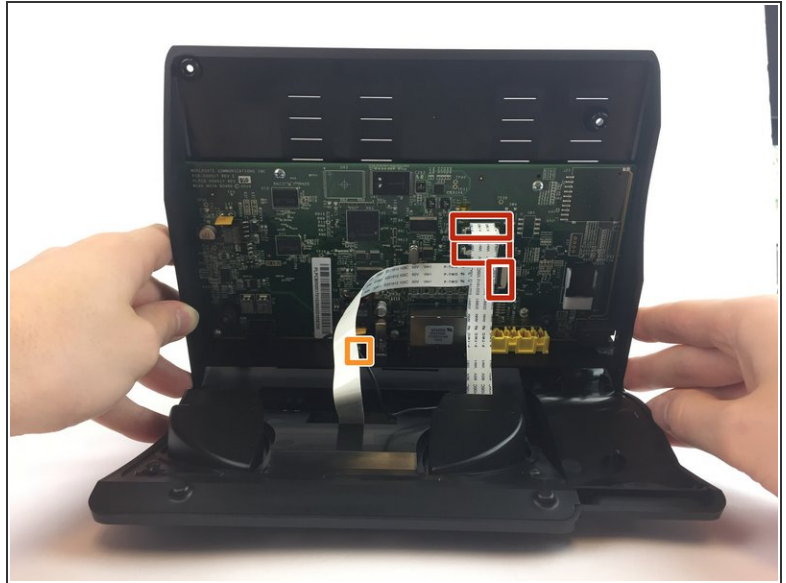
- Press upwards with your index finger on the 4P4C connector as shown in the image.
- Pull the connector gently out of its socket.

Step 2 — Lower Case



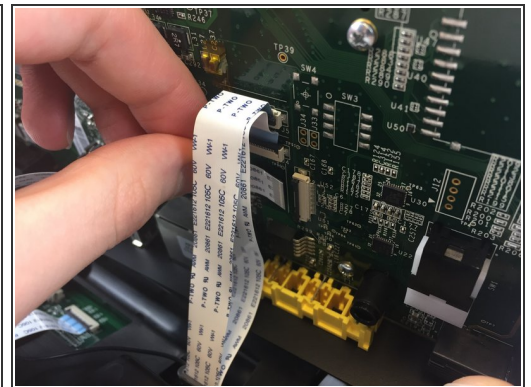
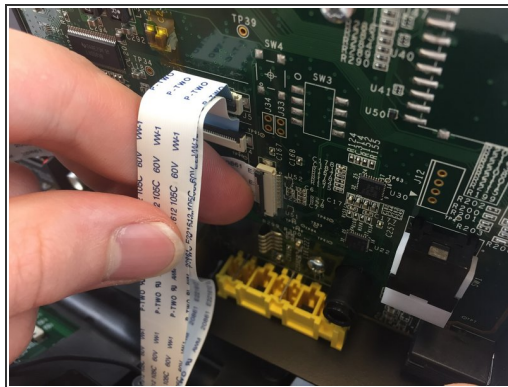
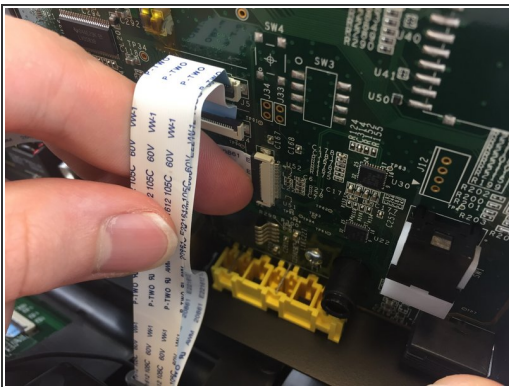
- Flip the main body of the video phone so that the bottom is facing up.
- Use the Phillips #0 Screwdriver to remove the four Phillips head screws (6 mm) highlighted by the red circles.

Step 3



- Lift the back case upwards to expose the inside components.
- Red rectangles indicate the three ribbon cables.
- The orange square indicates the blade connector.

Step 4



- Disconnect the three ribbon cables from their insulation-displacement connectors by flipping up the black plastic clip.
- Gently pull the ribbon cables out of their insulation-displacement connectors.

Step 5



- Disconnect the blade connector from the blade receptacle by gripping the exposed area of the blade connector.
- Gently pull the blade connector out of the blade receptacle.

Step 6



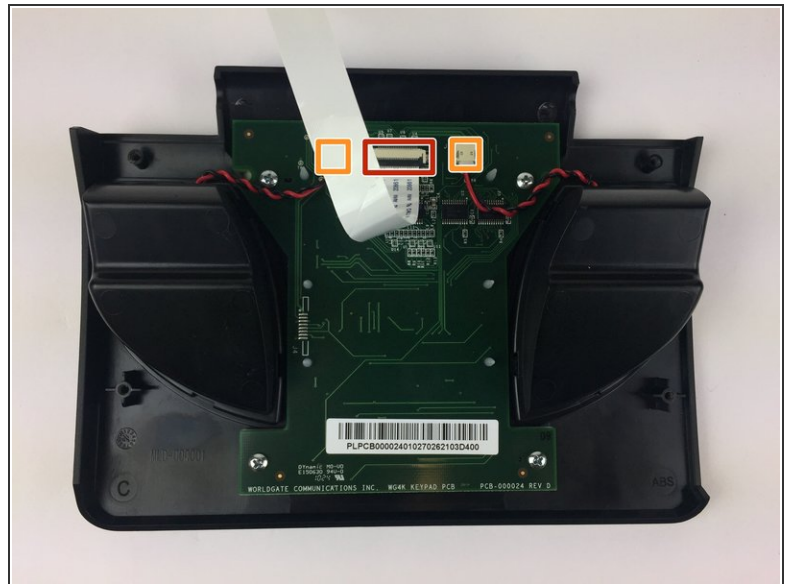
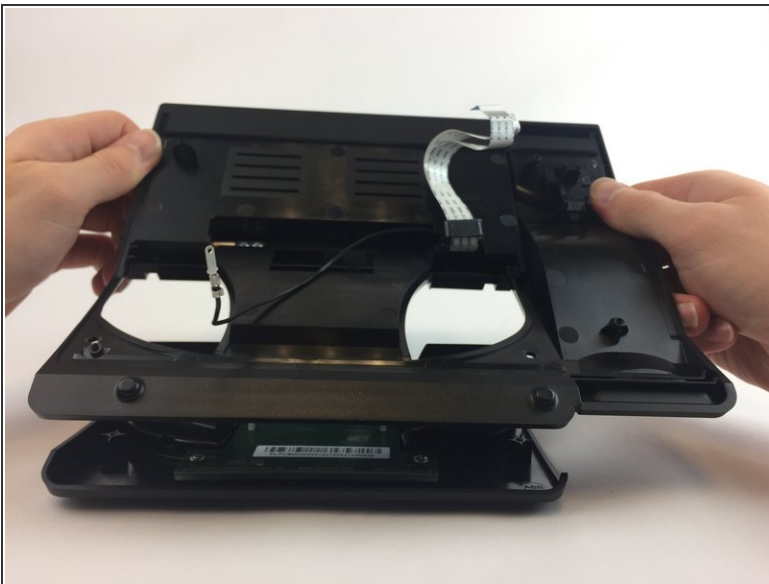
- Gently lift up the lower case to separate it from the top case.

Step 7 — Keypad Ribbon Cable



- Use the Phillips #0 Screwdriver to remove the four Phillips head screws (6 mm) highlighted by the red circles.

Step 8



- Gently lift up on the upper case to separate it from the keypad/speaker panel.
 - The ribbon cable is highlighted by the red rectangle.
 - The 2-pin JST connectors are highlighted by the orange squares.

Step 9



- Disconnect the ribbon cable from its insulation-displacement connector by flipping up the black plastic clip.
- Gently pull the ribbon cable out of its insulation-displacement connector.

To reassemble your device, follow these instructions in reverse order.