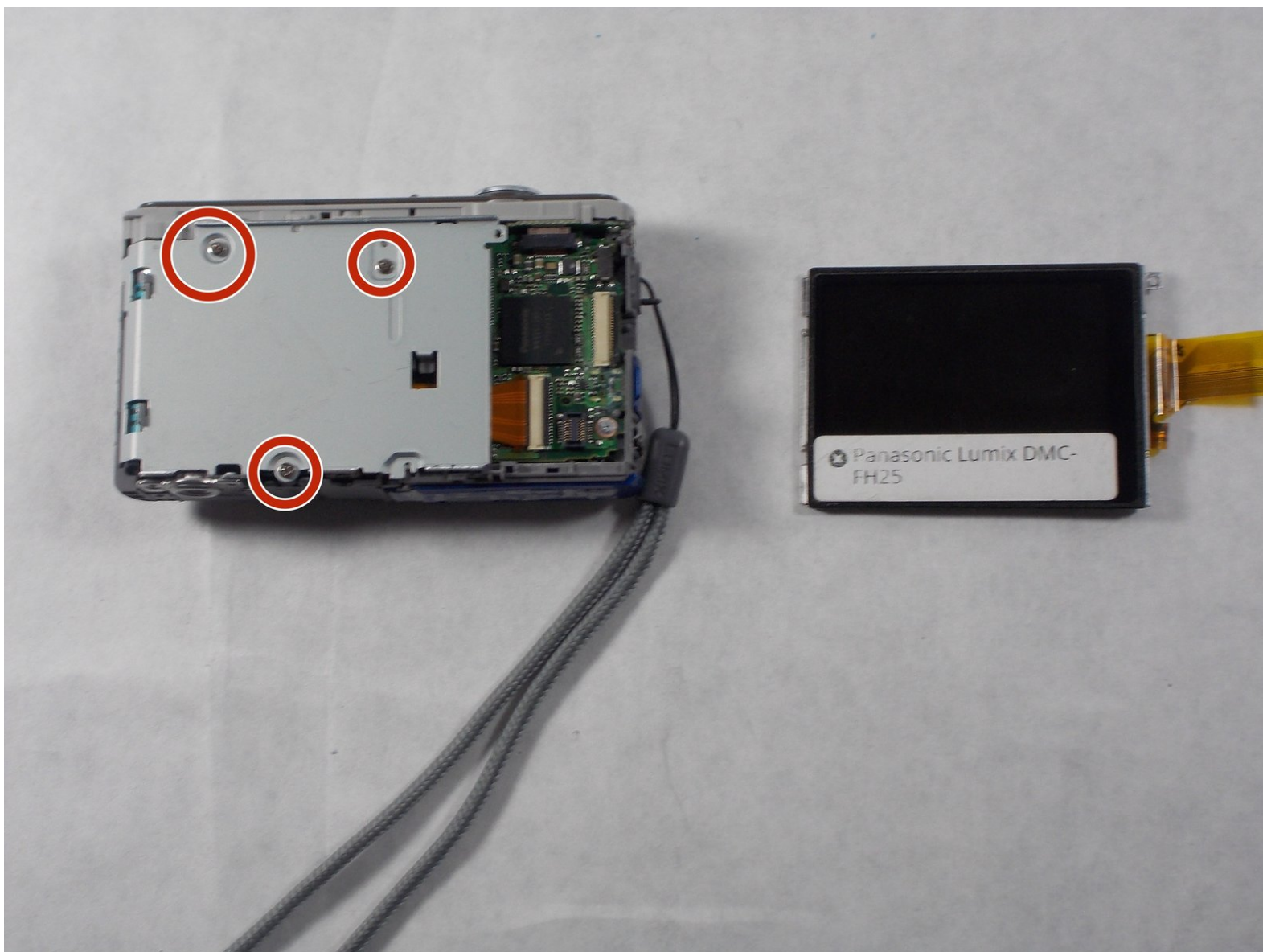




Panasonic Lumix DMC-FH25 Page Lens Assembly Replacement

If the lens becomes damaged, replacement might be necessary. This is also useful if the camera has a zoom error or particulate gets into the assembly.

Written By: Janice Weldon



INTRODUCTION

Replacing the zoom is necessary if the assembly is damaged. It can also be useful to clean the assembly if grit gets through the initial lens rings. After the screen is removed there are two more parts that come out to access the assembly. It is easy to remove the ribbon cables attached to the assembly and remove it from there.



TOOLS:

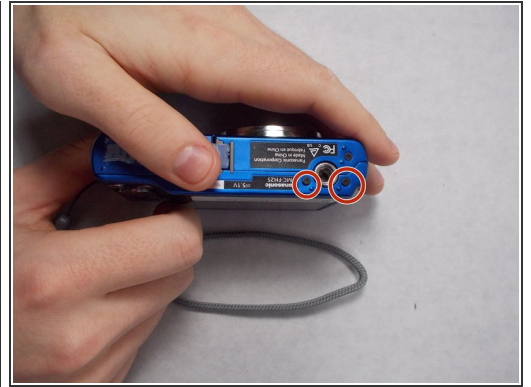
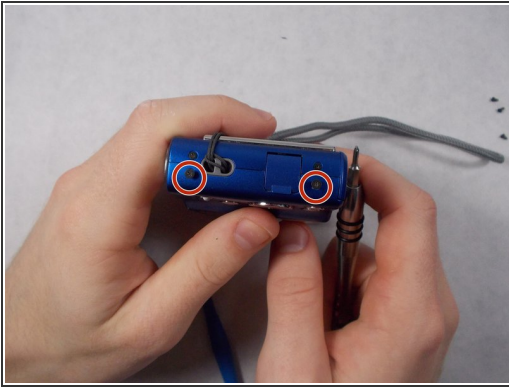
- [Phillips #00 Screwdriver](#) (1)
- [iFixit Opening Tools](#) (1)



PARTS:

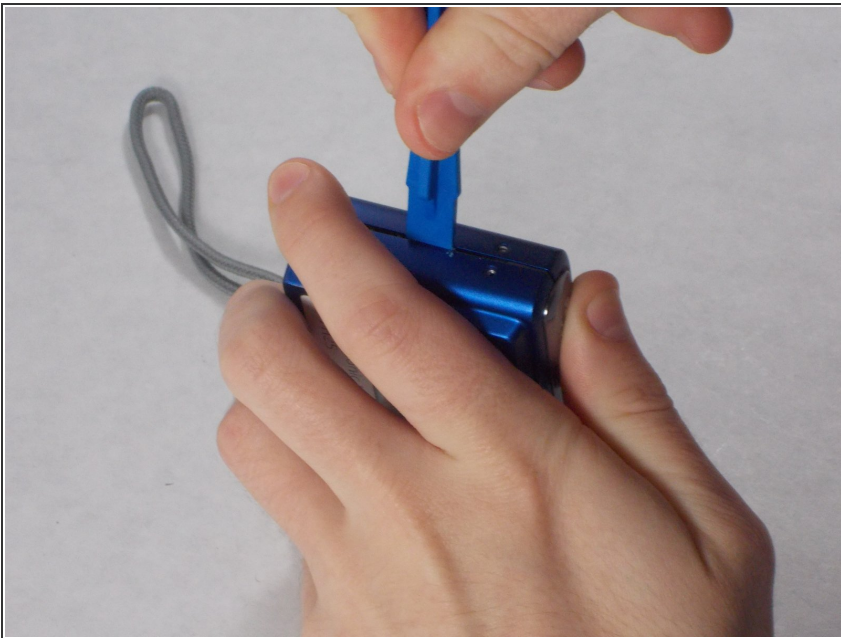
- [Phillips screws 6.35mm](#) (3)
- [Phillips screw 6 mm](#) (1)
- [Phillips screws 6.1mm](#) (1)

Step 1 — Back Case



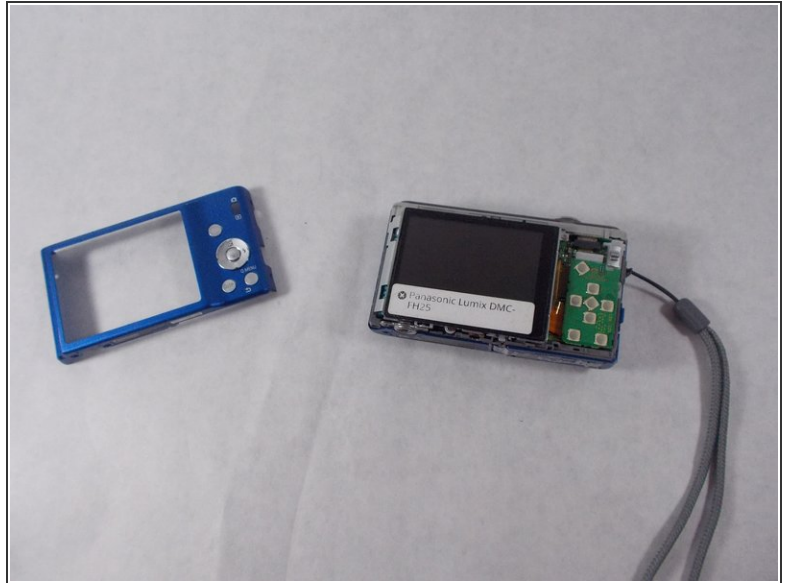
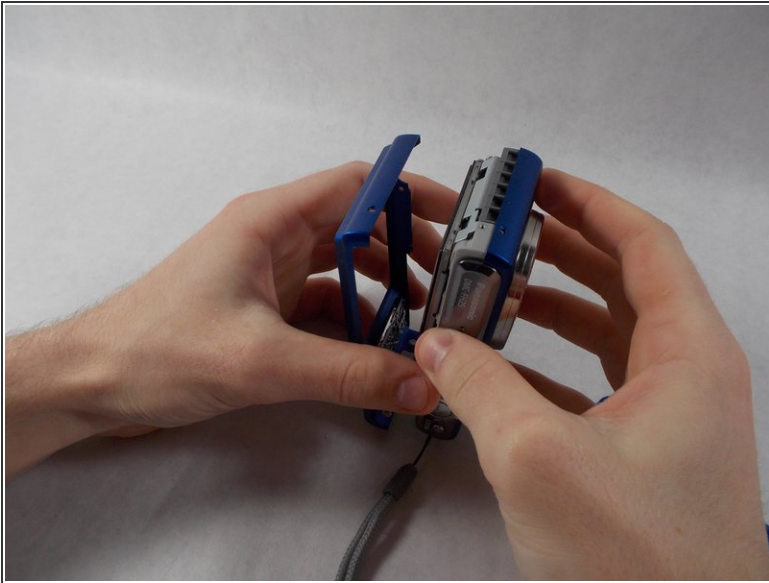
- Remove 5 screws attached to the back case using a 00 Phillips head screwdriver.

Step 2



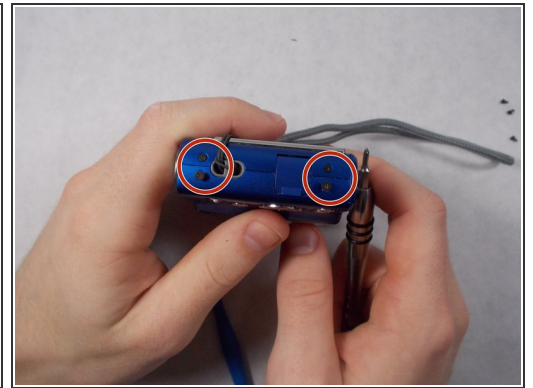
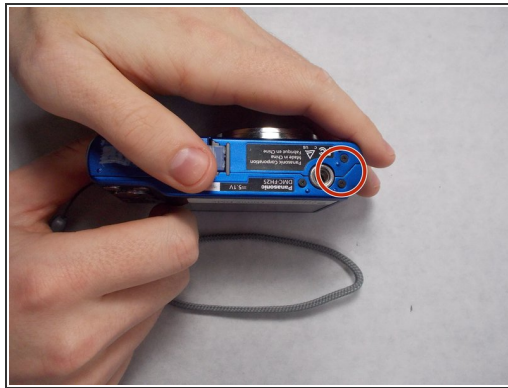
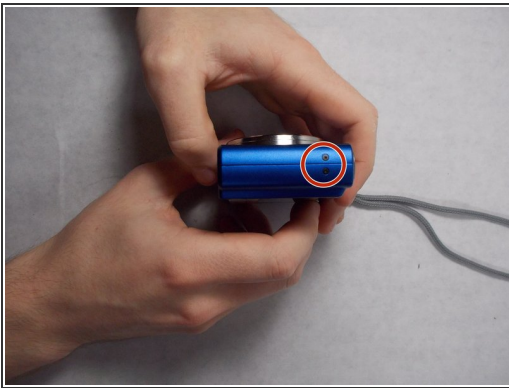
- Using your hands and a pry tool, lever the back case off.

Step 3



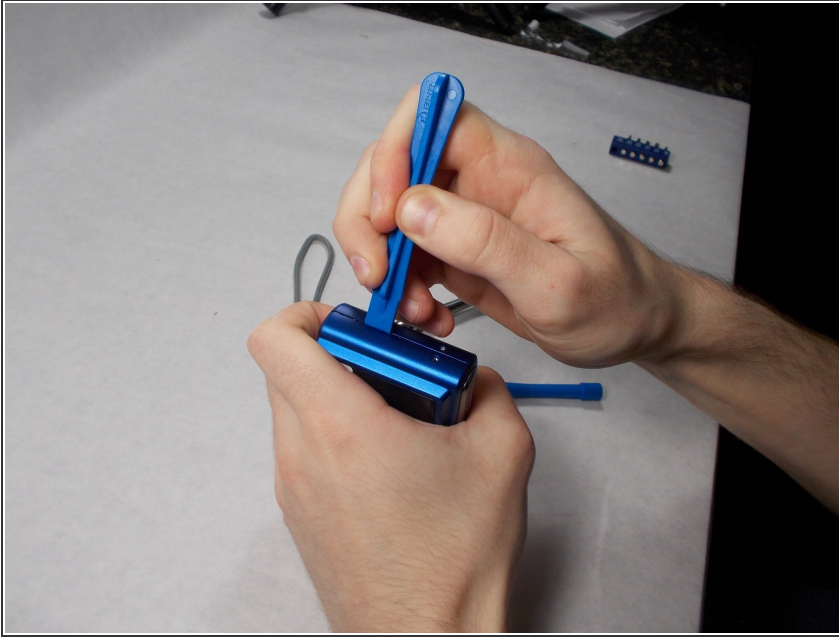
- Remove the back case.

Step 4 — Front Case



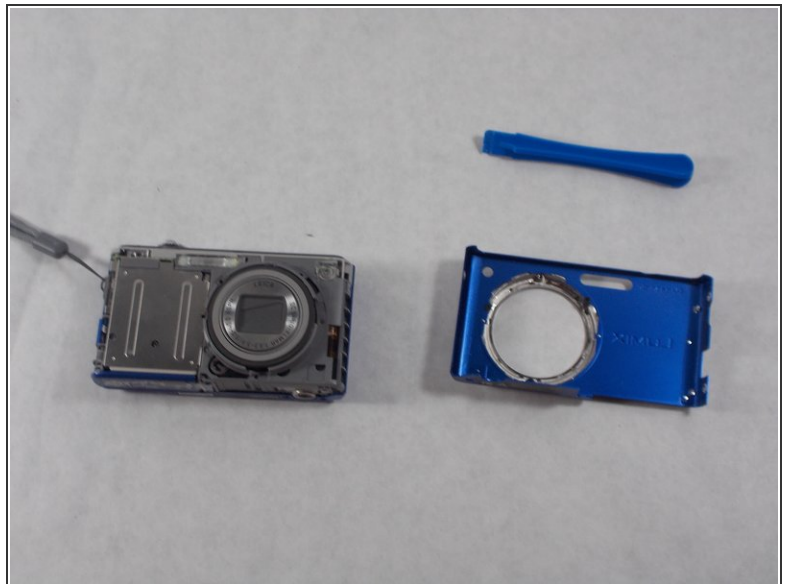
- Remove four screws on the front case using a 00 Phillips head screwdriver. Two will be on the side with the camera strap, one on the bottom, and one on the side opposing the camera strap. They will be in pairs, one screw holding the front case and one screw holding the back case.

Step 5



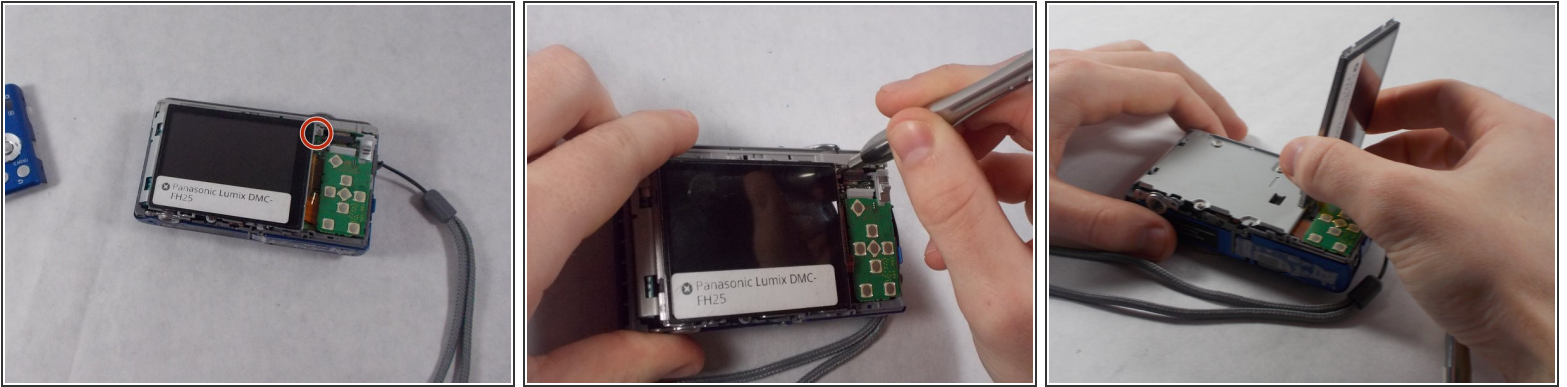
- Using a plastic opening tool and your hands, pull the front case loose from the camera.

Step 6



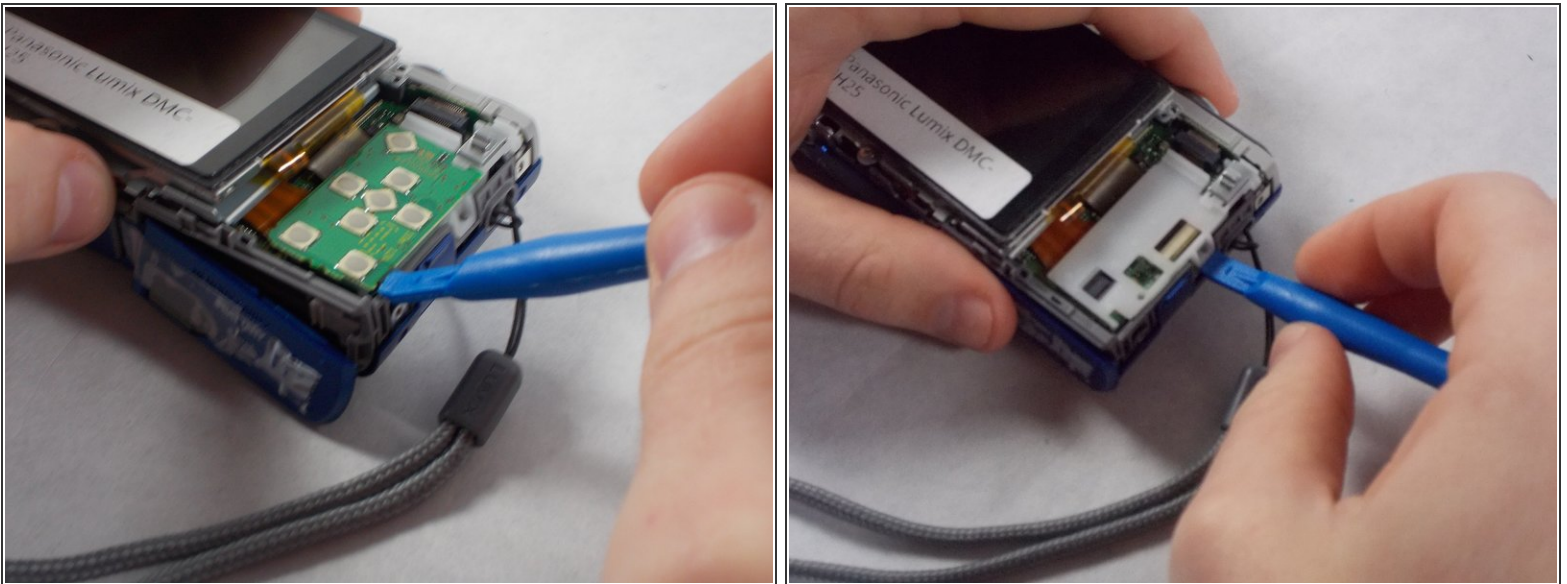
- Remove the front case from the camera.

Step 7 — LCD Screen



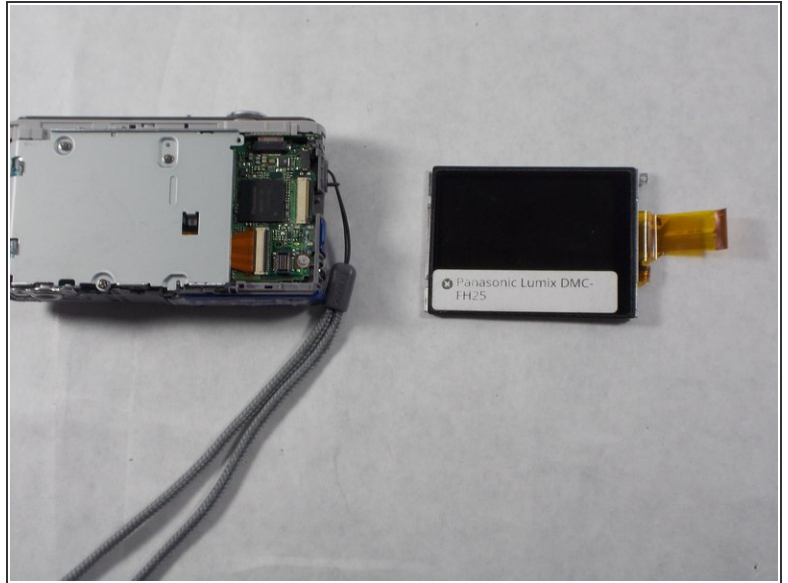
- Using a 00 Phillips head screwdriver, remove a screw from the top right corner of the screen.
- Lift the screen, being careful not to tear the ribbon cables on the right side.

Step 8



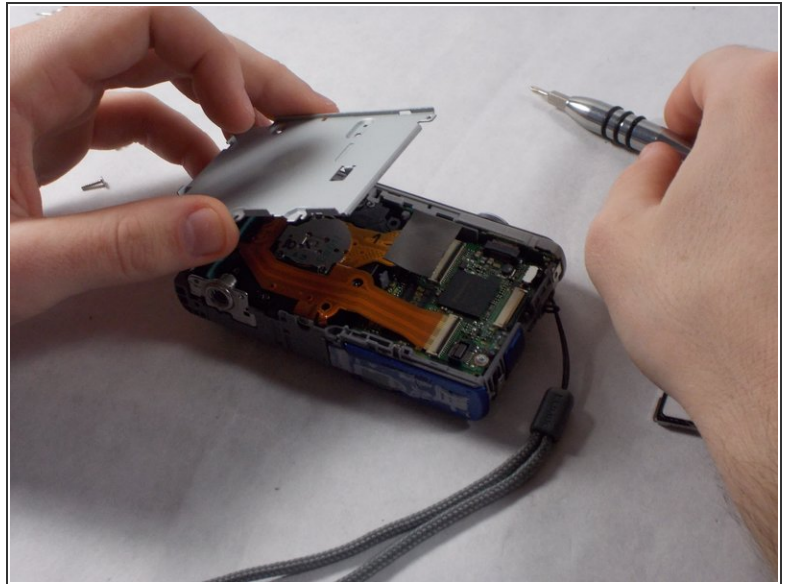
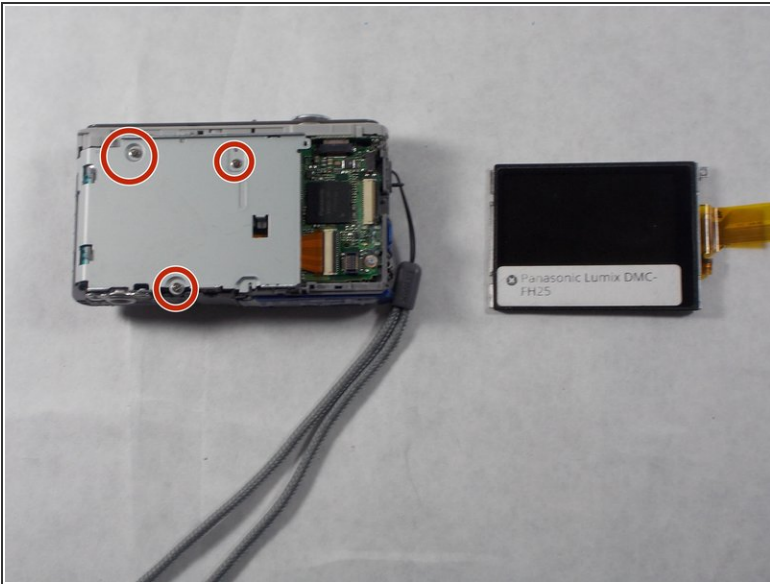
- Access the ribbon cables by removing the green button receiver panel using a plastic opening tool. There is a white panel beneath. Carefully remove this using a plastic opening tool. The white panel may require some elbow grease to get it off, and the panel may make a snapping sound as it comes off.

Step 9



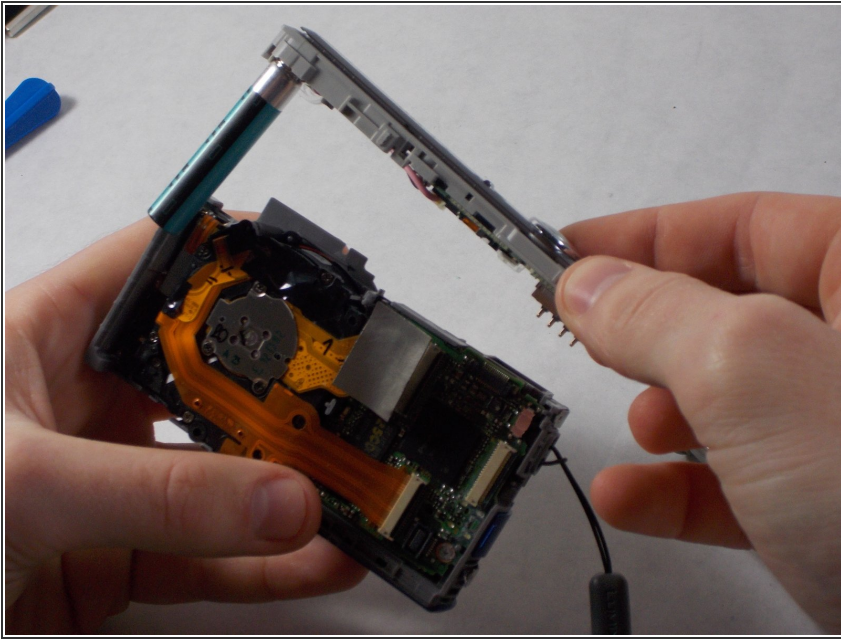
- One of the ribbon cables will be housed behind the screen and the other will be under the panels. Gently pull each free from the housing and remove the screen.

Step 10 — Lens Assembly



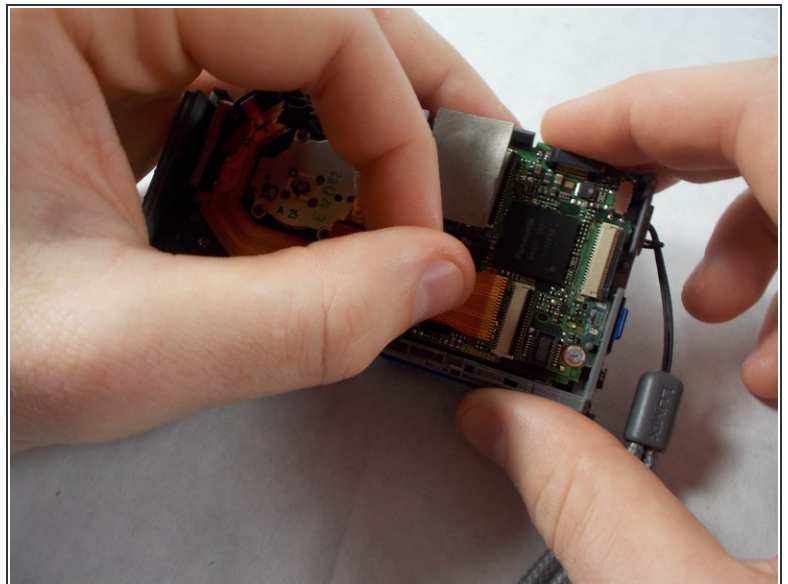
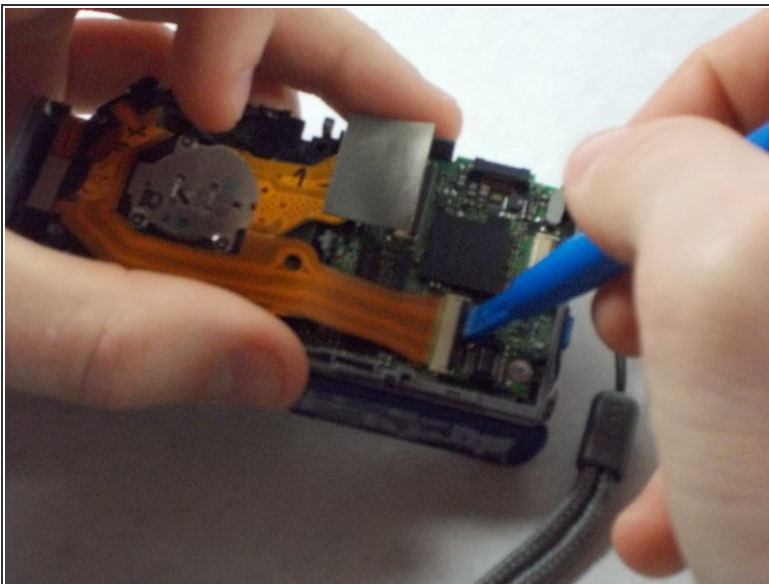
- Under the screen is a silver panel. Remove three screws using a 00 philips screwdriver and take the plate off.

Step 11



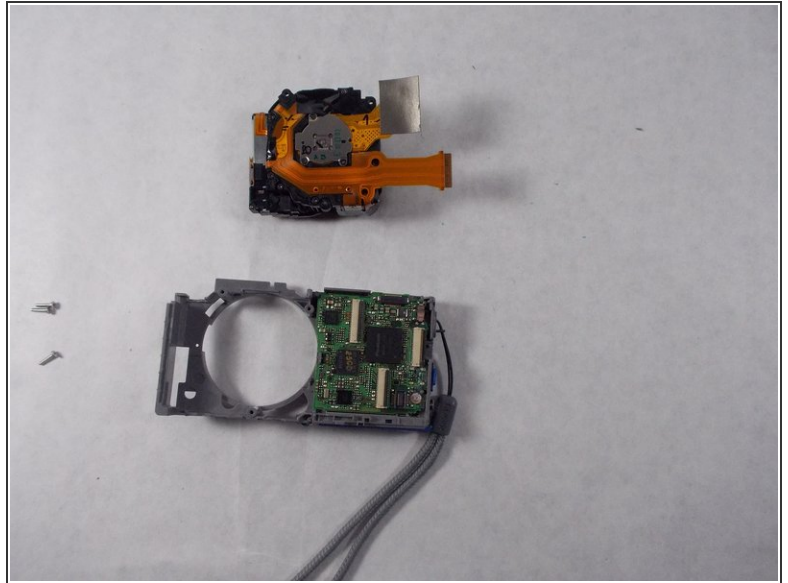
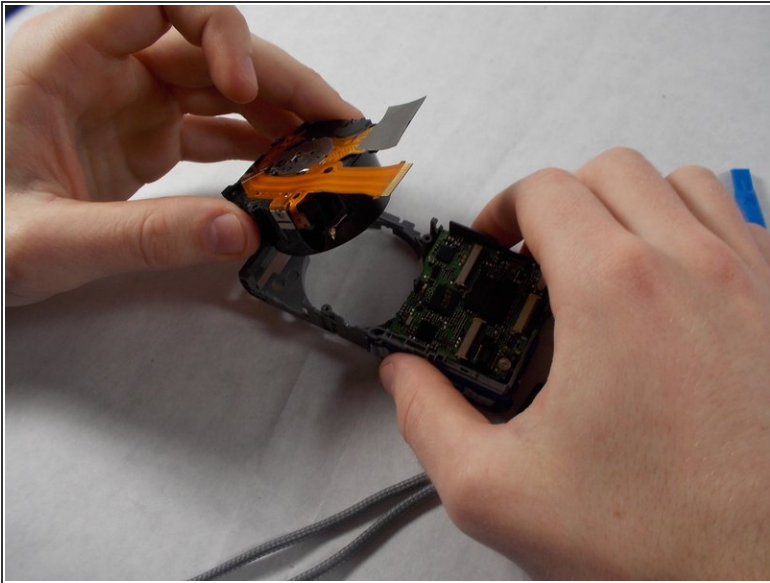
- Remove the silver panel with the buttons and flash battery from the top of the camera. The silver tripod socket may fall out. Do not be alarmed and don't put it back in.

Step 12



- Use the pry tool to lift the latches holding the ribbon cables in place. Gently tug on them, careful not to break them. The top ribbon cable will take more effort.

Step 13



- Gently remove the lens assembly. It should slide out cleanly.

To reassemble your device, follow these instructions in reverse order.