



# Canon EOS Rebel G Lens Connector Replacement

Replace the Lens Connector in your Canon EOS Rebel G.

Written By: Zach



---

# INTRODUCTION

This guide shows you how to install a new lens connector.



## TOOLS:

- [Phillips #00 Screwdriver](#) (1)
  - [Spudger](#) (1)
-

## Step 1 — Front Panel



- Using a #00 Phillips screw driver, remove three 4.4 mm Phillips screws as indicated by the red circles.

## Step 2



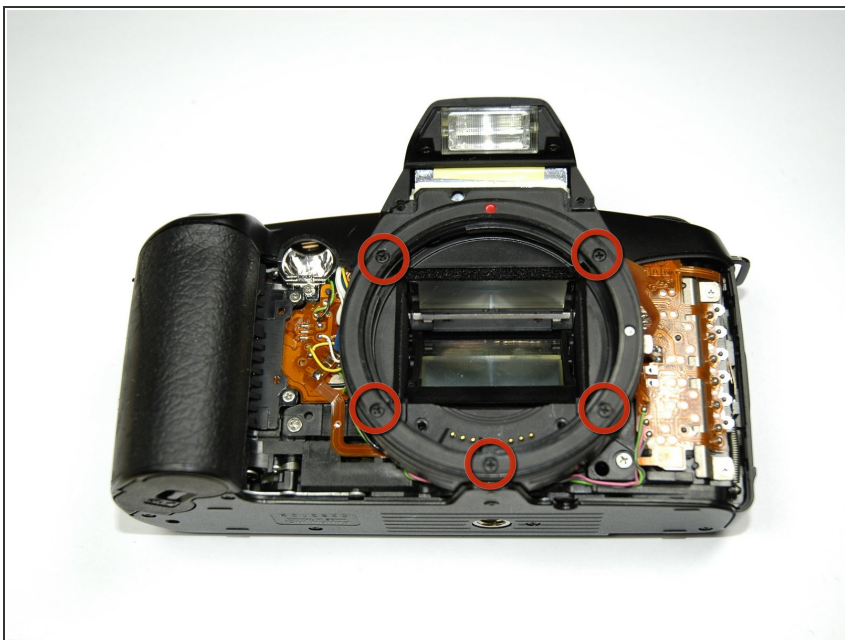
- Using your finger, peel back the textured grip so the components are separated.

## Step 3



- Using the flat end of a spudger, loosen the connection between the front panel and the device.
- Remove the front panel using your hands.

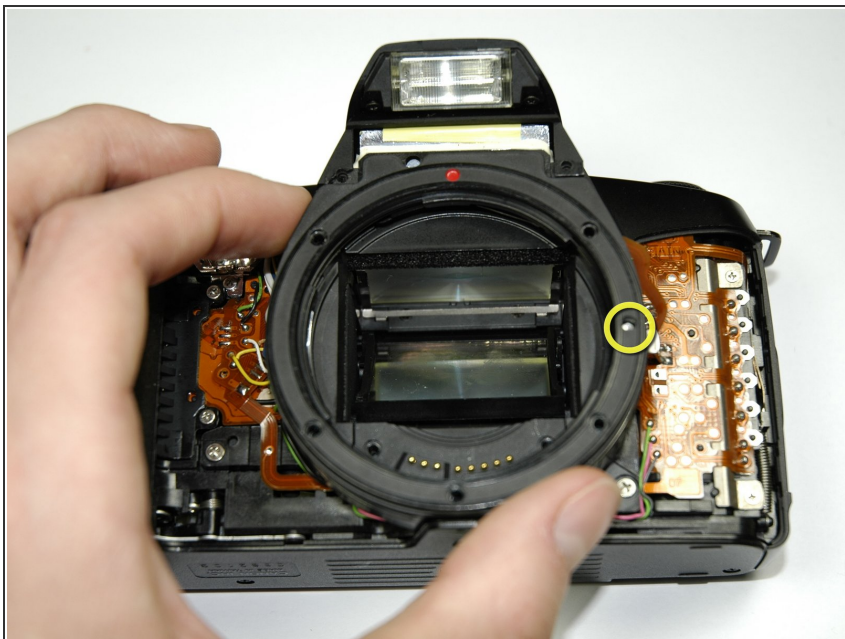
## Step 4 — Lens Connector



- Using a Phillips #00 screwdriver, remove the 5 indicated screws
- Five 6.2 mm Phillips screws



## Step 5



- Using your hands, remove the top black ring.

**⚠ WARNING!** The indicated piece is spring loaded. Prepare for it to eject when taking off top ring.

- Spring located here.

## Step 6



- There are two silver metal rings.
- Remove the top silver metal ring.

## Step 7



- Remove the bottom silver ring.

To reassemble your device, follow these instructions in reverse order.