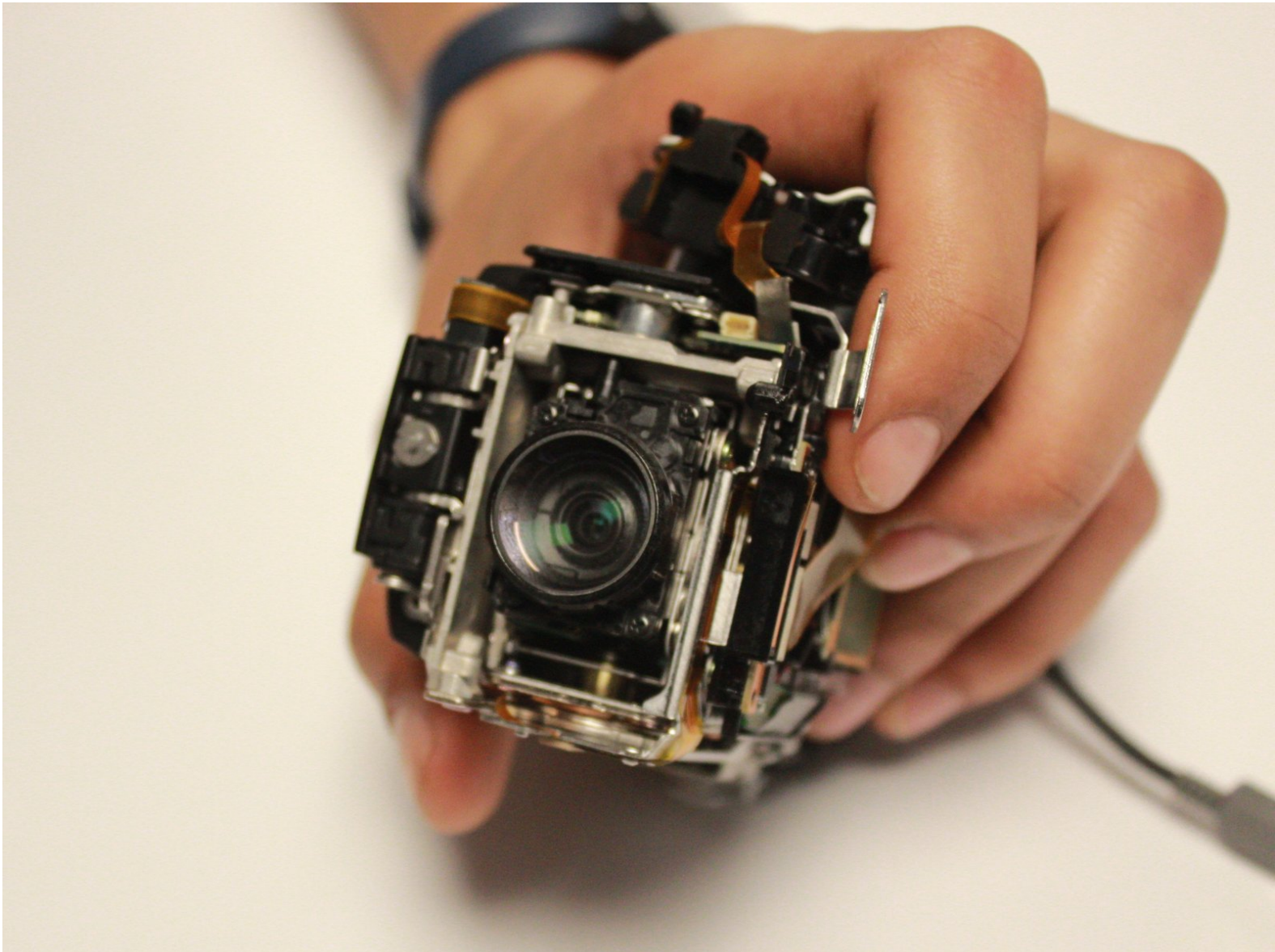




# Sony Handycam HDR-CX675 Lens Replacement

Follow this guide to replace/remove the lens for the Sony Handycam HDR-CX675.

Written By: Mohamed Nazer



---

## INTRODUCTION

Simply follow the steps in this guide to remove/replace the camera lens. It is a very easy and simple task.



### TOOLS:

- [iFixit Opening Tools](#) (1)
  - [JIS Driver Set](#) (1)
  - [Tweezers](#) (1)
-

## Step 1 — Camera Shell



- The battery should be removed and oriented upwards.

## Step 2



- Remove the side 4.5 mm JIS #00 screw using JIS Screwdriver
- Remove the 5.5 mm JIS #00 screw.



### Step 3



- Gently pry the plastic case surrounding the start/stop button free by using the blue plastic opening tools.
- Remove the casing using your thumb and index finger.

### Step 4



- Turn the camera around and flip open the LCD screen to expose the side panel.
- Remove the 5.5mm #00 screw using the J00 head screwdriver.

## Step 5



- Turn the camera to the handgrip side and unscrew two of the 5.5mm JIS #00 head screws using the JIS #00 head screwdriver.

## Step 6



- Remove the two 5.5mm JIS #00 screws with the bottom of the camera facing up.

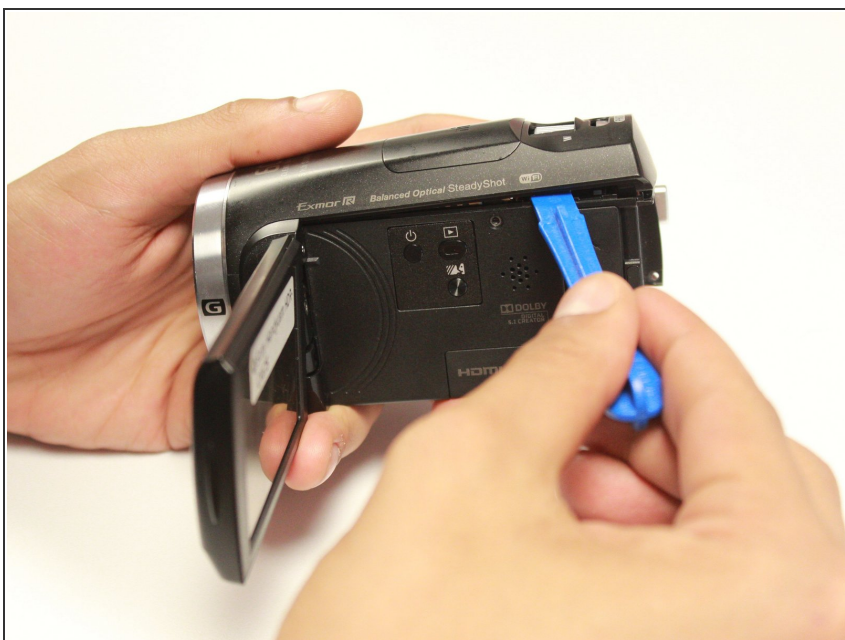


## Step 7



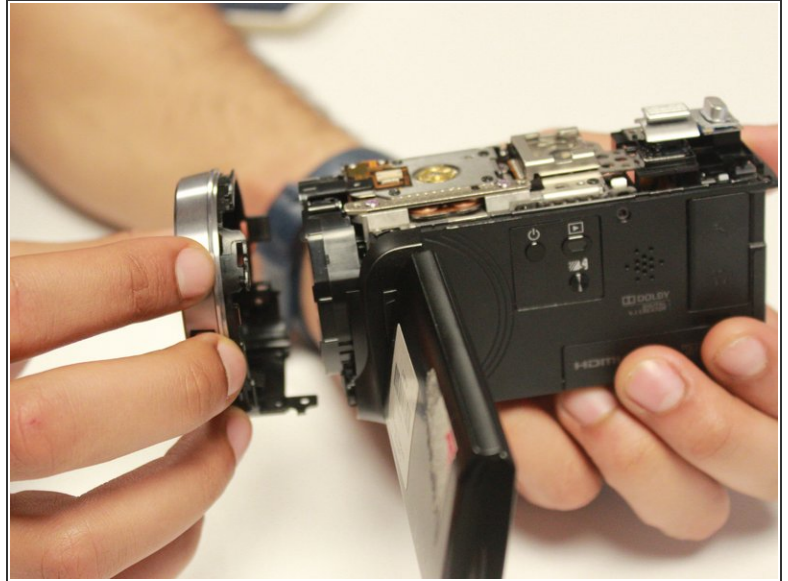
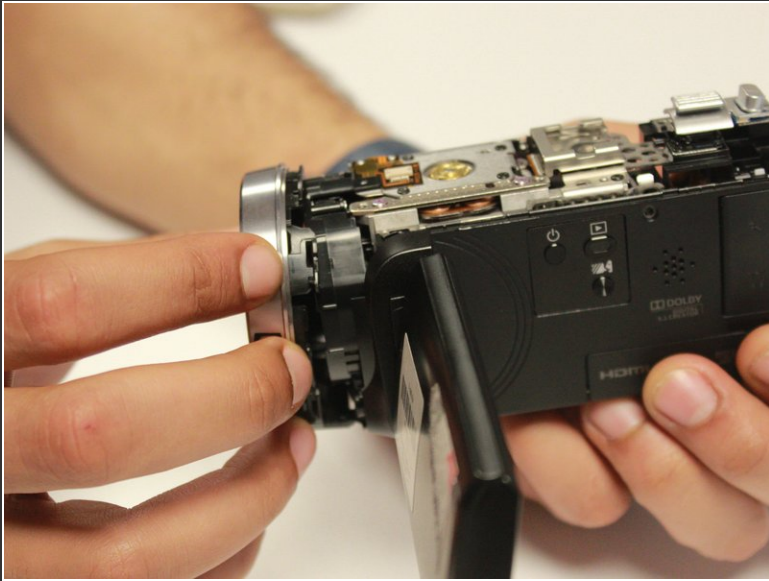
- Turn the camera around in a way that the bottom of the camera is facing you.
- Use the blue opening tool to gently remove the camera shell off of the camera.

## Step 8 — Lens Cover Panel



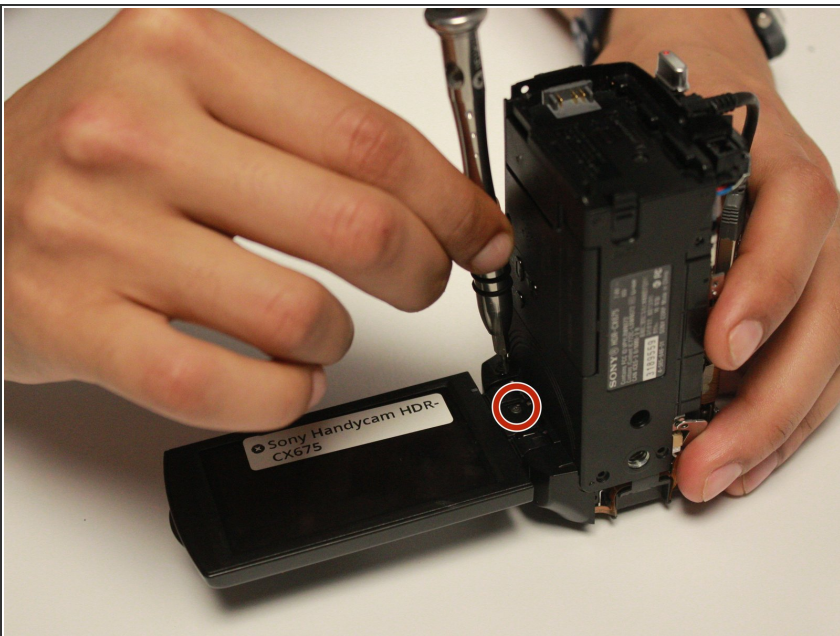
- Using the blue plastic opener smoothly to take the camera shell off.

## Step 9



- Let the lens of the camera be pointed to your left.
- Keep holding the camera with your right hand then gently remove the lens cover panel with your left hand.

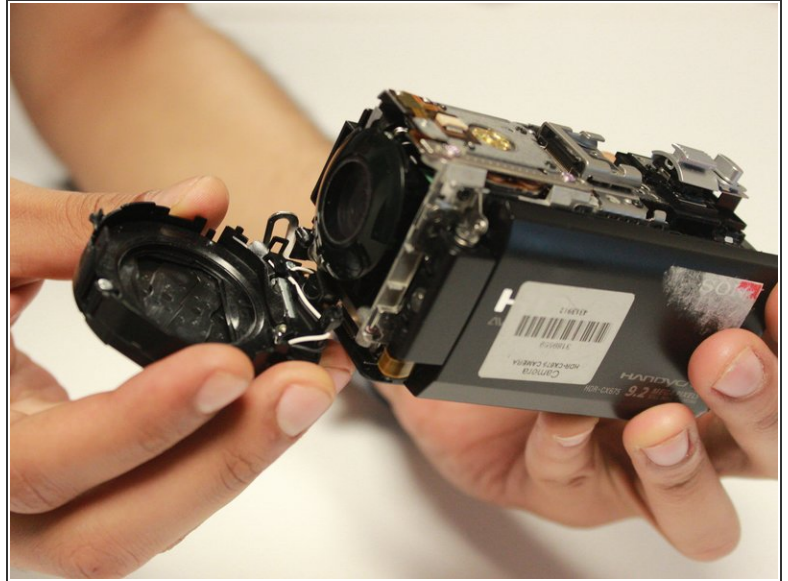
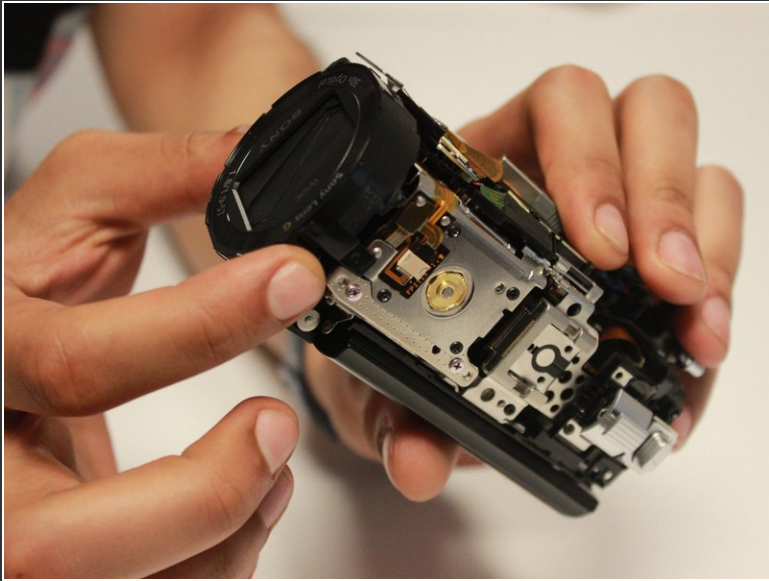
## Step 10 — Shutter Assembly



- Place the camera on its lens and keep the LCD screen open and pointed to your right.
- Remove the 5.5mm JIS #00 screws from the hinge of the camera.

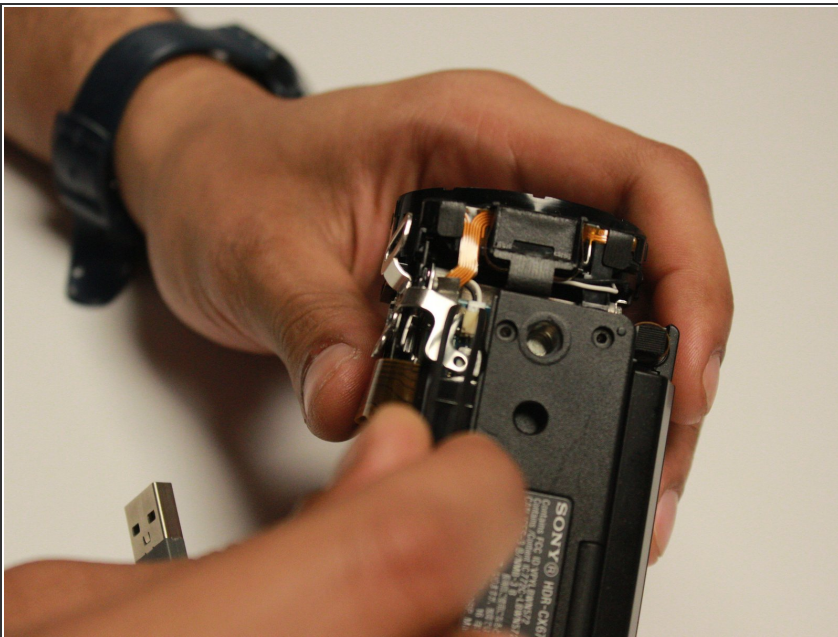


## Step 11



- Hold the camera with your left hand, and gently remove the shutter assembly part.

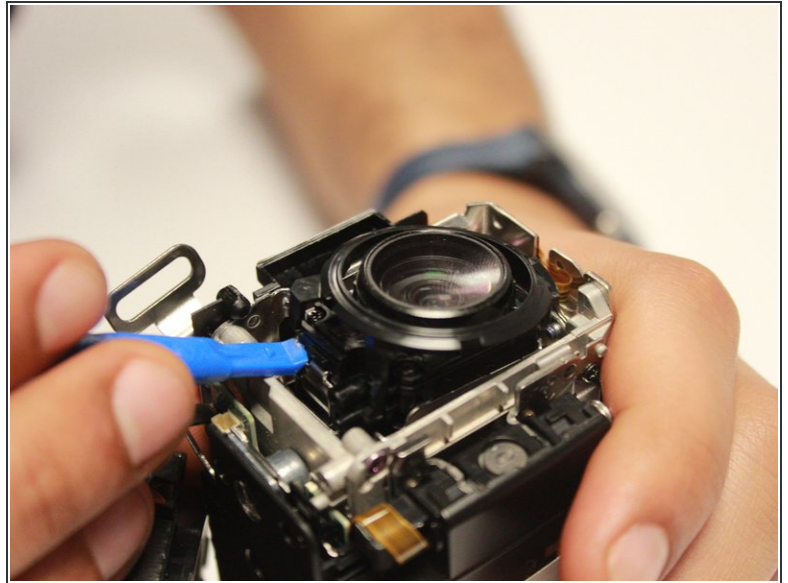
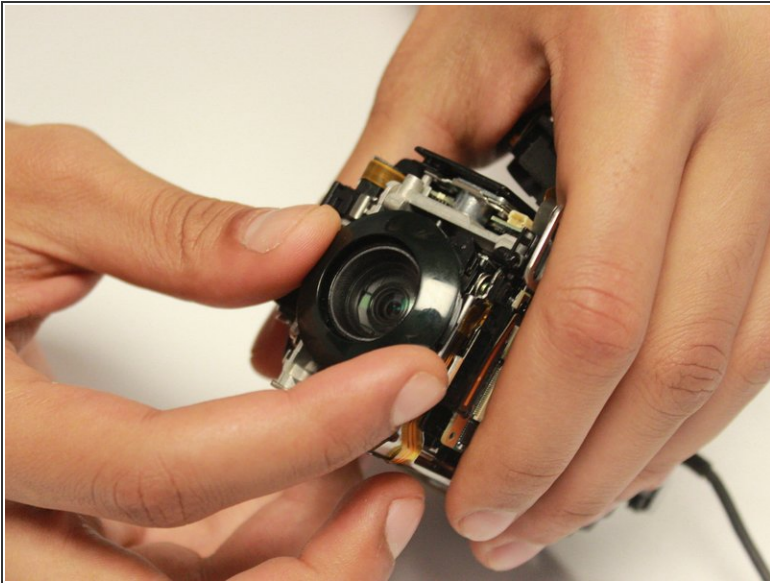
## Step 12



- Hold the camera that the bottom is upwards and lens pointed to your left hand.
- By the metal tweezers, remove the white wire that is connecting the shutter assembly and motherboard

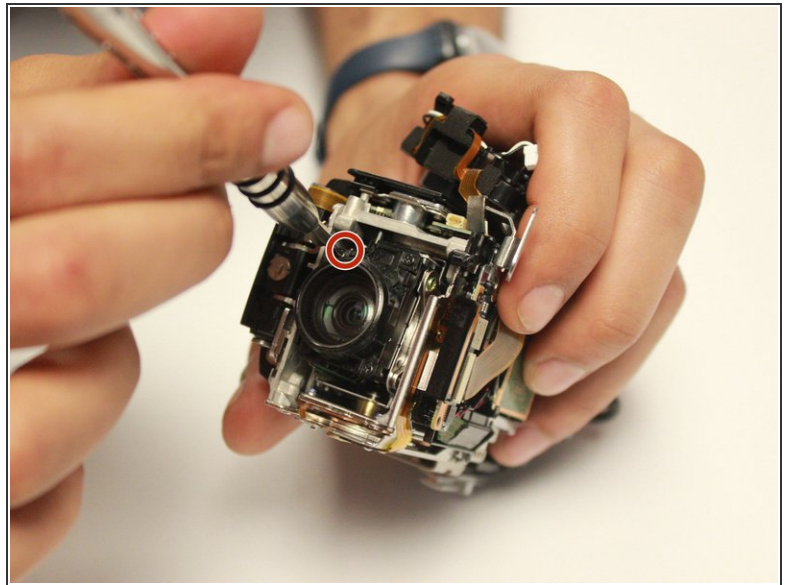
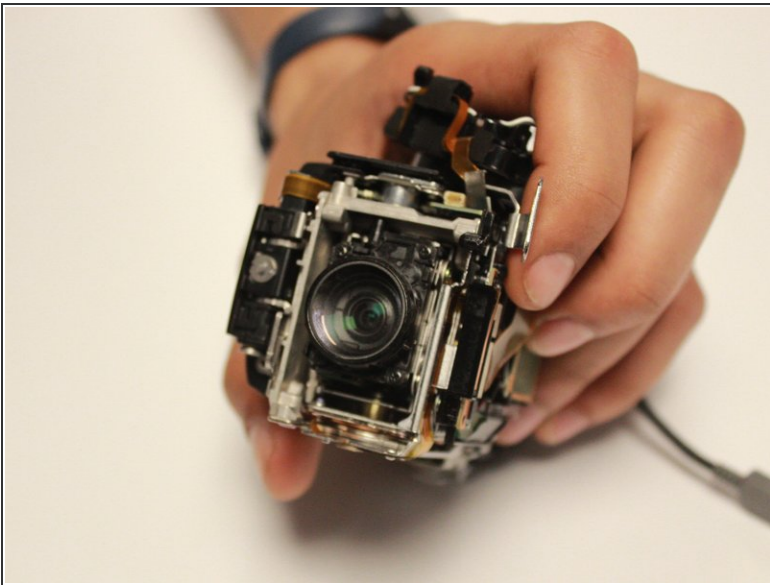


## Step 13 — Lens



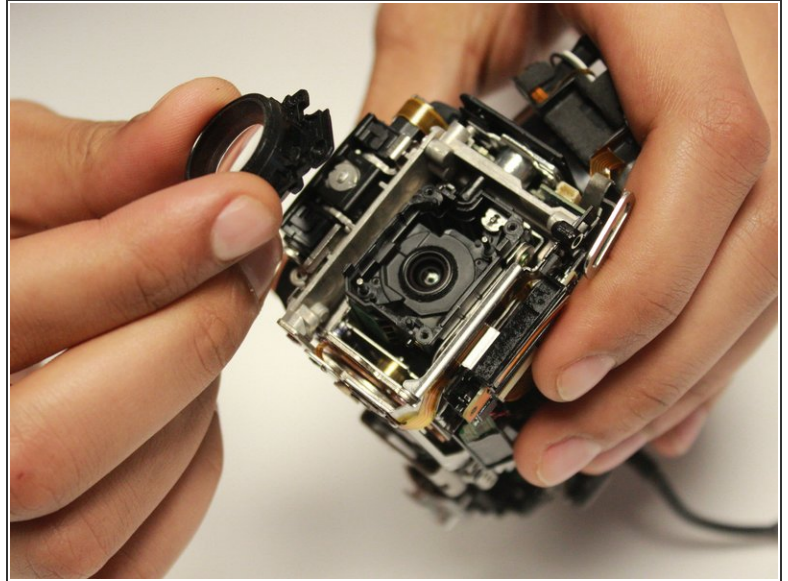
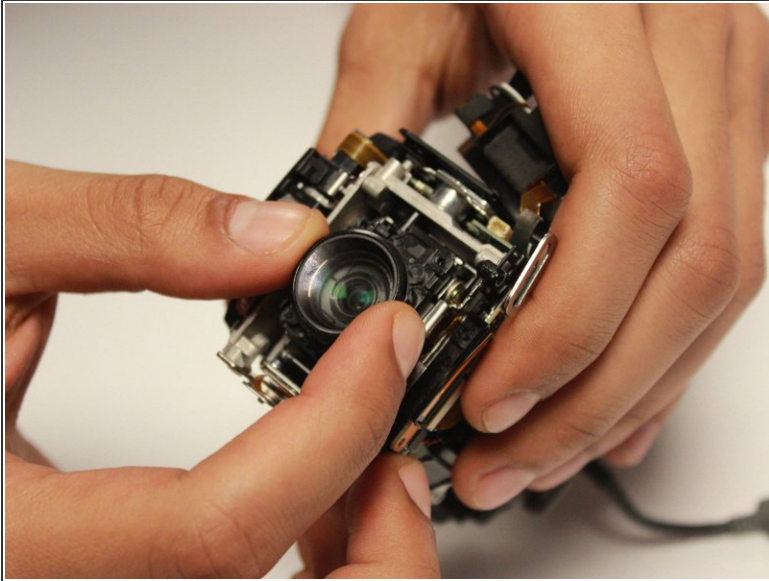
- Use two fingers to twist and loosen the lens cover.
- Remove the lens cover using the blue plastic opening tools.

## Step 14



- Unscrew the 5.5 mm JIS #00 screw that is holding the lens to the whole camera.

## Step 15



- The lens can easily be taken out.

To reassemble your device, follow these instructions in reverse order.