



# JBL Xtreme Speaker Replacement

This guide will show you how to remove the speakers of a JBL Xtreme.

Written By: Benny Huynh



---

# INTRODUCTION

This guide will offer sound advice to help you remove and replace your JBL Xtreme's speakers.

---



## TOOLS:

- [Magnetic Project Mat](#) (1)
  - [Metal Spudger](#) (1)
  - [Phillips #1 Screwdriver](#) (1)
-

## Step 1 — Cover



- Locate the seams next to the 'feet' on the bottom side of the device.

## Step 2



- Use the metal spudger to gently pry and lift the edge of the seam. The cover is held in place with plastic snaps that will make a popping noise when disengaged. !!Start with the back half, this will expose TWO Screws that need to be removed before lifting the front half.



### Step 3



- For the first part of the case: gently pull back the edges of the case rotating along the hinge opposite the opening seam illustrated in the second photo. Plastic snaps hold the cover in place.
- For the second part of the case: there are 2 screws to be removed at the seam. Once removed, the case will come off completely without forcing.

### Step 4 — Bass Radiator



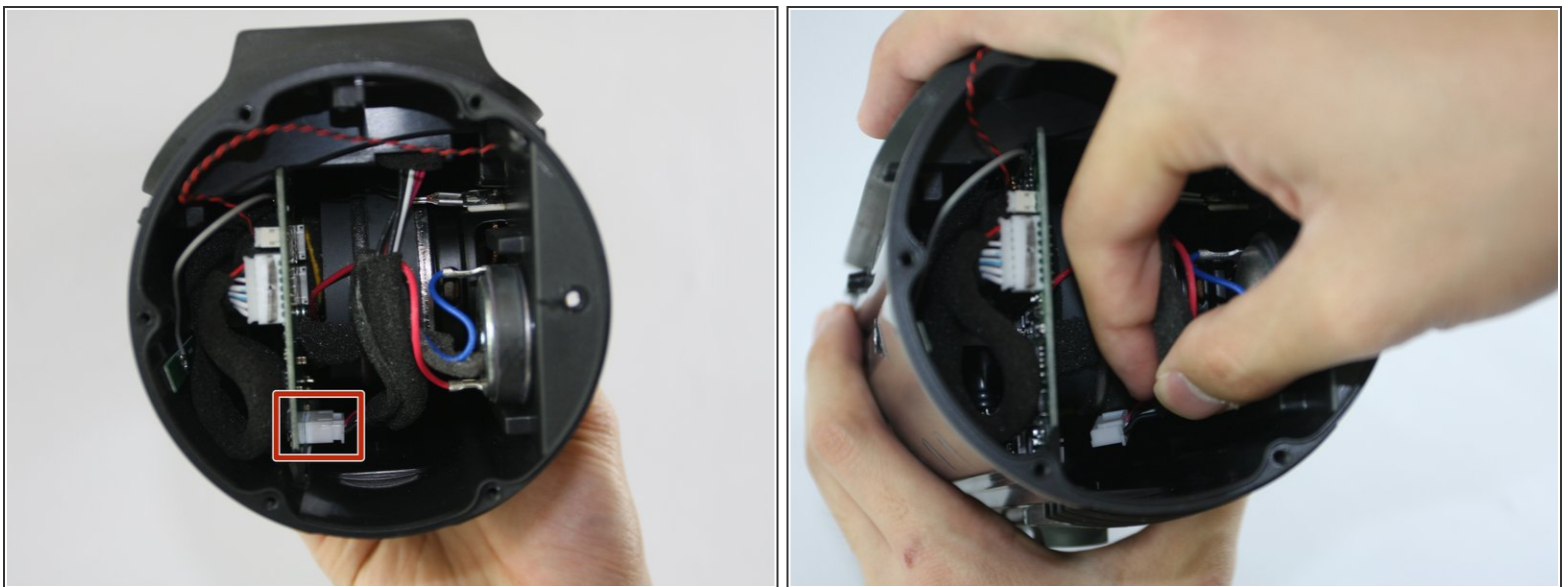
- Unscrew the six 9.75mm Phillips head screws holding the bass radiator in place.
- ⓘ Three of the five outer screws are indicated in the first image and the sixth inner screw is indicated in the second image.

## Step 5



- Once the screws have been removed, the bass radiator will easily lift free.
- ⓘ Both radiators are identical. Repeat the above steps on the opposite radiator if necessary.


## Step 6 — Speaker



- With the radiators removed, locate the ribbon cable indicated in the image.
- ⓘ Gently unplug the cable from the motherboard.

## Step 7



- First, unscrew the eight 12.93mm Phillips head screws indicated in red. These screws hold the two primary speakers in place.
  - Next, remove the four 9.75mm Phillips head screws for the two smaller speakers indicated in blue and the speakers should lift out with little effort.
-  All speakers are connected via the single cable highlighted in the previous step.

To reassemble your device, follow these instructions in reverse order.