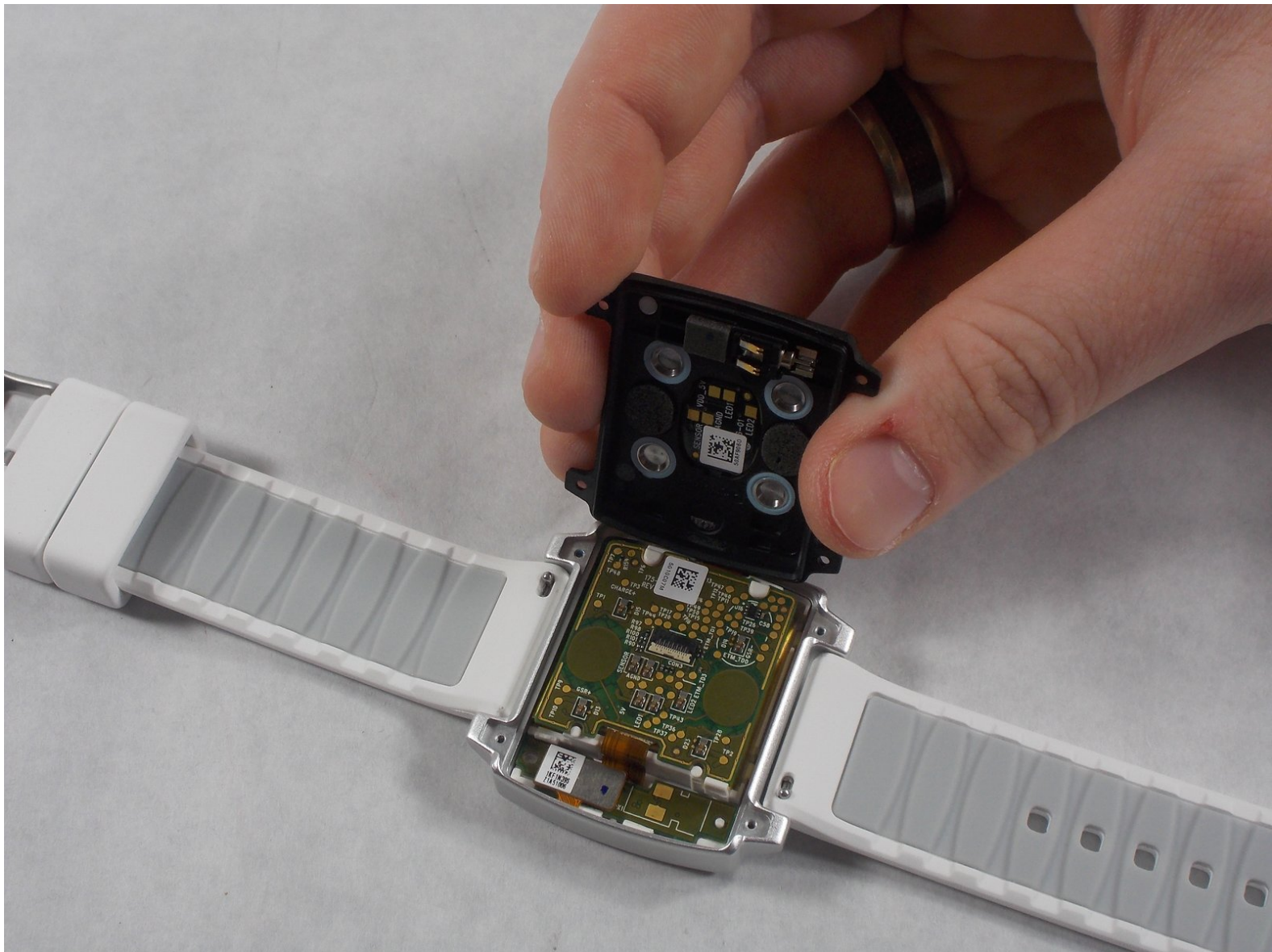




# Basis Peak Motherboard Replacement

This guide will show you how to replace the motherboard component for the Basis Peak.

Written By: Michael Tierney



---

## INTRODUCTION

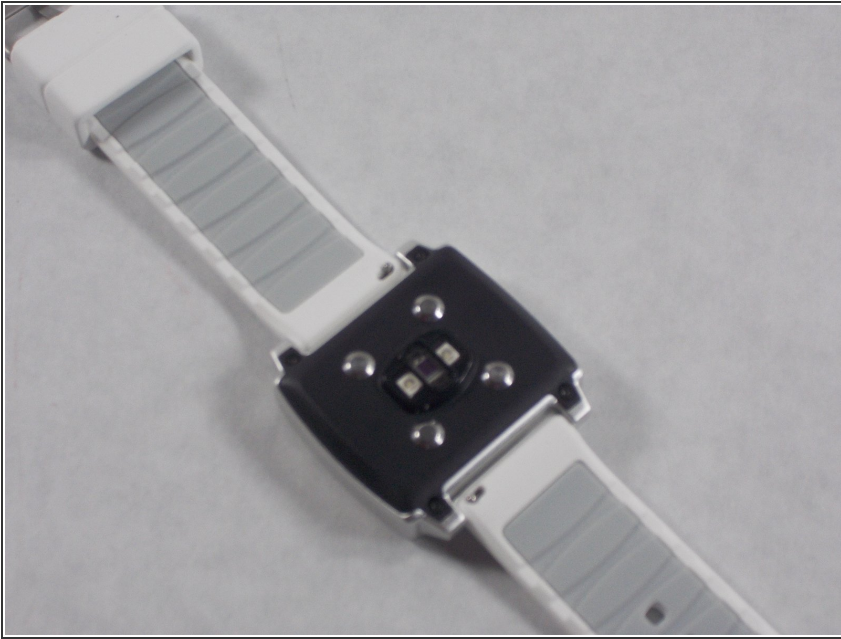
The motherboard of the Basis Peak can be replaced to get the device working good-as-new. This guide will show you step by step how to remove the motherboard for replacement. The back plate must be removed to first allow the electronics to be removed from the frame. Following this, several cables must be detached to separate the motherboard from the rest of the electronics.



### TOOLS:

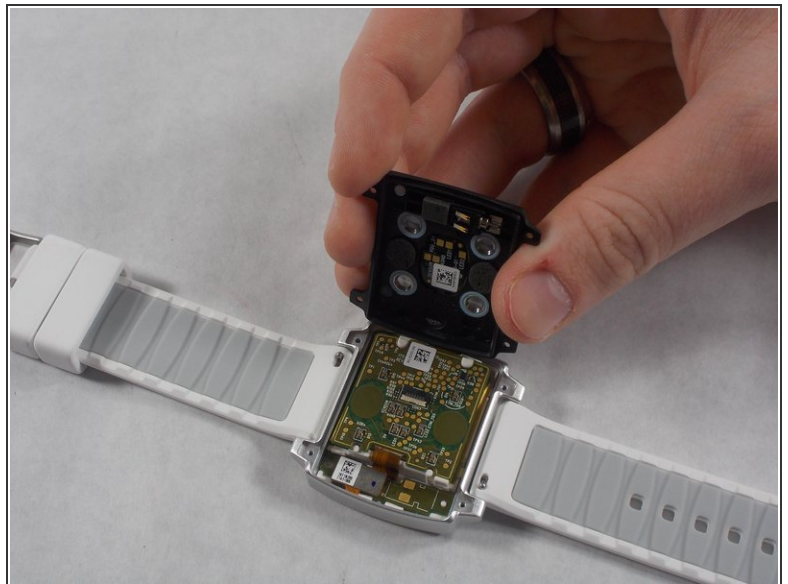
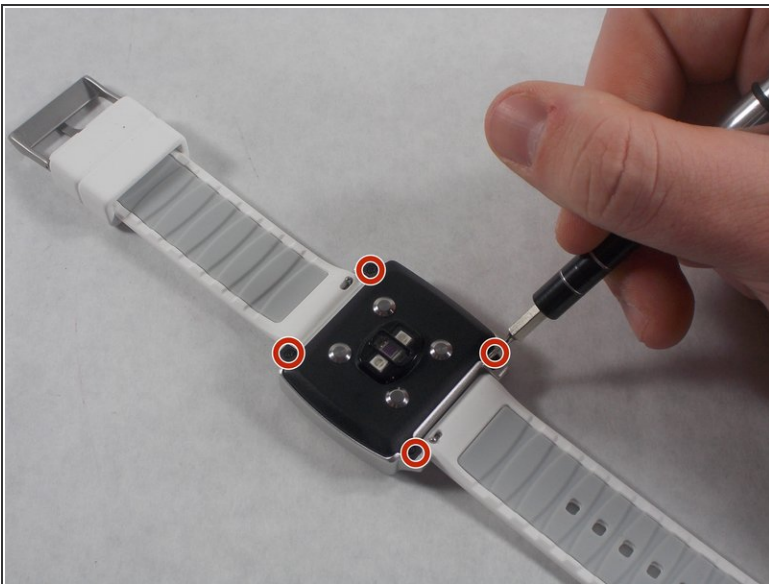
- [T2 Torx Screwdriver](#) (1)
  - [Heavy-Duty Spudger](#) (1)
-

## Step 1 — Frame



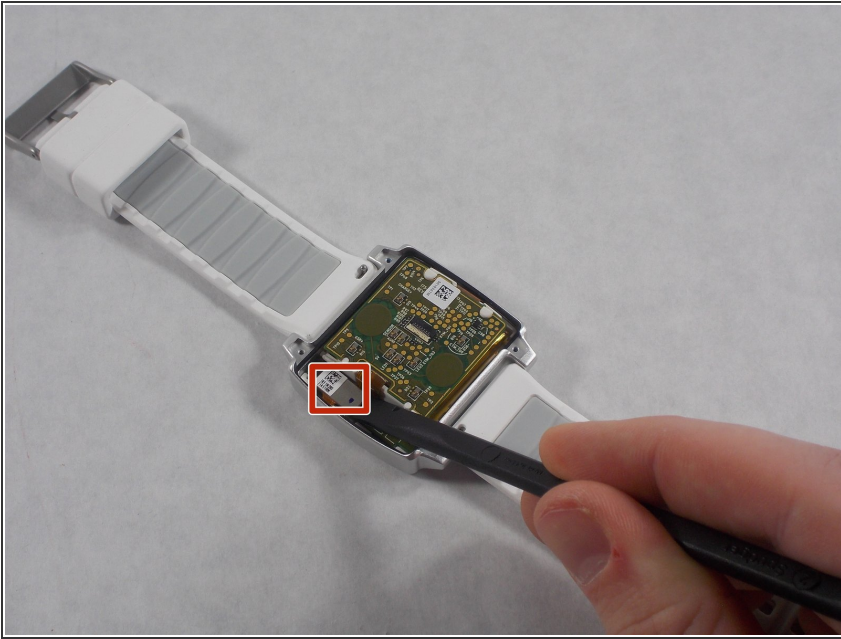
- Flip the watch over and orient it such that the buckle is away from you and the back panel is revealed.
- ⓘ Maintain this orientation to follow the guide.

## Step 2



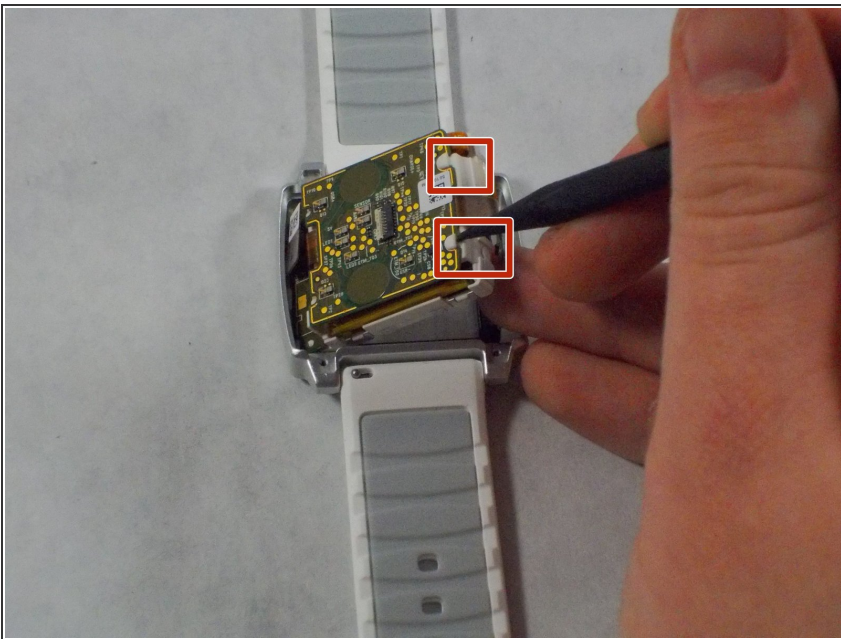
- Remove the four base screws using a size 2 TORX screwdriver to separate the back plate from the frame.

### Step 3



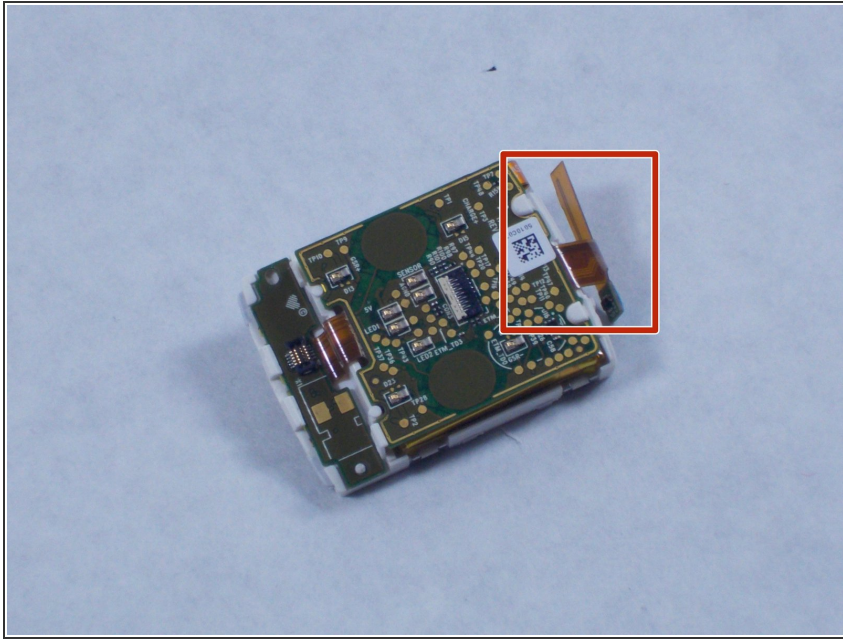
- Disconnect the ribbon cable on the left side of the motherboard by using a spudger.

### Step 4



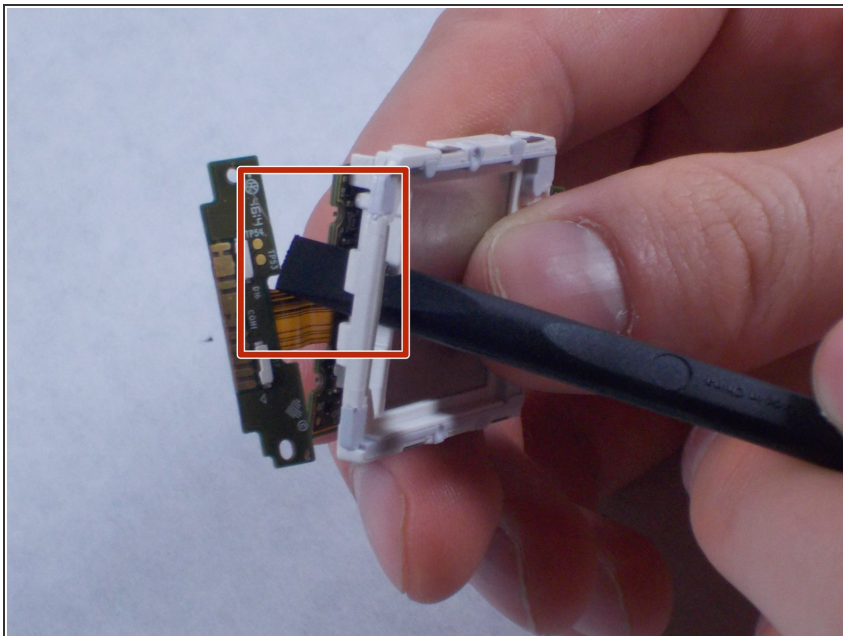
- Use a spudger and apply pressure to the white plastic wall to the right of the motherboard. Use this to lever the electronics out of the frame.
- ⓘ The clips have small lips that you can put the spudger under to get more leverage.
- ⚠ Using any of the metal to pry out the electronics may damage some of the wiring. It is crucial to only press on the plastic.

## Step 5 — Motherboard



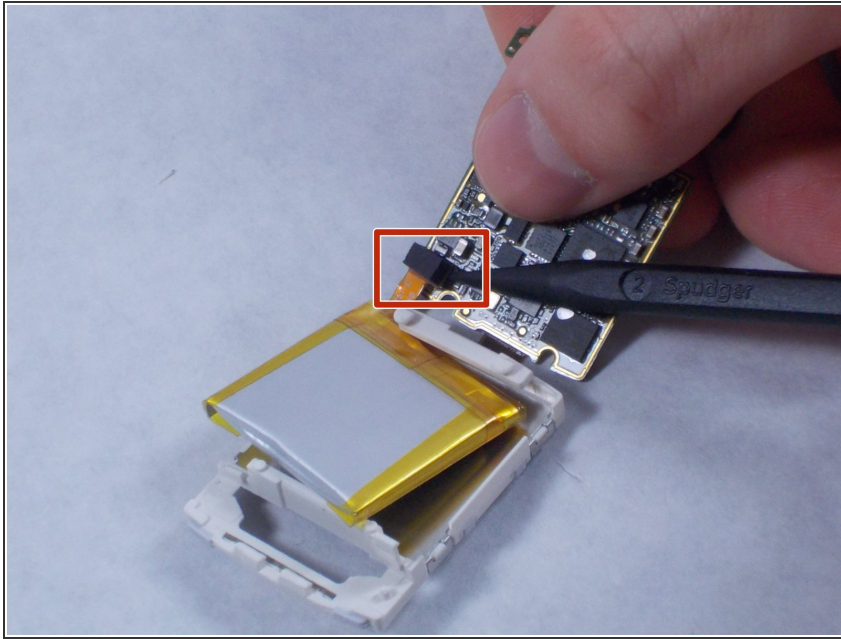
- Remove the right side ribbon cable by pulling it off with your fingers.

## Step 6



- Use the spudger tool to poke out the exposed motherboard section as seen in the photo.
- ⚠ As always be careful when disconnecting the cables or batteries.

## Step 7



- Put a nylon spudger underneath the battery's press-fit connector and lift up to free the ribbon cable and motherboard.

⚠ As always be careful when disconnecting the cables or batteries.

To reassemble your device, follow these instructions in reverse order.