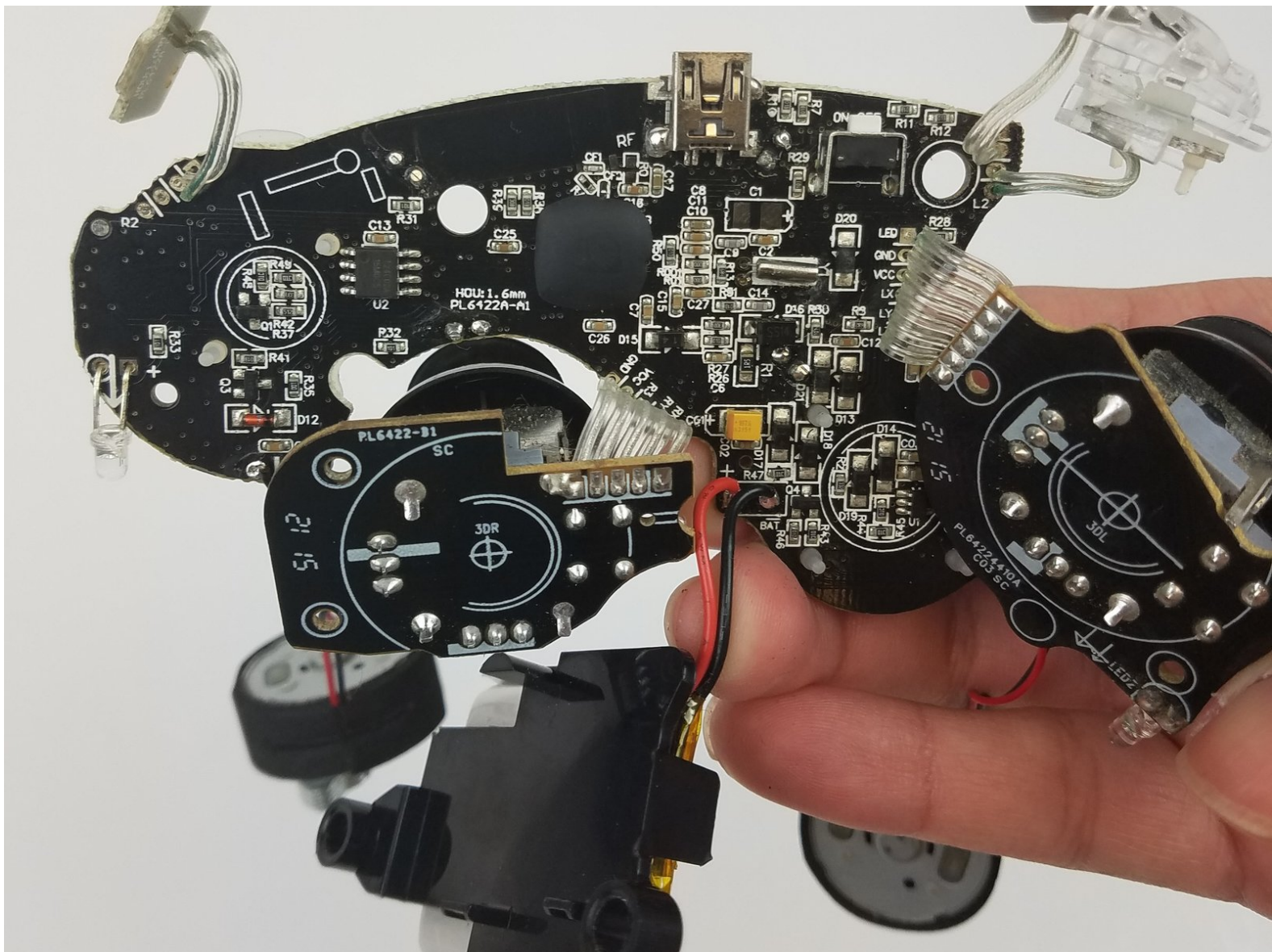




Afterglow Wireless PS3 Controller Motherboard Replacement

This guide will show how to replace the motherboard from Afterglow Wireless PS3 Controller.

Written By: Natalie Cox



INTRODUCTION

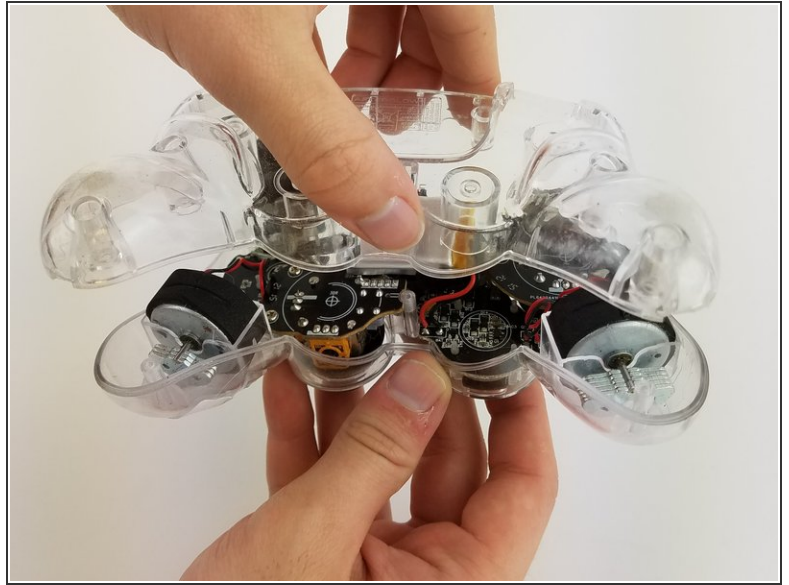
The replacement of the motherboard requires the complete removal of the battery, trigger buttons, joy sticks, and vibrations motors. All of which will require soldering for removal.



TOOLS:

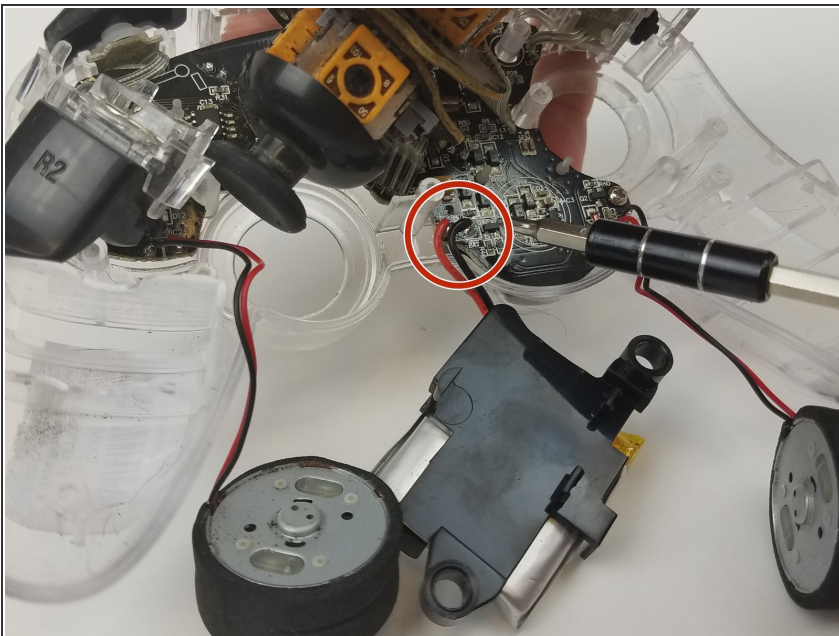
- [Phillips #0 Screwdriver](#) (1)
-

Step 1 — Back Cover



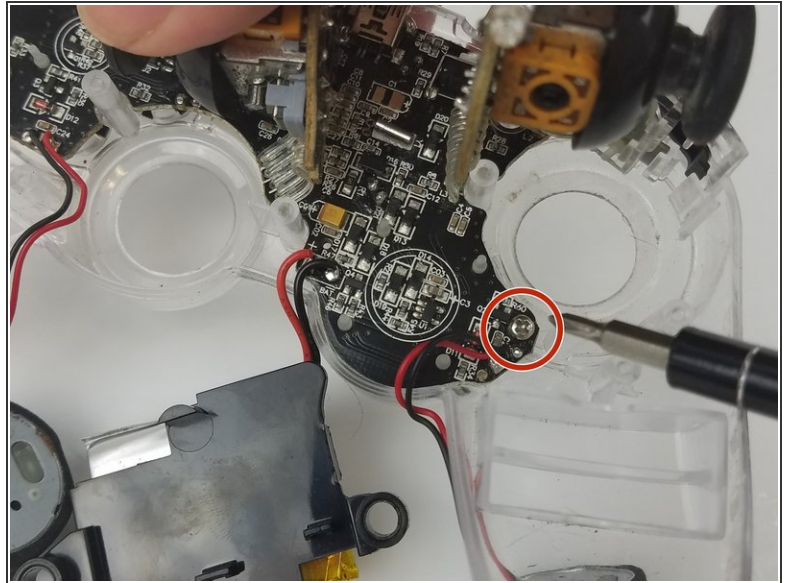
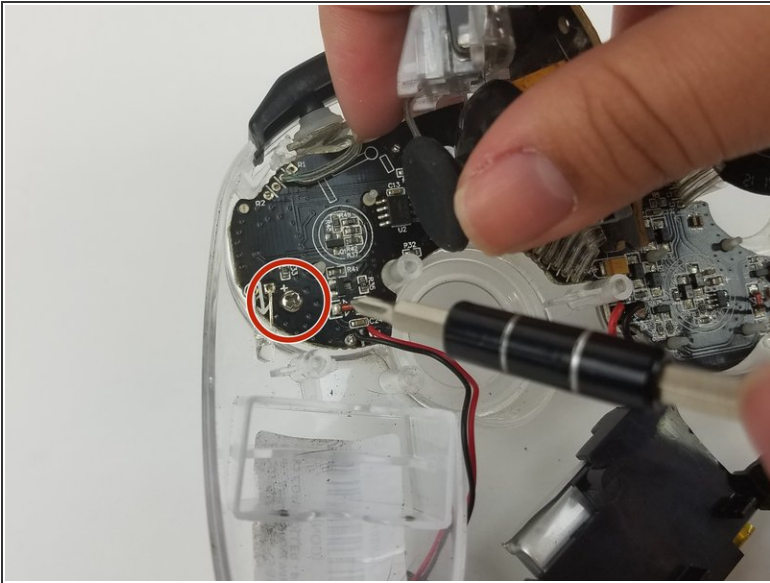
- Lay the controller face down on a flat surface and remove the seven 9mm Phillips #0 screws on the back of the controller.
- Lift up and remove the controller back plate.

Step 2 — Motherboard



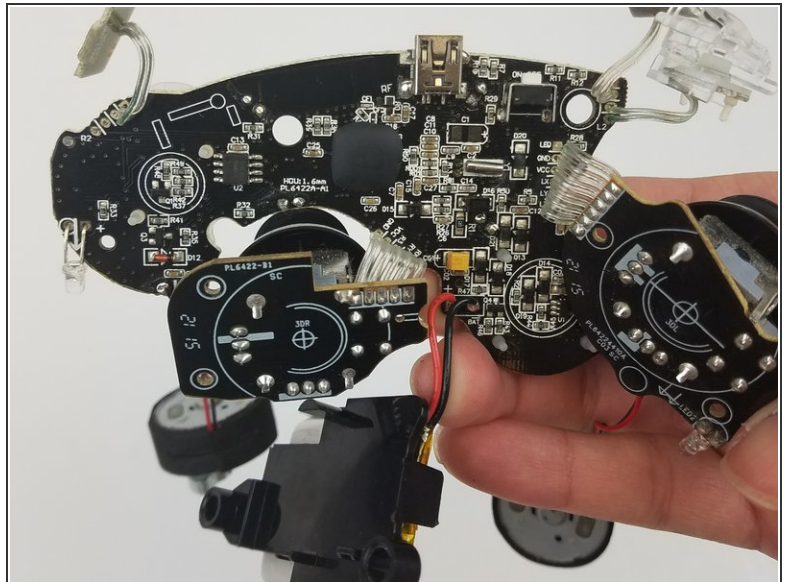
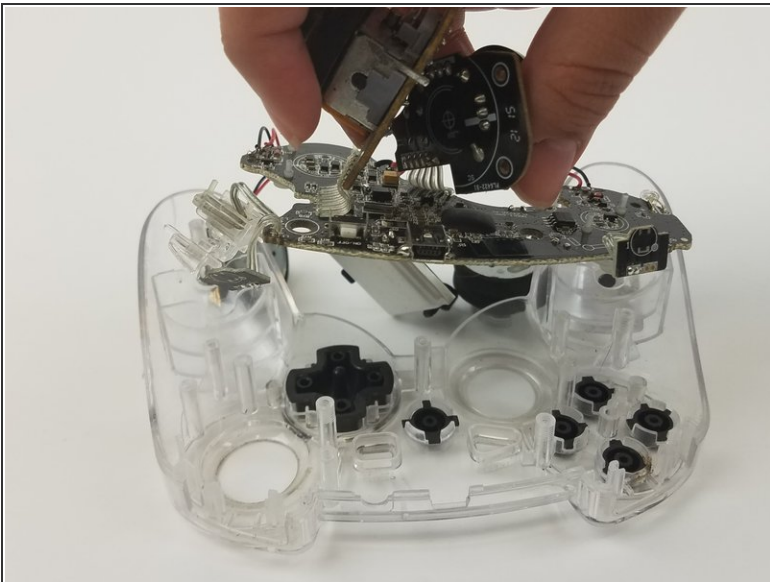
- Desolder the battery connection from the motherboard.
- ① Use [this guide](#) for more information on soldering.

Step 3



- Unscrew the two 9mm Phillips #0 screws that secure the motherboard to the controller front plate.

Step 4



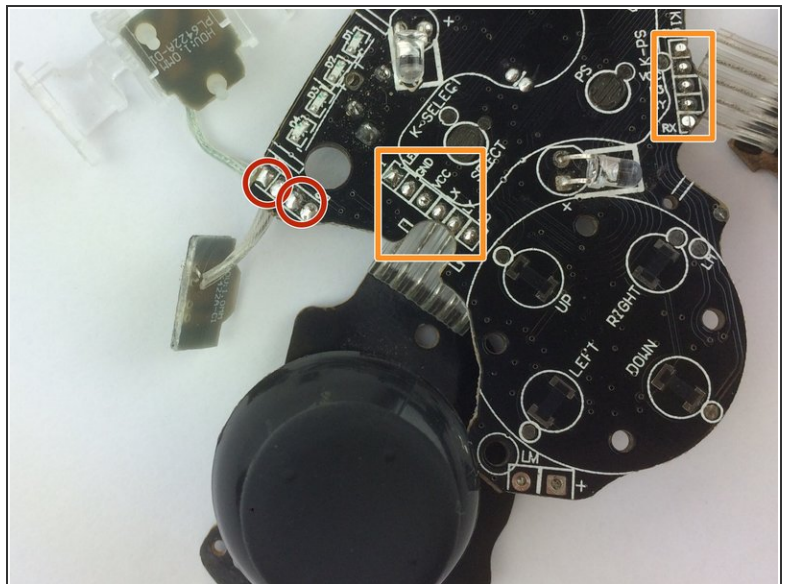
- Detach the main motherboard from the front plate by carefully pulling it off.
- ⚠ Be careful of the trigger buttons when pulling out the motherboard. The buttons have mini-motherboards secured in place on the front plate. Carefully pull these out.


Step 5



- Remove two button padding from the back of motherboard.

Step 6



- Desolder the four button connections from the motherboard.
 - Desolder the joy stick connections located on the front.
-  Use [this guide](#) for more information on soldering.

To reassemble your device, follow these instructions in reverse order.