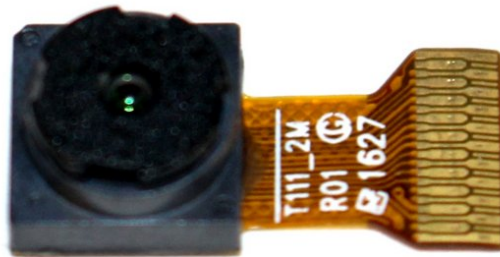




# Samsung Galaxy Tab E Lite 7 Kids Camera Replacement

This guide will help you replace the camera out of the Samsung Galaxy Tab E Lite 7 Kids.

Written By: Jordan Bermudez



---

## INTRODUCTION

This replacement guide will show you how to replace the camera in your Samsung Galaxy Tab E Lite 7 Kids. You will need to follow the instructions carefully as to not damage any fragile components in your tablet.




### TOOLS:

- [iFixit Opening Tools](#) (1)
  - [Tweezers](#) (1)
  - [Phillips #000 Screwdriver](#) (1)
-

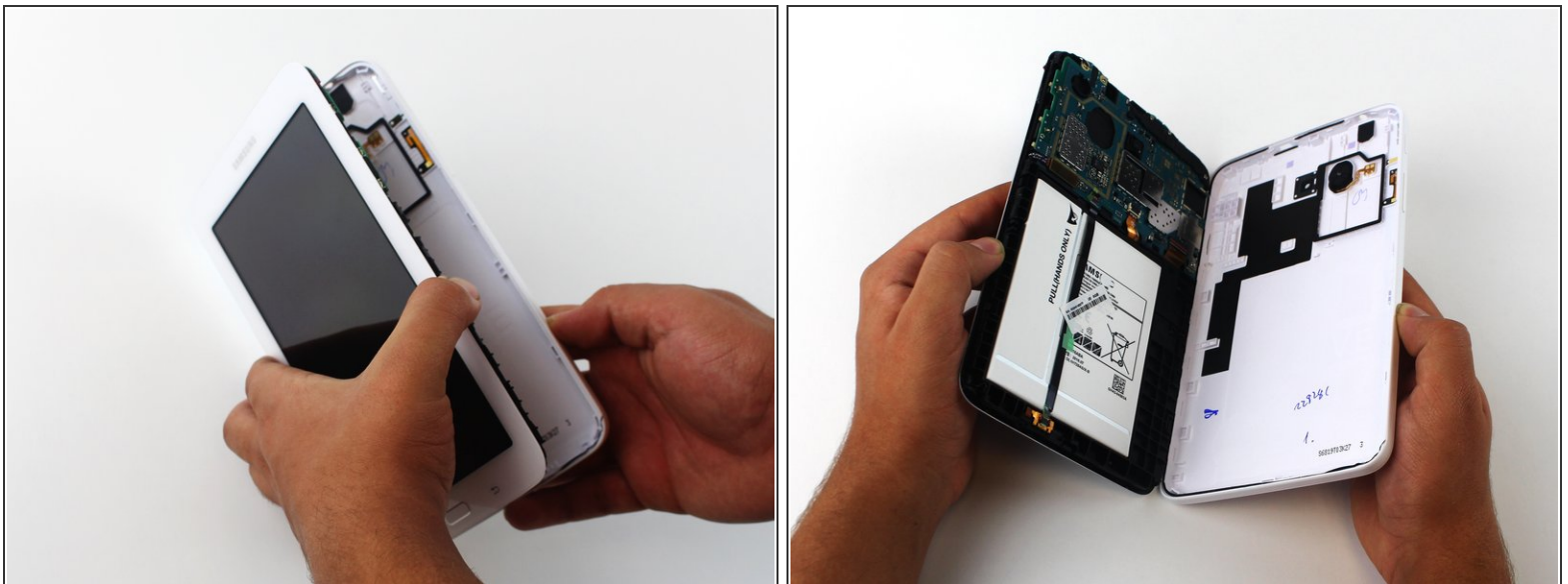
## Step 1 — Rear Case



 Make sure the device is turned off before attempting to disassemble it.

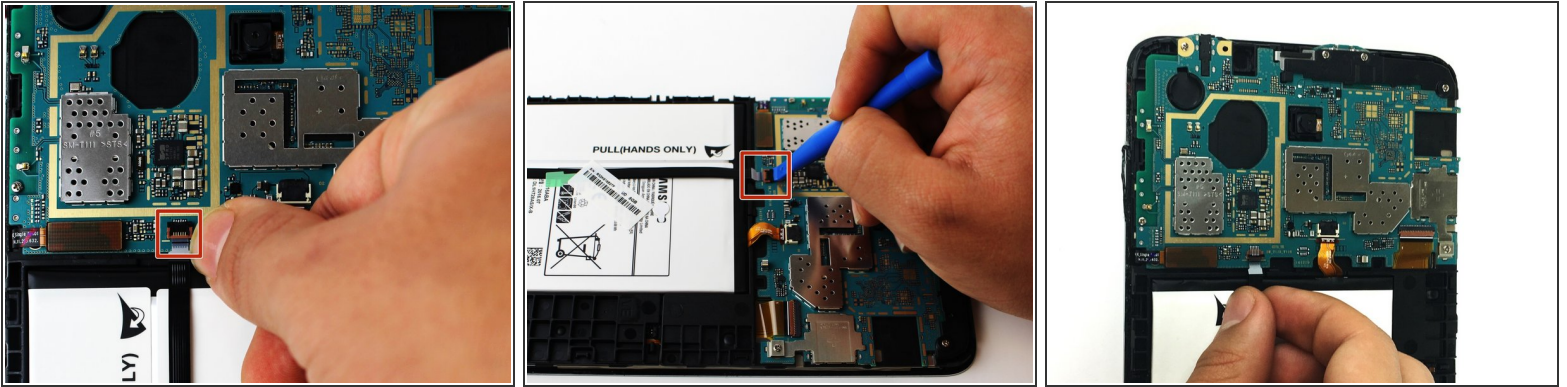
- Using a plastic opening tool, wedge in the seam between the screen and the case.
- Rock the tool by moving it towards and away from the middle of the screen, trying to separate the tape holding the screen and case together.

## Step 2



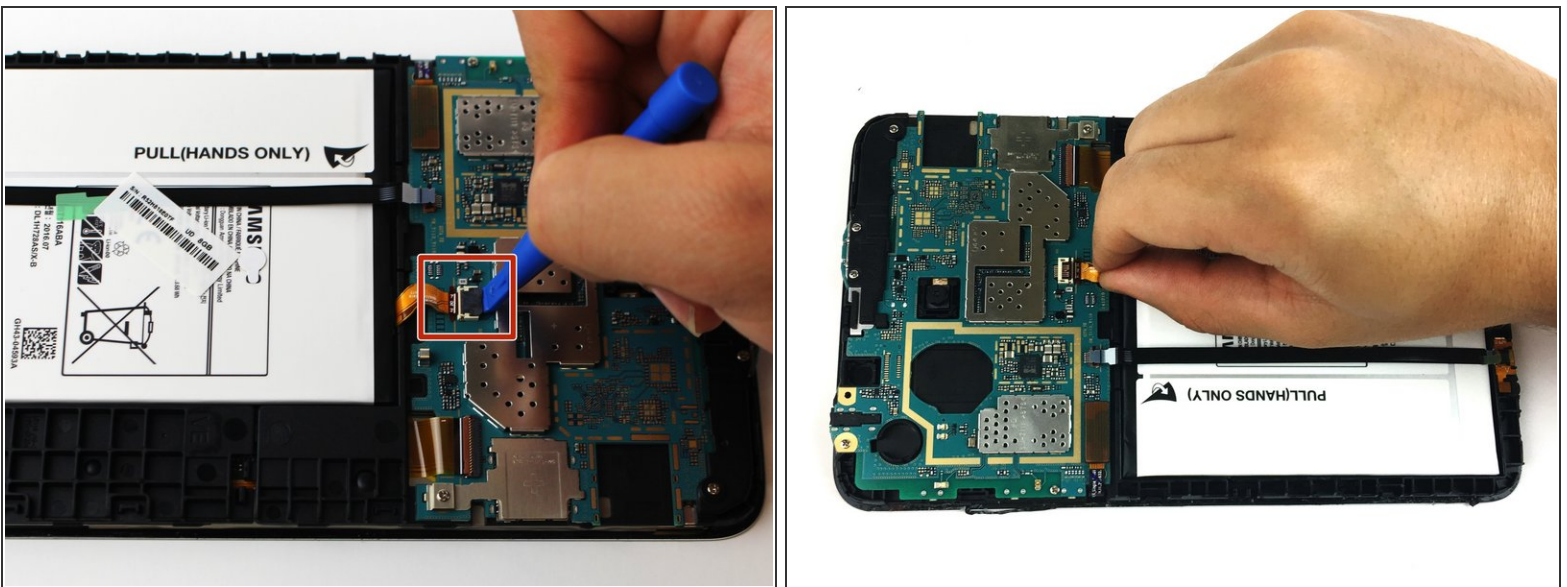
- After separating the latches holding the screen and case together, slowly take the screen off the case.

## Step 3 — Motherboard



- Use the plastic opening tool to lift up the black ZIF (zero insertion force) connector.
- Use your hands to pull the black cable out of its slot.

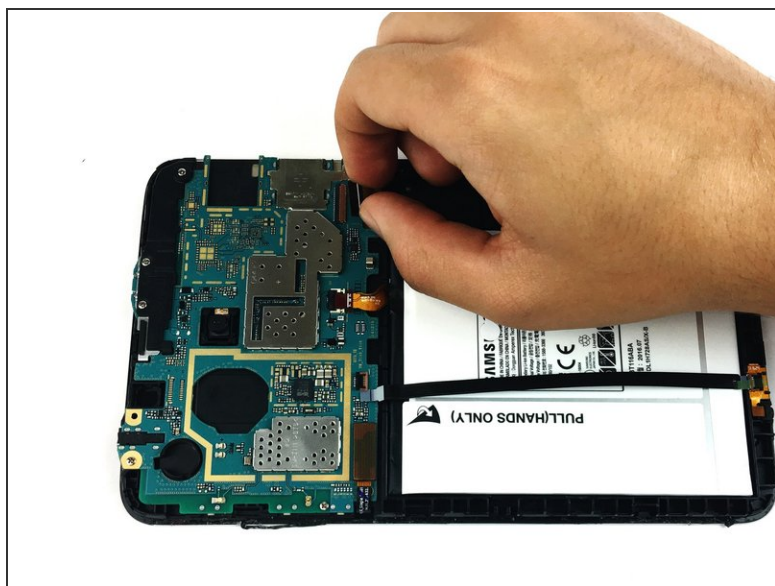
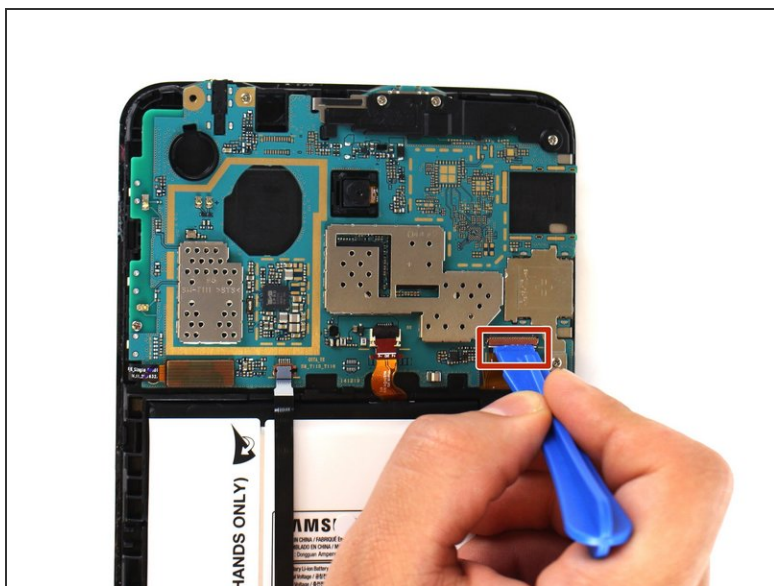
## Step 4



- Use the plastic opening tool to lift the ZIF (zero insertion force) connector holding the ribbon cable.
- Pull out the battery's ribbon cable.



## Step 5



- Use the plastic opening tool to lift up the latch to the ribbon cable.
- Remove the ribbon cable from the connector.

## Step 6



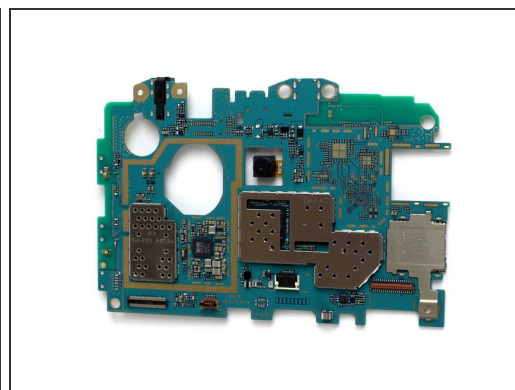
- Remove the seven 4mm PH000 screws holding the motherboard in place.

## Step 7



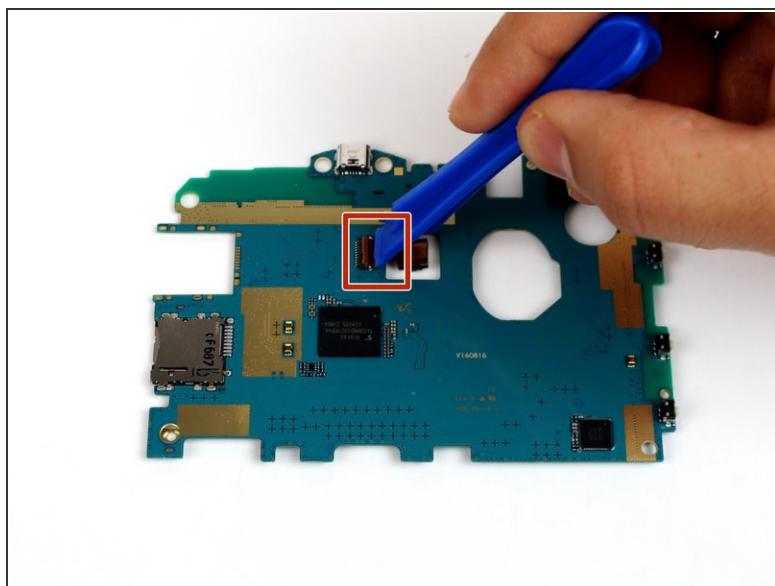
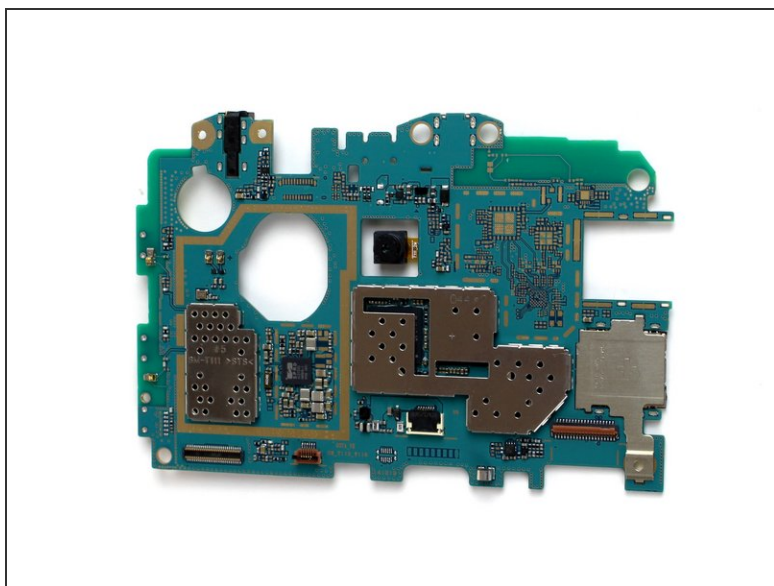
- Use the plastic opening tool to pry up the tab holding the motherboard in place.

## Step 8



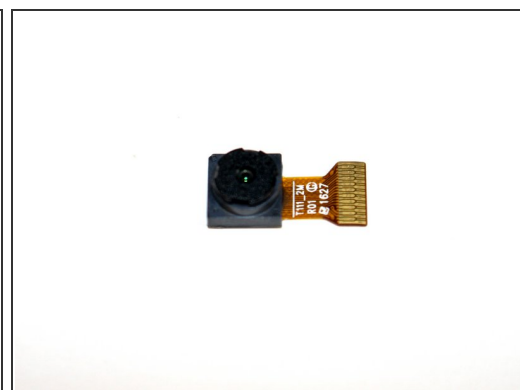
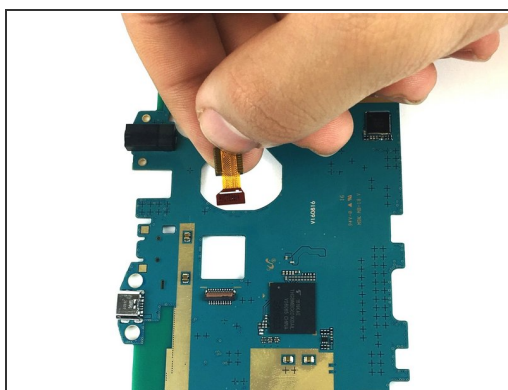
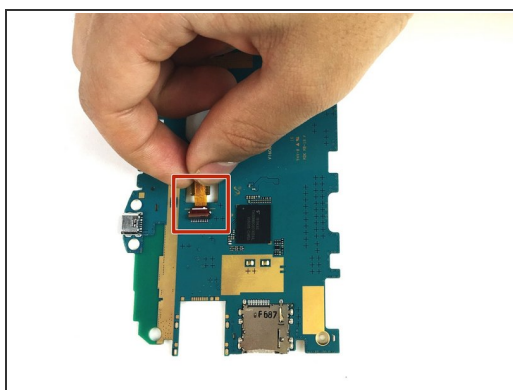
- Use the precision tweezers to remove the black plastic corner on top of the motherboard.
- Use the plastic opening tool to pull the motherboard out of the case.

## Step 9 — Camera



- Flip the motherboard over.
- Use a plastic opening tool to lift up the latch holding the camera cable.

## Step 10



- Pull the ribbon cable and the camera.

To reassemble your device, follow these instructions in reverse order.