



Bose SoundLink Mini II Speaker Replacement

In this guide we will be disassembling the...

Written By: Tyler Roessler



INTRODUCTION

In this guide we will be disassembling the whole device to replace the speaker. It is very important to keep track of all the components and screws while following these instructions.

Note: This procedure requires removing and reinstalling the battery, which requires the use of a [soldering iron](#) and/or a lot of careful disassembly.

TOOLS:

[Mako Driver Kit - 64 Precision Bits](#) (1)

[TR9 Torx Security Screwdriver](#) (1)

[Metal Spudger](#) (1)

[Soldering Iron 60w Hakko 503F](#) (1)

[Desoldering Braid](#) (1)

[Lead-Free Solder](#) (1)

Step 1 — Battery



- Flip the speaker over onto its back.

Step 2 — Remove the rubber base



- Gently remove the rubber base from speaker by pulling around the edges.

Step 3







- Remove the four 6mm T9 Torx bit screws from the corners of the battery.

Step 4



- Carefully lift the battery from the side nearest the four gold contact pins, but don't try to fully remove it yet.
- ⓘ At this point, the battery remains connected via four wires to the power supply board.
- Carefully desolder the four wires from the power supply board in order to completely detach the battery. There is very little room for the soldering iron without damaging the case or the board; you may want to remove the board first.
- For help with soldering, see the [soldering guide](#).
- ⓘ Alternatively, you may remove the battery and power supply board together, without any soldering, but access requires some [additional disassembly](#) while carefully leaving the battery connected via the wires the entire time.

Step 5 — Bose Technicians' Instruction Manual

<p>entering the unit. Use a vacuum to remove any metal shavings.</p> <h3>1. Grille Removal</h3> <p>Note: The grille is held in place by Pressure Sensitive Adhesive (PSA) strips located in the center of the grille (figure 5.) and also by two tabs on either end of the grille (figure 3).</p> <p>To avoid destroying the grill during the removal process, brush alcohol over the PSA strips (figure 5) before attempting to remove it.</p> <p>Important Note: To avoid damage to the cabinet, do not use the cabinet as a pry point to remove the grille.</p> <p>1.1 At the location shown in Figure 3, insert the tip of a plastic tool, such as a spudger, between the grille and its rubber gasket.</p> <p>Note: The location shown is between the PSA and grille tabs securing the grille.</p> <p>1.2 Rotate the spudger away from you while prying against the rubber gasket. Figure 4.</p> <p>1.3 Once a portion of the grille is released, grasp the grille and pull it across the unit lengthwise to release the PSA. Figure 5.</p> <h3>2. Battery Removal</h3> <p>The Battery in SoundLink® Mini II is hardwired to the Board PCB. See Figure 6. Place the product in</p>	 <p>Figure 3.</p>  <p>Figure 4.</p>  <p>Figure 5.</p> 
---	--

- Bose Technicians Instruction Manual: <https://riverparkinc.com/wp-content/uplo...>

Step 6 — Speaker



- Removing the device front grille with a metal spudger, starting in one corner and working around the border.

⚠ The grille is easily bent and deformed.

Step 7



- Remove the rear grille with a metal spudger, starting in one corner and working around the border.

⚠ The grille is easily bent and deformed.

Step 8



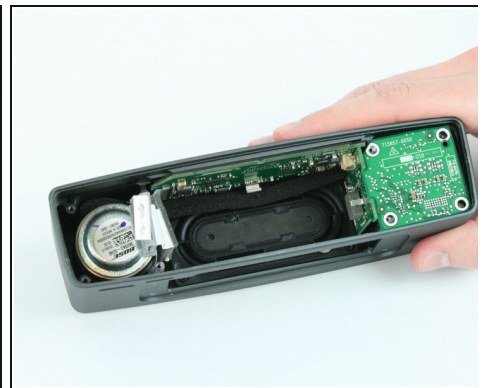
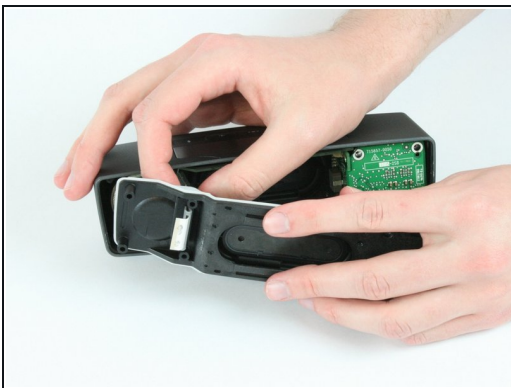
- Remove the eight 9mm T9 screws.

Step 9



- Use the metal spudger to release ribbon cable retainer.
- Detach the ribbon cable from the circuit board by sliding out from board connector.

Step 10



- Pull the ribbon cable through the rear case wall.

Step 11



- Remove the top circuit board by lifting up.
- Disconnect the wired pair from board upon removal.

⚠ There is a non latched connector connecting the top board to side board. Be careful to not damage this connector during the removal process.

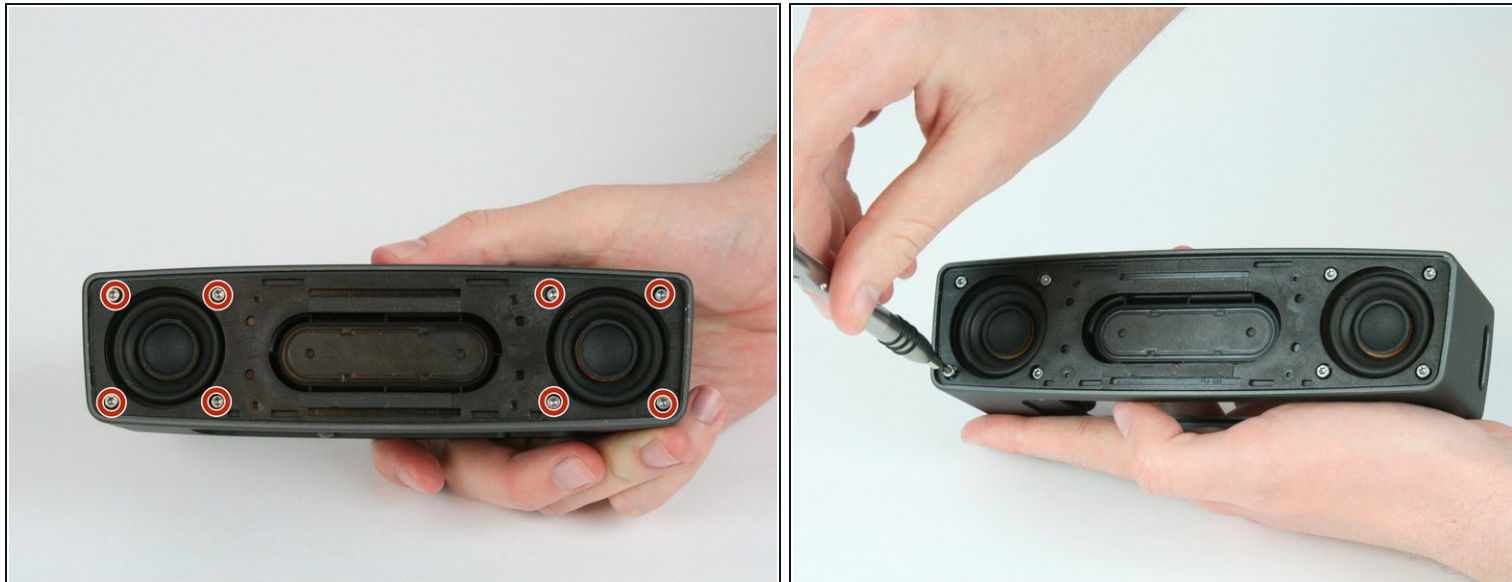
Step 12



- Remove the power supply board by sliding it outward from the device.
- ⓘ This is the board that was previously soldered to the battery.

⚠ There is a non latched connector connecting the side board to button board. Be careful to not damage this connector during the removal process.

Step 13



- Remove the eight 9mm T9 Torx screws from the front of the device.

Step 14



- Use the metal spudger to remove the front case panel.

Step 15



- Remove the speakers from the case.

To reassemble your device, follow these instructions in reverse order.