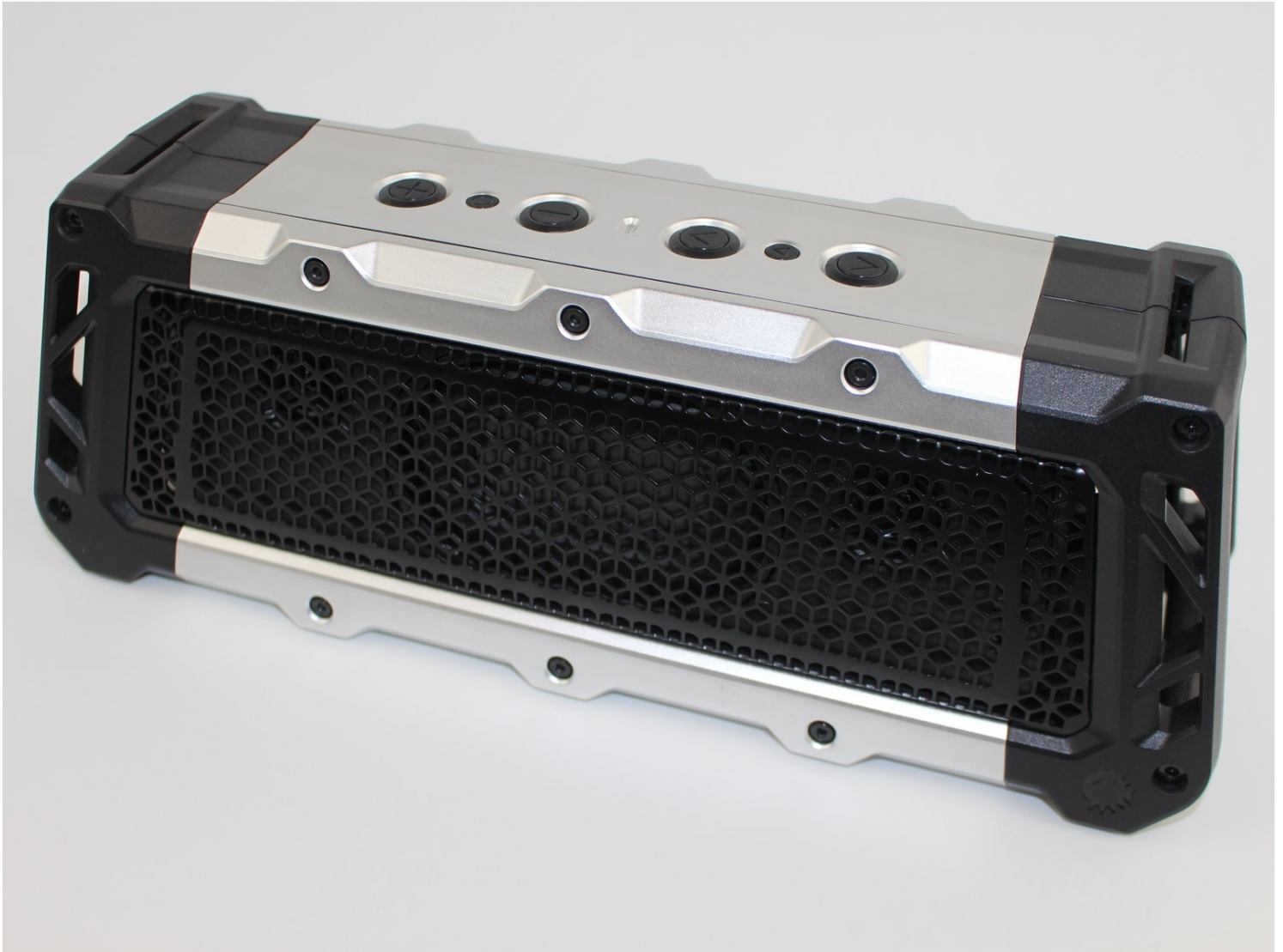




Fugoo Tough XL Case Replacement

The Fugoo Tough XL speaker has an external...

Written By: Abdul



INTRODUCTION

The Fugoo Tough XL speaker has an external shell that can be removed to make necessary repairs.

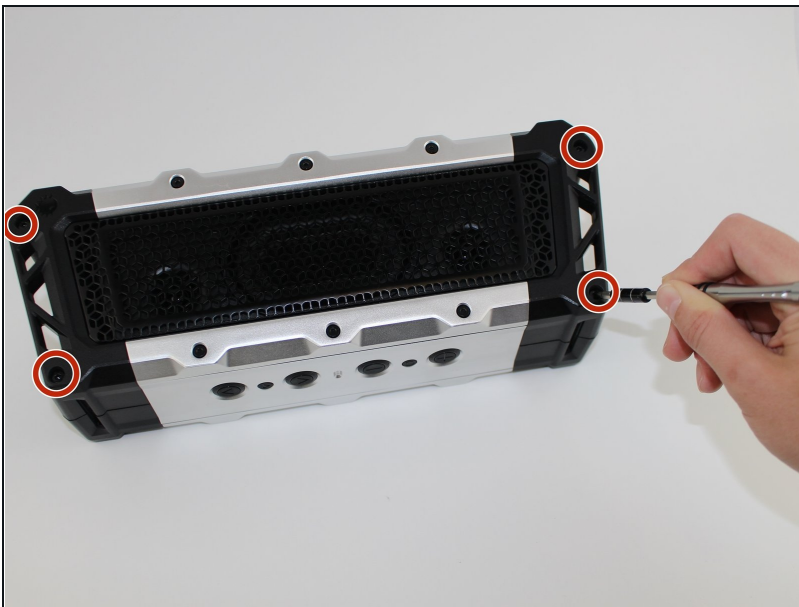
TOOLS:

[iFixit Opening Tool](#) (1)

[TR10 Torx Security Screwdriver](#) (1)

[3mm Hex Key \(or Bit\)](#) (1)

Step 1 — Case



- Remove the four 3 mm screws located in each corner using a 3 mm Hex screwdriver.

Step 2



- Gently pull up and off the outer casing.
- ① Do not feel afraid to use a bit of force if necessary.

Step 3



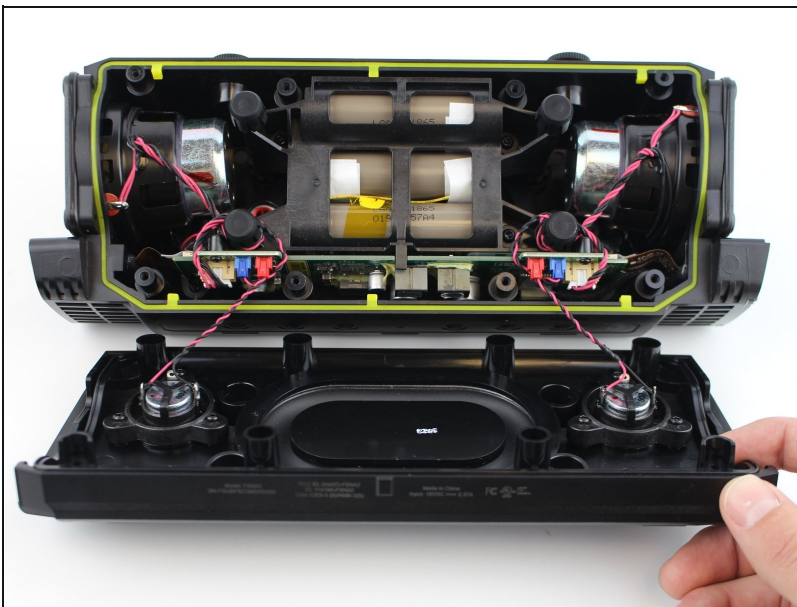
- Remove the internal device from the outer casing.
- Remove the four 12 mm screws on each corner using a T10 Torx screwdriver.
- Remove the eight 6 mm screws on the top and bottom using a T10 Torx screwdriver.

Step 4



- Use your hands to gently remove the side plates.
- Use an opening tool to pry off the back plate with the Fugoo trademark.

Step 5



- Slowly pull the front casing from the back casing. Avoid putting any tension on the connected cables.

⚠ Separate the two slowly and consistently to avoid damaging the speaker cables.

To reassemble your device, follow these instructions in reverse order.