



Wahl Hair Clippers Model ST115VAC Power Cord Replacement

Demonstrate how to replace the power cord on prominent hair clippers.

Written By: Julio Alvarado



INTRODUCTION

Cord problems are bound to eventually happen due to normal use, winding up the cord, and cramming it into a drawer. The cord replacement process is straight forward, but the most important part to remember is do not work on device while it is plugged in. It is also advisable to take advantage of the open device by cleaning out any visible debris.



TOOLS:

- [JIS Driver Set](#) (1)
 - [64 Bit Driver Kit](#) (1)
 - [Spudger](#) (1)
-

Step 1 — Power Cord



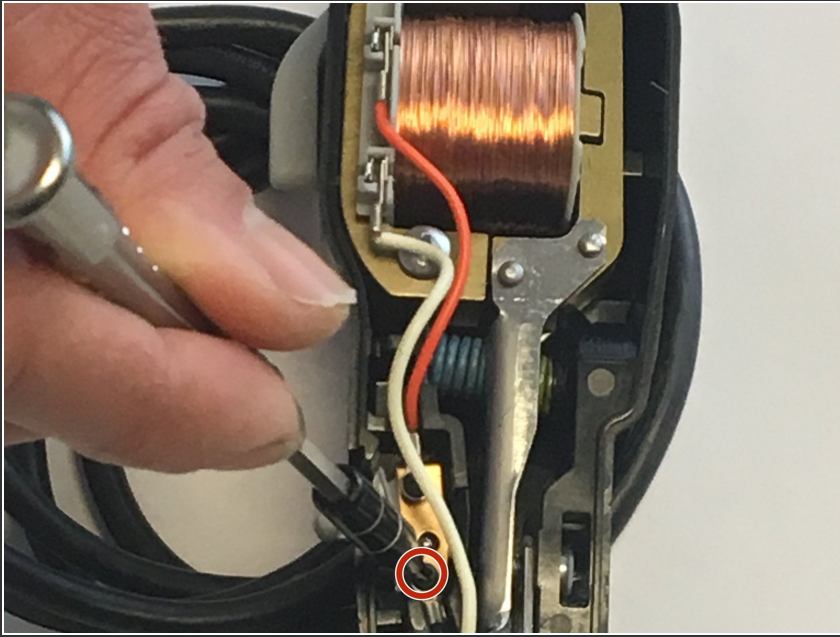
- Unscrew the three 12mm black JIS screw found on the red side of the the device with a JIS #1 driver.

Step 2



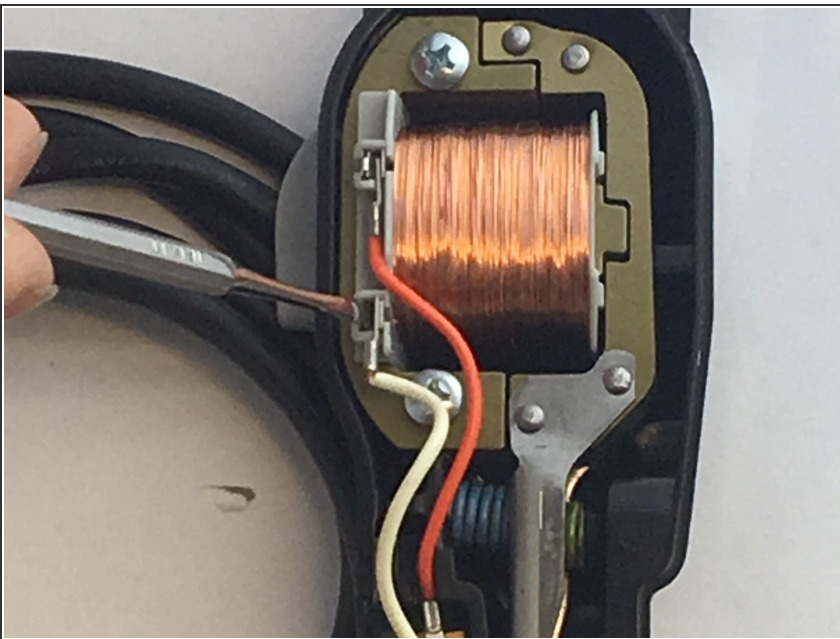
- Grab the red cover by the side and lift off the top piece.

Step 3




- Unscrew the 5.556mm screw with a JIS #0 screwdriver. (Black Screw located at power switch)

Step 4

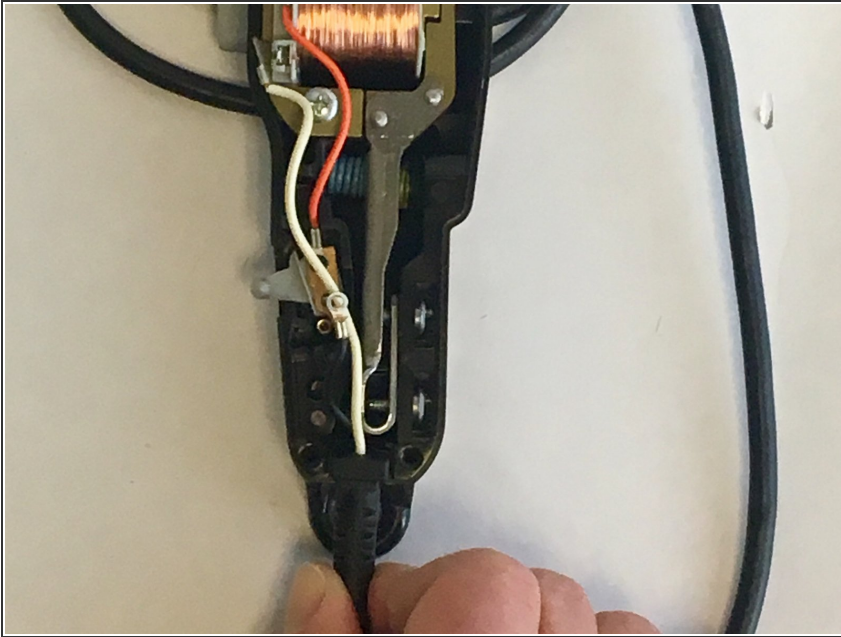


- Insert the metal spudger between the wire connector and the device connector. The spudger should disengage a tension-like lock between both connectors, and once disengaged gently pry out the cord connection.

 (Note-dependent on varying user conditions, the connection may be harder to remove and may involve more force or a gentle rocking to separate connection.)

⚠ When working with electronics, make to use an ESD safe tool, to avoid shock. Try using the [black nylon spudger](#) instead.

Step 5



- Remove the cord from the fixed position.

To reassemble your device, follow these instructions in reverse order. When installing new cord, make sure black wire is underneath the white wire.