



Network card Replacement

In this guide I'll show you how to replace the network card.

Written By: Robin Koch



INTRODUCTION

Want to have a newer/faster network card? Follow this guide, it will show you how to replace it.



TOOLS:

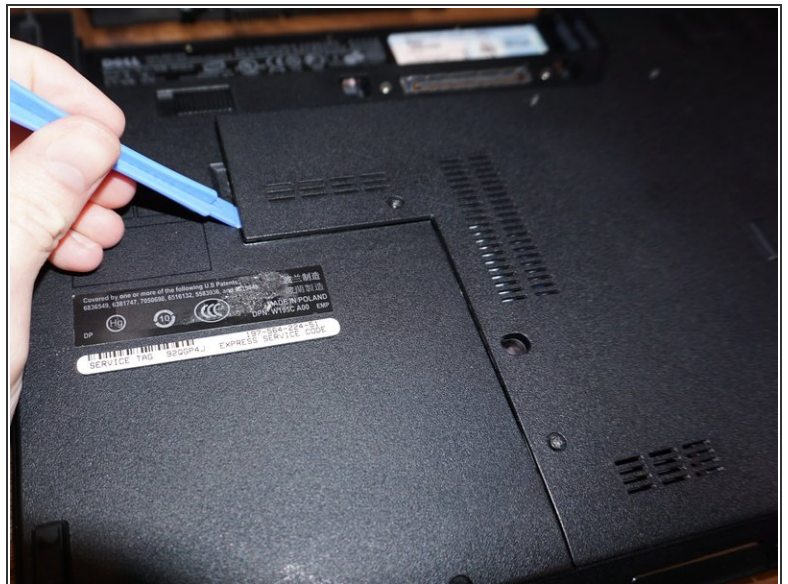
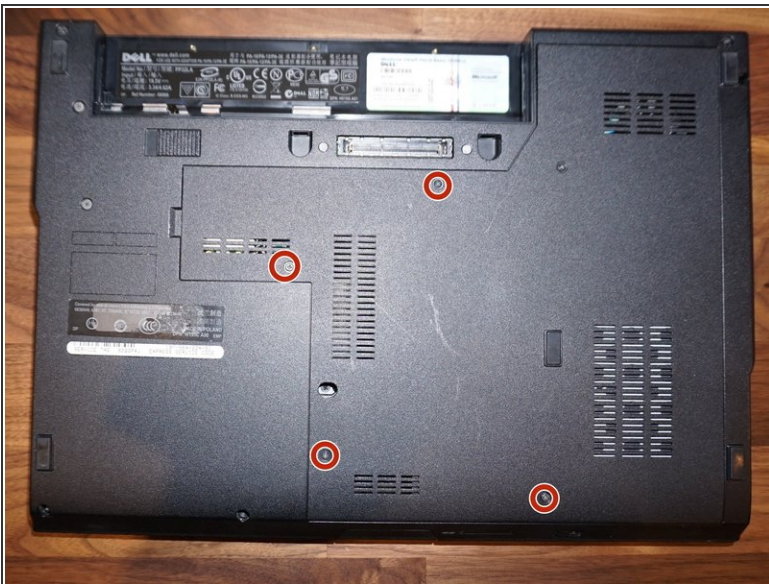
- [iFixit Opening Tools](#) (1)
 - [Spudger](#) (1)
 - [Mako Driver Kit - 64 Precision Bits](#) (1)
-

Step 1 — Remove battery



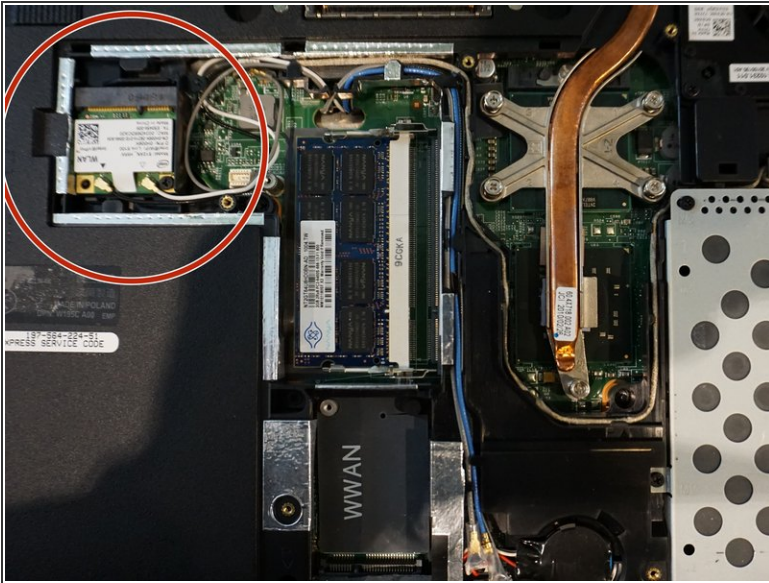
⚠ Be sure to remove the battery to prevent any electrical shortage.

Step 2 — Remove the backpanel



- Loosen all four screws and remove the back panel.
- Remove the back panel with a spudger. Start out as in the second photo to prevent the plastic from breaking. Work your way around the panel to remove it.

Step 3 — Remove the antenna wires



- In the red circle is the network card
- Remove the two wires (inside the green circle)
- ⚠ the wires are very fragile and need to be removed with care

Step 4 — Remove the network card



- Place the spudger as shown in the photo. The network card will pop up. After that you can remove it and replace it with another one
- ⚠ The wires are very fragile, be aware!

To reassemble your device, follow these instructions in reverse order. Be sure to connect the wires the same as in step 3.