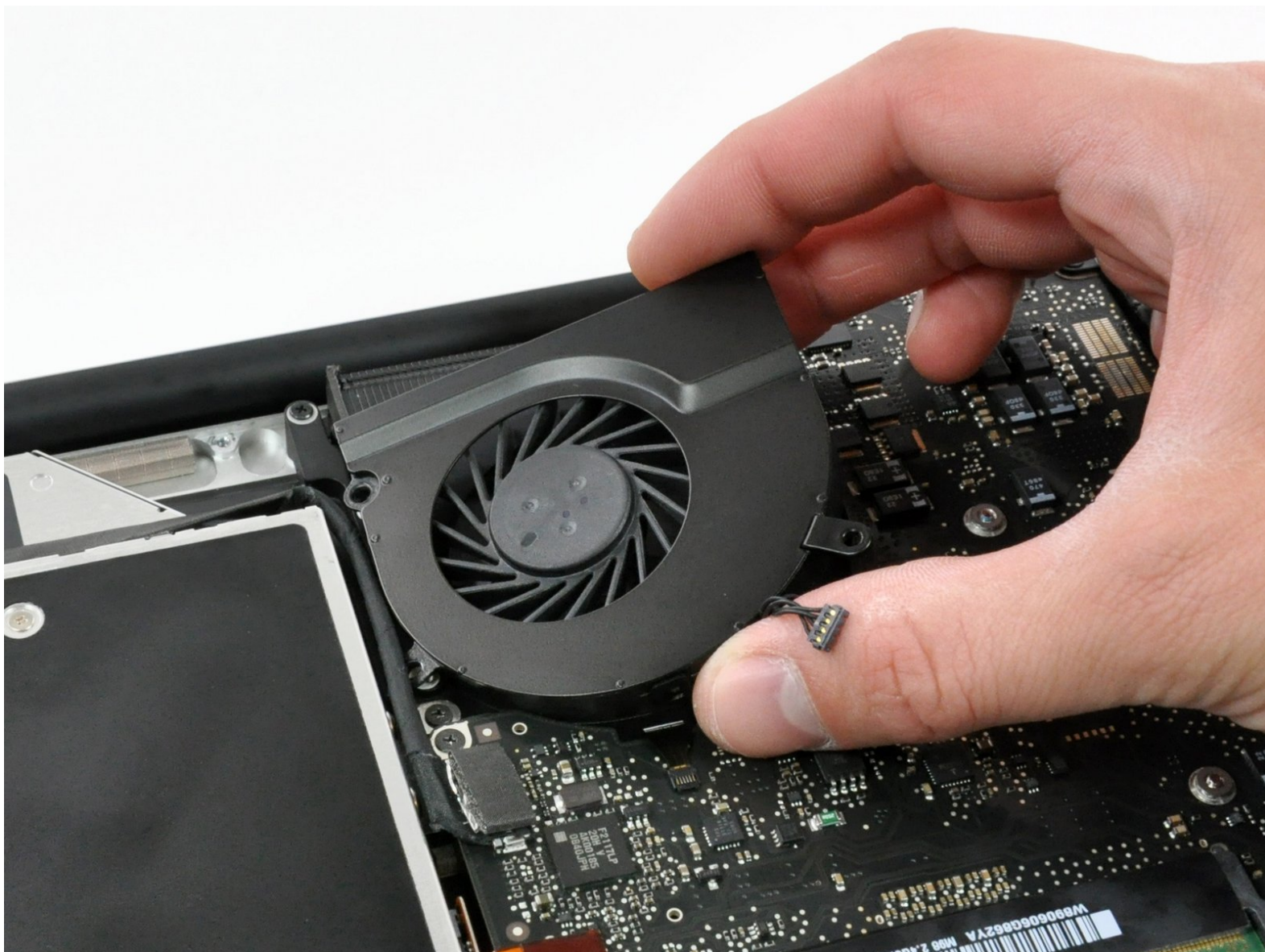




MacBook Pro 15" Unibody Late 2008 and Early 2009 Right Fan Replacement

Replace the right speaker in your MacBook Pro 15" Unibody Late 2008 and Early 2009.

Written By: Walter Galan



INTRODUCTION

Replacing a defective fan is pretty easy and will keep your laptop running cool. This guide is for the fan on the right side of the Macbook when in normal operation. It will be the left-hand fan when you are removing it.



TOOLS:

- [Phillips #00 Screwdriver](#) (1)
- [Spudger](#) (1)



PARTS:

- [MacBook Pro 15" Late 2008 through Mid 2012 \(excluding Mid 2009 2.53 GHz\) Right Fan](#) (1)

Step 1 — Access Door



- With the case closed, place the Unibody top-side down on a flat surface.
- Depress the grooved side of the access door release latch enough to grab the free end. Lift the release latch until it is vertical.

Step 2



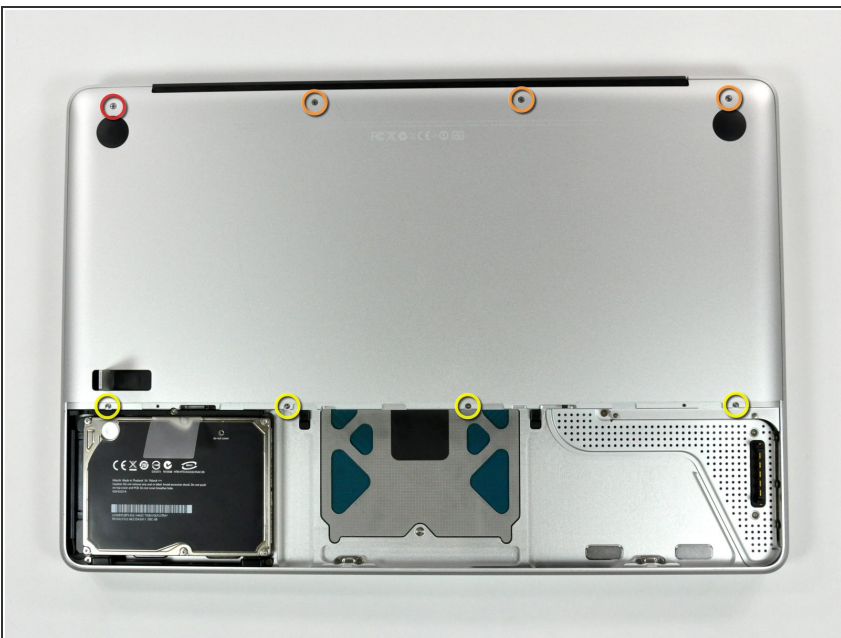
- The access door should now be raised enough to lift it up and out of the Unibody.

Step 3 — Battery



- **i** Be sure the access door release latch is vertical before proceeding.
- Grab the translucent plastic tab and pull the battery up and out of the Unibody.
- If the latch is depressed it will lock the battery in place.

Step 4 — Lower Case



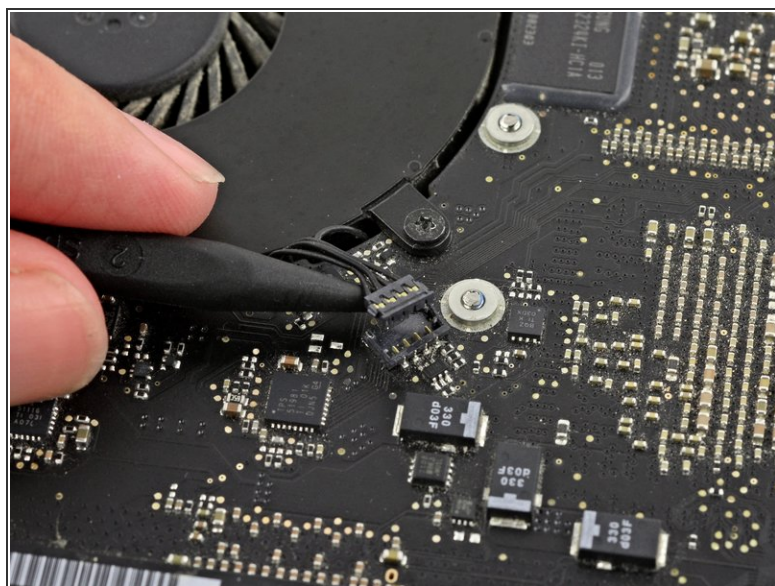
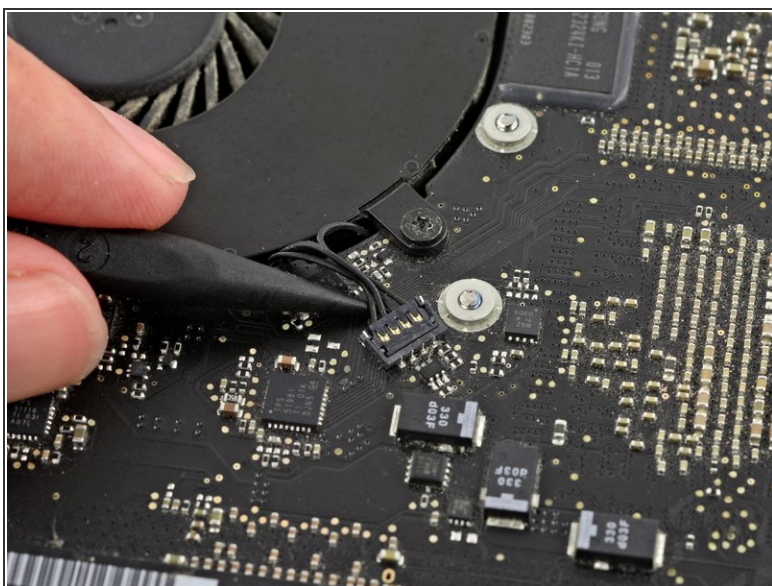
- Remove the following eight screws securing the lower case to the chassis:
 - One 5.4 mm Phillips screw.
 - Three 14 mm Phillips screws.
 - Four 3.5 mm Phillips screws.

Step 5



- Using both hands, lift and remove the lower case off the upper case.

Step 6 — Right Fan

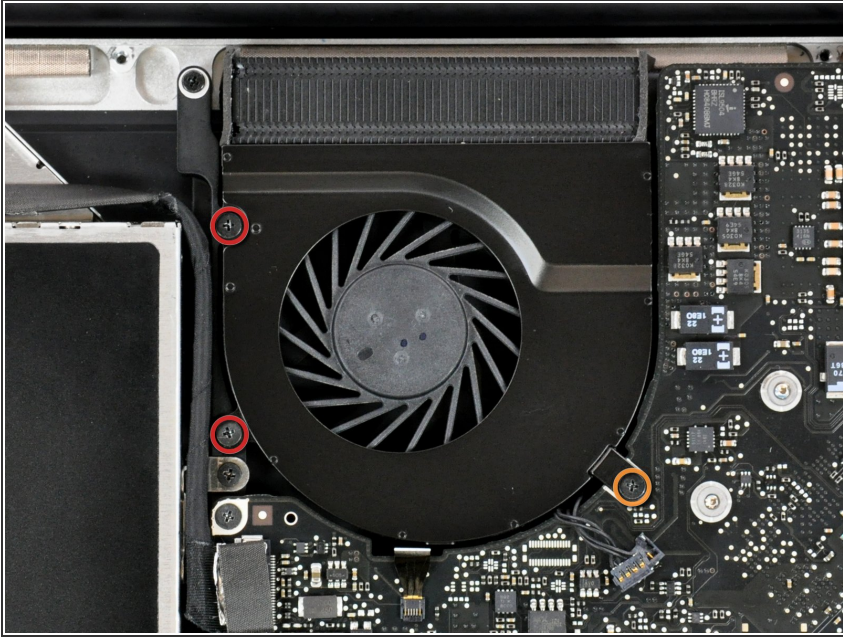


- Use a spudger to pry the fan connector straight up and out of its socket on the logic board.

⚠ Be sure to only pry up on the connector itself **not on the socket** or you may damage the machine.

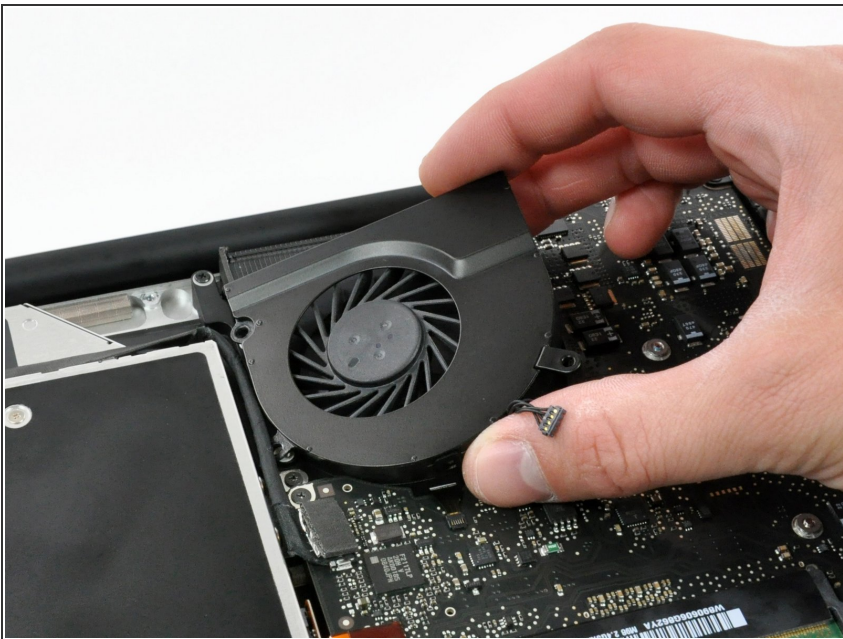
ℹ It is useful to twist the spudger axially from beneath the fan cable wires to release the connector.

Step 7



- Remove the following three screws securing the right fan to the upper case and logic board:
 - Two 3.2 mm Phillips screws.
 - One 3.5 mm Phillips screw.

Step 8



- Lift the fan out of the upper case.

To reassemble your device, follow these instructions in reverse order.