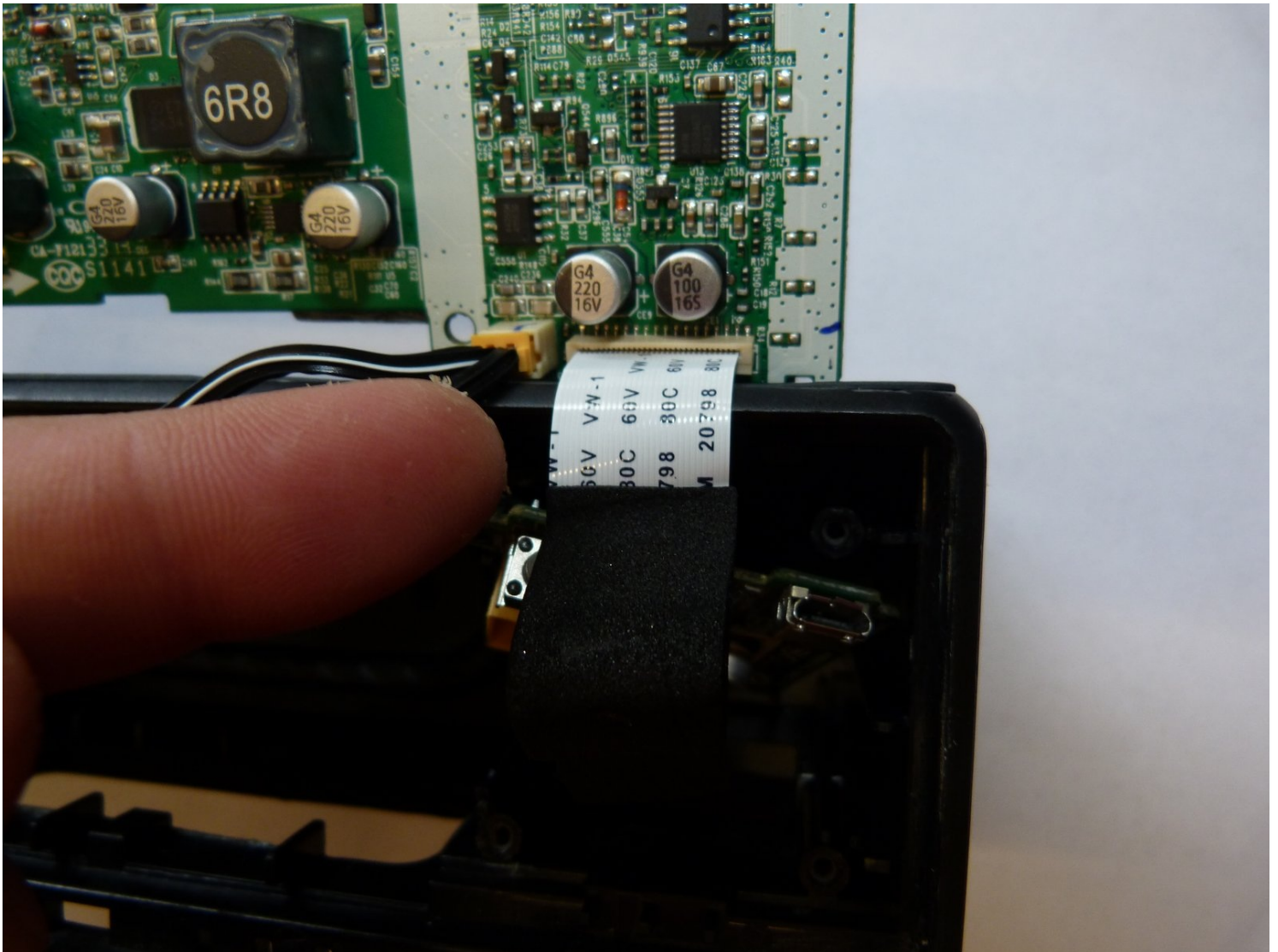




Sony SRS-X3 Motherboard Replacement

This guide refers to the motherboard...

Written By: Zachary Church



INTRODUCTION

This guide refers to the motherboard replacement of the Sony SRS-X3 Bluetooth Speaker. The motherboard controls all the various components of a device.

The symptoms of a device's motherboard not working could be a lack of power, no sound, and random crashing. Before disassembling the speaker, be sure it is turned off completely by pressing the power button. This ensures that no short circuits cause more problems or potentially harm you.

TOOLS:

[Metal Spudger](#) (1)

[Phillips #1 Screwdriver](#) (1)

PARTS:

[Sony SRS-X3 Motherboard](#) (1)

Hardware, Motherboard

Step 1 — Speakers



- Remove the rubber feet on the bottom of the device.

Step 2



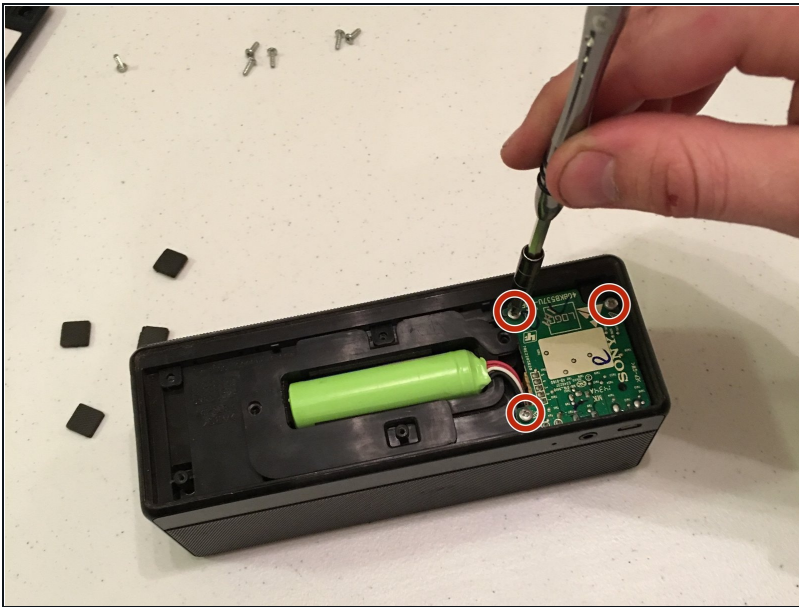
- Remove the 6 silver screws with a Phillips #1 screwdriver.
- Remove the bottom plastic cover of speaker.

Step 3



- Remove the two screws holding the battery pack with the Phillips #1 screwdriver.
- Remove the battery back with a spudger.

Step 4



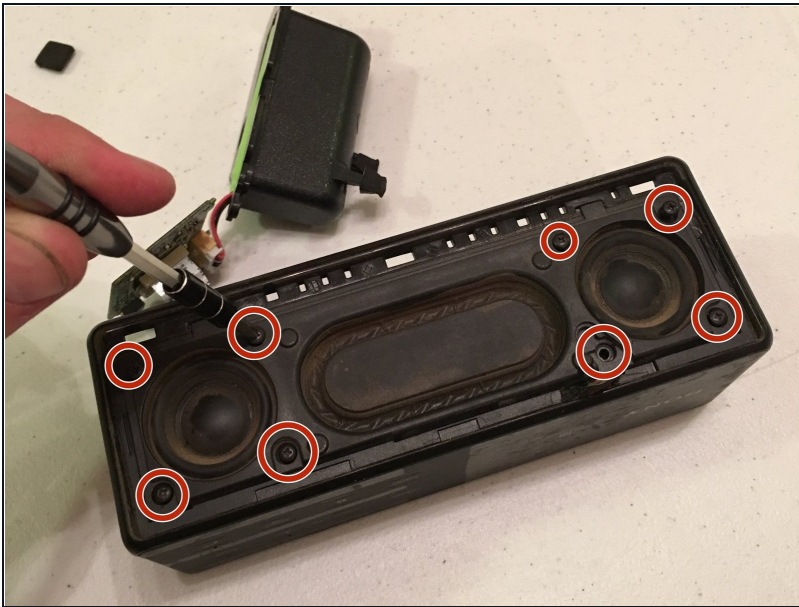
- Remove the three screws using a Phillips #1 screwdriver.
- Remove the green circuit board and the battery pack.
- ⓘ The battery pack and green circuit board will still be connected to the speaker by a ribbon wire.

Step 5



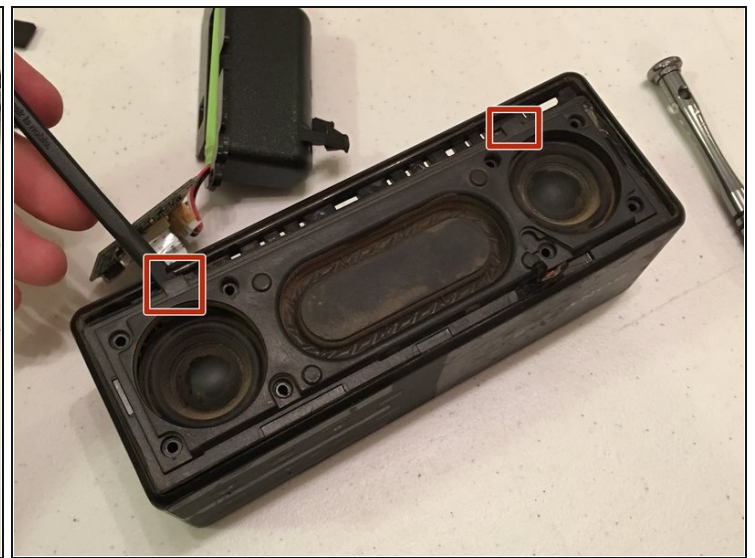
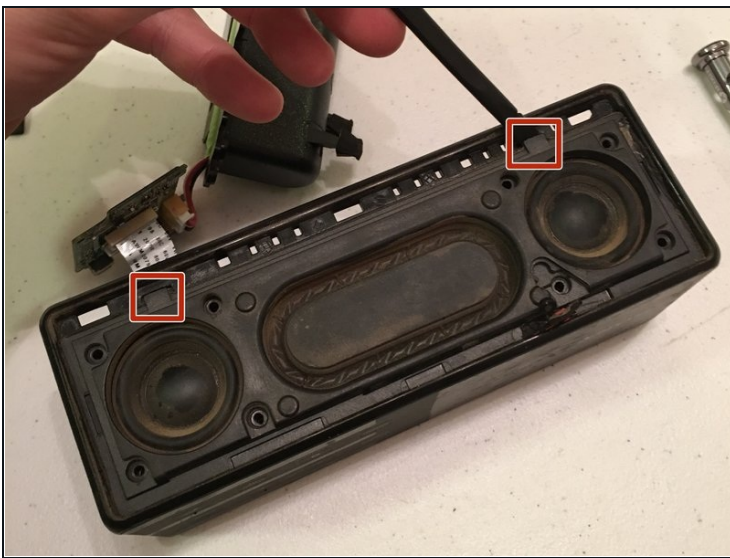
- Pop off the front speaker face (dark grey with little holes) by pushing out 3 tabs where screws were previously located and sticking the spudger in the crack where grey speaker face meets the outer shell.
- You may really have to pry on this part; it is not easy to remove and will pop out when released.

Step 6



- Remove the eight black screws with a Phillips #1 screwdriver.

Step 7



- Remove the front face by prying the two black tabs using a spudger.

ⓘ This face is glued in and may need some elbow grease to remove. Don't worry about breaking anything, as it is all connected.

Step 8



- Remove the speaker wires from each speaker (2 wires per speaker) and take the speakers out of the device.
- ⓘ The speaker wire connectors are made to connect very snug, so they should be hard to remove. Give it a good tug and they should pop off the male end.
- Remove the speakers from the device.

Step 9 — Motherboard



- Remove the ribbon wire simply by pulling it out of the fixture in which it connects. Once removed, sit the small green board to the side and prepare to remove the Motherboard.

Step 10



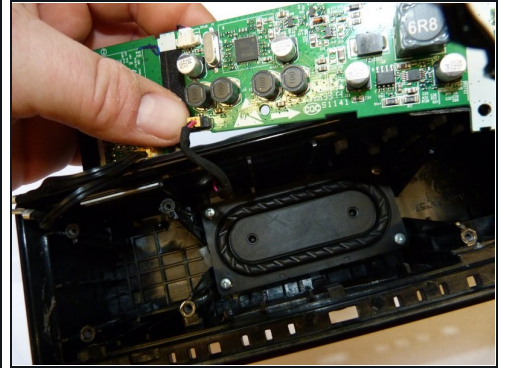
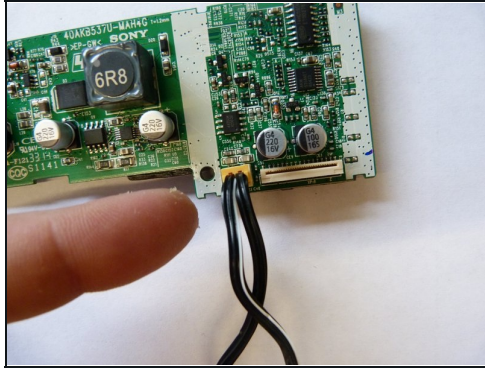
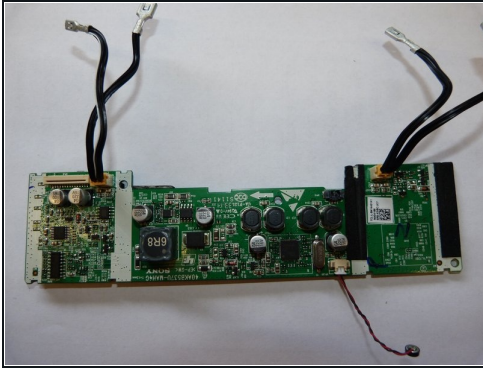
- Locate the Motherboard through the hole in which the battery pack normally rests.

Step 11



- Use your fingers to pull the board upwards while the speakers top is facing downwards. In doing so, use more force than you are comfortable with. (Do NOT worry. The board slides upwards, regardless of the friction that may seem like it is keeping it from sliding out.)

Step 12



- Once the Motherboard has been removed, you are free to remove all of the wires that are connected to it. Gently pull on the clips where the wires insert into the board to remove all of the wires.

To reassemble your device, follow these instructions in reverse order.