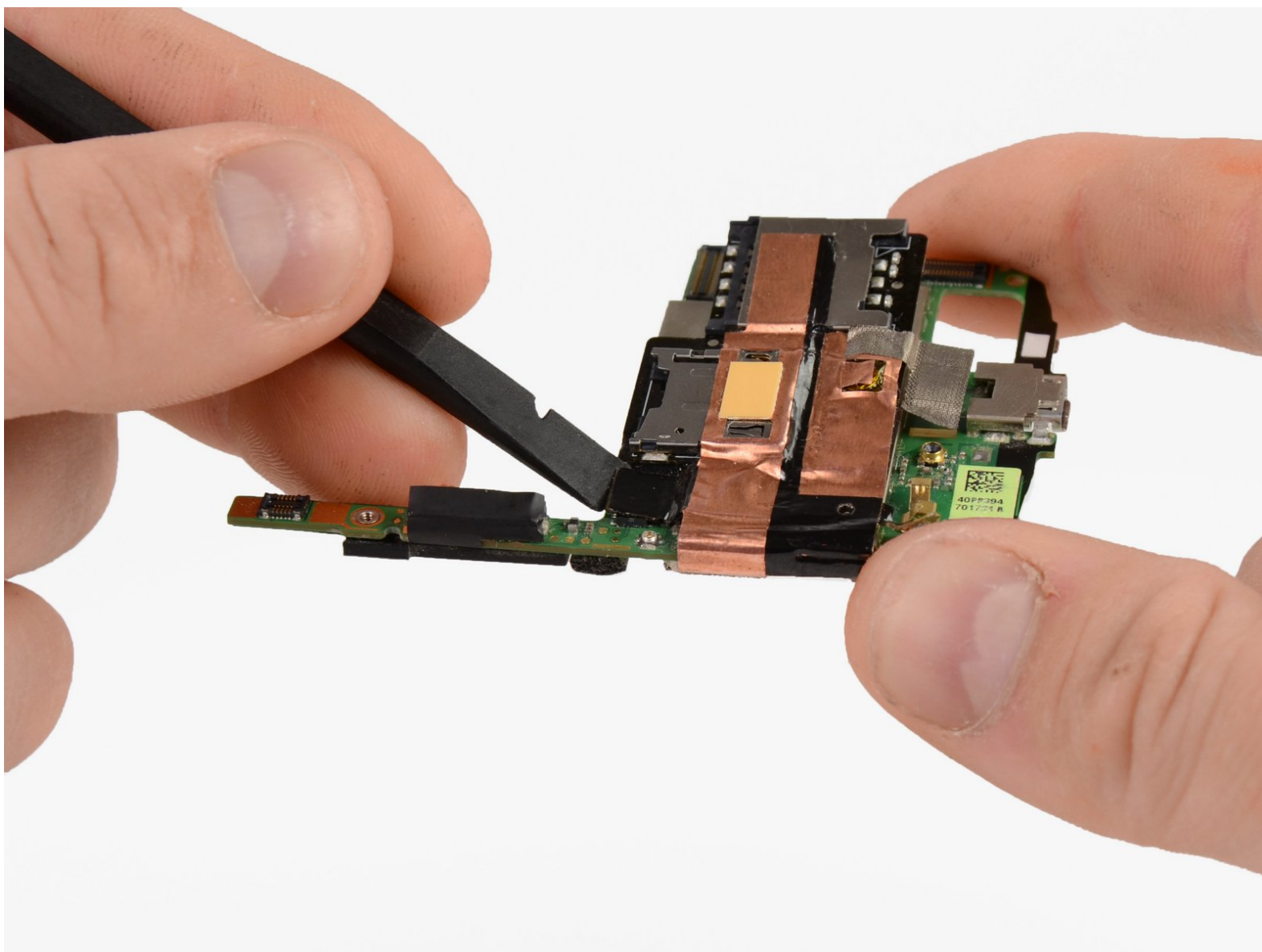




# Nexus One SIM Card Tray Replacement

This guide is for replacing the SIM card tray/MicroSD card tray module.

Written By: Niklas Johnson





## TOOLS:

- [iFixit Opening Tool](#) (1)
- [Phillips #00 Screwdriver](#) (1)
- [T5 Torx Screwdriver](#) (1)
- [Spudger](#) (1)

## Step 1 — Rear Cover



- Using two fingers, push up on the rear cover.

## Step 2



- The rear cover slides up and off.

## Step 3 — Battery



- Using the plastic opening tools, pry the left bottom corner of the battery up.

## Step 4



- Pull the battery up and out.



## Step 5 — Battery Housing



- Remove the two Torx T5 screws.
- Remove the one Philips #00 screw.

## Step 6



- Using the plastic opening tool, pry up the battery housing upwards.
- Push pry tool down, undoing the plastic tab.

## Step 7



- Pry the upper left tab open on the battery housing.

## Step 8



- Pry the top tab of the battery housing.

## Step 9



- Pry the right side tab of the battery housing.

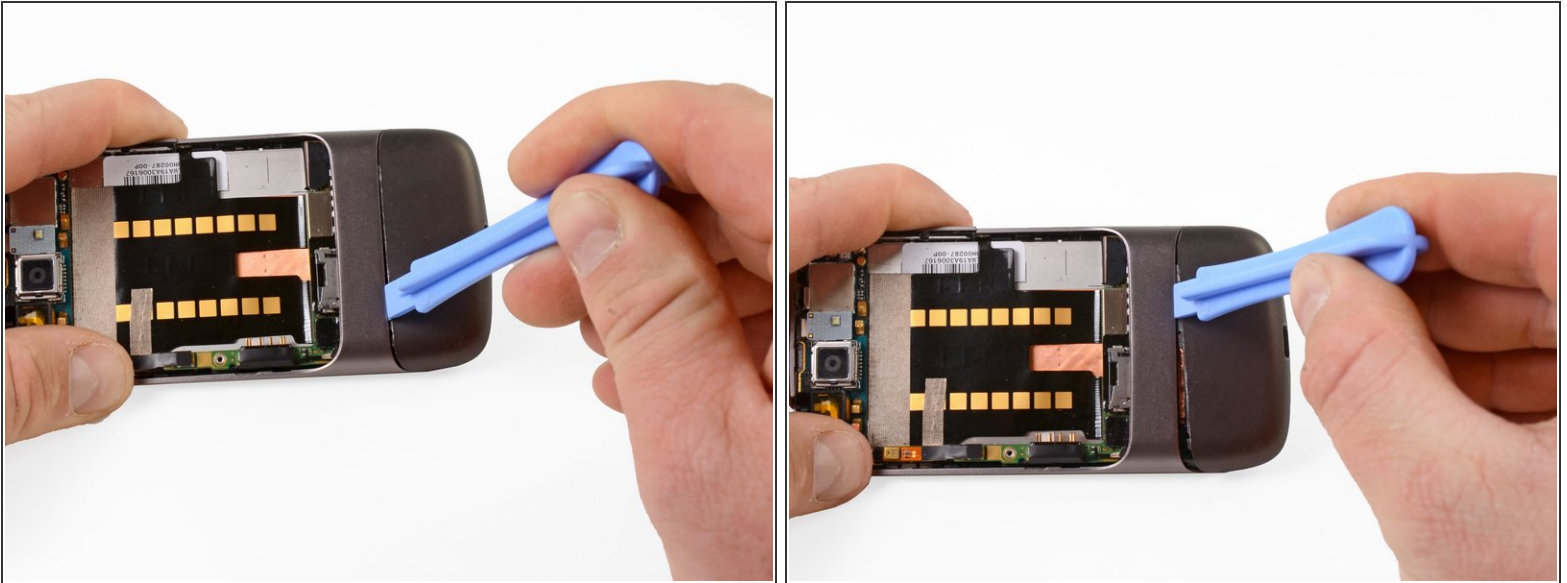
## Step 10



- Pull up on the battery housing.
- Slide the battery housing out to remove it.



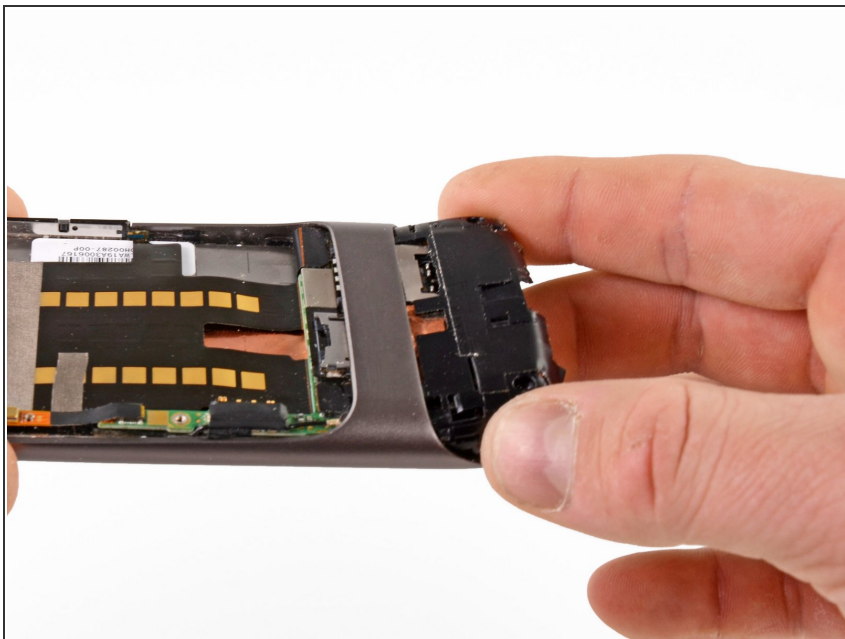
## Step 11 — Lower Cover



- Using the plastic opening tool, push the blade into the space between the case and lower cover.
- Turn the opening tool slightly, the lower cover will detach on that side.
- Repeat on other side of the seam.
- The lower cover will slide off.

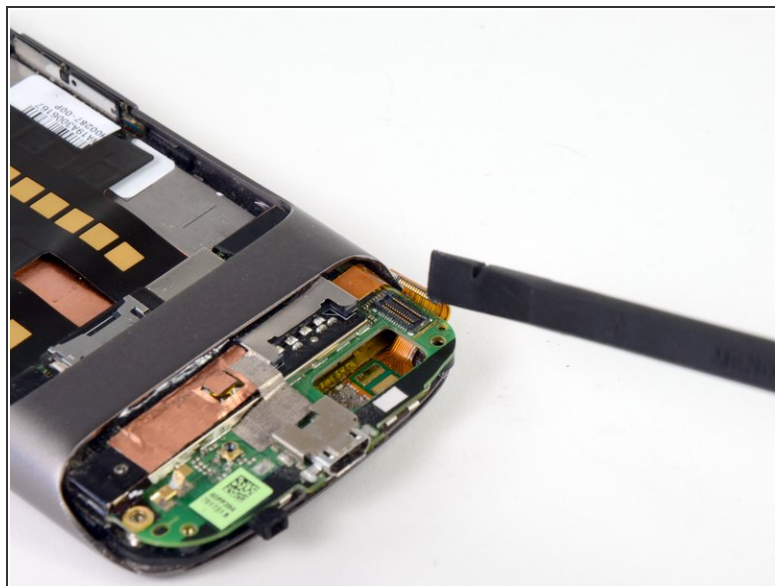
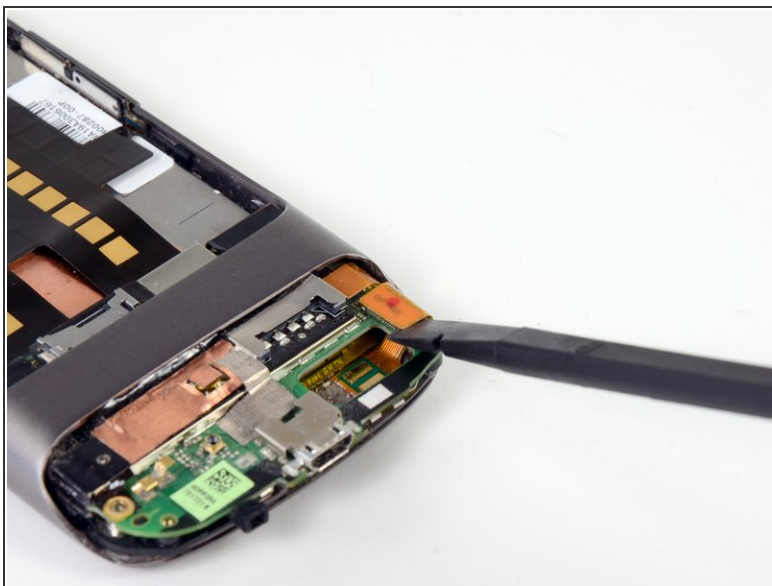


## Step 12 — Antenna Housing



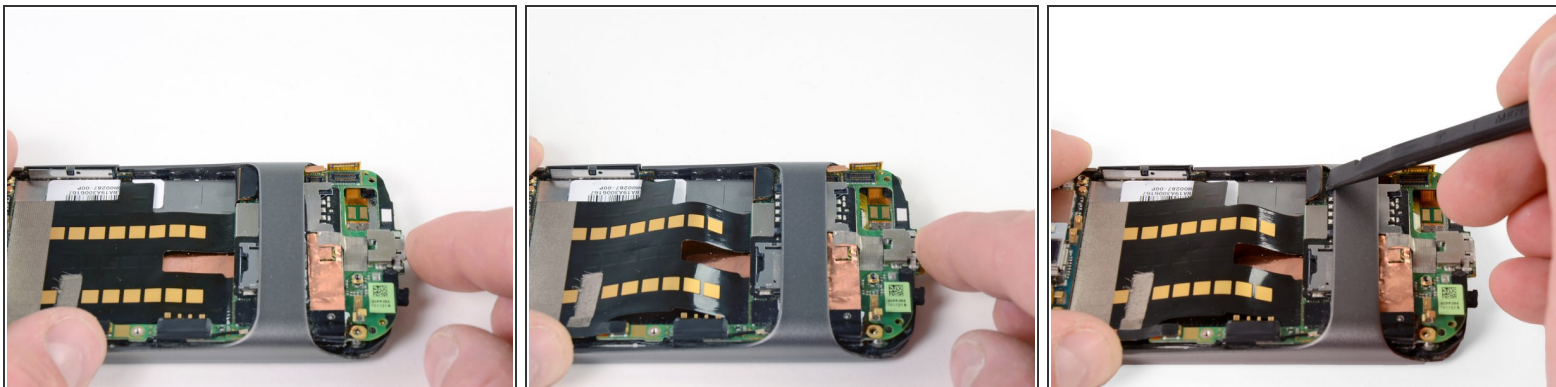
- Remove the one T5 Torx screw
- Remove the one #00 Philips screw
- Lift up the end of the antenna housing and slide it outwards.

## Step 13 — Motherboards



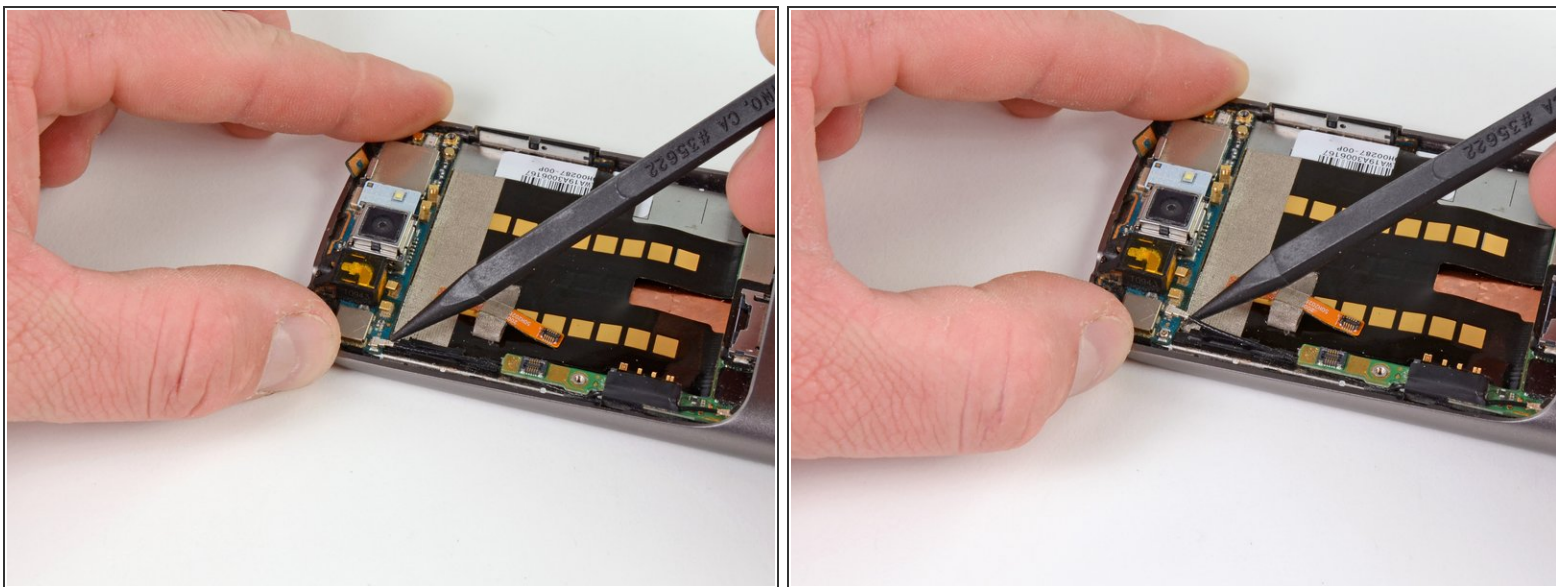
- Insert the spudger under the connector.
- Push the spudger up and twist to release the connector.
- Repeat for the next connector.

## Step 14



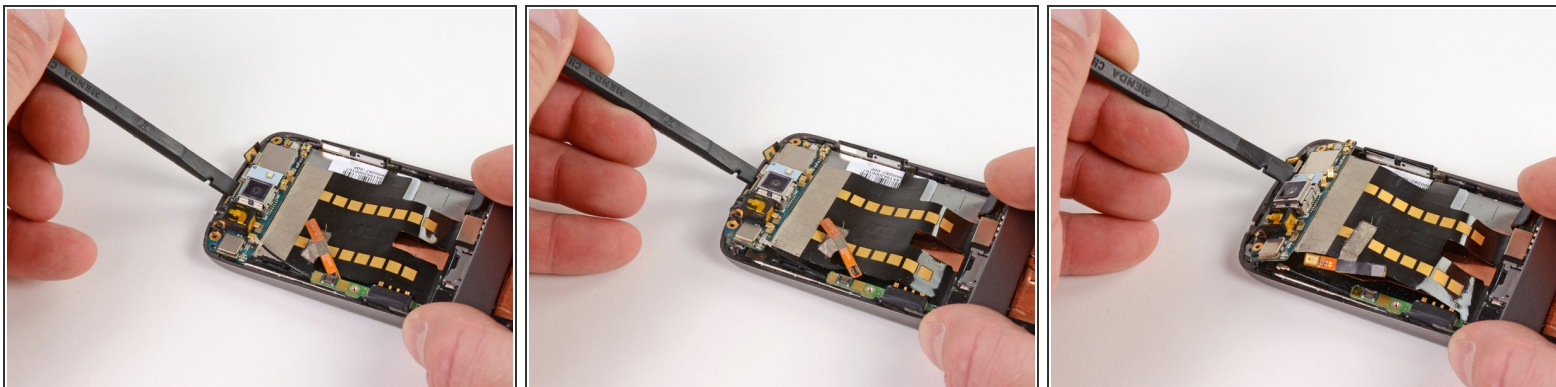
- Push on the USB port to expose the black connector.
- Use the spudger to pry the connector upwards.

## Step 15



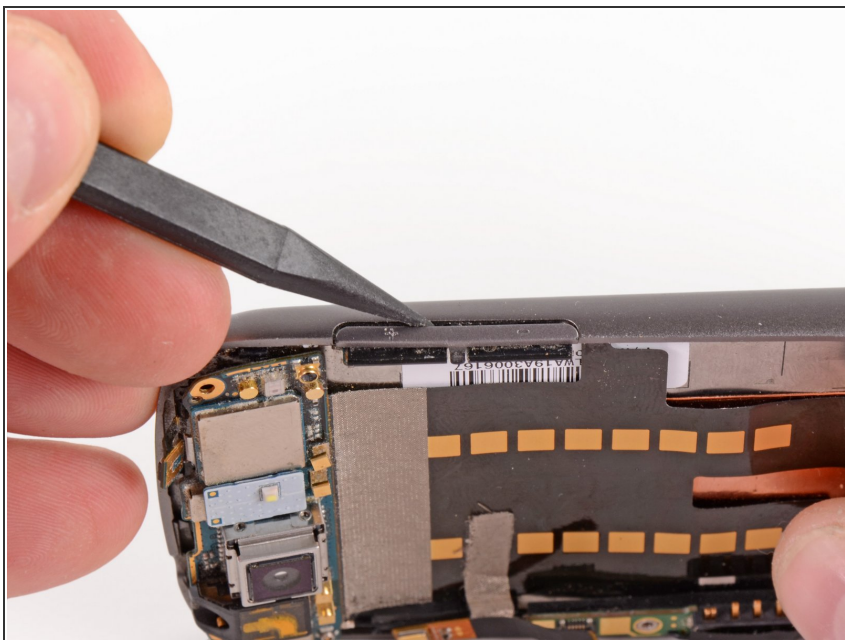
- Place the spudger under the antenna connector.
- Pry connector up vertically.

## Step 16



- Insert the spudger into tab above the camera.
- Slide upwards until the board detaches from the case.

## Step 17

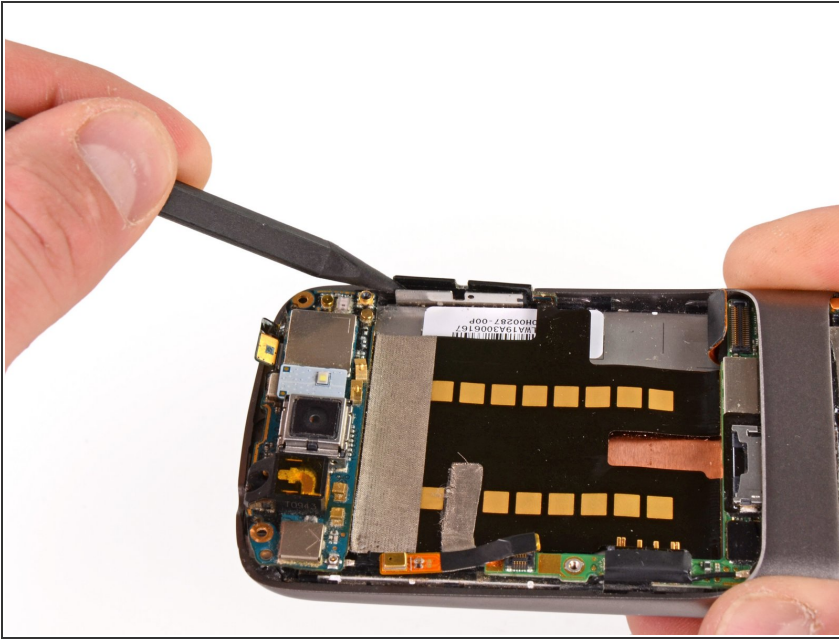


- Press the pointed tip of the spudger into the space below the button assembly.
- Wiggle the spudger tip towards the outside of the button.

**⚠ The button assembly is under some tension and may fly off.**

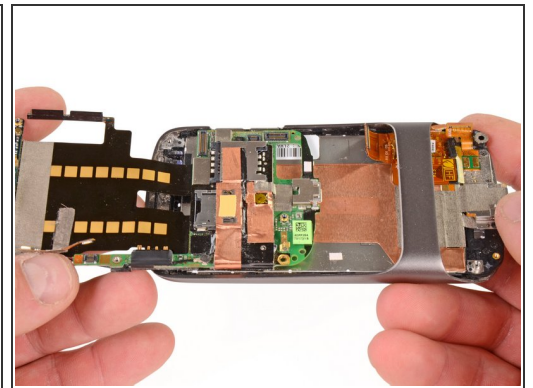
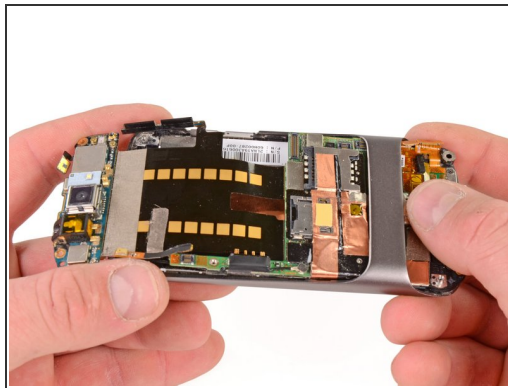
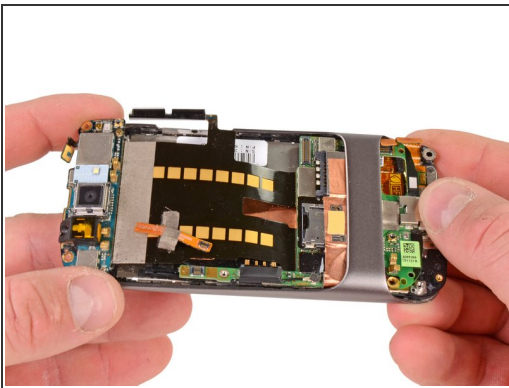


## Step 18



- Push the pointed tip of the spudger into the base of the side button board.
- Lift up, the board will disconnect from the case.

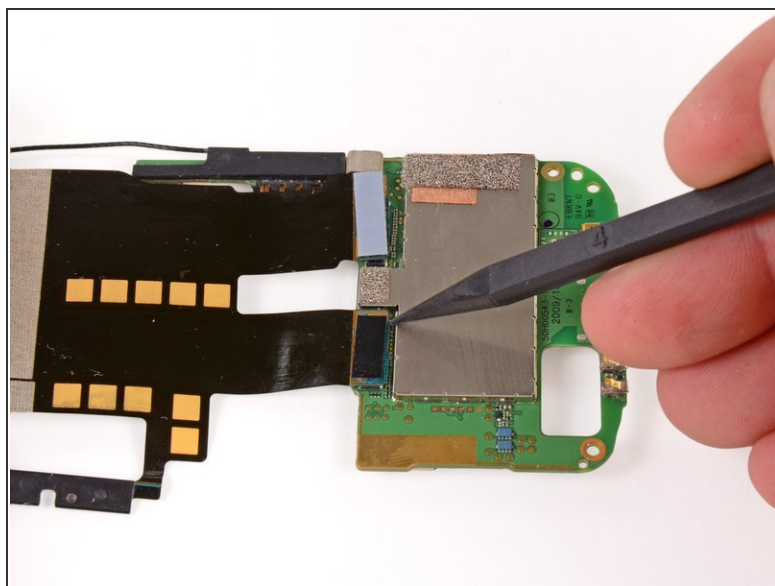
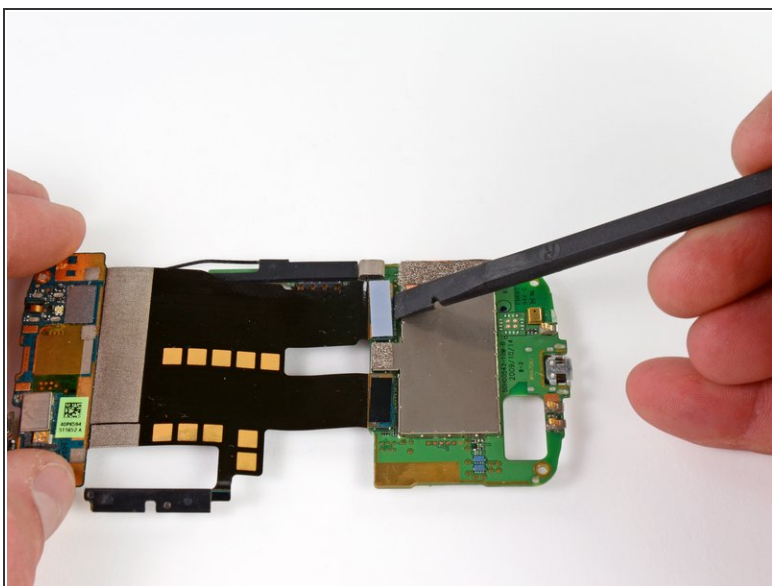
## Step 19



- Push on the lower motherboard until it slides under the case support.
- The motherboard assembly comes out as a single piece.
- Save the small black rubber rectangular sound guide under the motherboard, to replace over the microphone.

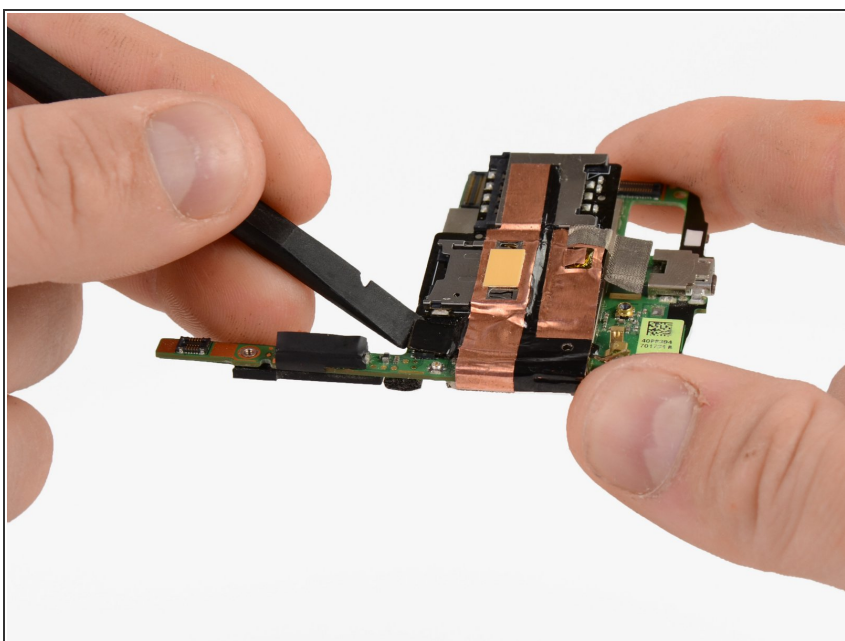


## Step 20 — Upper Motherboard



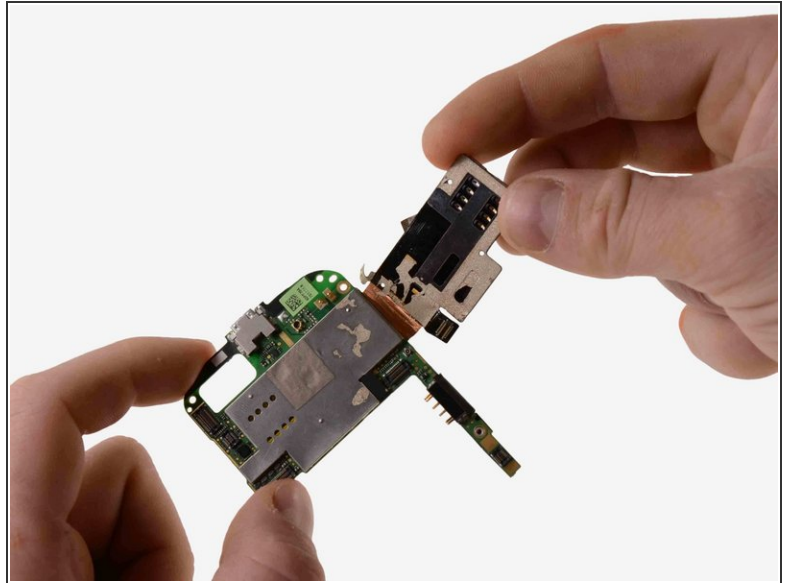
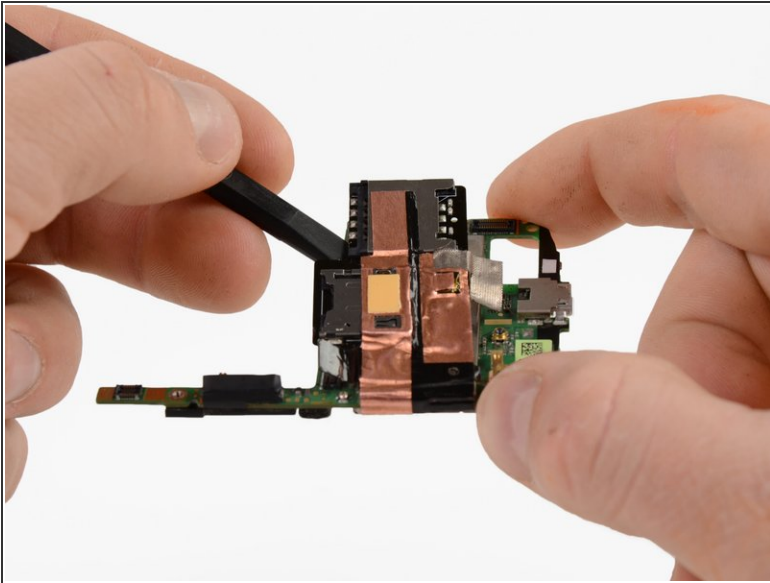
- Using the spudger, lift the blue colored connector.
- Use the spudger to lift the black connector up as well.
- Detach the upper motherboard from the lower motherboard.

## Step 21 — SIM Card Tray



- Use the spudger to lift the SIM card tray connector off the motherboard.

## Step 22



- Use the spudger to lift the SIM tray board off the motherboard.
- The SIM Tray hinges up, it is still connected by the copper tape.
- **add picture of SIM tray flipped over the side to complete guide.**

To reassemble your device, follow these instructions in reverse order.