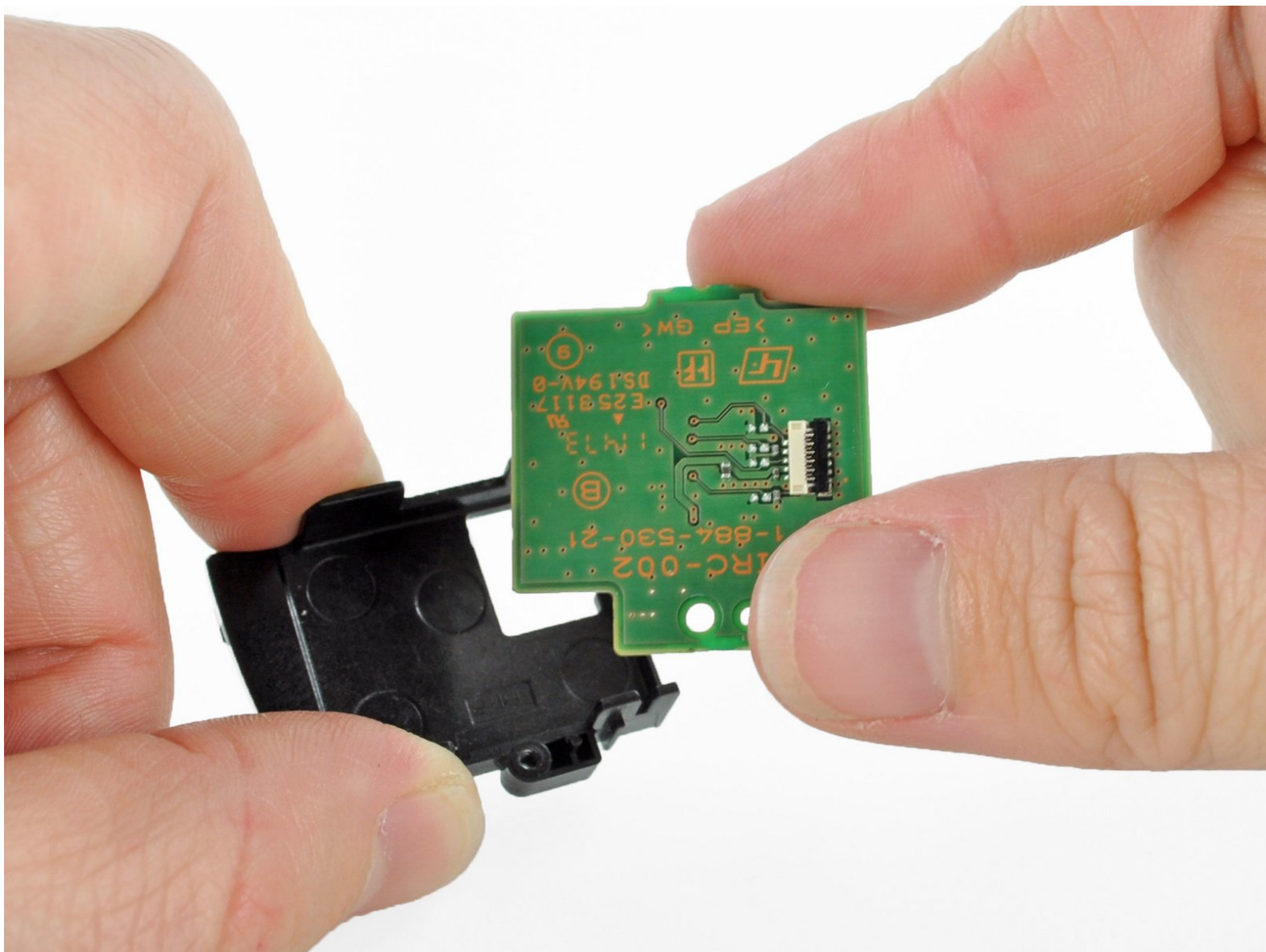




PlayStation Vita SIM Card Reader Replacement

Install the SIM card reader on the PlayStation Vita.

Written By: Brittany McCrigler



INTRODUCTION

This guide takes you through installing the SIM card reader on the PlayStation Vita.



TOOLS:

- [Phillips #00 Screwdriver](#) (1)
- [iFixit Opening Tools](#) (1)
- [Spudger](#) (1)



PARTS:

- [PlayStation Vita \(3G\) SIM Card Reader](#) (1)

Step 1 — Case Separation



⚠ Power off and remove the memory card.

- Using a Phillips #00 screwdriver, remove the four 6.4mm screws on the back casing.

Step 2



- Using your fingernail or a spudger, pry open the accessory port cover on the top of the device.
- Using a Phillips #00 screwdriver, remove the two 5.4mm screws hidden beneath the accessory port cover.

Step 3



- Remove the two 5.4mm Phillips #00 screws on the bottom of the device near the charging port.

Step 4



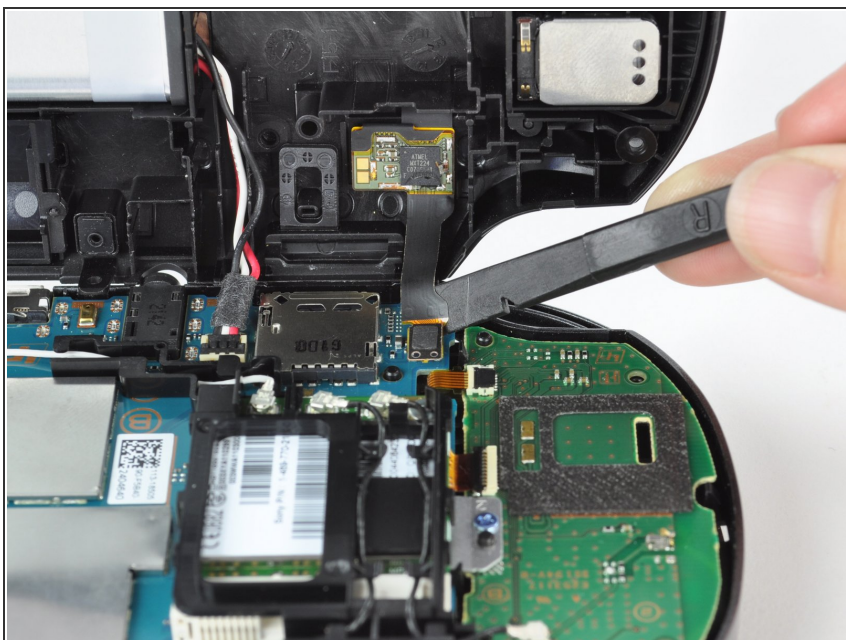
- Beginning at the sides of the device, use a plastic opening tool to separate the front and rear cases.
 - Continue working your way around the device gently prying it open.
- ⚠ There are still wires holding the front and rear cases together. You may damage the connections if you yank the cases completely apart.

Step 5



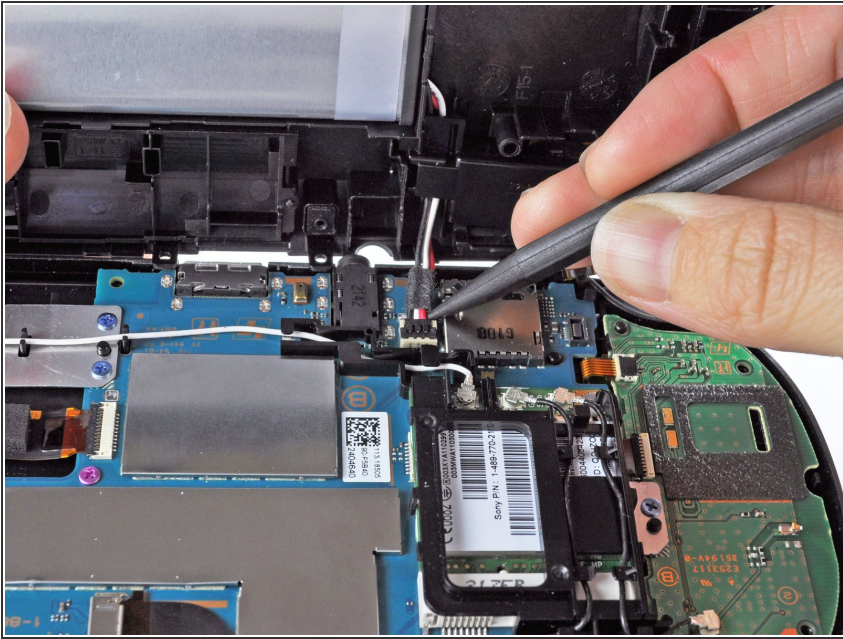
- Gently separate the two cases, minding the battery and the touch screen controller connectors holding the two cases together.

Step 6



- Using a spudger, free the touch screen controller flex cable by gently prying up the connection.

Step 7



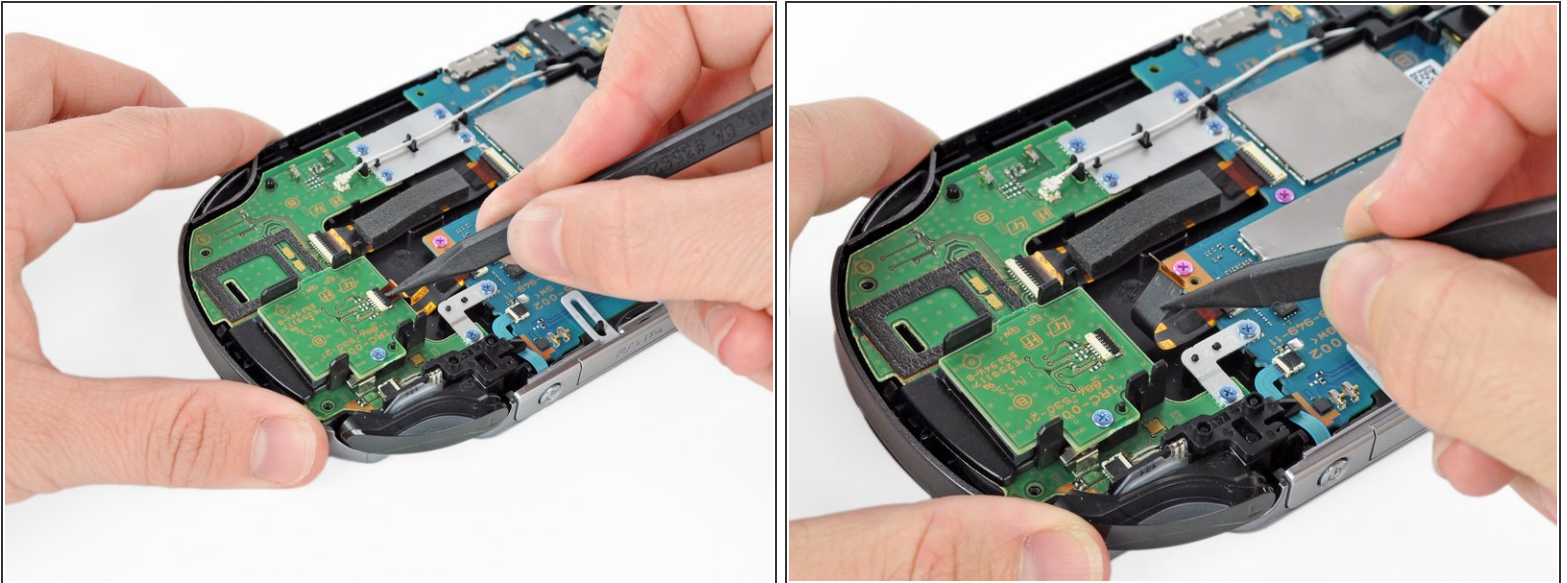
- Free the battery cable by gently prying up on the connection with a spudger.

Step 8



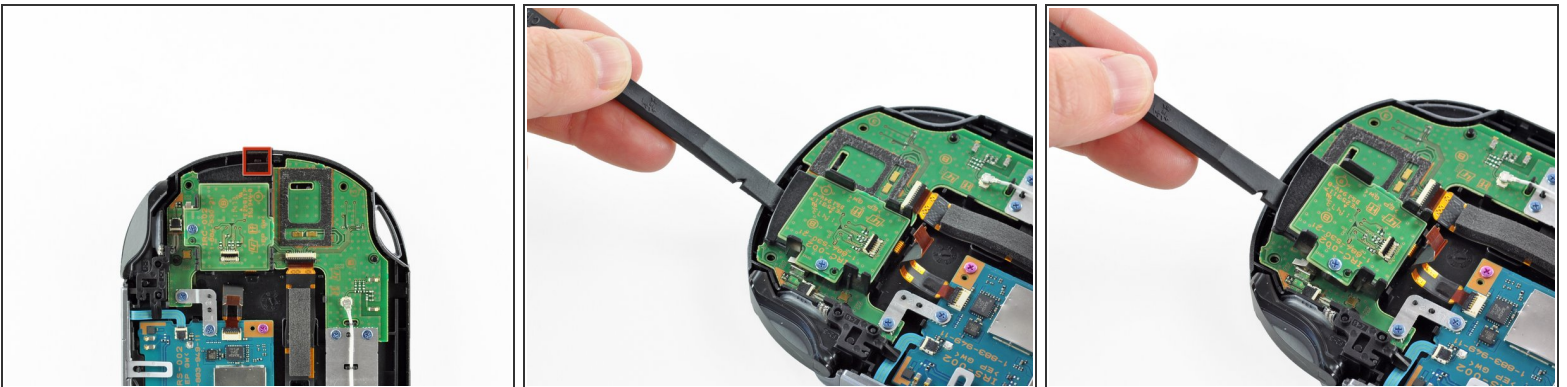
- Separate the front and rear cases.

Step 9 — SIM Card Reader



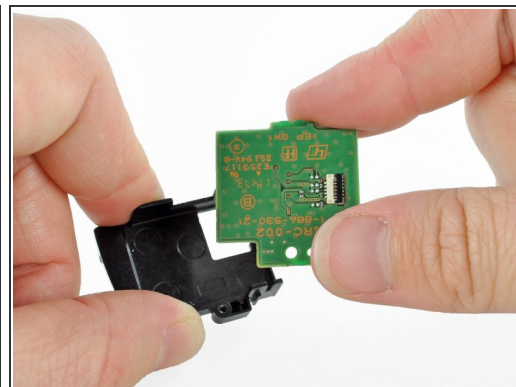
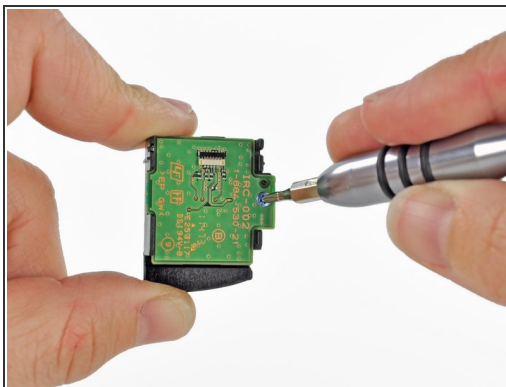
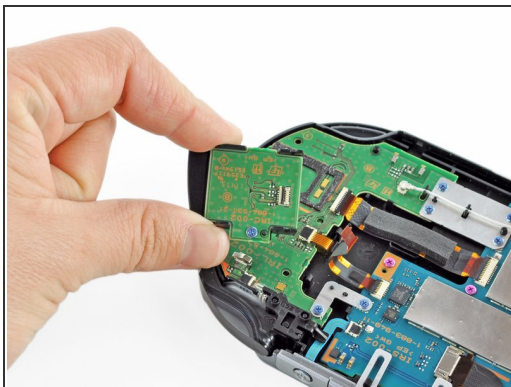
- Gently pry open the tab of the flex cable socket on top of the SIM card reader.
- Free the flex cable by sliding the spudger underneath it and pulling it out of the socket. Rest the flex cable out of the way.

Step 10



- Use a spudger to release the plastic tab along the inside of the case and gently pry up the SIM card reader.

Step 11



- Lift the SIM card reader out of the casing.
- Using a Phillips #00 screwdriver, remove the blue, 5.0mm screw from the SIM card reader.
- Separate the SIM card reader from the SIM card reader retainer.

To reassemble your device, follow these instructions in reverse order.