



Written By: Jordan Morgan



Page 1 of 6

INTRODUCTION

If your mouse wheel is broken, 'sticky' or 'jumpy', you can use this guide as a reference for disassembly and wheel replacement.

The scroll wheel serves an important functionality for any mouse. You can use it to scroll up and down on any page without using the vertical scroll bar. For the Razer Naga Epic Chroma, the scroll wheel can be pressed left or right and can be added as an additional functionality through Razer Synapse.

Before using this guide, please make sure your device is disconnected (wired) or powered down (wireless).

Electrical components in the mouse are highly conductive and can be easily damaged if precautionary measures are not taken. Before beginning, make sure to properly ground yourself prior to any attempt at disassembly.



TOOLS:

- [Phillips #00 Screwdriver](#) (1)
 - [Spudger](#) (1)
-

Step 1 — Razer Naga Epic Chroma Disassembly



- Using a spudger, remove the teflon tape on the bottom of the mouse to reveal four screws.

Step 2



- Use a Phillips #00 screwdriver to remove the four screws.

Step 3



- Gently pull on the top plastic plate of the device and carefully unplug the white cord from the circuit board.

⚠ When removing the chassis, carefully unplug the cord connecting to the top mouse buttons.

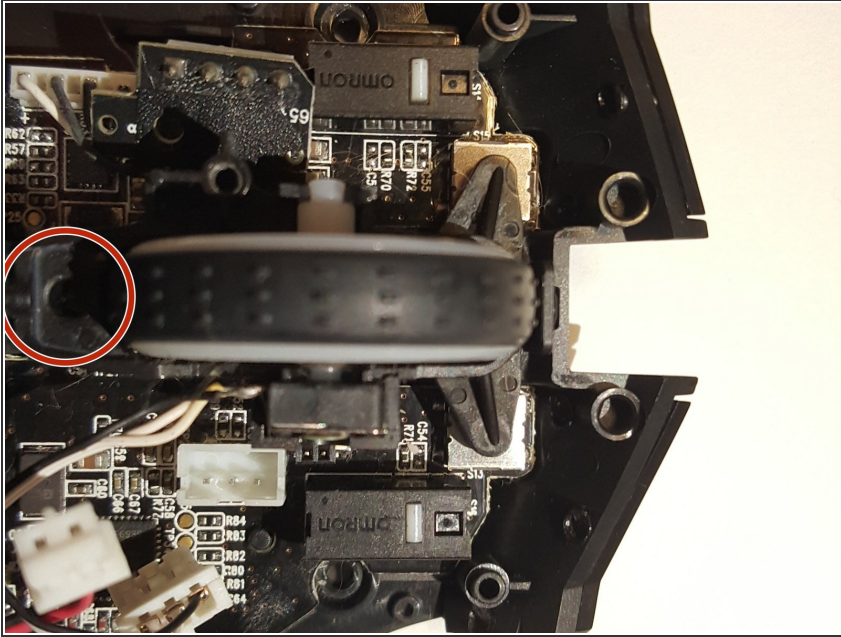
Step 4



- Gently pull up on the right plate on the mouse; separating it.
- Carefully repeat this step for the left side.

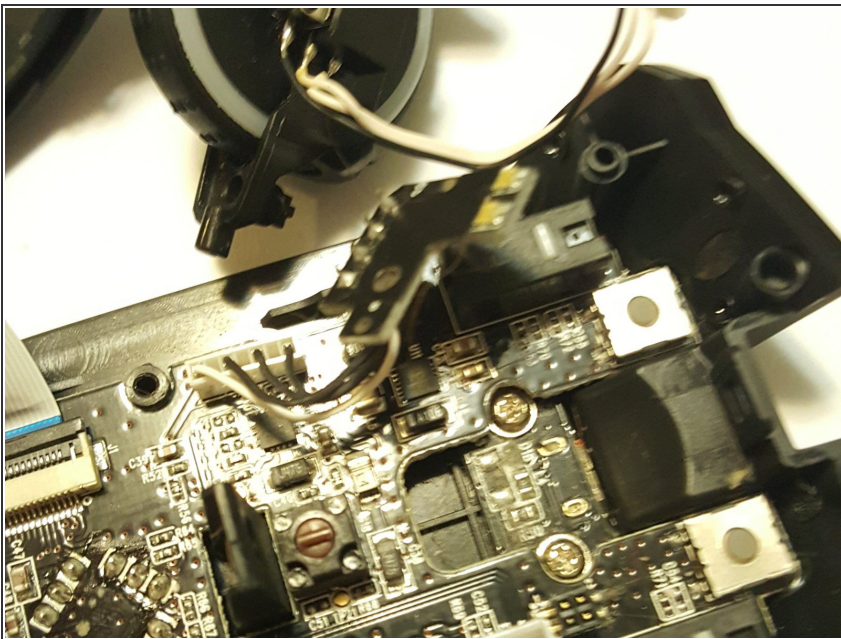
⚠ Be wary of the cable connecting to the twelve mouse buttons located on the left plate. This can be disconnected if needed.

Step 5 — Scroll Wheel



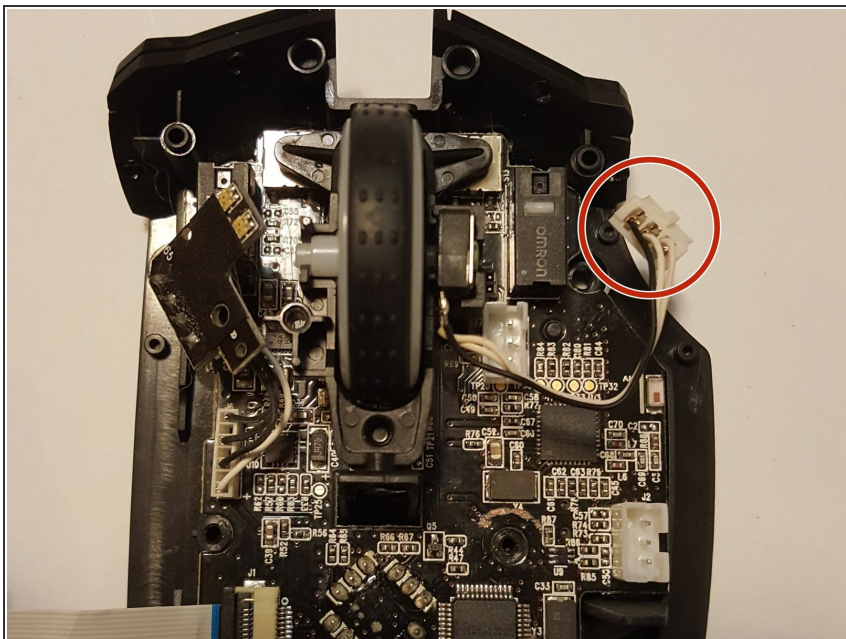
- Using a Phillips #00 screwdriver, remove the single screw adjacent to the wheel.

Step 6



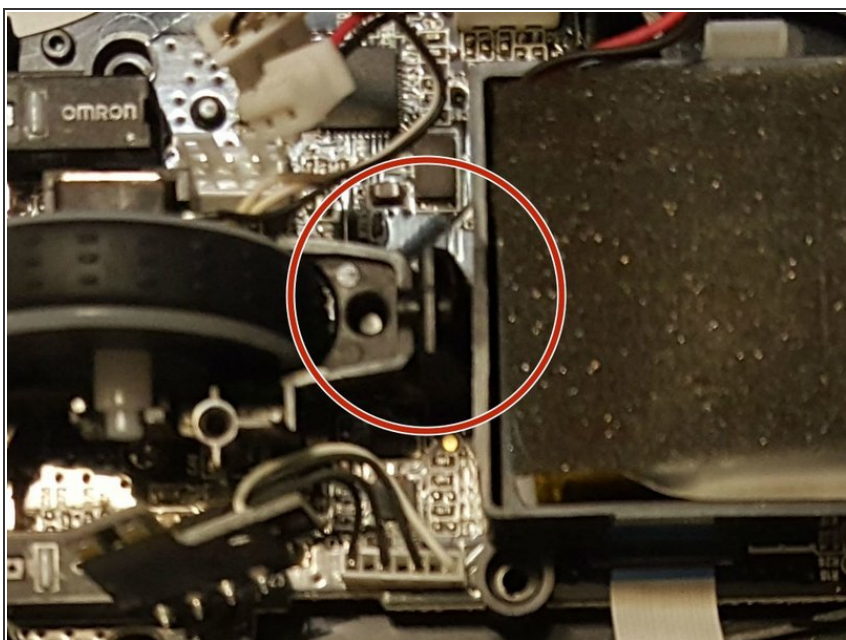
- Use your fingers to pull back on the plastic between the scroll wheel and the battery mount.
- Keep pulling this tab gently towards the battery mount until the scroll wheel has been removed.

Step 7



- Unplug the wheel cable connecting to the board.

Step 8



- Remove the scroll wheel from the mount.

To reassemble your device, follow these instructions in reverse order.