



Razer Naga Epic Chroma Top Casing Replacement

This guide will show how to replace the top plastic casing. This guide was made because the plastic pieces in the case are the most likely to break.

Written By: Jordan Morgan





TOOLS:

- [Phillips #00 Screwdriver](#) (1)
 - [Spudger](#) (1)
-

Step 1 — Razer Naga Epic Chroma Disassembly



- Using a spudger, remove the teflon tape on the bottom of the mouse to reveal four screws.

Step 2



- Use a Phillips #00 screwdriver to remove the four screws.

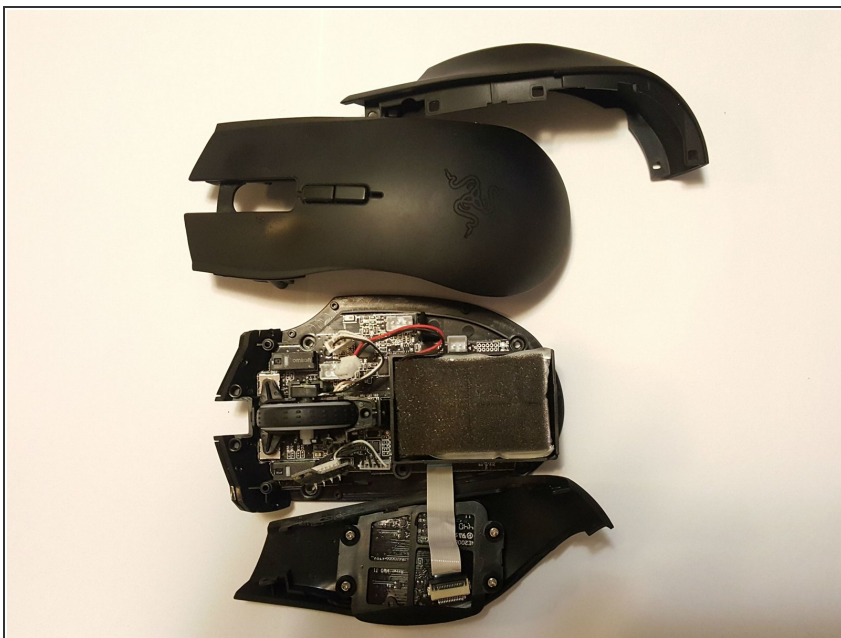
Step 3



- Gently pull on the top plastic plate of the device and carefully unplug the white cord from the circuit board.

⚠ When removing the chassis, carefully unplug the cord connecting to the top mouse buttons.

Step 4



- Gently pull up on the right plate on the mouse; separating it.
- Carefully repeat this step for the left side.

⚠ Be wary of the cable connecting to the twelve mouse buttons located on the left plate. This can be disconnected if needed.

Step 5 — Top Plastic Casing



- Plug the new top casing's cable back into the socket on the right side of the circuit board near the middle.

Step 6



- Reassemble the device.
- Test device to make sure the connections function correctly.

To reassemble your device, follow these instructions in reverse order.