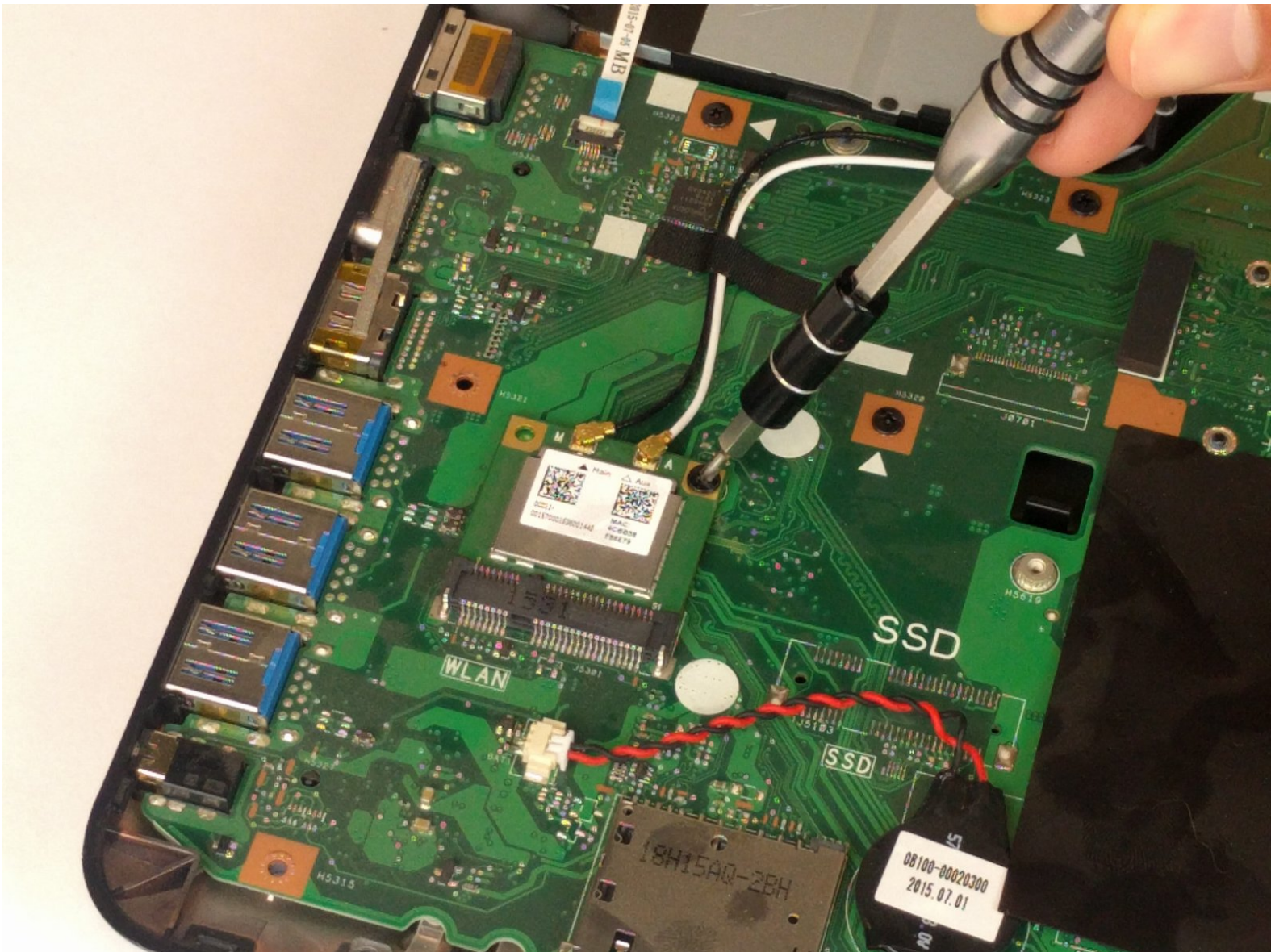




Written By: Matthew Martin



Page 1 of 5

---

## INTRODUCTION

This guide will assist you in replacing a faulty wireless card in your ASUS X751L.

---



### TOOLS:

- [iFixit Opening Tools](#) (1)
  - [Phillips #00 Screwdriver](#) (1)
-

## Step 1 — Keyboard



- With the screen closed, place your laptop upside-down with the front facing you.
- Remove the six 14.6mm Phillips #00 screws.
- Remove the four 6.6mm Phillips #00 screws.

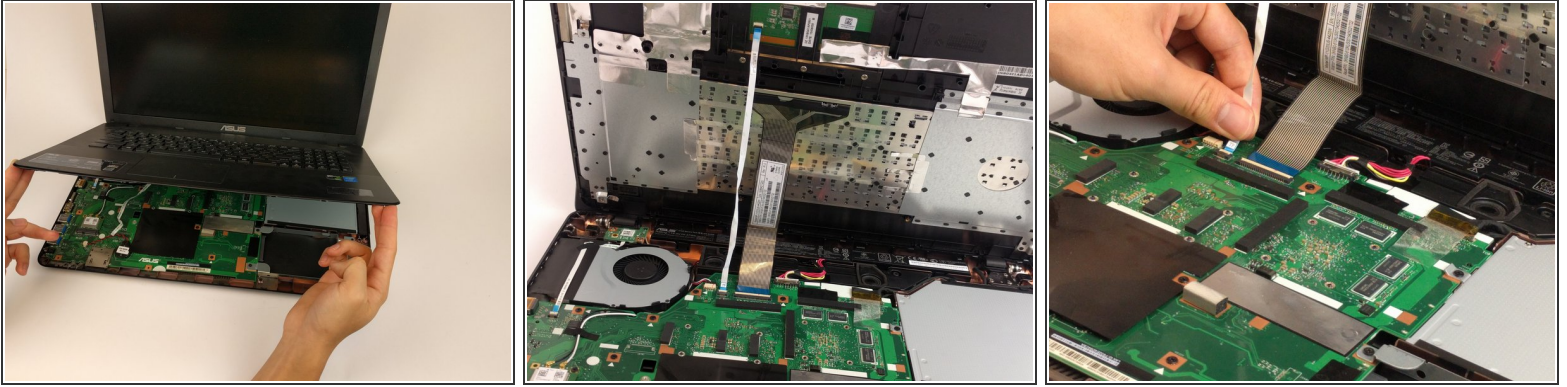
## Step 2



- Flip the laptop over and open the lid.
  - Pry around the edges of the laptop base using the plastic opening tool.
- ⚠ Prying too hard can break the plastic clips.



## Step 3



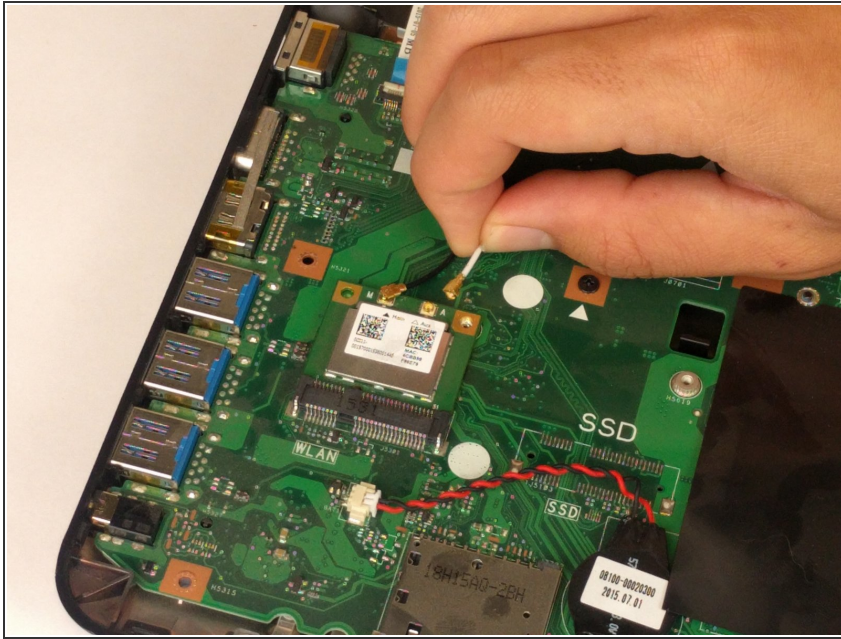
- Carefully lift the keyboard up.
  - ⚠ Be very careful when lifting the keyboard up. Two zero insertion force (ZIF) cables are between the keyboard assembly and the motherboard. Do not lift the assembly too high.
- Disconnect the two ZIF connectors from the motherboard using your fingernail to lift the cream-colored tab.

## Step 4 — Wireless Card



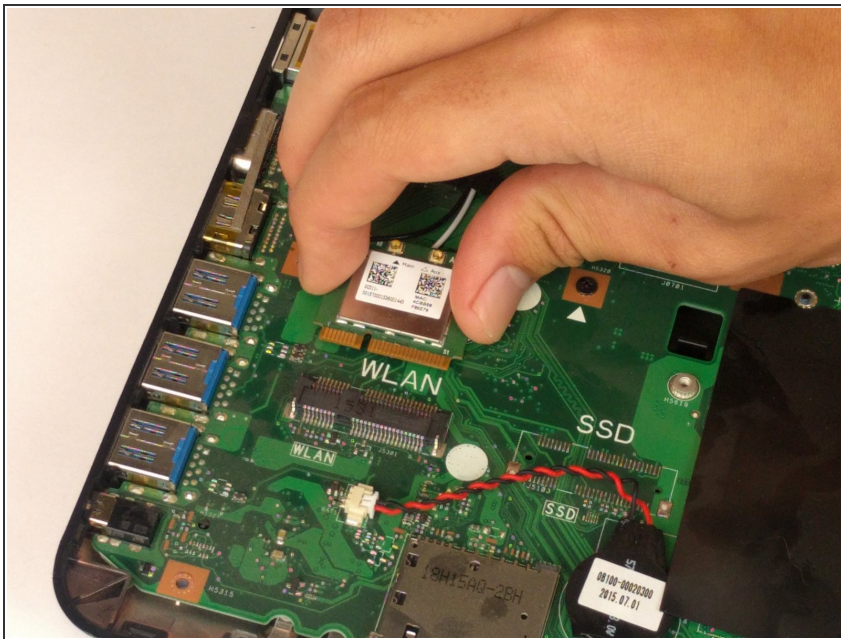
- Remove the single 4.7mm PH00 screw holding the wireless card to the motherboard.

## Step 5



- Using your fingers, lightly lift up on the black and white antenna cords.

## Step 6



- With your fingers lightly pull the wireless card out of the slot.
- ⚠ Make sure to keep the card parallel with the motherboard when removing from the slot.

To reassemble your device, follow these instructions in reverse order.