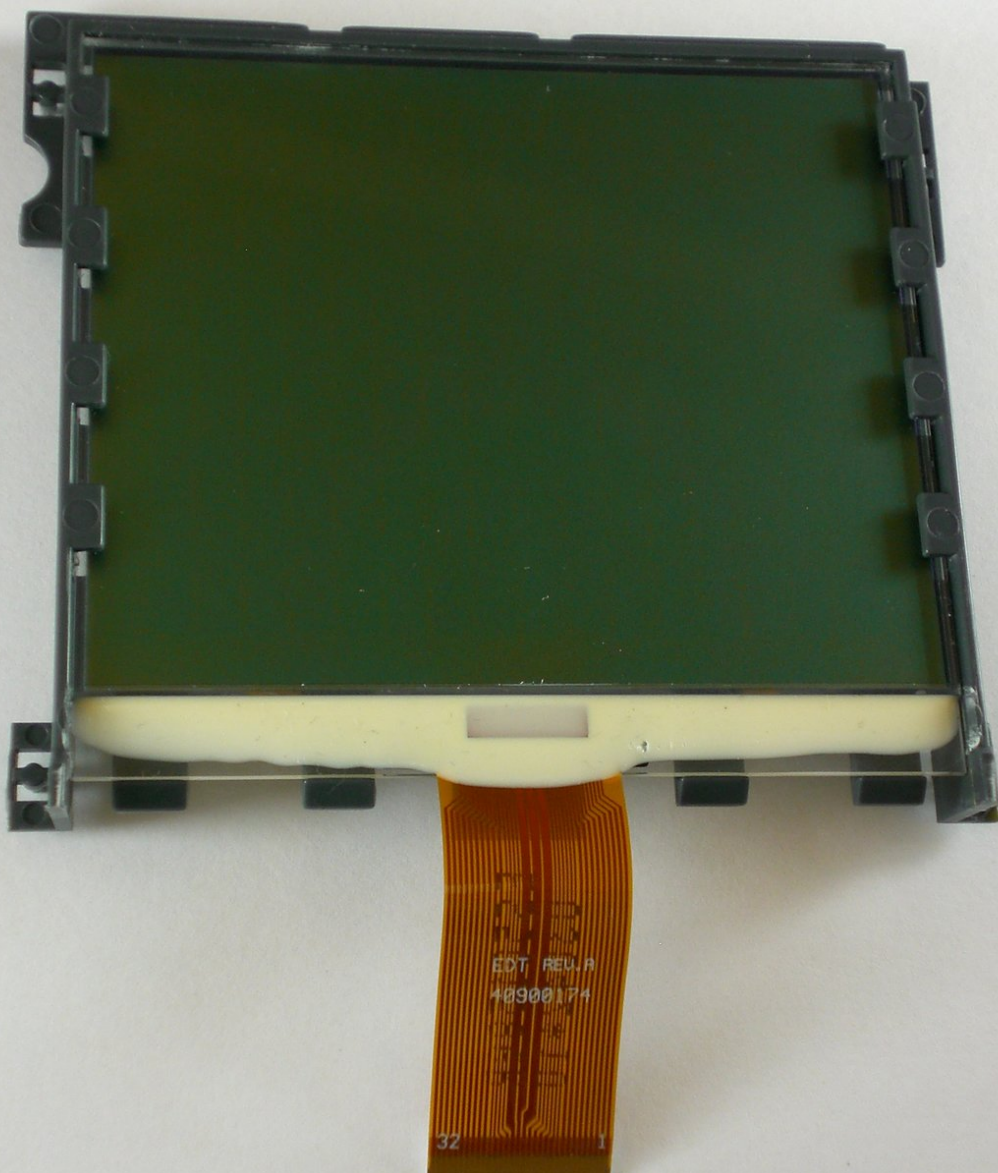




Inter-tel IP 8660 LCD Screen Replacement

Install a new LCD screen for your Inter-tel IP 8660.

Written By: Juan David GutierrezFranco



INTRODUCTION

This guide details the steps to taking off the LCD screen of your Inter-tel IP 8660.



TOOLS:

- [Phillips #1 Screwdriver](#) (1)
 - [Spudger](#) (1)
-

Step 1 — Rear Cover



- Before disassembling the phone, make sure it is not plugged into power and the handset phone cord is disconnected from the handset jack.

Step 2



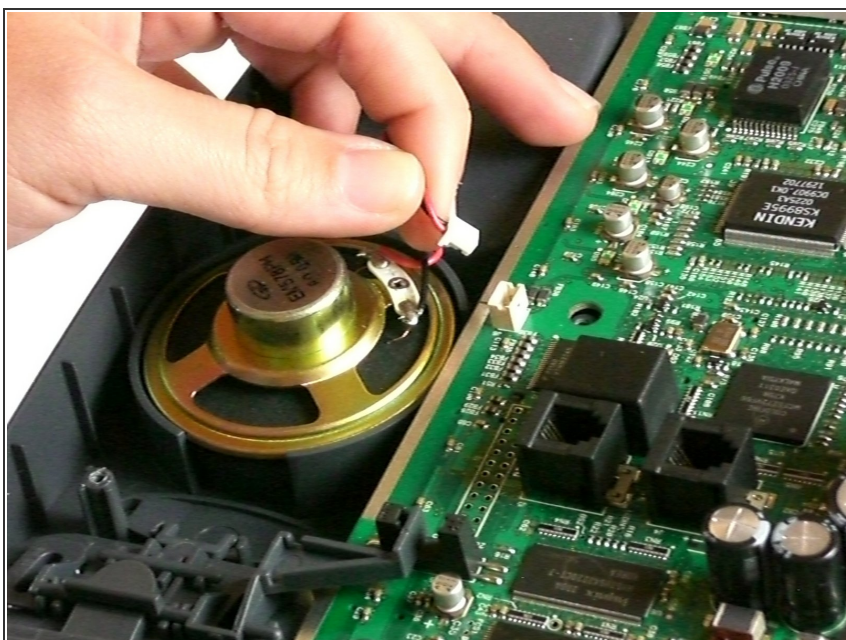
- Unscrew the 9 highlighted screws using a #1 Phillips head screwdriver. You can use a magnetized screwdriver to draw them out.
 - 8 mm long
 - 11 mm long

Step 3



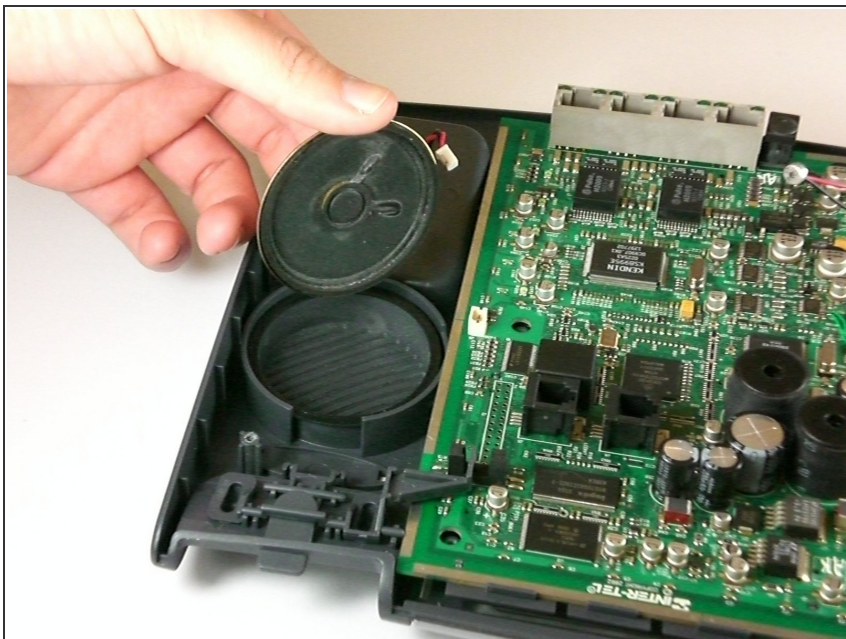
- Lift up the back cover and set it aside.

Step 4 — Internal speaker



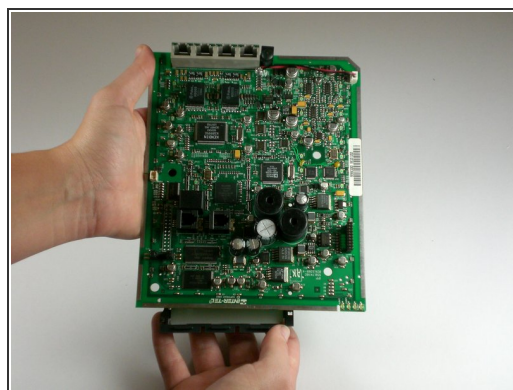
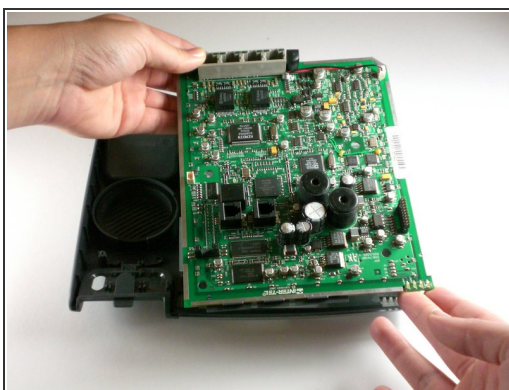
- While holding down the motherboard, gently pull the wire harness connecting the speaker to the motherboard until it comes free.

Step 5



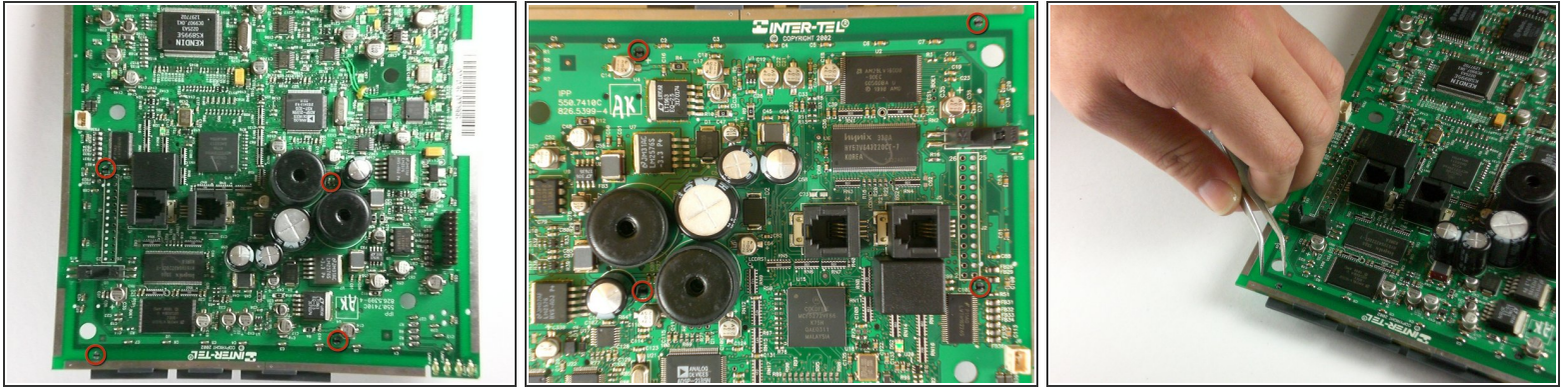
- Lift up the speaker.

Step 6 — LCD Screen



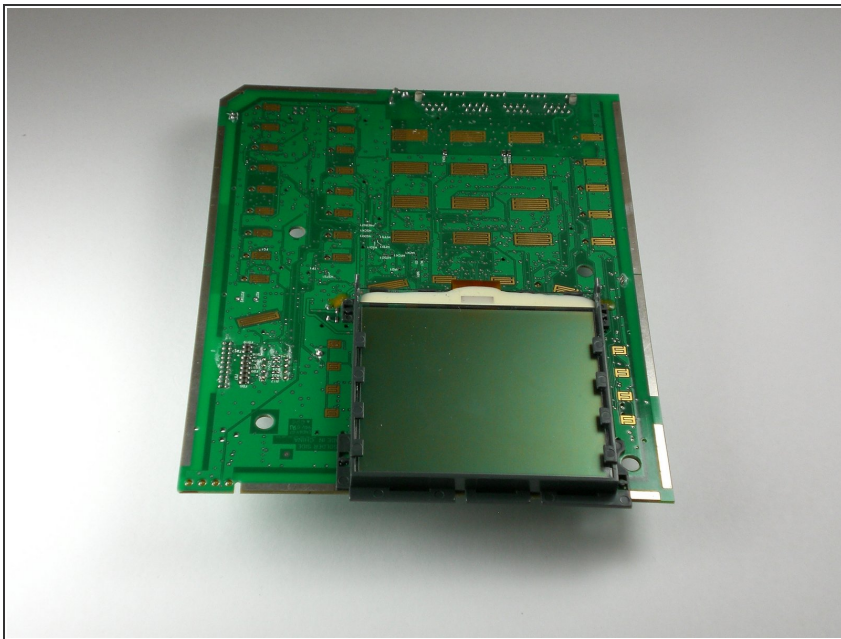
- Lift up the motherboard out of its housing in the front cover of the phone.
- Set the front cover and button pads aside.

Step 7



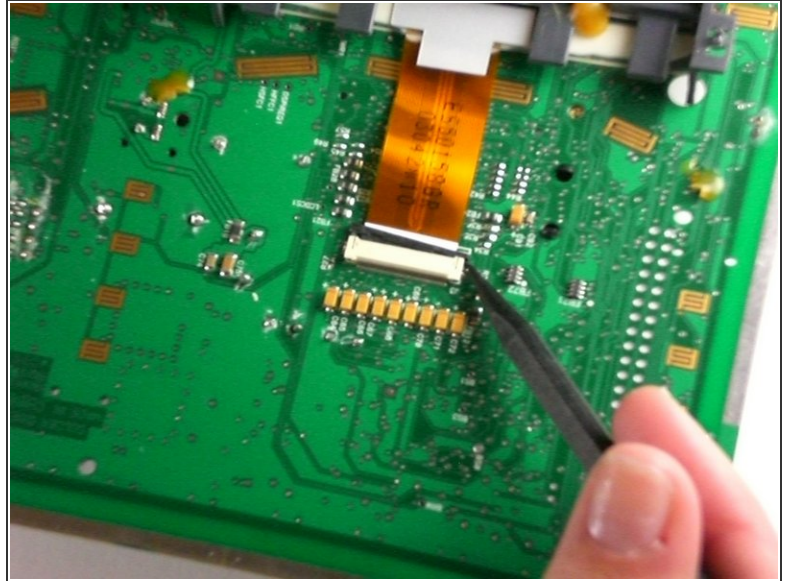
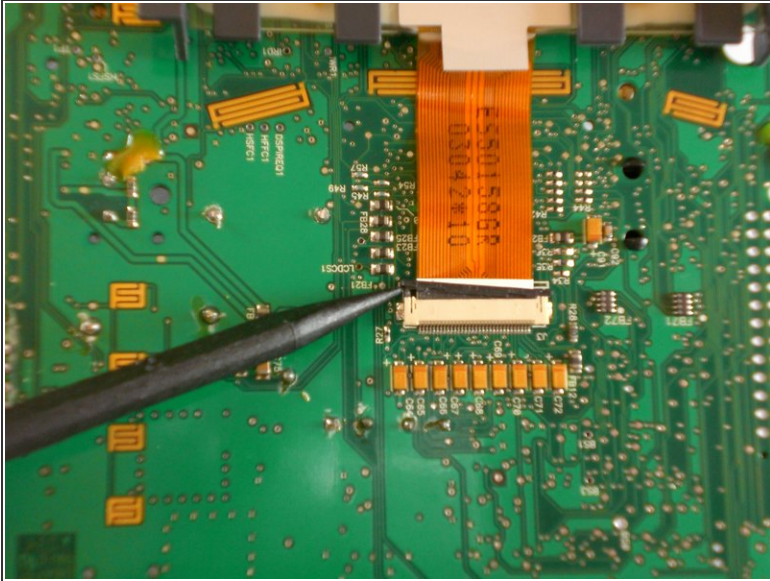
- Using tweezers, pinch the highlighted connective clips together and depress. Start with the clips in the middle of the motherboard first.
- Note: There are four clips, one at each corner of the LCD screen.

Step 8



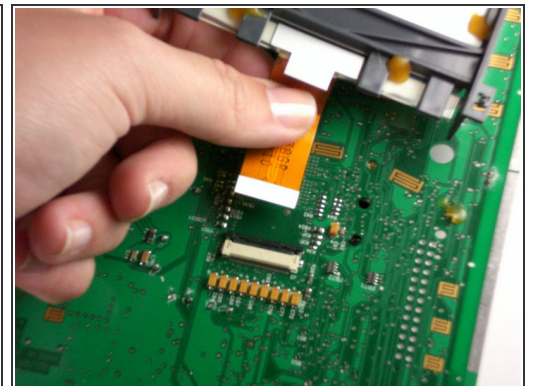
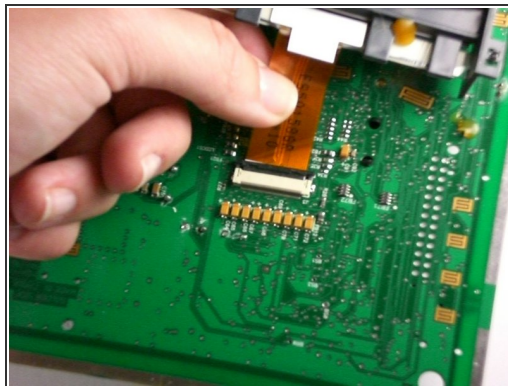
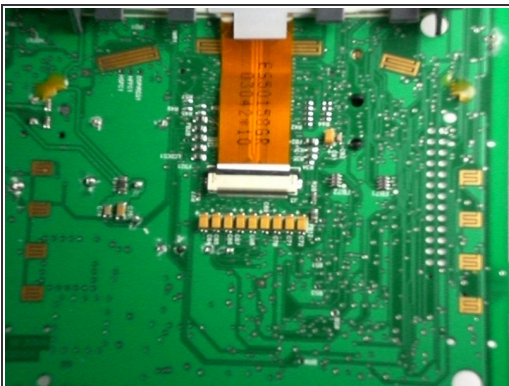
- Flip the motherboard over so that the LCD screen is facing upward.

Step 9



- Push the black clip holding the ribbon cable out of its casing using the plastic opening tool.
- This is done using the spudger to lift one side out of its housing.
- Reposition the spudger to the other side of the black clip and push it flush with the other end.
- Note: The black clip pushes out of the housing and does not come completely loose.

Step 10



- Pull gently on the ribbon cable so that it comes loose from the black clip.

To reassemble your device, follow these instructions in reverse order.

