



# FujiFilm FinePix S4500 Viewfinder Replacement

Follow these steps to remove the viewfinder.

Written By: Vicente Rios



---

# INTRODUCTION

Broken viewfinder? Follow the steps below to get your camera working like new.

---



## TOOLS:

- [iFixit Opening Tools](#) (1)
  - [Phillips #1 Screwdriver](#) (1)
-

## Step 1 — LCD



- Remove the two 3.5 mm Phillips #1 screws in these positions on the left side of the camera with a screwdriver.

## Step 2



- Remove the three 3.5 mm Phillips #1 screws in these locations on the bottom of the camera with a screwdriver.

### Step 3



- Remove the four 3.5 mm Phillips #1 screws in these positions on the right side of the camera with a screwdriver.

### Step 4



- Use a plastic opening tool to separate the back panel from the camera on the left side.



## Step 5



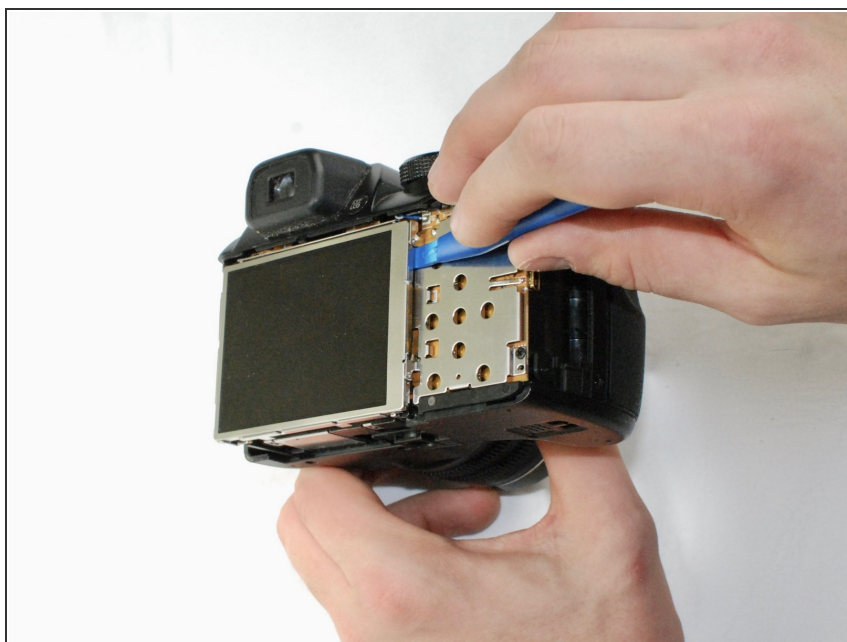
- Use a plastic opening tool to separate the back panel from the camera on the bottom.

## Step 6



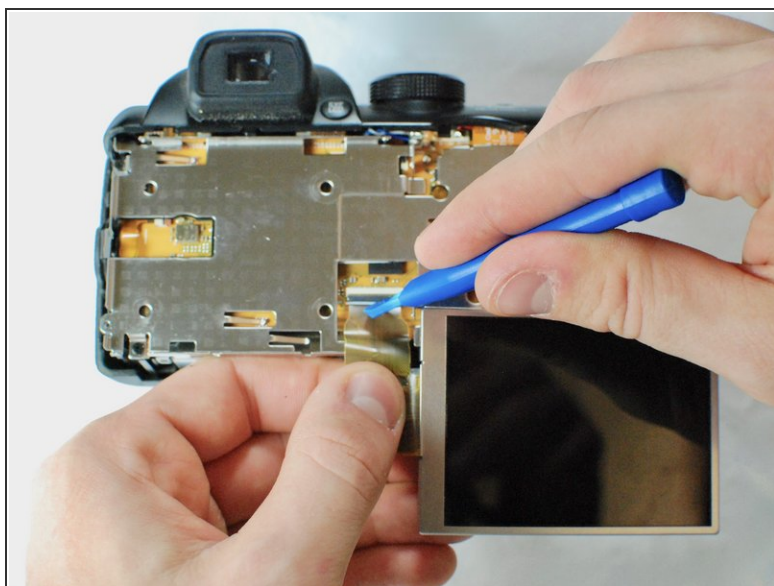
- Use a plastic opening tool to separate the back panel from the camera on the left side, then remove the back panel from the camera.

## Step 7



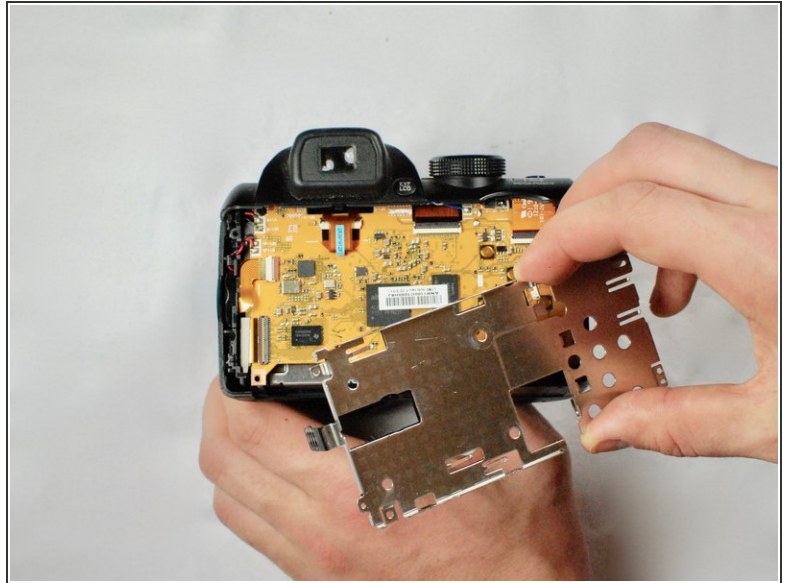
- Use a plastic opening tool to separate the LCD screen from the camera.

## Step 8



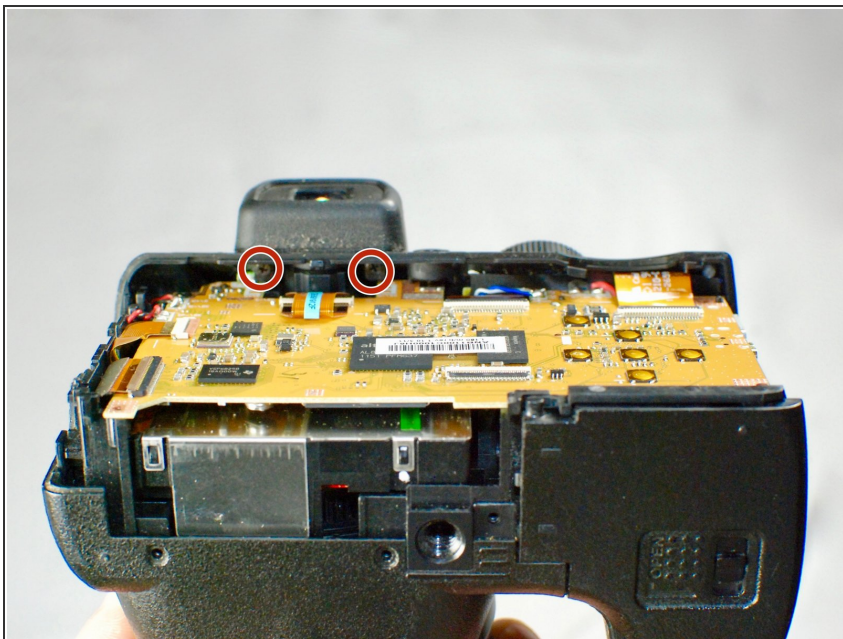
- Flip up the black tab holding the LCD ribbon wire in place and remove wire.

## Step 9 — Viewfinder



- Remove the highlighted 2.7 mm Phillips #1 screws to release the metal cover.

## Step 10



- Turn the camera on its side and remove the highlighted 2.7 mm Phillips #1 screws.



## Step 11



- Lift and remove viewfinder cover

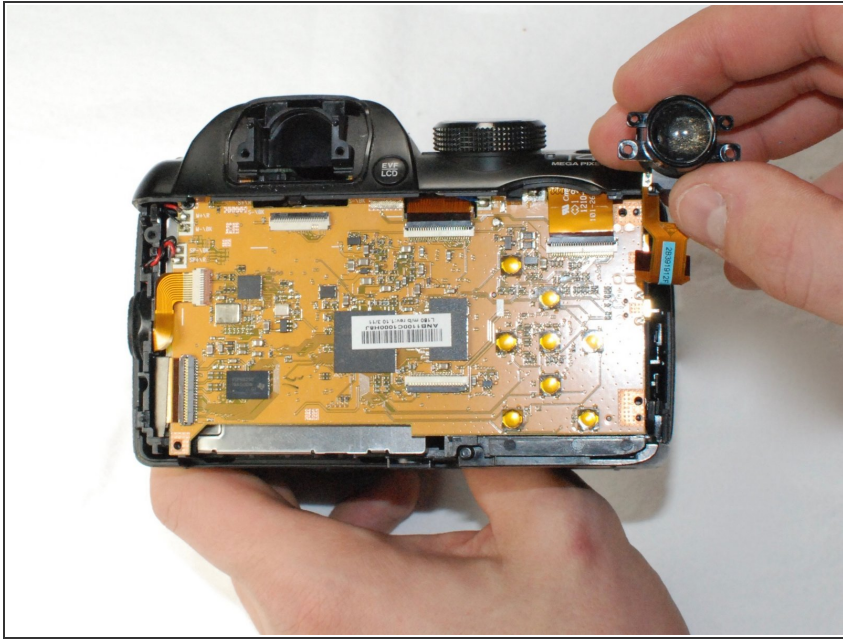
## Step 12



- Use the plastic opening tool to remove the ribbon wire from inside the camera



## Step 13



- Remove the viewfinder assembly from the camera

To reassemble your device, follow these instructions in reverse order.