



Turtle Beach Elite 800 Transmitter Contact Pins Replacement

This guide will instruct someone on how to replace the charging pins that are located inside the transmitter.

Written By: Johnny Lofton





TOOLS:

- [Soldering Iron](#) (1)
- [Desoldering Pump](#) (1)
- [Phillips #00 Screwdriver](#) (1)
- [Phillips #0 Screwdriver](#) (1)

Step 1 — Transmitter Contact Pins



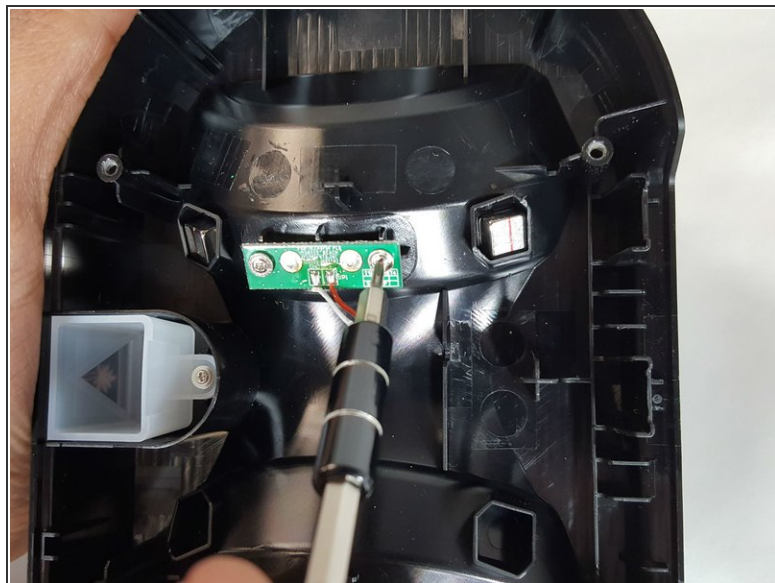
- Begin by flipping over the transmitter, and removing the padding from the underside of it. This will reveal the screws to take apart the device.

Step 2



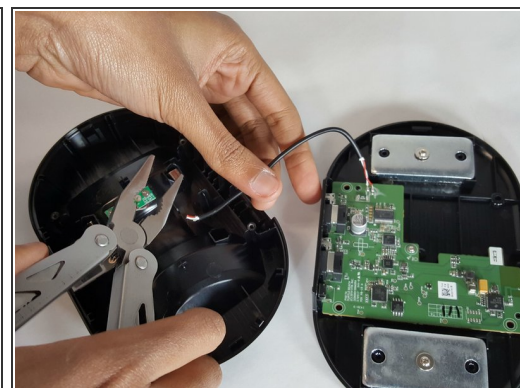
- Remove the screws (11.27mm Phillips head) and open up the transmitter to reveal the internal components. Carefully pry open the transmitter, and use caution when opening it up as to not sever the wire.

Step 3



- Remove the two screws (5.21mm Phillips head) on the board on the top half of the transmitter that is holding the charging pins.

Step 4



- Once the screws are removed, desolder the two wires from the board, and then remove it, and the charging pins with it.
- ⚠ Take extreme caution when dealing with a soldering iron. Refer to the [desoldering guide](#) for tips.
- 📌 Note that for the purposes of this guide we simply clipped the wires connected to the board holding the charging pins.

To reassemble your device, follow these instructions in reverse order.