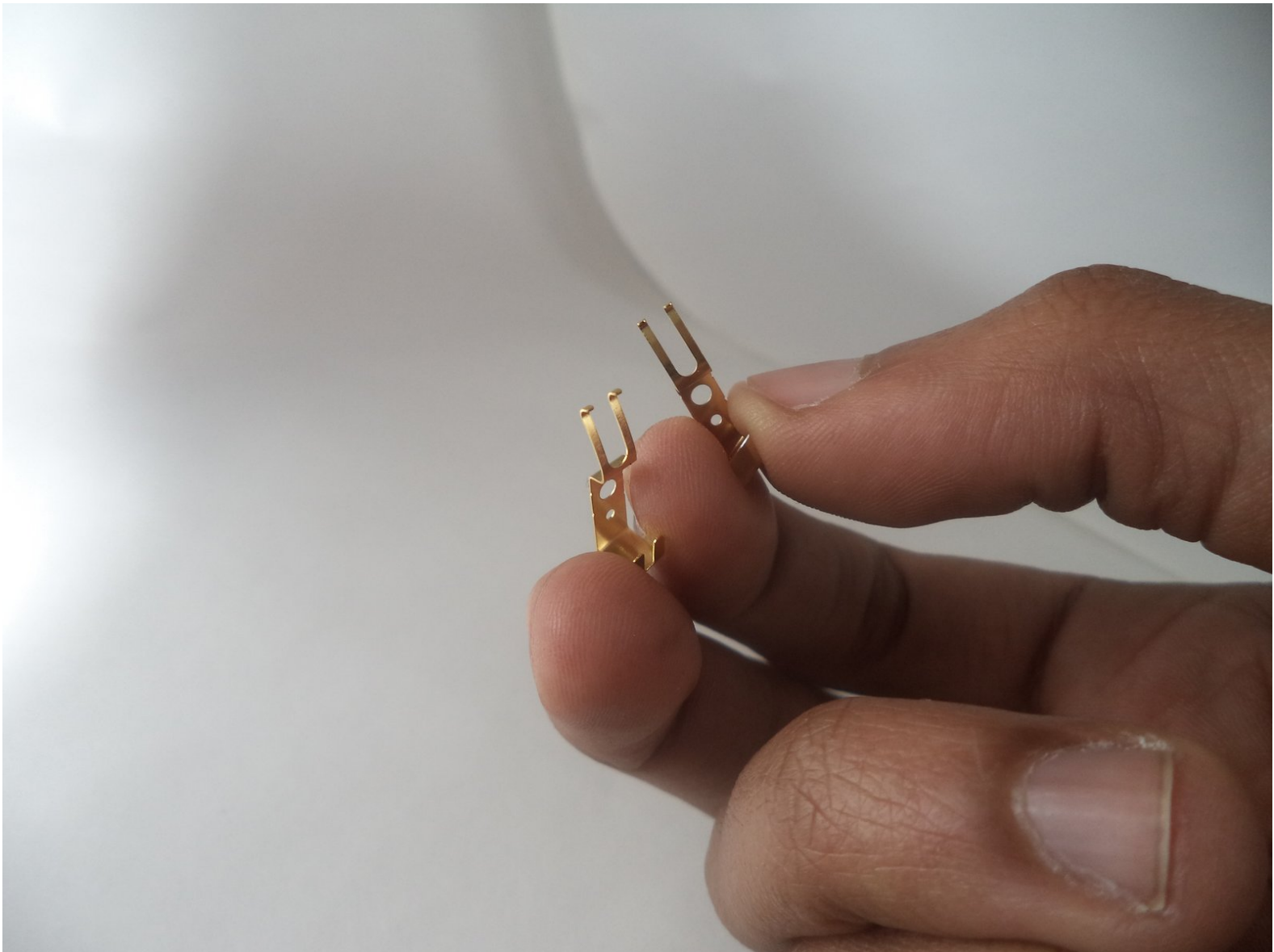




Turtle Beach Elite 800 Charging Pins on Headset Replacement

This is a guide on how to replace the contact...

Written By: Johnny Lofton



INTRODUCTION

This is a guide on how to replace the contact pins inside of the headset.

TOOLS:

- [Phillips #00 Screwdriver](#) (1)
 - [Phillips #0 Screwdriver](#) (1)
-

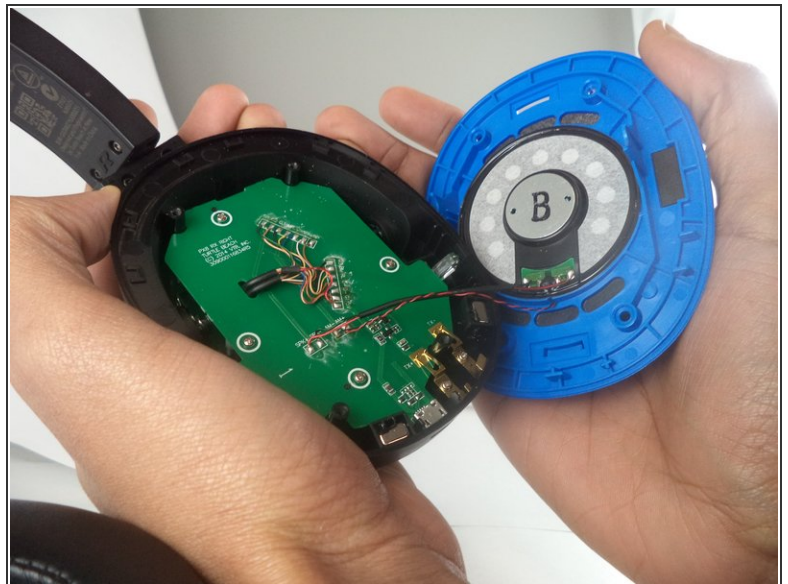
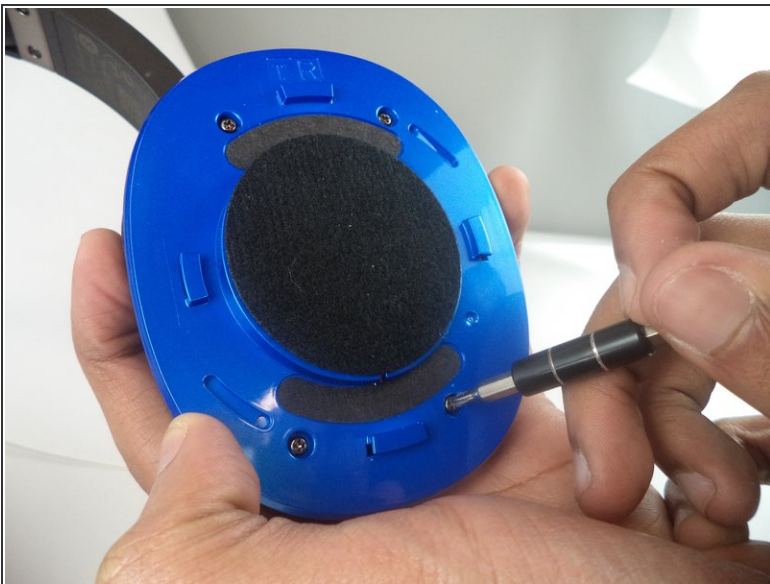
Step 1 — Ear Cushion



- To remove the ear cushions, press firmly down and rotate them clockwise, it should twist about 2mm and release, allowing you to pull it off.

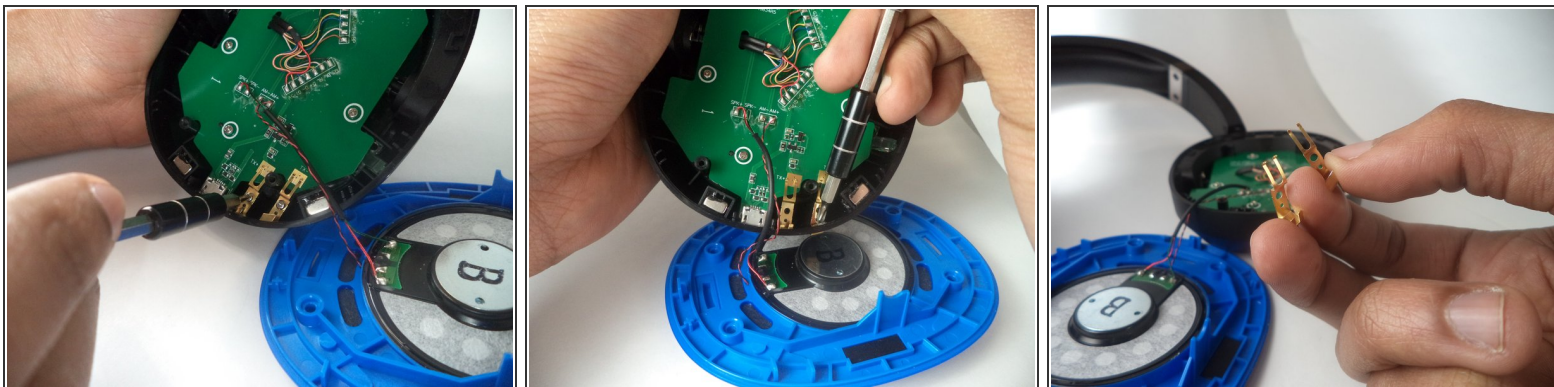
i When reassembling, be sure to line up the locking plates.

Step 2 — Charging Contact Pins on Headset



- Use the Phillips #0 screw bit to remove the four screws (9.47 mm long) that have been revealed from removing the ear cup. Carefully take off the blue casing to reveal the audio board.

Step 3



- Use the Phillips #00 screw bit to remove the two screws (7.92 mm long) that are holding the contact pins in place.
- Then, simply push the pins from the board.

To reassemble your device, follow these instructions in reverse order.